

Snow Land

Composer: Matt Furniss

Game: Wiz'n'Liz

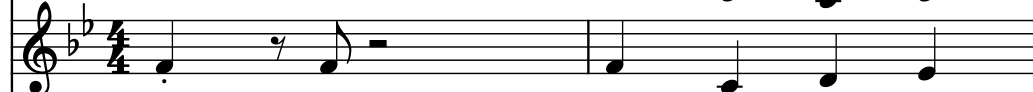
pianogame.org

♩ = 150

Bass Synthesizer, Track 1



Crotales, Track 2



Electric Guitar, Track 3



3

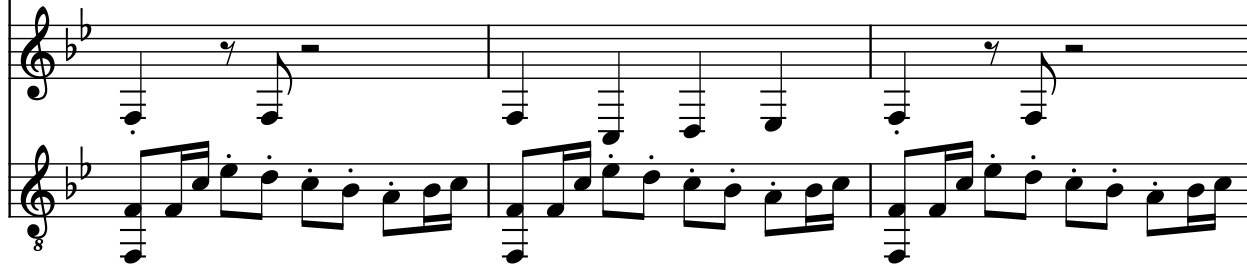
Synth.



Crot.

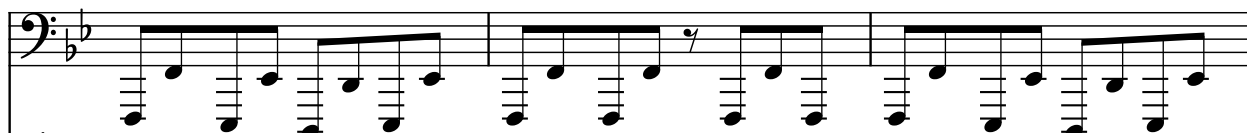


El. Guit.



6

Synth.



Crot.



El. Guit.



9

Synth.

Crot.

El. Guit.

8

12

Synth.

Crot.

El. Guit.

8

14

Synth.

Crot.

El. Guit.

8

17

Synth.

Crot.

El. Guit.

Measures 17-18. Synth. (Bass) plays a continuous eighth-note pattern. Crot. (Crotchet) has rests. El. Guit. (Electric Guitar) plays a rhythmic eighth-note pattern with a low octave line.

19

Synth.

Crot.

El. Guit.

Measures 19-20. Synth. (Bass) plays a continuous eighth-note pattern. Crot. (Crotchet) has rests. El. Guit. (Electric Guitar) plays a rhythmic eighth-note pattern with a low octave line.

21

Synth.

Crot.

El. Guit.

Measures 21-22. Synth. (Bass) plays a continuous eighth-note pattern. Crot. (Crotchet) has rests. El. Guit. (Electric Guitar) plays a rhythmic eighth-note pattern with a low octave line.

23

Synth.

Crot.

El. Guit.

24

25

Synth.

Crot.

El. Guit.

26

27

Synth.

Crot.

El. Guit.

28

29

Synth.

Crot.

El. Guit.

Measures 29-30. Synth. (Bass) plays a descending eighth-note pattern. Crot. (Cymbal) has rests. El. Guit. (Electric Guitar) plays a complex eighth-note pattern with a low octave pedal point.

31

Synth.

Crot.

El. Guit.

Measures 31-32. Synth. (Bass) continues the descending eighth-note pattern. Crot. (Cymbal) has rests. El. Guit. (Electric Guitar) continues the eighth-note pattern with a low octave pedal point.

34

Synth.

Crot.

El. Guit.

Measures 34-35. Synth. (Bass) plays a descending eighth-note pattern. Crot. (Cymbal) has rests. El. Guit. (Electric Guitar) plays a descending eighth-note pattern.

37

Synth.

Crot.

El. Guit.

8

39

Synth.

Crot.

El. Guit.

8

42

Synth.

Crot.

El. Guit.

8

45

Synth.

Crot.

El. Guit.

8

48

Synth.

Crot.

El. Guit.

8

51

Synth.

Crot.

El. Guit.

8

54

Synth.

Crot.

El. Guit.

Measures 54-56. Synth. (Bass) plays a descending eighth-note line. Crot. (Snare) plays a steady eighth-note pattern. El. Guit. (Electric Guitar) plays a complex eighth-note pattern with many accidentals.

57

Synth.

Crot.

El. Guit.

Measures 57-58. Synth. (Bass) plays a steady eighth-note line. Crot. (Snare) is silent. El. Guit. (Electric Guitar) plays a complex eighth-note pattern with many accidentals.

59

Synth.

Crot.

El. Guit.

Measures 59-60. Synth. (Bass) plays a steady eighth-note line. Crot. (Snare) is silent. El. Guit. (Electric Guitar) plays a complex eighth-note pattern with many accidentals.

61

Synth.

Crot.

El. Guit.

Measures 61-62. Synth. (Bass) plays a descending eighth-note line. Crot. (Cymbal) has rests. El. Guit. (Electric Guitar) plays a complex eighth-note pattern with ties and slurs.

63

Synth.

Crot.

El. Guit.

Measures 63-64. Synth. (Bass) continues the descending eighth-note line. Crot. (Cymbal) has rests. El. Guit. (Electric Guitar) continues the eighth-note pattern with a long slur across measures 63 and 64.

65

Synth.

Crot.

El. Guit.

Measures 65-66. Synth. (Bass) continues the descending eighth-note line. Crot. (Cymbal) has rests. El. Guit. (Electric Guitar) continues the eighth-note pattern.

67

Synth.

Crot.

El. Guit.

This system contains measures 67 and 68. The Synth. part (bass clef) plays a continuous eighth-note line. The Crot. part (treble clef) has rests in both measures. The El. Guit. part (treble clef) features a complex rhythmic pattern with eighth and sixteenth notes, including a triplet in measure 68. The key signature has two flats.

69

Synth.

Crot.

El. Guit.

This system contains measures 69 and 70. The Synth. part continues its eighth-note line. The Crot. part has rests in both measures. The El. Guit. part continues its rhythmic pattern, with a triplet in measure 70. The key signature has two flats.

71

Synth.

Crot.

El. Guit.

This system contains measures 71 and 72. The Synth. part continues its eighth-note line. The Crot. part has rests in both measures. The El. Guit. part continues its rhythmic pattern, with a triplet in measure 72. The key signature has two flats.

74

Synth.

Crot.

El. Guit.

77

Synth.

Crot.

El. Guit.

79

Synth.

Crot.

El. Guit.