

Music A (Hard Rock Remix)

Composer: Hirokazu Tanaka

Game: Tetris

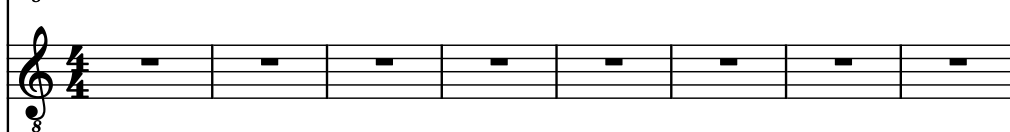
pianogame.org

♩ = 200

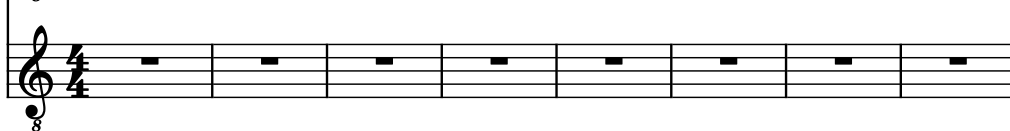
Electric Guitar, MIDI Ch. 1



Electric Guitar, MIDI Ch. 2



Electric Guitar, MIDI Ch. 3



9

El. Guit.

El. Guit.

El. Guit.

Musical staff for Electric Guitar, MIDI Ch. 3, measures 9-11. The staff contains a continuous eighth-note bass line.

12

El. Guit.

El. Guit.

El. Guit.

Musical staff for Electric Guitar, MIDI Ch. 3, measures 12-14. The staff contains a continuous eighth-note bass line.

15

El. Guit.

El. Guit.

El. Guit.

Musical staff for Electric Guitar, MIDI Ch. 3, measures 15-17. The staff contains a continuous eighth-note bass line.

19

El. Guit.

Three staves of musical notation for measures 19-21. The top staff (labeled 'El. Guit.') has a treble clef and a key signature of one flat. It contains a dotted quarter note, an eighth note, a quarter note, and a half note. The middle staff (labeled 'El. Guit.') has a treble clef and a key signature of one flat. It contains a dotted quarter note, an eighth note, a quarter note, and a half note. The bottom staff (labeled 'El. Guit.') has a treble clef and a key signature of one flat. It contains a dotted quarter note, an eighth note, a quarter note, and a half note. A circled '8' is present in the bottom staff.

22

El. Guit.

Three staves of musical notation for measures 22-24. The top staff (labeled 'El. Guit.') has a treble clef and a key signature of one flat. It contains a dotted quarter note, an eighth note, a quarter note, and a half note. The middle staff (labeled 'El. Guit.') has a treble clef and a key signature of one flat. It contains a dotted quarter note, an eighth note, a quarter note, and a half note. The bottom staff (labeled 'El. Guit.') has a treble clef and a key signature of one flat. It contains a dotted quarter note, an eighth note, a quarter note, and a half note. A circled '8' is present in the bottom staff.

25

El. Guit.

Three staves of musical notation for measures 25-28. The top staff (labeled 'El. Guit.') has a treble clef and a key signature of one flat. It contains a dotted quarter note, an eighth note, a quarter note, and a half note. The middle staff (labeled 'El. Guit.') has a treble clef and a key signature of one flat. It contains a dotted quarter note, an eighth note, a quarter note, and a half note. The bottom staff (labeled 'El. Guit.') has a treble clef and a key signature of one flat. It contains a dotted quarter note, an eighth note, a quarter note, and a half note. A circled '8' is present in the bottom staff.

29

El. Guit.

Three staves of musical notation for measures 29-32. The top staff (labeled 'El. Guit.') has a treble clef and a key signature of one flat. It contains a dotted quarter note, an eighth note, a quarter note, and a half note. The middle staff (labeled 'El. Guit.') has a treble clef and a key signature of one flat. It contains a dotted quarter note, an eighth note, a quarter note, and a half note. The bottom staff (labeled 'El. Guit.') has a treble clef and a key signature of one flat. It contains a dotted quarter note, an eighth note, a quarter note, and a half note. A circled '8' is present in the bottom staff.

33

El. Guit.

Three staves of musical notation for measures 33-35. The top staff (labeled 'El. Guit.') contains a melodic line with notes and accidentals. The middle staff contains a similar melodic line. The bottom staff contains a bass line with chords and eighth notes. A small '8' is written below the first measure of the bottom staff.

36

El. Guit.

Three staves of musical notation for measures 36-38. The top staff has a melodic line with a rest in measure 37. The middle staff has a melodic line with a rest in measure 37. The bottom staff has a bass line with chords and eighth notes. A small '8' is written below the first measure of the bottom staff.

39

El. Guit.

Three staves of musical notation for measures 39-42. The top staff has a melodic line with a rest in measure 40. The middle staff has a melodic line with a rest in measure 40. The bottom staff has a bass line with chords and eighth notes. A small '8' is written below the first measure of the bottom staff.

43

El. Guit.

Three staves of musical notation for measures 43-45. The top staff has a melodic line with a rest in measure 44. The middle staff has a melodic line with a rest in measure 44. The bottom staff has a bass line with chords and eighth notes. A small '8' is written below the first measure of the bottom staff.

46

El. Guit.

The image shows three staves of electric guitar notation, each labeled 'El. Guit.' on the left. The first staff begins with a measure number '46' above the first measure. Each staff has a treble clef and a key signature of one flat (B-flat). The first staff contains a melodic line with eighth and quarter notes, including accidentals (sharps and flats). The second staff contains a similar melodic line with eighth and quarter notes. The third staff contains a bass line with eighth and quarter notes, including accidentals. All three staves end with a double bar line.