

# Raphael The Raven

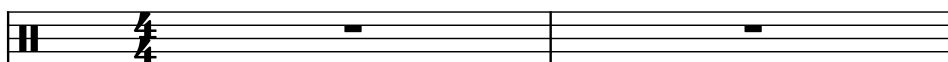
Composer: Yuka Tsujiyoko

Game: Paper Mario

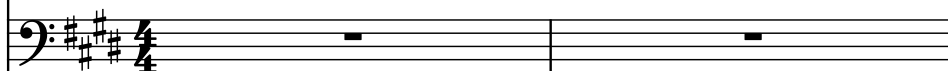
[pianogame.org](http://pianogame.org)

♩ = 104

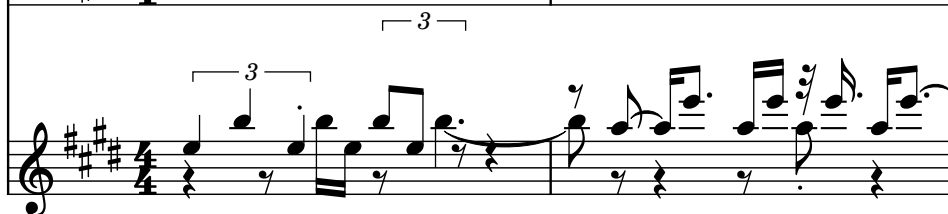
Marching Tenor Drums, Track 1



Bass Synthesizer, Track 2

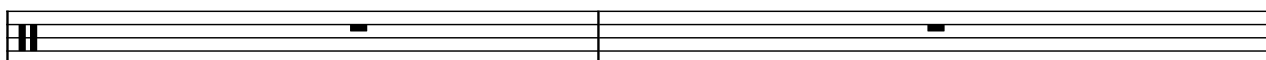


Pan Flute, Track 3

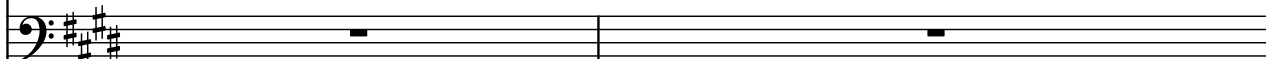


3

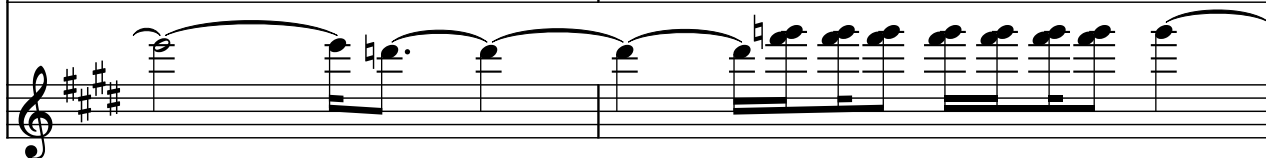
T.D.



Synth.



Pn. Fl.

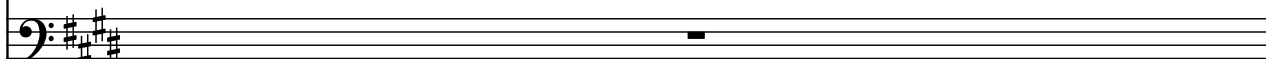


5

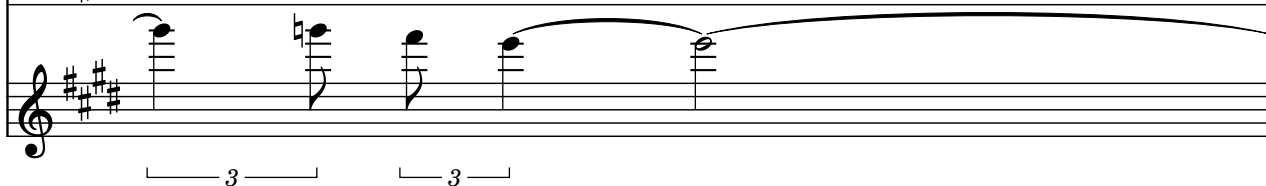
T.D.



Synth.



Pn. Fl.



3

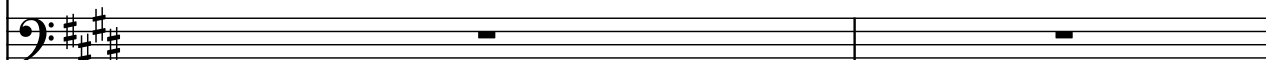
3

6

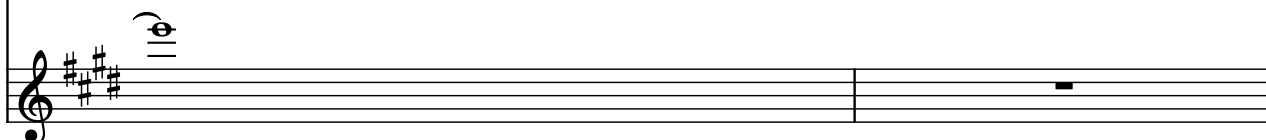
T.D.



Synth.




Pn. Fl.

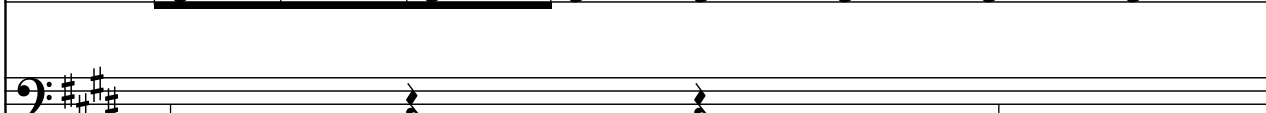


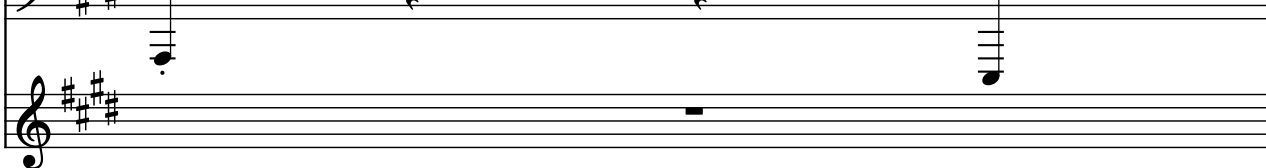
8

T.D.

13

T.D. 

Synth. 

Pn. Fl. 


14

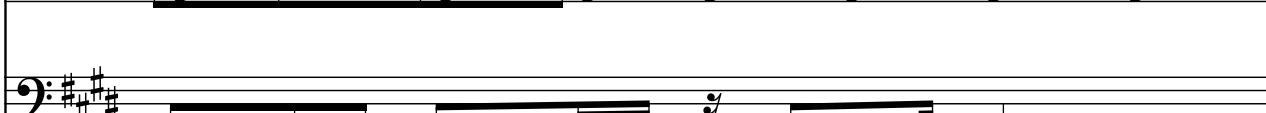
T.D. 


Synth. 

Pn. Fl. 

15

T.D. 

Synth. 

Pn. Fl. 


16

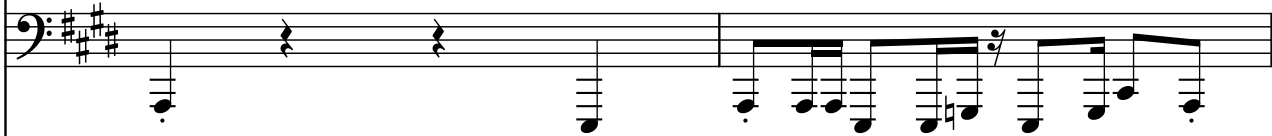
T.D. 

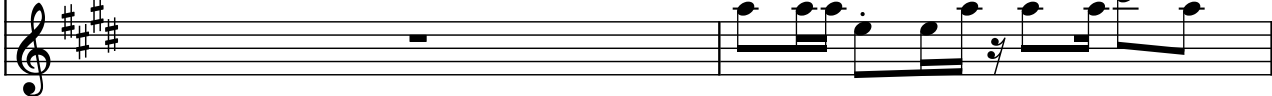
Synth. 

Pn. Fl. 

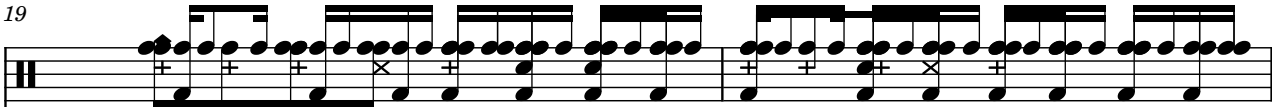
17


T.D. 


Synth. 

Pn. Fl. 


19

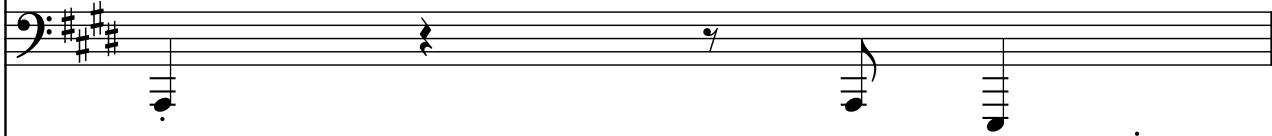
T.D. 


Synth. 

Pn. Fl. 


21


T.D. 


Synth. 

Pn. Fl. 

22

T.D. 

Synth. 

Pn. Fl. 

23

T.D.

Synth.

Pn. Fl.

24

T.D.

Synth.

Pn. Fl.

25

T.D.

Synth.

Pn. Fl.


26

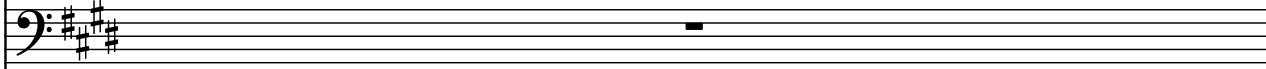
T.D.

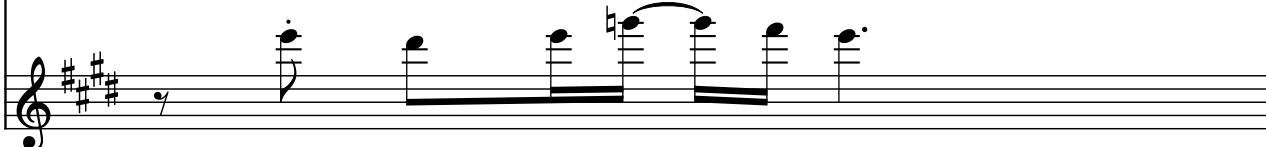
Synth.

Pn. Fl.


27

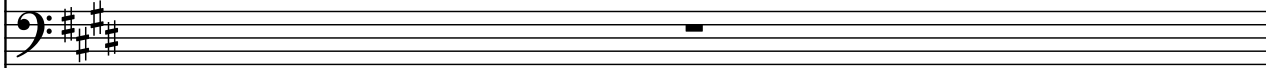
T.D. 


Synth. 

Pn. Fl. 


28

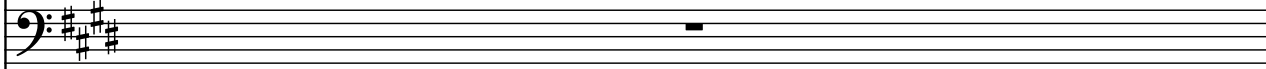
T.D. 


Synth. 

Pn. Fl. 


29

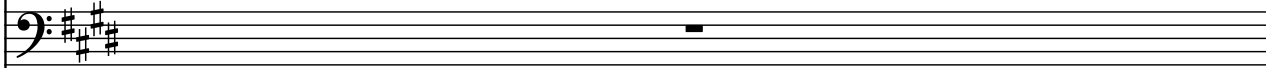
T.D. 

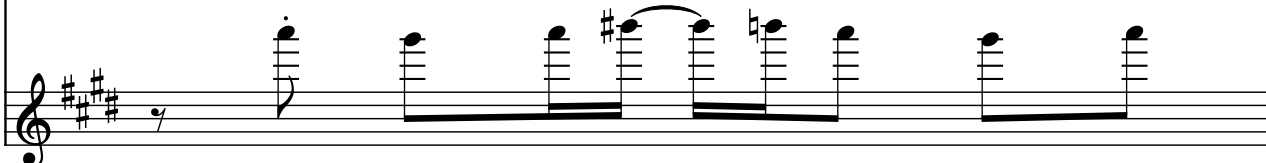
Synth. 

Pn. Fl. 

30

T.D. 

Synth. 

Pn. Fl. 

31

T.D.

Synth.

Pn. Fl.

32

T.D.

Synth.

Pn. Fl.

33

T.D.

Synth.

Pn. Fl.

34

T.D.

Synth.

Pn. Fl.

35

T.D.

Synth.

Pn. Fl.



36

T.D. 

Synth. 

Pn. Fl. 

37

T.D. 

Synth. 

Pn. Fl. 

38

T.D. 

Synth. 

Pn. Fl. 

39

T.D. 

Synth. 

Pn. Fl. 


40

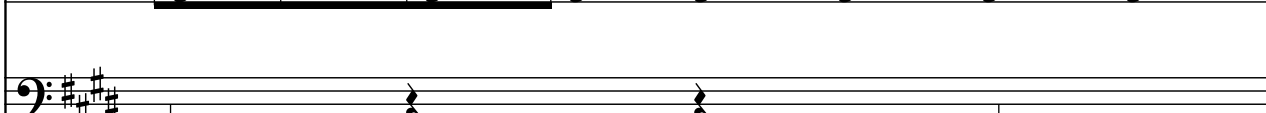
T.D. 

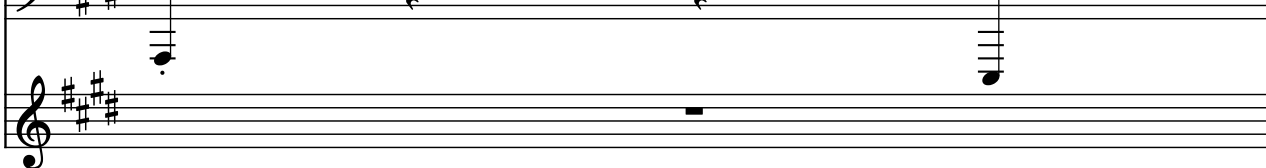
Synth. 

Pn. Fl. 

41

T.D. 

Synth. 

Pn. Fl. 


42

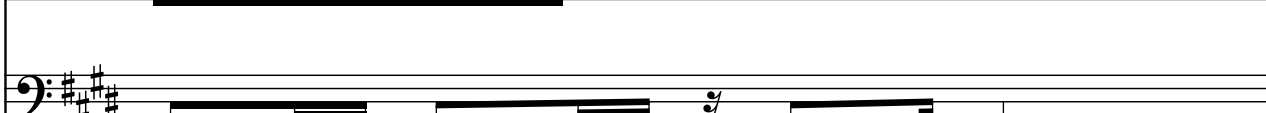
T.D. 


Synth. 

Pn. Fl. 


43

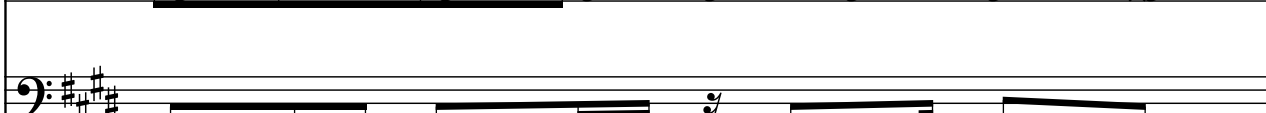
T.D. 


Synth. 

Pn. Fl. 


44

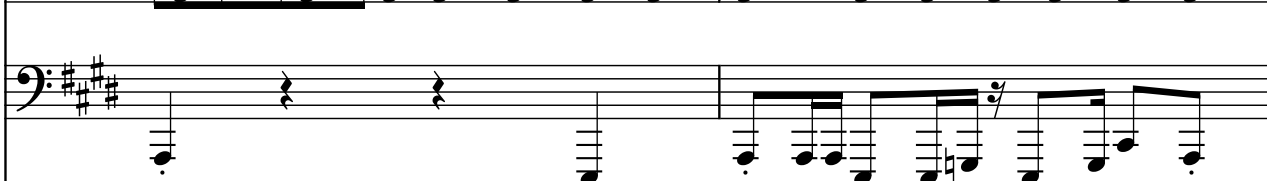
T.D. 

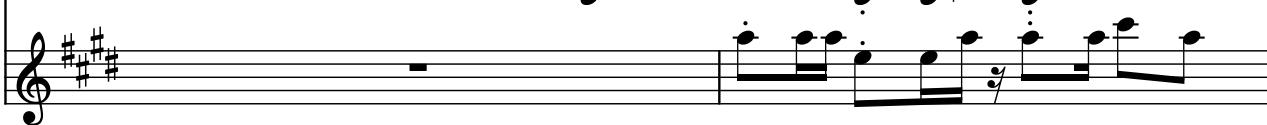
Synth. 

Pn. Fl. 


45


T.D. 


Synth. 

Pn. Fl. 


47

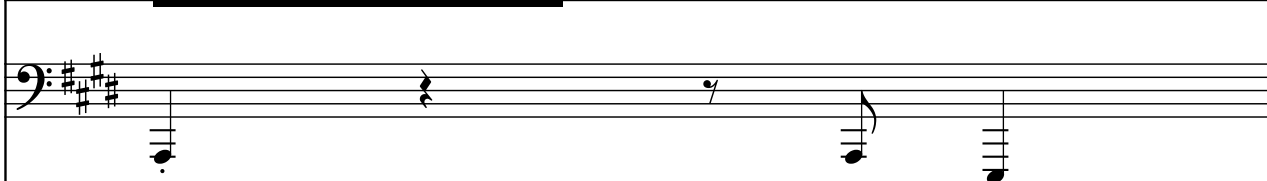
T.D. 

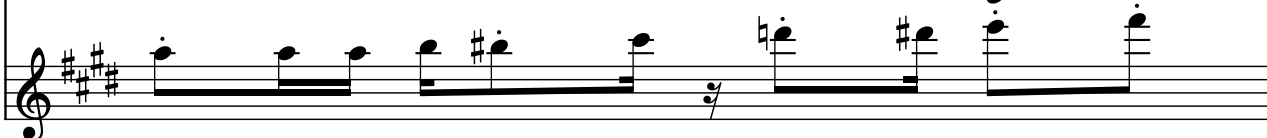
Synth. 

Pn. Fl. 


49


T.D. 


Synth. 

Pn. Fl. 


50


T.D. 


Synth. 

Pn. Fl. 

51

T.D. 

Synth. 

Pn. Fl. 


52

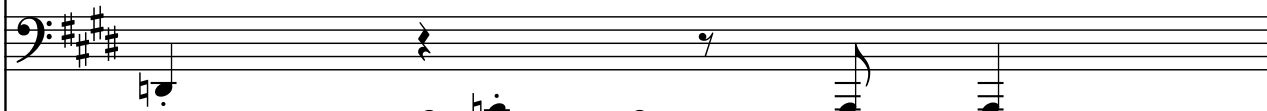
T.D. 


Synth. 

Pn. Fl. 


53


T.D. 


Synth. 

Pn. Fl. 

54

T.D. 

Synth. 

Pn. Fl. 

55

T.D.

Synth.

Pn. Fl.

56

T.D.

Synth.

Pn. Fl.

57

T.D.

Synth.

Pn. Fl.


58

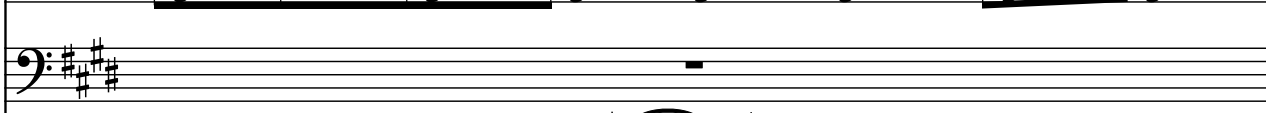
T.D.


Synth.

Pn. Fl.


59

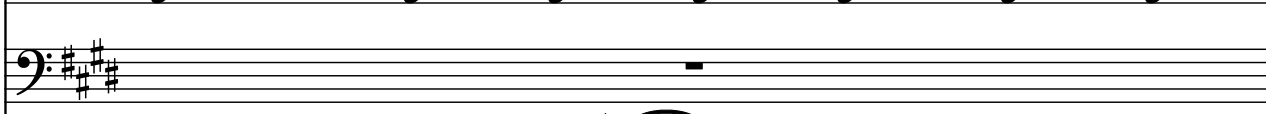
T.D. 


Synth. 

Pn. Fl. 


60

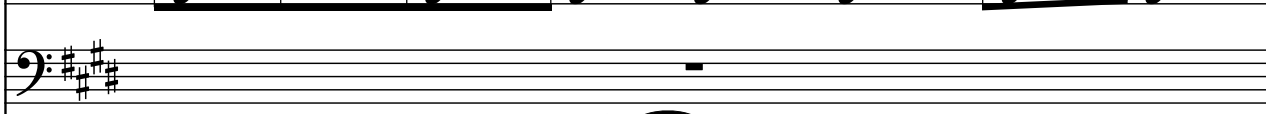
T.D. 


Synth. 

Pn. Fl. 


61

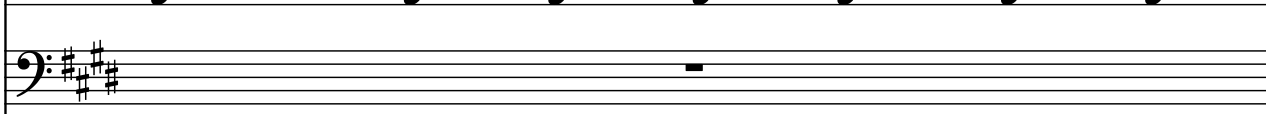
T.D. 

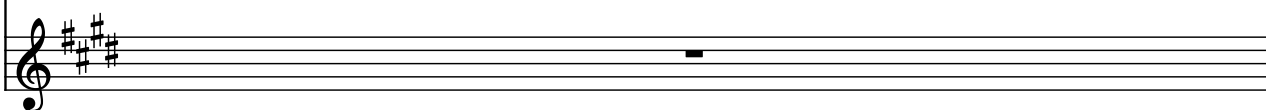
Synth. 

Pn. Fl. 


62

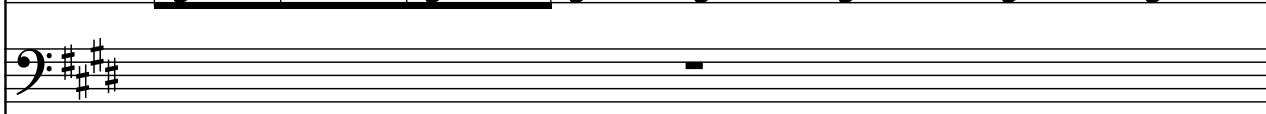
T.D. 

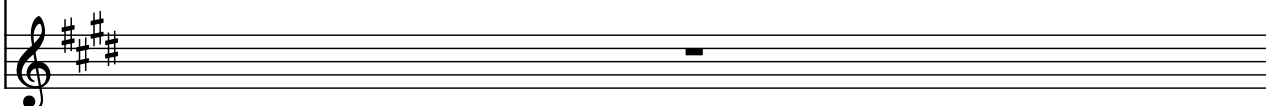
Synth. 

Pn. Fl. 

63

T.D. 

Synth. 

Pn. Fl. 

64

T.D. 

Synth. 

Pn. Fl. 

65

T.D. 

Synth. 

Pn. Fl. 

66

T.D. 

Synth. 

Pn. Fl. 

67

T.D. 

Synth. 

Pn. Fl. 

68

T.D. 

Synth. 

Pn. Fl. 

69

T.D.

Synth.

Pn. Fl.

Measure 69: T.D. plays a complex melodic line with many beamed notes. Synth. has a bass line with dotted notes. Pn. Fl. has a whole rest.

Measure 70: T.D. continues the complex melodic line. Synth. continues the bass line. Pn. Fl. has a whole rest.

70

T.D.

Synth.

Pn. Fl.

Measure 70: T.D. continues the complex melodic line. Synth. continues the bass line. Pn. Fl. has a whole rest.

Measure 71: T.D. continues the complex melodic line. Synth. continues the bass line. Pn. Fl. has a whole rest.

71

T.D.

Synth.

Pn. Fl.

Measure 71: T.D. continues the complex melodic line. Synth. continues the bass line. Pn. Fl. has a whole rest.

Measure 72: T.D. continues the complex melodic line. Synth. continues the bass line. Pn. Fl. has a whole rest.