

Stage 3

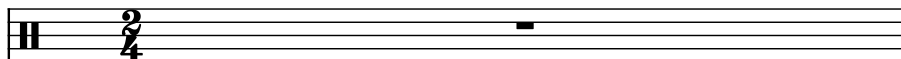
Composer: Konami Kukeiha Club

Game: Gokujyo Parodius (Japan)

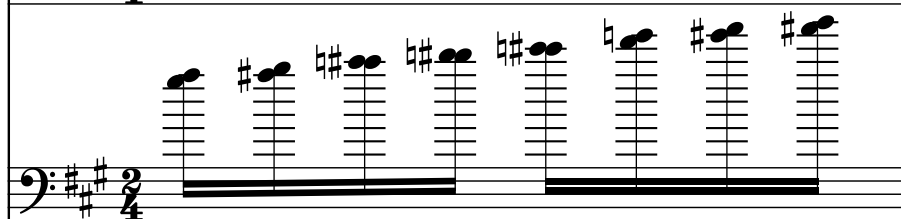
pianogame.org

♩ = 168

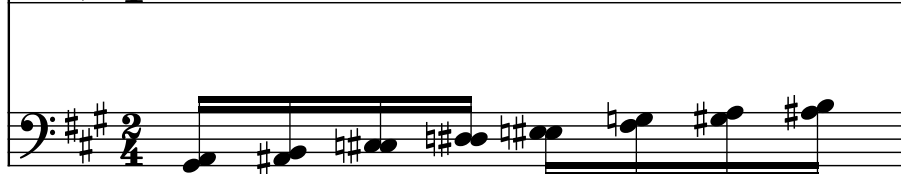
Large Drum Kit, Percussion



Bass Guitar, from Gokujiyo Parodius



Brass Synthesizer, sequenced by

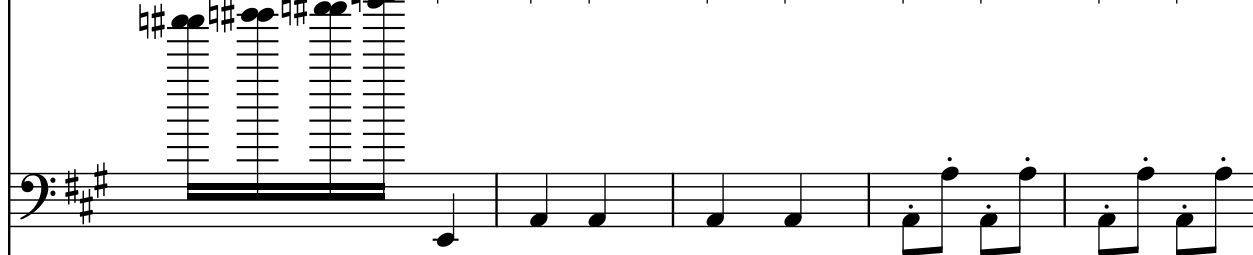


2

D. Kit



B. Guit.



Synth.



7

D. Kit



B. Guit.



Synth.



12

D. Kit

B. Guit.

Synth.

Measures 12-16: D. Kit (Drum Kit) has a snare drum on measures 12, 13, 14, 15, and 16. B. Guit. (Bass Guitar) has a bass line starting on measure 12 and continuing through measure 16. Synth. (Synthesizer) has a melody line starting on measure 12 and continuing through measure 16. The key signature is one sharp (F#) and the time signature is 4/4.

17

D. Kit

B. Guit.

Synth.

Measures 17-22: D. Kit (Drum Kit) has a snare drum on measures 17, 18, 19, 20, and 21. B. Guit. (Bass Guitar) has a bass line starting on measure 17 and continuing through measure 22. Synth. (Synthesizer) has a melody line starting on measure 17 and continuing through measure 22. The key signature is one sharp (F#) and the time signature is 4/4.

23

D. Kit

B. Guit.

Synth.

Measures 23-28: D. Kit (Drum Kit) has a snare drum on measures 23, 24, 25, 26, 27, and 28. B. Guit. (Bass Guitar) has a bass line starting on measure 23 and continuing through measure 28. Synth. (Synthesizer) has a melody line starting on measure 23 and continuing through measure 28. The key signature is one sharp (F#) and the time signature is 4/4.

29

D. Kit

B. Guit.

Synth.

Measures 29-34: D. Kit (Drum Kit) has a snare drum on measures 29, 30, 31, 32, 33, and 34. B. Guit. (Bass Guitar) has a bass line starting on measure 29 and continuing through measure 34. Synth. (Synthesizer) has a melody line starting on measure 29 and continuing through measure 34. The key signature is one sharp (F#) and the time signature is 4/4.

35

D. Kit

B. Guit.

Synth.

Measures 35-39: D. Kit plays a rhythmic pattern with eighth and sixteenth notes. B. Guit. plays a bass line with eighth notes. Synth. plays a melody with eighth notes and chords.

40

D. Kit

B. Guit.

Synth.

Measures 40-45: D. Kit plays a rhythmic pattern with eighth and sixteenth notes. B. Guit. plays a bass line with eighth notes. Synth. plays a melody with eighth notes and chords.

46

D. Kit

B. Guit.

Synth.

Measures 46-50: D. Kit plays a rhythmic pattern with eighth and sixteenth notes. B. Guit. plays a bass line with eighth notes. Synth. plays a melody with eighth notes and chords.

51

D. Kit

B. Guit.

Synth.

Measures 51-55: D. Kit plays a rhythmic pattern with eighth and sixteenth notes. B. Guit. plays a bass line with eighth notes. Synth. plays a melody with eighth notes and chords.

56

D. Kit

B. Guit.

Synth.

Measures 56-59. D. Kit plays a rhythmic pattern of eighth notes. B. Guit. plays a bass line with eighth notes. Synth. plays a melody with eighth notes and a final flourish.

60

D. Kit

B. Guit.

Synth.

Measures 60-64. D. Kit plays a rhythmic pattern of eighth notes. B. Guit. plays a bass line with eighth notes and a complex chordal section. Synth. plays a melody with eighth notes.

65

D. Kit

B. Guit.

Synth.

Measures 65-70. D. Kit plays a rhythmic pattern of eighth notes. B. Guit. plays a bass line with eighth notes and a complex chordal section. Synth. plays a melody with eighth notes.

71

D. Kit

B. Guit.

Synth.

Measures 71-75. D. Kit plays a rhythmic pattern of eighth notes. B. Guit. plays a bass line with eighth notes. Synth. plays a melody with eighth notes.

77

D. Kit

B. Guit.

Synth.

Measures 77-82. D. Kit: Snare drum pattern with eighth notes and accents. B. Guit.: Bass line with eighth notes and a descending sequence. Synth.: Treble clef with a melodic line of eighth and sixteenth notes.

83

D. Kit

B. Guit.

Synth.

Measures 83-87. D. Kit: Snare drum pattern with eighth notes and accents. B. Guit.: Bass line with eighth notes and a descending sequence. Synth.: Treble clef with a melodic line of eighth and sixteenth notes.

88

D. Kit

B. Guit.

Synth.

Measures 88-93. D. Kit: Snare drum pattern with eighth notes and accents. B. Guit.: Bass line with eighth notes and a descending sequence. Synth.: Treble clef with a melodic line of eighth and sixteenth notes.

94

D. Kit

B. Guit.

Synth.

Measures 94-99. D. Kit: Snare drum pattern with eighth notes and accents. B. Guit.: Bass line with eighth notes and a descending sequence. Synth.: Treble clef with a melodic line of eighth and sixteenth notes.

99

D. Kit

B. Guit.

Synth.

The musical score for measures 99-103 is presented in three staves. The top staff, labeled 'D. Kit', uses a drum kit notation with a key signature of one sharp (F#). It begins with a pattern of eighth notes and continues with a sequence of eighth notes and quarter notes. The middle staff, labeled 'B. Guit.', uses a bass guitar notation with a key signature of one sharp (F#). It begins with a sequence of notes and continues with a pattern of eighth notes and quarter notes. The bottom staff, labeled 'Synth.', uses a synthesizer notation with a key signature of one sharp (F#). It begins with a sequence of notes and continues with a pattern of eighth notes and quarter notes.

104

D. Kit

B. Guit.

Synth.