

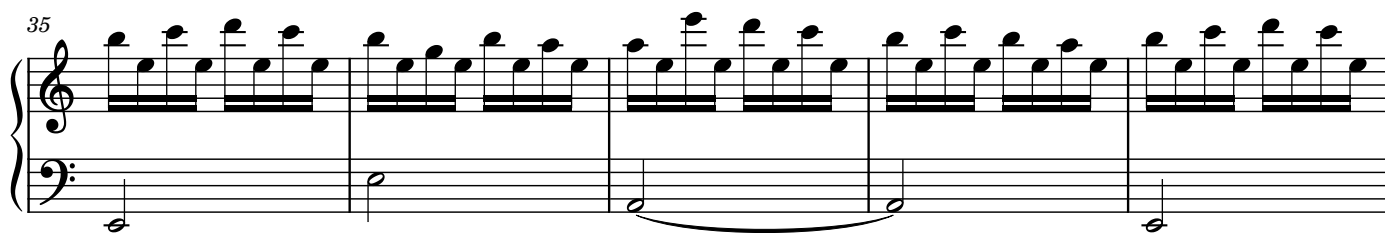
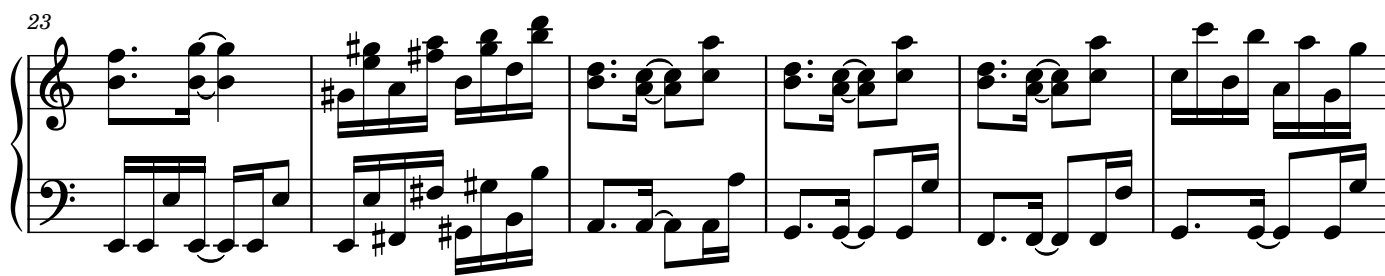
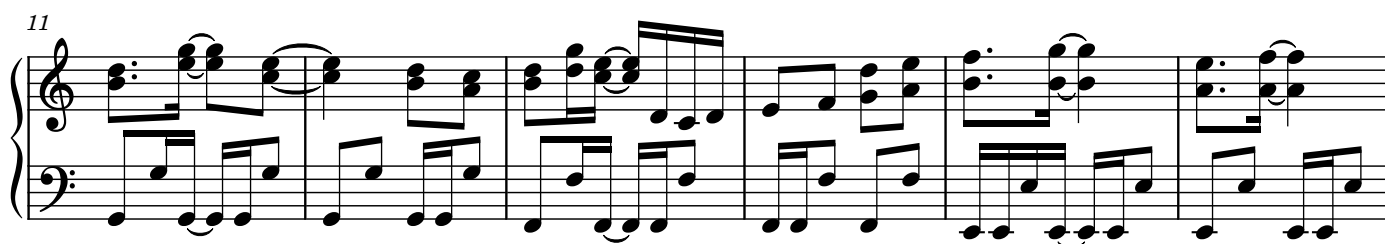
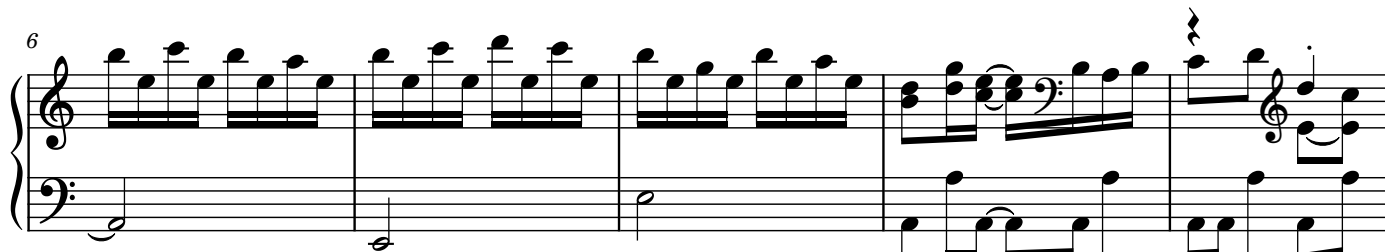
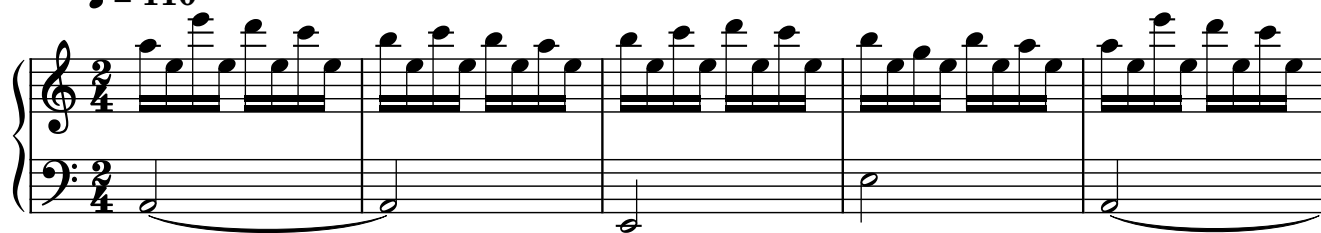
Bloody Tears

Composer: Kenichi Matsubara

Game: Castlevania 2: Simon's Quest

pianogame.org

♩ = 110



40

Measures 40-45 of a piano piece. The right hand features a melodic line with eighth and sixteenth notes, while the left hand provides a steady eighth-note accompaniment. A fermata is placed over the final note of measure 45.

46

Measures 46-51 of a piano piece. The right hand continues the melodic development with various chordal textures, and the left hand maintains the eighth-note accompaniment. A fermata is placed over the final note of measure 51.

52

Measures 52-57 of a piano piece. The right hand introduces a key change to D major, indicated by two sharps. The left hand continues the eighth-note accompaniment. A fermata is placed over the final note of measure 57.

58

Measures 58-63 of a piano piece. The right hand features a series of chords, some with fermatas, while the left hand continues the eighth-note accompaniment. A fermata is placed over the final note of measure 63.

64

Measures 64-65 of a piano piece. The right hand plays a final chordal figure, and the left hand concludes the eighth-note accompaniment. A double bar line is at the end of measure 65.