

# Last Battle

Composer: Kazuyuki Onui

Game: Dual Orb (Japan)

[pianogame.org](http://pianogame.org)

♩ = 120    ♩ = 140

Bass Guitar, Slp Bs.

String Synthesizer

This system contains measures 1 through 4 of the piece. The Bass Guitar part (labeled 'Bass Guitar, Slp Bs.') is in 4/4 time with a key signature of one sharp (F#). It begins with a whole rest in measure 1, followed by eighth-note runs in measures 2, 3, and 4. The String Synthesizer part consists of two staves. The upper staff has a whole rest in measure 1, a half note in measure 2, and a half note with a slur in measure 3. The lower staff has a whole rest in measure 1, a half note in measure 2, and a triplet of eighth notes in measure 3, indicated by a bracket and the number '3'.

5

B. Guit.

Synth.

This system contains measures 5 through 8. The Bass Guitar part (labeled 'B. Guit.') continues with eighth-note runs. The String Synthesizer part (labeled 'Synth.') has a half note in measure 5, a whole rest in measure 6, and a half note with a slur in measure 7. The lower staff has a whole rest in measure 5, a half note in measure 6, and a triplet of eighth notes in measure 7, indicated by a bracket and the number '3'.

9

B. Guit.

Synth.

This system contains measures 9 through 11. The Bass Guitar part continues with eighth-note runs. The String Synthesizer part has a half note in measure 9, a whole rest in measure 10, and a whole rest in measure 11. The lower staff has a whole rest in measure 9, a whole rest in measure 10, and a whole rest in measure 11.

12

B. Guit.

Synth.

This system contains measures 12 through 14. The Bass Guitar part continues with eighth-note runs. The String Synthesizer part has a half note in measure 12, a half note with a slur in measure 13, and a whole rest in measure 14. The lower staff has a whole rest in measure 12, a half note with a slur in measure 13, and a whole rest in measure 14.

15

B. Guit.

Synth.

This system contains measures 15 through 17. The Bass Guitar part continues with eighth-note runs. The String Synthesizer part has a half note in measure 15, a half note with a slur in measure 16, and a whole rest in measure 17. The lower staff has a whole rest in measure 15, a half note with a slur in measure 16, and a whole rest in measure 17.

18

B. Guit.

Synth.

Measures 18-19. B. Guit. (Bass Guitar) plays a continuous eighth-note line in the bass clef. Synth. (Synthesizer) has a treble and bass clef; the treble clef has a melodic line with accidentals, and the bass clef has whole rests.

20

B. Guit.

Synth.

Measures 20-22. B. Guit. (Bass Guitar) continues the eighth-note line. Synth. (Synthesizer) has a treble and bass clef; the treble clef has a melodic line with accidentals, and the bass clef has whole rests.

23

B. Guit.

Synth.

Measures 23-24. B. Guit. (Bass Guitar) continues the eighth-note line. Synth. (Synthesizer) has a treble and bass clef; the treble clef has a melodic line with accidentals, and the bass clef has whole rests.

25

B. Guit.

Synth.

Measures 25-26. B. Guit. (Bass Guitar) continues the eighth-note line. Synth. (Synthesizer) has a treble and bass clef; the treble clef has a melodic line with accidentals, and the bass clef has whole rests.

27

B. Guit.

Synth.

Measures 27-29. B. Guit. (Bass Guitar) continues the eighth-note line. Synth. (Synthesizer) has a treble and bass clef; the treble clef has a melodic line with accidentals, and the bass clef has whole rests.

30

B. Guit.

Synth.

Measures 30-31. B. Guit. plays a continuous eighth-note line in the bass clef. Synth. has a treble and bass clef staff. Treble clef has a melodic line with eighth and sixteenth notes. Bass clef has whole rests.

32

B. Guit.

Synth.

Measures 32-34. B. Guit. continues the eighth-note line. Synth. treble clef has whole rests for measures 32 and 33, then a melodic phrase in measure 34. Synth. bass clef has whole rests throughout.

35

B. Guit.

Synth.

Measures 35-37. B. Guit. continues the eighth-note line. Synth. treble clef has a melodic phrase in measure 35, then whole rests. Synth. bass clef has whole rests throughout.

38

B. Guit.

Synth.

Measures 38-40. B. Guit. continues the eighth-note line. Synth. treble clef has whole rests for measures 38 and 39, then a melodic phrase in measure 40. Synth. bass clef has whole rests throughout.

41

B. Guit.

Synth.

Measures 41-43. B. Guit. continues the eighth-note line. Synth. treble clef has whole rests for measures 41 and 42, then a melodic phrase in measure 43. Synth. bass clef has whole rests throughout.

44

B. Guit.

Synth.

3

Measures 44-46. Bass guitar (B. Guit.) plays a continuous eighth-note line in the bass clef. Synth (Synth.) has a triplet of eighth notes in measure 45, indicated by a bracket and the number 3. The key signature has one sharp (F#).

47

B. Guit.

Synth.

3

Measures 47-49. Bass guitar (B. Guit.) plays a continuous eighth-note line in the bass clef. Synth (Synth.) has a triplet of eighth notes in measure 47, indicated by a bracket and the number 3. The key signature has one sharp (F#).

49

B. Guit.

Synth.

3

Measures 49-51. Bass guitar (B. Guit.) plays a continuous eighth-note line in the bass clef. Synth (Synth.) has a triplet of eighth notes in measure 49, indicated by a bracket and the number 3. The key signature has one sharp (F#).

52

B. Guit.

Synth.

Measures 52-54. Bass guitar (B. Guit.) plays a continuous eighth-note line in the bass clef. Synth (Synth.) has a complex melodic line in measure 52, including a flat (b) and a sharp (#). In measure 54, the synth part changes to a new melodic line. The key signature has one sharp (F#).

54

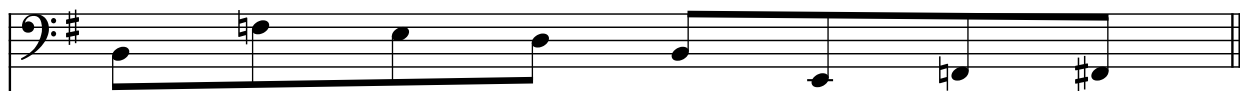
B. Guit.

Synth.

Measures 54-56. Bass guitar (B. Guit.) plays a continuous eighth-note line in the bass clef. Synth (Synth.) has a short melodic phrase in measure 56. The key signature has one sharp (F#).

57

B. Guit.



Synth.

