

# Zone 2 - Sunset Hill: Map (XG)

Composer: Hideaki Kobayashi

Game: Sonic Advance 3

[pianogame.org](http://pianogame.org)

♩ = 135

Bass Synthesizer, Synth Bass



Brass, Brass Section 2 (Left)



Hammond Organ, Cheezy Hammond (Right)

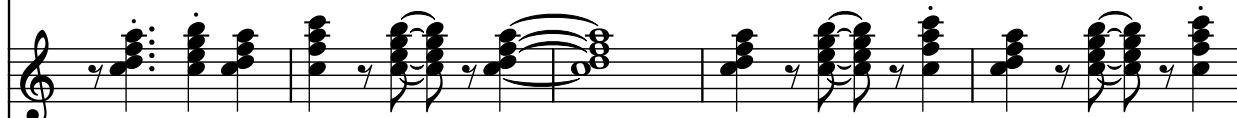


3

Synth.



Br.



Hm. Org.



8

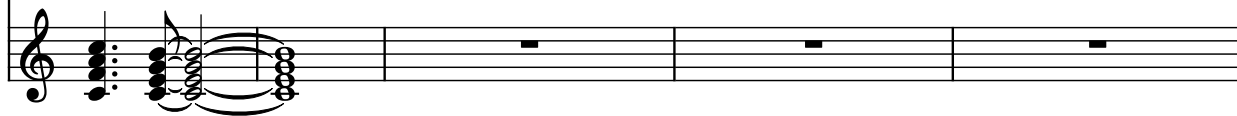
Synth.



Br.



Hm. Org.



13

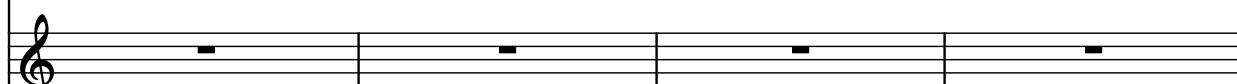
Synth.



Br.



Hm. Org.



17

Synth.

Br.

Hm. Org.

Measures 17-19: Synth. plays a continuous eighth-note pattern. Br. is silent. Hm. Org. plays chords in measures 18 and 19.

20

Synth.

Br.

Hm. Org.

Measures 20-23: Synth. continues the eighth-note pattern. Br. is silent. Hm. Org. plays chords in measures 20, 21, 22, and 23.

24

Synth.

Br.

Hm. Org.

Measures 24-26: Synth. continues the eighth-note pattern. Br. is silent. Hm. Org. plays chords in measures 24 and 25.

27

Synth.

Br.

Hm. Org.

Measures 27-30: Synth. continues the eighth-note pattern. Br. is silent. Hm. Org. is silent.

31

Synth.

Br.

Hm. Org.

Measures 31-33: Synth. (bass clef) plays a descending eighth-note pattern. Br. and Hm. Org. are silent.

34

Synth.

Br.

Hm. Org.

Measures 34-37: Synth. (bass clef) continues the descending eighth-note pattern. Br. is silent. Hm. Org. (treble clef) plays a complex pattern of chords and eighth notes.

38

Synth.

Br.

Hm. Org.

Measures 38-40: Synth. (bass clef) continues the descending eighth-note pattern. Br. is silent. Hm. Org. (treble clef) continues the complex pattern of chords and eighth notes.

41

Synth.

Br.

Hm. Org.

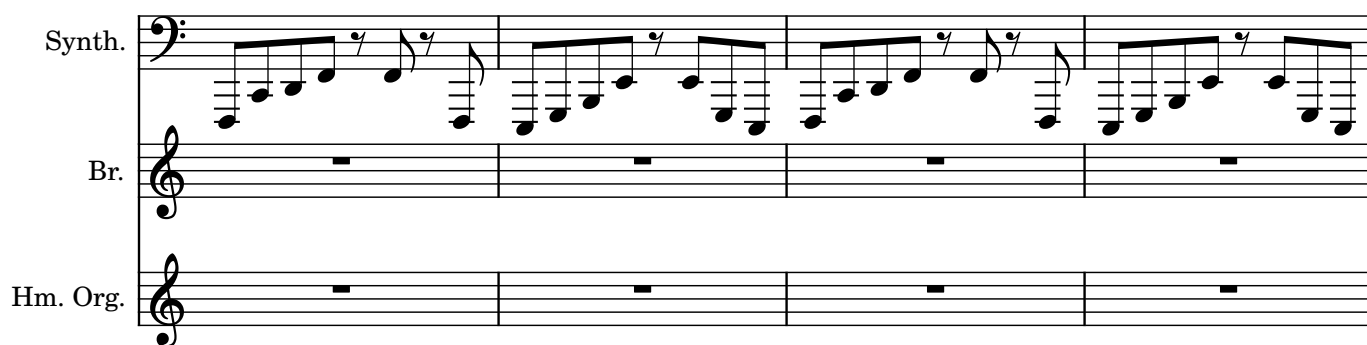
Measures 41-43: Synth. (bass clef) continues the descending eighth-note pattern. Br. and Hm. Org. are silent.

44

Synth.

Br.

Hm. Org.

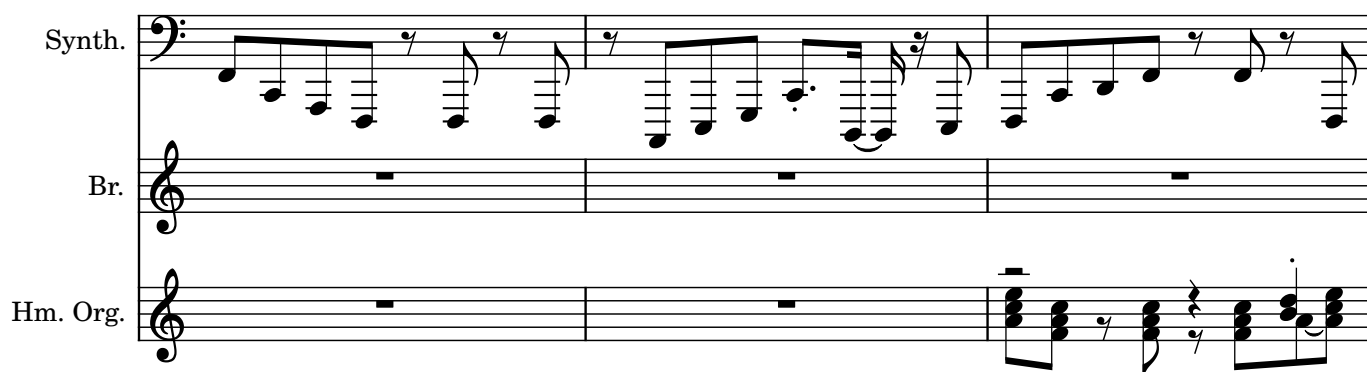


48

Synth.

Br.

Hm. Org.



51

Synth.

Br.

Hm. Org.

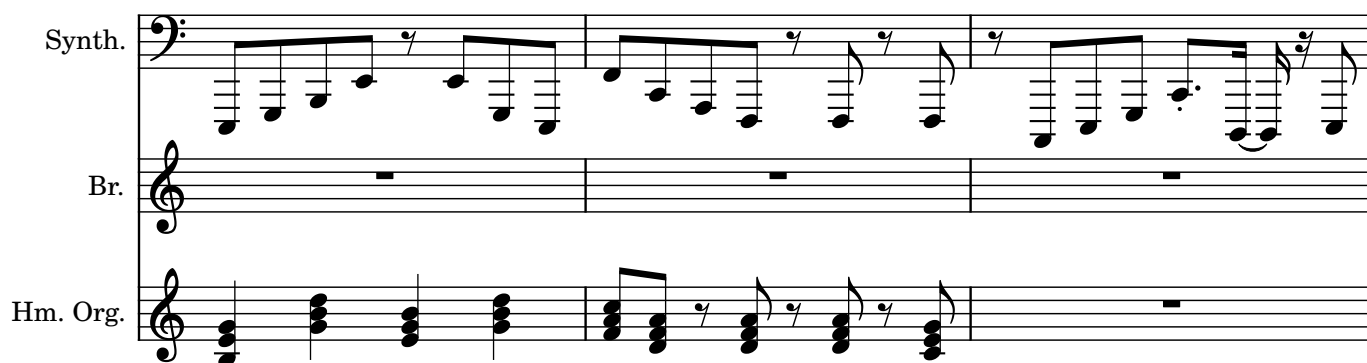


55

Synth.

Br.

Hm. Org.



58

Synth.

Br.

Hm. Org.

The image shows a musical score for three staves. The top staff, labeled 'Synth.', is in bass clef and contains four measures of music. Each measure consists of a descending eighth-note scale starting from G2, with a repeat sign after the eighth note. The middle staff, labeled 'Br.', and the bottom staff, labeled 'Hm. Org.', both contain whole rests for all four measures. The score concludes with a double bar line at the end of the fourth measure.