

Island Map - "Welcome to Crocodile Isle" (4)

Composer: David Wise

Game: Donkey Kong Country 2

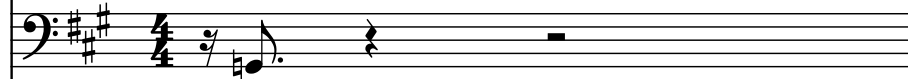
pianogame.org

♩ = 120

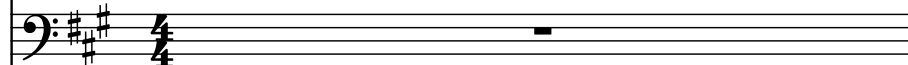
Trumpet, Strings A/Trombone A



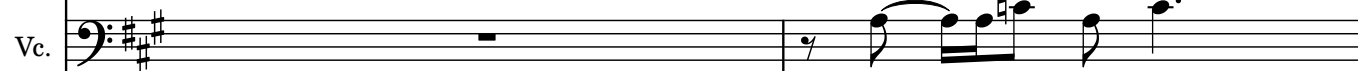
Contrabass, Timpani A/Strings B



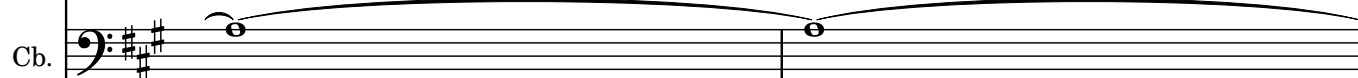
Violoncello, Harmonica/Trombone B



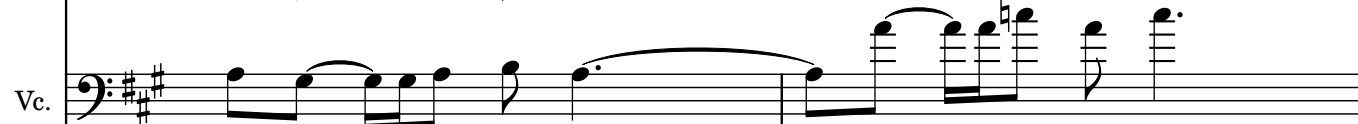
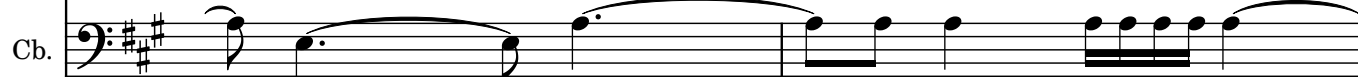
2



4



6



8



10

Tpt.

Cb.

Vc.

Measures 10-11. Tpt. (Trumpet) plays a melodic line in G major. Cb. (Cello) plays a bass line with eighth notes. Vc. (Violoncello) plays a bass line with eighth notes and a rest in measure 11.

12

Tpt.

Cb.

Vc.

Measures 12-13. Tpt. (Trumpet) plays a melodic line in G major. Cb. (Cello) plays a bass line with eighth notes and a rest in measure 13. Vc. (Violoncello) plays a bass line with eighth notes and a rest in measure 13.

14

Tpt.

Cb.

Vc.

Measures 14-15. Tpt. (Trumpet) plays a melodic line in G major. Cb. (Cello) plays a bass line with eighth notes and a rest in measure 15. Vc. (Violoncello) plays a bass line with eighth notes and a rest in measure 15.

16

Tpt.

Cb.

Vc.

Measures 16-17. Tpt. (Trumpet) plays a melodic line in G major. Cb. (Cello) plays a bass line with eighth notes and a rest in measure 17. Vc. (Violoncello) plays a bass line with eighth notes and a rest in measure 17.

18

18

Tpt.

Cb.

Vc.

20

20

Tpt.

Cb.

Vc.

22

22

Tpt.

Cb.

Vc.

24

24

Tpt.

Cb.

Vc.

26

Tpt.

Cb.

Vc.

This musical system contains measures 26 and 27. The Tpt. (Trumpet) part is in treble clef with a key signature of three flats (B-flat, E-flat, A-flat). It begins with a half note G4, followed by eighth notes F4, E4, D4, and C4, then a half note B3, and finally a continuous eighth-note scale descending from A3 to C3. The Cb. (Contrabass) part is in bass clef with a key signature of three sharps (F-sharp, C-sharp, G-sharp). It features a half note G2, followed by a half note F2, and then a half note E2, each with a long slur. The Vc. (Violoncello) part is in bass clef with a key signature of three sharps. It starts with a half note G2, followed by eighth notes F2, E2, D2, and C2, then a half note B1, and continues with a series of eighth-note chords (G2-A2, F2-G2, E2-F2, D2-E2, C2-D2) before ending with a half note G2.

28

Tpt.

Cb.

Vc.

This musical system contains measures 28 and 29. The Tpt. part continues with a half note G4, followed by eighth notes F4, E4, D4, and C4, then a half note B3, and ends with a half note A3. The Cb. part continues with a half note G2, followed by a half note F2, and then a half note E2, each with a long slur. The Vc. part continues with a half note G2, followed by eighth notes F2, E2, D2, and C2, then a half note B1, and continues with a series of eighth-note chords (G2-A2, F2-G2, E2-F2, D2-E2, C2-D2) before ending with a half note G2.