

Aries Palace

Composer: Seiji Yokoyama

Game: Saint Seiya: Chapter Sanctuary

pianogame.org

♩ = 148

5-str. Electric Bass, Bass

Contrabass, Bass2

Violins (section), Strings

4

El. B.

Cb.

Vlns.

7

El. B.

Cb.

Vlns.

10

El. B.

Cb.

Vlns.

13

El. B.

Cb.

Vlns.

8

16

El. B.

Cb.

Vlns.

19

El. B.

Cb.

Vlns.

22

El. B.

Cb.

Vlns.

25

3

El. B.

Cb.

Vlns.

28

El. B.

Cb.

Vlns.

31

El. B.

Cb.

Vlns.

Measures 31-33: Euphonium and Trombone parts play a rhythmic pattern of eighth and quarter notes. The Violin part is silent.

34

El. B.

Cb.

Vlns.

Measures 34-36: Euphonium and Trombone parts continue their rhythmic pattern. The Violin part is silent.

37

El. B.

Cb.

Vlns.

Measures 37-39: Euphonium and Trombone parts continue their rhythmic pattern. The Violin part is silent.

40

El. B.

Cb.

Vlns.

Measures 40-42: Euphonium and Trombone parts continue their rhythmic pattern. The Violin part is silent.

43

El. B.

Cb.

Vlns.

Measures 43-45: Euphonium and Trombone parts continue their rhythmic pattern. The Violin part is silent.

46

El. B.

Cb.

Vlns.

Measures 46-48. El. B. and Cb. play a rhythmic pattern of eighth notes with slurs. Vlns. play a melodic line starting in measure 47.

49

3

El. B.

Cb.

Vlns.

Measures 49-51. El. B. and Cb. continue the rhythmic pattern. Vlns. play a melodic line with a triplet in measure 50.

52

El. B.

Cb.

Vlns.

Measures 52-54. El. B. and Cb. continue the rhythmic pattern. Vlns. play a melodic line with a triplet in measure 53.

55

3

El. B.

Cb.

Vlns.

Measures 55-58. El. B. and Cb. play a continuous eighth-note pattern. Vlns. play a continuous eighth-note pattern.

59

El. B.

Cb.

Vlns.

Measures 59-61. El. B. and Cb. continue the eighth-note pattern. Vlns. are silent.

62

El. B.

Cb.

Vlns.

Measures 62-64. The Euphonium (El. B.) and Contrabass (Cb.) parts play a rhythmic pattern of eighth and quarter notes. The Violins (Vlns.) part is mostly silent, with a final chord in measure 64.

65

El. B.

Cb.

Vlns.

Measures 65-67. The Euphonium (El. B.) and Contrabass (Cb.) parts continue their rhythmic pattern. The Violins (Vlns.) part enters in measure 65 with a melodic line and continues through measure 67.

68

El. B.

Cb.

Vlns.

Measures 68-70. The Euphonium (El. B.) and Contrabass (Cb.) parts continue their rhythmic pattern. The Violins (Vlns.) part continues with a melodic line, featuring a long note in measure 68.

71

El. B.

Cb.

Vlns.

Measures 71-73. The Euphonium (El. B.) and Contrabass (Cb.) parts continue their rhythmic pattern. The Violins (Vlns.) part continues with a melodic line, featuring a long note in measure 71.

74

El. B.

Cb.

Vlns.

Measures 74-76. The Euphonium (El. B.) and Contrabass (Cb.) parts continue their rhythmic pattern. The Violins (Vlns.) part continues with a melodic line, featuring a long note in measure 74.

77

El. B.

Cb.

Vlns.

80

El. B.

Cb.

Vlns.

83

El. B.

Cb.

Vlns.

86

El. B.

Cb.

Vlns.

89

El. B.

Cb.

Vlns.

92

El. B.

Cb.

Vlns.

95

El. B.

Cb.

Vlns.

98

El. B.

Cb.

Vlns.

101

3

El. B.

Cb.

Vlns.

104

El. B.

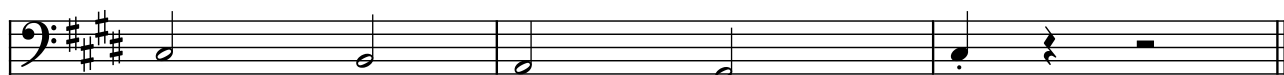
Cb.

Vlns.

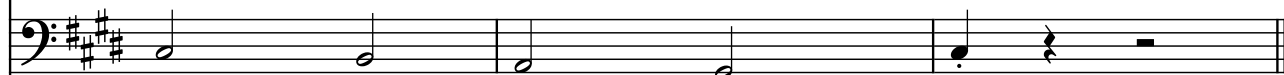
107

♩ = 140

El. B.



Cb.



Vlins.

