

# **Cosmic Wall - "Soarin' Over the Space"**

Composer: Jun Senoue

Game: Sonic Adventure 2

[pianogame.org](http://pianogame.org)

♩ = 130

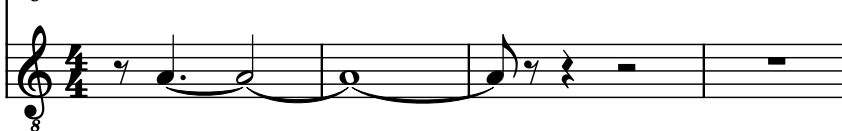
Electric Guitar, Guitar Harmonics



Electric Guitar, Guitar Harmonics (echo)

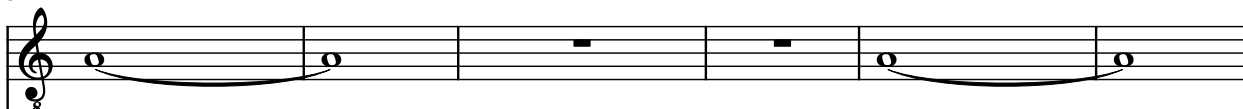


Electric Guitar, Guitar Harmonics (echo)

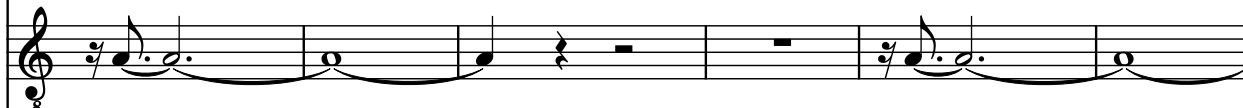


5

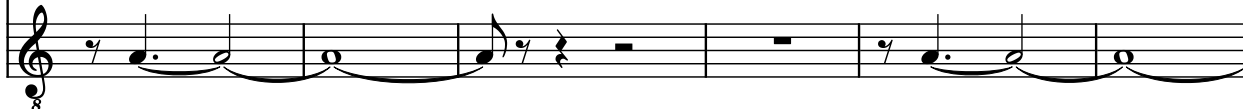
El. Guit.



El. Guit.



El. Guit.

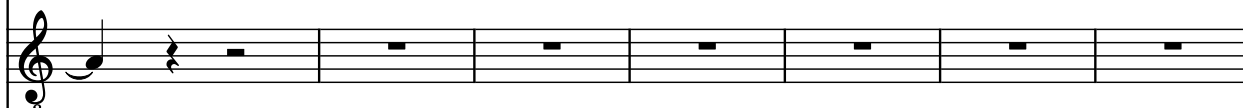


11

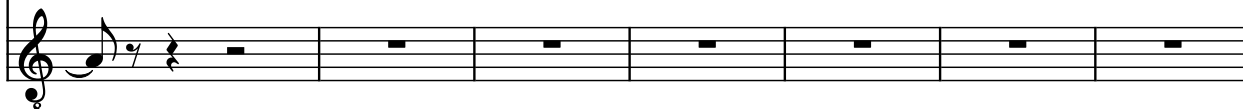
El. Guit.



El. Guit.

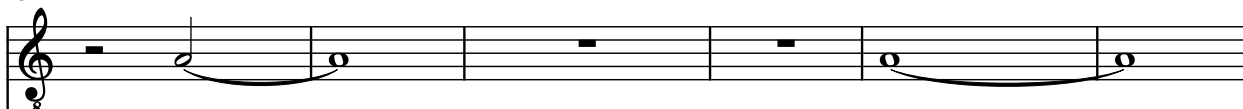


El. Guit.



18

El. Guit.



El. Guit.



El. Guit.



24

El. Guit.

El. Guit.

El. Guit.

31

El. Guit.

El. Guit.

El. Guit.

38

El. Guit.

El. Guit.

El. Guit.

45

El. Guit.

El. Guit.

El. Guit.

53

El. Guit.

El. Guit.

El. Guit.

59

El. Guit.

El. Guit.

El. Guit.

66

El. Guit.

El. Guit.

El. Guit.

73

El. Guit.

El. Guit.

El. Guit.

Three staves of musical notation for electric guitar, labeled "El. Guit.". The first measure of each staff has a tempo marking of 80. The notation includes eighth notes, quarter notes, and rests.

87

El. Guit.

El. Guit.

El. Guit.

The image shows three staves of music for electric guitar, labeled 'El. Guit.' on the left. The first staff begins with a measure number '87' above the first staff line. Each staff has a treble clef and a key signature of one sharp (F#). The first staff contains a series of whole notes: G4 (quarter rest), A4 (quarter note), B4 (half note), C5 (quarter rest), D5 (quarter rest), E5 (quarter rest), F#5 (half note), and G5 (half note). The second staff contains: G4 (quarter rest), A4 (quarter note), B4 (half note), C5 (quarter note), D5 (quarter note), E5 (quarter rest), F#5 (quarter rest), G5 (quarter rest), A4 (quarter note), B4 (half note), C5 (quarter note), and D5 (half note). The third staff contains: G4 (quarter rest), A4 (quarter note), B4 (half note), C5 (quarter note), D5 (quarter note), E5 (quarter rest), F#5 (quarter rest), G5 (quarter rest), A4 (quarter note), B4 (half note), C5 (quarter note), and D5 (half note). The notation includes various rests, quarter notes, half notes, and eighth notes, with some notes beamed together.

94

El. Guit.

El. Guit.

El. Guit.

Detailed description: This image shows measures 94 through 100 of a musical score for three electric guitar parts. The score is written in treble clef with a key signature of one flat (Bb). Measure 94 starts with a common time signature 'C'. The first staff (top) has a whole rest in measure 94, followed by a whole note Bb in measure 95, and a whole note Bb in measure 96. The second staff (middle) has a quarter note Bb in measure 94, a quarter rest in measure 95, a quarter note Bb in measure 96, and a quarter note Bb in measure 97. The third staff (bottom) has a quarter note Bb in measure 94, a quarter rest in measure 95, a quarter note Bb in measure 96, and a quarter note Bb in measure 97. Measures 98 through 100 are marked with a double bar line and repeat dots, indicating a repeat of the previous measures.

101

El. Guit.

El. Guit.

El. Guit.

108

El. Guit.

The image shows three staves of musical notation for electric guitar, labeled 'El. Guit.' on the left. The first staff begins with a treble clef, a key signature of one sharp (F#), and a common time signature (C). A measure rest is followed by a half note G4, which is tied to a half note G4 in the next measure. The third measure contains a whole note G4. The fourth measure contains a measure rest. The second staff begins with a treble clef, a key signature of one sharp (F#), and a common time signature (C). A measure rest is followed by a quarter rest, then a dotted quarter note G4, an eighth note A4, and a dotted half note G4. The third measure contains a whole note G4. The fourth measure contains a half note G4. The fifth measure contains a quarter rest, and the sixth measure contains a measure rest. The third staff begins with a treble clef, a key signature of one sharp (F#), and a common time signature (C). A measure rest is followed by a quarter rest, then a dotted quarter note G4, an eighth note A4, and a dotted half note G4. The third measure contains a whole note G4. The fourth measure contains a half note G4. The fifth measure contains a quarter rest, and the sixth measure contains a measure rest. Each staff ends with a double bar line.