

# Reshiram Battle (Remix)

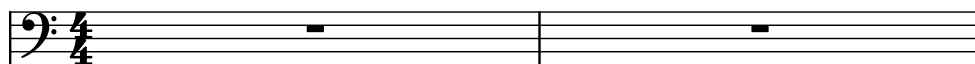
Composer: Junichi Masuda

Game: Pokémon (Black, White)

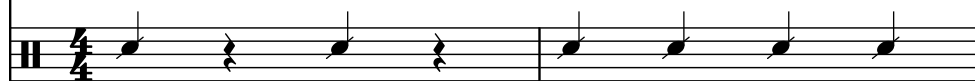
[pianogame.org](http://pianogame.org)

♩ = 140

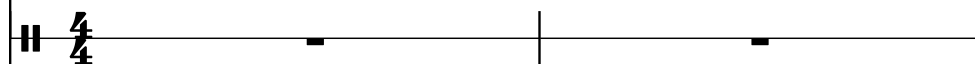
Bass Synthesizer, Bass (BB)



Large Drum Kit, Drums (BB)

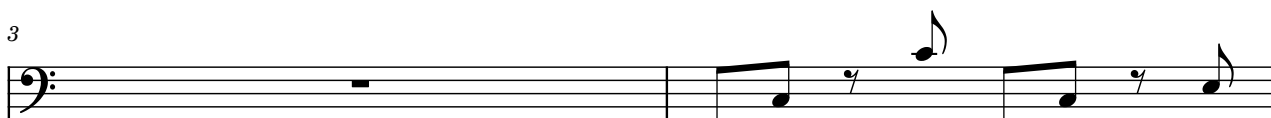


Bongos, Piano (BB)

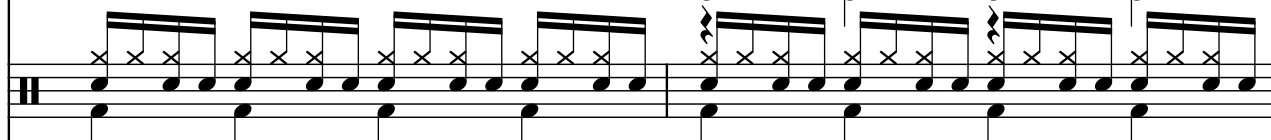


3

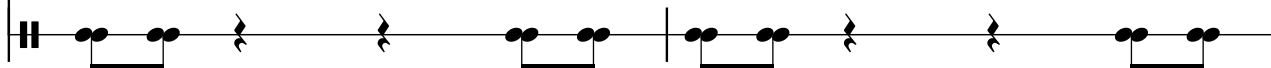
Synth.



D. Kit



Bon.



5

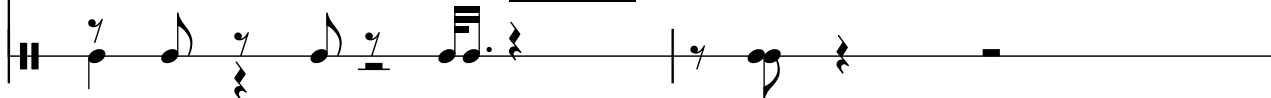
Synth.



D. Kit



Bon.

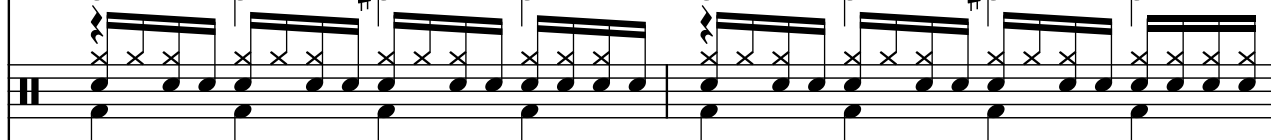


7

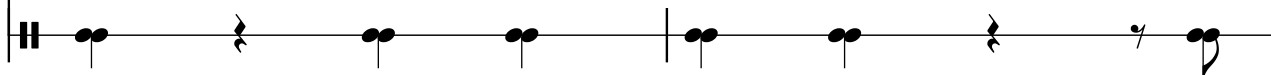
Synth.



D. Kit



Bon.



9

Synth.

D. Kit

Bon.

11

Synth.

D. Kit

Bon.

13

Synth.

D. Kit

Bon.

15

Synth.

D. Kit

Bon.

17

Synth.

D. Kit

Bon.

Measures 17-18. Synth. has a long note with a slur. D. Kit has a continuous eighth-note pattern. Bon. has a simple bass line with eighth notes and rests.

19

Synth.

D. Kit

Bon.

Measures 19-20. Synth. has a melody with eighth notes and a sharp. D. Kit has a continuous eighth-note pattern. Bon. has a simple bass line with eighth notes and rests.

21

Synth.

D. Kit

Bon.

Measures 21-22. Synth. has a melody with eighth notes and a sharp. D. Kit has a continuous eighth-note pattern. Bon. has a simple bass line with eighth notes and rests.

23

Synth.

D. Kit

Bon.

Measures 23-24. Synth. has a melody with eighth notes and a sharp. D. Kit has a continuous eighth-note pattern. Bon. has a simple bass line with eighth notes and rests.

25

Synth.

D. Kit

Bon.

Measures 25-26. Synth. (Bass) plays a melodic line with eighth notes and a sharp sign. D. Kit (Drum Kit) plays a continuous eighth-note pattern with 'x' marks on the snare. Bon. (Bongos) plays a simple two-beat pattern.

27

Synth.

D. Kit

Bon.

Measures 27-28. Synth. (Bass) continues the melodic line. D. Kit (Drum Kit) continues the eighth-note pattern. Bon. (Bongos) plays a two-beat pattern with a slight variation in the second measure.

29

Synth.

D. Kit

Bon.

Measures 29-30. Synth. (Bass) continues the melodic line. D. Kit (Drum Kit) continues the eighth-note pattern. Bon. (Bongos) plays a two-beat pattern with a slight variation in the second measure.

31

Synth.

D. Kit

Bon.

Measures 31-32. Synth. (Bass) continues the melodic line. D. Kit (Drum Kit) continues the eighth-note pattern. Bon. (Bongos) plays a two-beat pattern with a slight variation in the second measure.

33

Synth.

D. Kit

Bon.

35

Synth.

D. Kit

Bon.

The musical score for measures 35 and 36 consists of three staves. The top staff, labeled 'Synth.', is in bass clef and contains a melodic line with eighth and quarter notes, including some accidentals. The middle staff, labeled 'D. Kit', is in treble clef and features a complex rhythmic pattern with many sixteenth notes and eighth notes, some marked with 'x'. The bottom staff, labeled 'Bon.', is in treble clef and features a simple rhythmic pattern with eighth notes and quarter notes. The measures are separated by a double bar line.

37

Synth.

D. Kit

Bon.

39

Synth.

D. Kit

Bon.

43

Synth.

D. Kit

Bon.

45

Synth.

D. Kit

Bon.

47

Synth.

D. Kit

Bon.

49

Synth.

D. Kit

Bon.



57

Synth.

D. Kit

Bon.

Measures 57-58. Synth. part in bass clef, starting with a rest, then eighth and sixteenth notes. D. Kit part with eighth notes and 'x' marks. Bon. part with eighth notes and rests.

59

Synth.

D. Kit

Bon.

Measures 59-60. Synth. part in bass clef with eighth notes. D. Kit part with eighth notes and 'x' marks. Bon. part with eighth notes and rests.

61

Synth.

D. Kit

Bon.

Measures 61-62. Synth. part in bass clef with eighth notes and a sharp. D. Kit part with eighth notes and 'x' marks. Bon. part with eighth notes and rests.

63

Synth.

D. Kit

Bon.

Measures 63-64. Synth. part in bass clef with eighth notes and sharps. D. Kit part with eighth notes and 'x' marks. Bon. part with eighth notes and rests.

65

Synth.

D. Kit

Bon.

Measures 65-66 of a musical score. The Synth. part (bass clef) has a whole rest in measure 65 and a half note G2 in measure 66. The D. Kit part (drum kit) features a continuous eighth-note pattern of snare and kick drums. The Bon. part (bass) has a half note G2 in measure 65 and a half note G2 in measure 66.

67

Synth.

D. Kit

Bon.

Measures 67-68 of a musical score. The Synth. part (bass clef) has a half note G2 in measure 67 and a half note G2 in measure 68. The D. Kit part (drum kit) features a continuous eighth-note pattern of snare and kick drums. The Bon. part (bass) has a half note G2 in measure 67 and a half note G2 in measure 68.

69

Synth.

D. Kit

Bon.

Measures 69-70 of a musical score. The Synth. part (bass clef) has a half note G2 in measure 69 and a half note G2 in measure 70. The D. Kit part (drum kit) features a continuous eighth-note pattern of snare and kick drums. The Bon. part (bass) has a half note G2 in measure 69 and a half note G2 in measure 70.

71

Synth.

D. Kit

Bon.

Measures 71-72 of a musical score. The Synth. part (bass clef) has a half note G2 in measure 71 and a half note G2 in measure 72. The D. Kit part (drum kit) features a continuous eighth-note pattern of snare and kick drums. The Bon. part (bass) has a half note G2 in measure 71 and a half note G2 in measure 72.

73

Synth.

D. Kit

Bon.

Measures 73-74. Synth. (bass clef) has a melodic line with eighth notes and a sharp sign. D. Kit (drum kit) has a complex pattern with many 'x' marks. Bon. (bass) has a simple pattern with eighth notes and rests.

75

Synth.

D. Kit

Bon.

Measures 75-76. Synth. (bass clef) has a simple pattern with eighth notes and rests. D. Kit (drum kit) has a complex pattern with many 'x' marks. Bon. (bass) has a simple pattern with eighth notes and rests.

77

Synth.

D. Kit

Bon.

Measures 77-78. Synth. (bass clef) has a simple pattern with eighth notes and rests. D. Kit (drum kit) has a complex pattern with many 'x' marks. Bon. (bass) has a simple pattern with eighth notes and rests.

79

Synth.

D. Kit

Bon.

Measures 79-80. Synth. (bass clef) has a melodic line with eighth notes and a sharp sign. D. Kit (drum kit) has a complex pattern with many 'x' marks. Bon. (bass) has a simple pattern with eighth notes and rests.

81

Synth.

D. Kit

Bon.

83

Synth.

D. Kit

Bon.

85

Synth.

D. Kit

Bon.

87

Synth.

D. Kit

Bon.

91

Synth.

D. Kit

Bon.

93

Synth.

D. Kit

Bon.

95

Synth.

D. Kit

Bon.

97

Synth.

D. Kit

Bon.

Measure 97: Synth. (treble clef) plays a sequence of eighth notes: C4, D4, E4, F4, G4, A4, B4, C5. D. Kit (bass clef) plays a continuous eighth-note pattern: C3, D3, E3, F3, G3, A3, B3, C4. Bon. (bass clef) plays eighth-note pairs: C3-D3, E3-F3, G3-A3, B3-C4. Measure 98: Synth. (bass clef) plays a whole note chord: C3, E3, G3. D. Kit (bass clef) continues the eighth-note pattern. Bon. (bass clef) plays eighth-note pairs: C3-D3, E3-F3, G3-A3, B3-C4.

99

Synth.

D. Kit

Bon.

Measure 99: Synth. (treble clef) plays a sequence of eighth notes: C4, D4, E4, F4, G4, A4, B4, C5. D. Kit (bass clef) plays a continuous eighth-note pattern: C3, D3, E3, F3, G3, A3, B3, C4. Bon. (bass clef) plays eighth-note pairs: C3-D3, E3-F3, G3-A3, B3-C4. Measure 100: Synth. (bass clef) plays a whole note chord: C3, E3, G3. D. Kit (bass clef) continues the eighth-note pattern. Bon. (bass clef) plays eighth-note pairs: C3-D3, E3-F3, G3-A3, B3-C4.