

Area I

Composer: Hidenori Shoji

Game: Winglancer

pianogame.org

$\text{♩} = 180$

Measures 1-2 of the piece. The key signature is one sharp (F#) and the time signature is 4/4. The tempo is marked as quarter note = 180. The bass staff features a continuous eighth-note pattern: F#4, G4, A4, B4, C5, D5, E5, F#5. The treble staff has a whole note F#4 in measure 1, tied to a whole note F#4 in measure 2, with a slur over the tie.

3

Measures 3-4. The bass staff continues the eighth-note pattern. The treble staff has a whole note F#4 in measure 3, tied to a whole note F#4 in measure 4, with a slur over the tie.

5

Measures 5-6. The bass staff continues the eighth-note pattern. The treble staff has a whole note F#4 in measure 5, tied to a whole note F#4 in measure 6, with a slur over the tie.

7

Measures 7-8. The bass staff continues the eighth-note pattern. The treble staff has a whole note F#4 in measure 7, tied to a whole note F#4 in measure 8, with a slur over the tie.

9

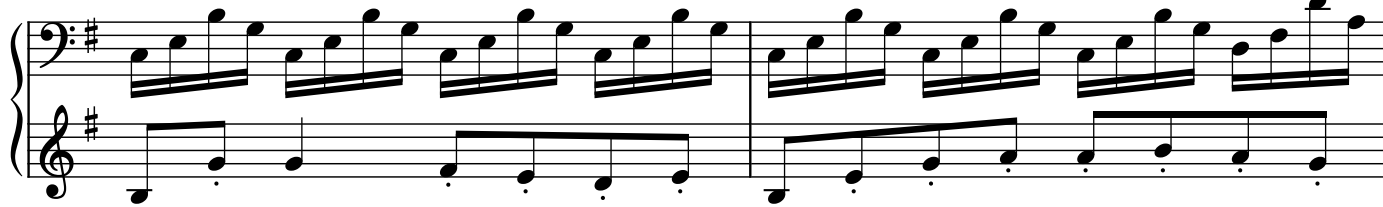
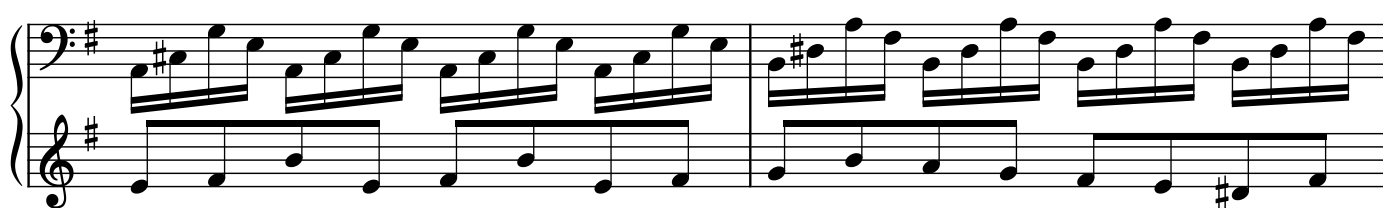
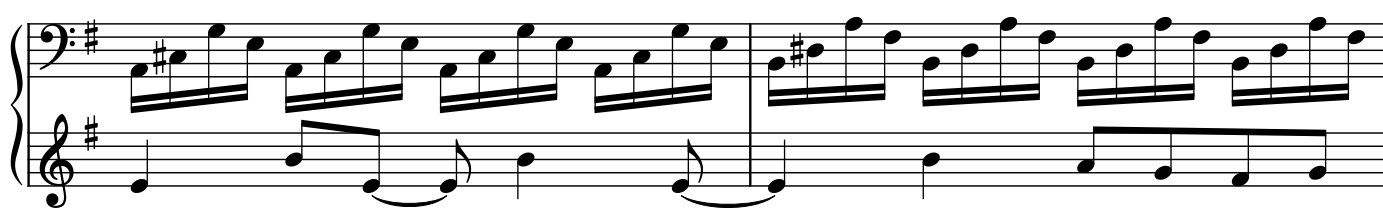
Measures 9-10. The bass staff continues the eighth-note pattern. The treble staff has a whole note F#4 in measure 9, tied to a whole note F#4 in measure 10, with a slur over the tie.

11

Measures 11-12. The bass staff continues the eighth-note pattern. The treble staff has a whole note F#4 in measure 11, tied to a whole note F#4 in measure 12, with a slur over the tie.

13

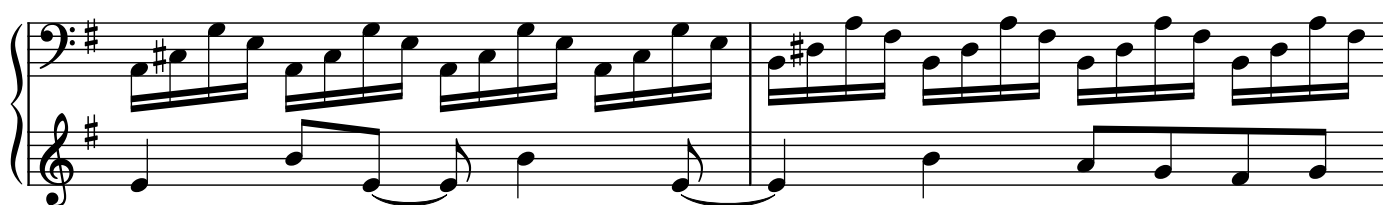
Measures 13-14. The bass staff continues the eighth-note pattern. The treble staff has a whole note F#4 in measure 13, tied to a whole note F#4 in measure 14, with a slur over the tie.



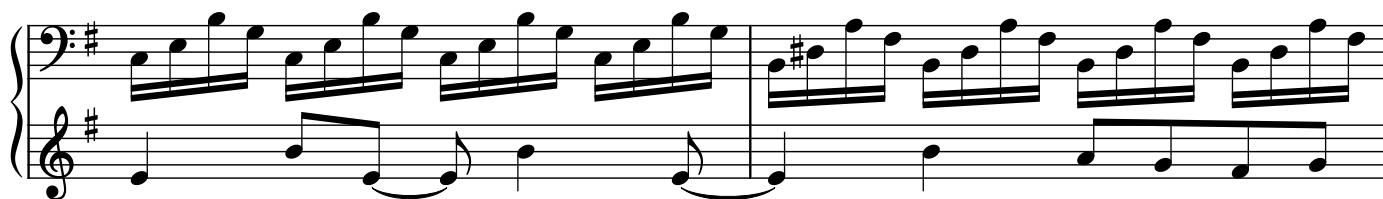
29



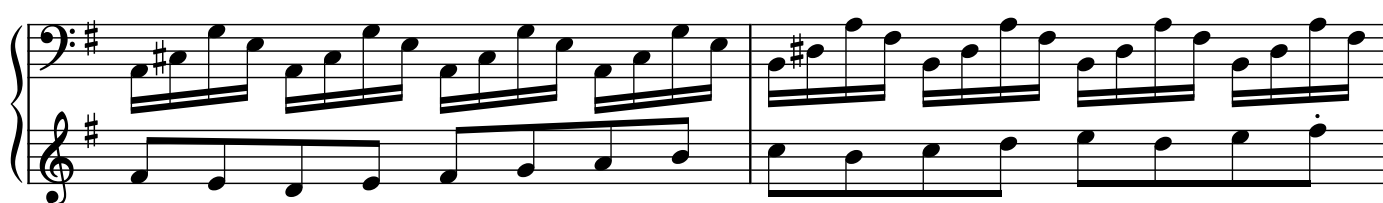
31



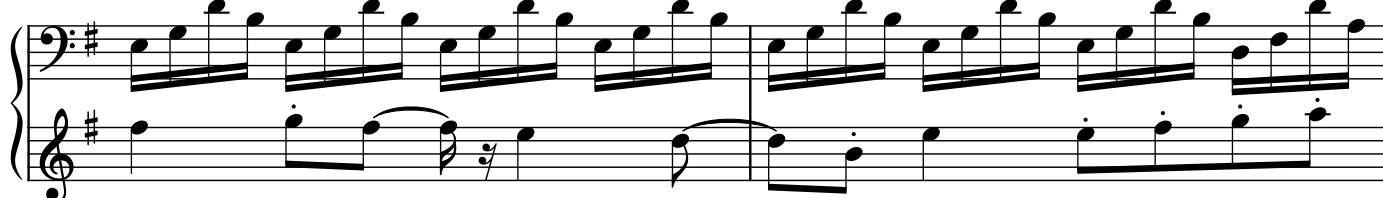
33



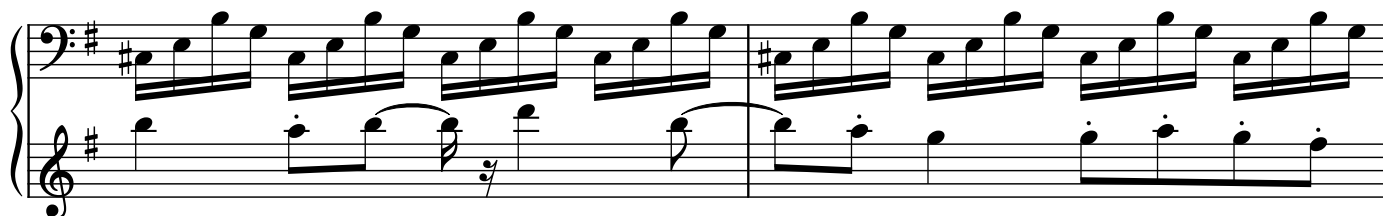
35



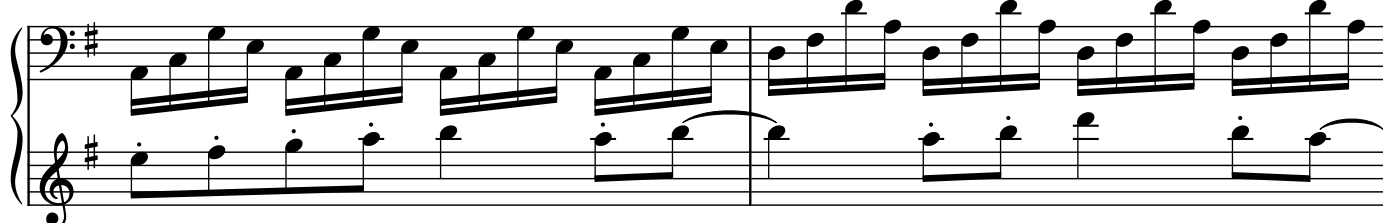
37



39



41



43

Measures 43-44 of a musical score in G major (one sharp). The bass staff features a continuous eighth-note arpeggiated pattern. The treble staff contains a series of chords, with a key signature change to F# major (two sharps) in measure 44.

45

Measures 45-46. The bass staff continues the eighth-note arpeggiated pattern. The treble staff features a melodic line with a half-note rest in measure 45, followed by a half-note in measure 46.

47

Measures 47-48. The bass staff continues the eighth-note arpeggiated pattern. The treble staff features a melodic line with a half-note rest in measure 47, followed by a half-note in measure 48.

49

Measures 49-50. The bass staff continues the eighth-note arpeggiated pattern. The treble staff features a melodic line with a half-note rest in measure 49, followed by a half-note in measure 50.

51

Measures 51-52. The bass staff continues the eighth-note arpeggiated pattern. The treble staff features a long, sustained half-note in measure 51, followed by a half-note in measure 52.

53

Measures 53-54. The bass staff continues the eighth-note arpeggiated pattern. The treble staff features a long, sustained half-note in measure 53, followed by a half-note in measure 54.

55

Measures 55 and 56. The bass clef part features a continuous eighth-note ascending scale in G major. The treble clef part has a whole note G2 in measure 55, which is tied to a whole note G2 in measure 56.

57

Measures 57 and 58. The bass clef part continues the eighth-note ascending scale. The treble clef part has a whole note G2 in measure 57, tied to a whole note G2 in measure 58, which then descends in measure 59.

59

Measures 59 and 60. The bass clef part continues the eighth-note ascending scale. The treble clef part has a whole note G2 in measure 59, tied to a whole note G2 in measure 60, which then descends in measure 61.

61

Measures 61 and 62. The bass clef part continues the eighth-note ascending scale. The treble clef part has a whole note G2 in measure 61, tied to a whole note G2 in measure 62, which then descends in measure 63.

63

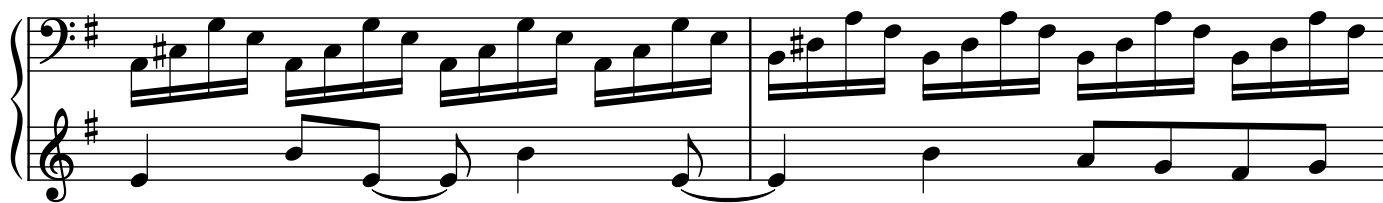
Measures 63 and 64. The bass clef part continues the eighth-note ascending scale. The treble clef part has a whole note G2 in measure 63, tied to a whole note G2 in measure 64, which then descends in measure 65.

65

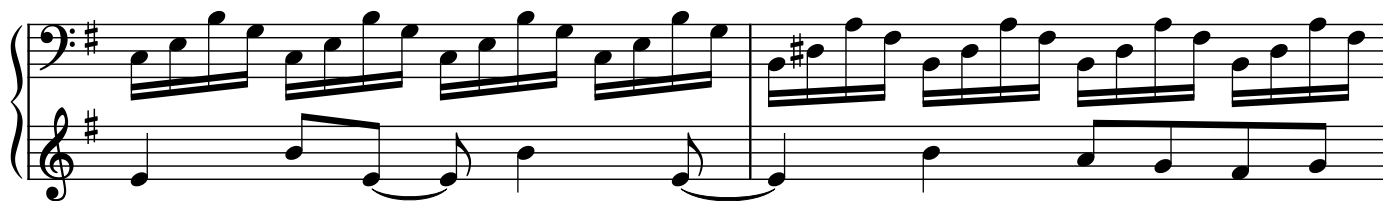
Measures 65 and 66. The bass clef part continues the eighth-note ascending scale. The treble clef part has a whole note G2 in measure 65, tied to a whole note G2 in measure 66, which then descends in measure 67.

67

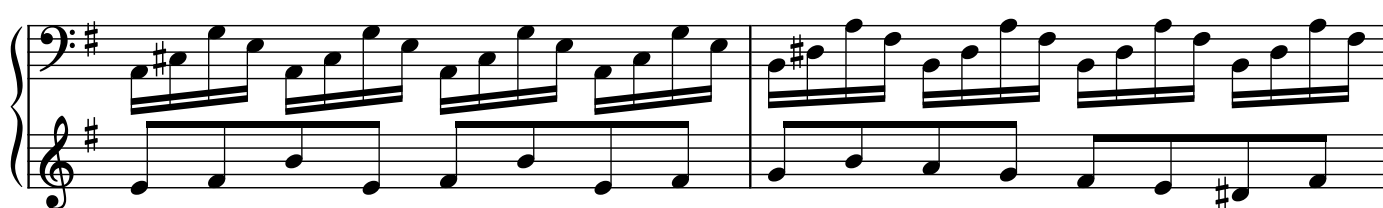
Measures 67 and 68. The bass clef part continues the eighth-note ascending scale. The treble clef part has a whole note G2 in measure 67, tied to a whole note G2 in measure 68, which then descends in measure 69.



71



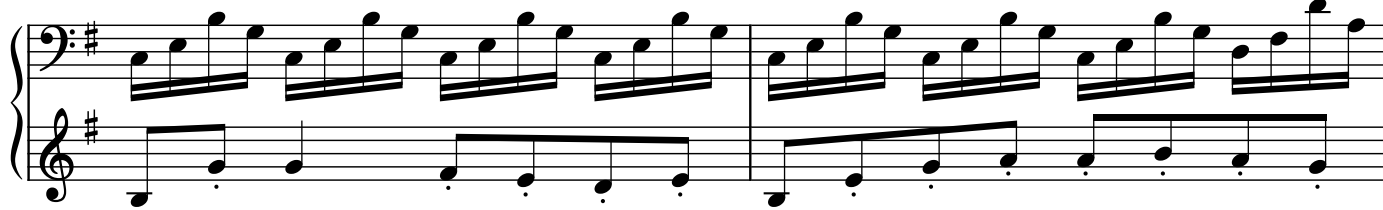
73



75



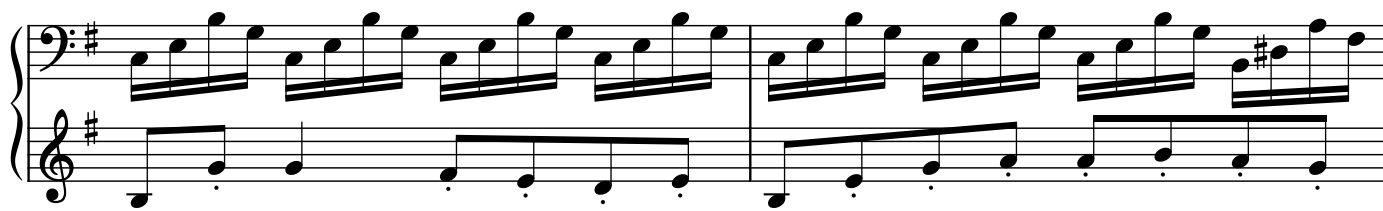
77



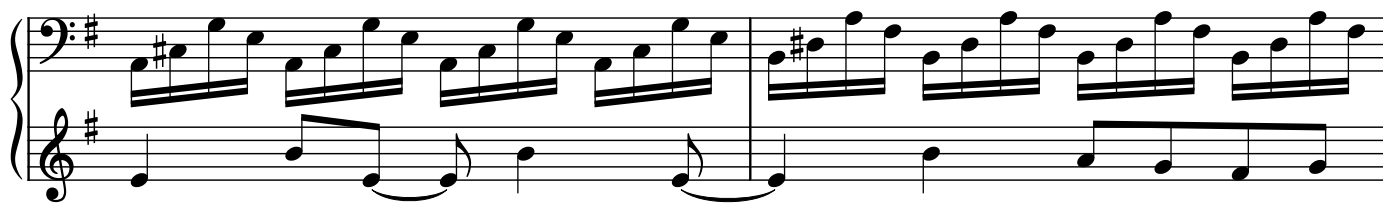
79



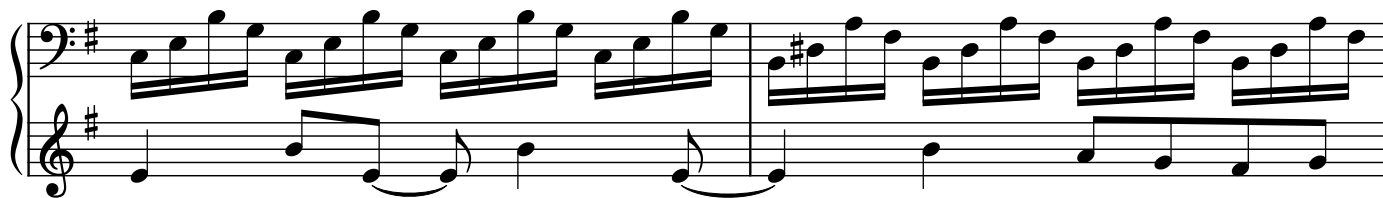
81



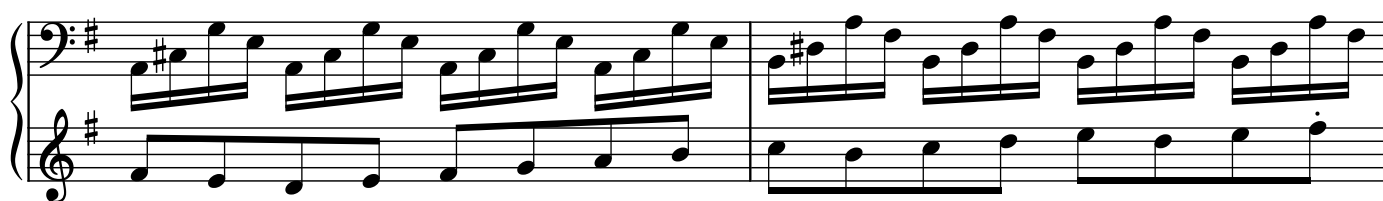
83



85



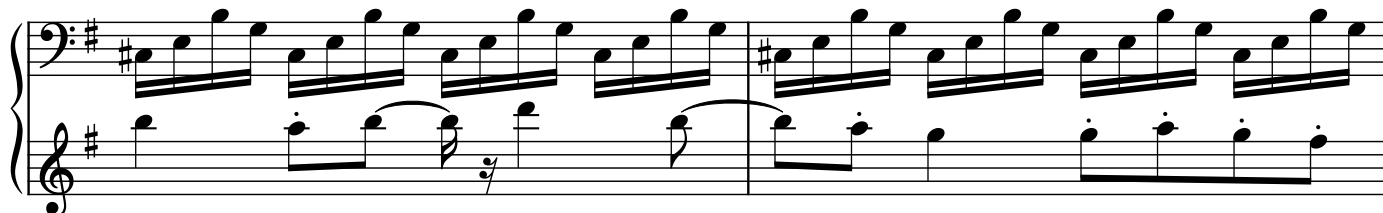
87



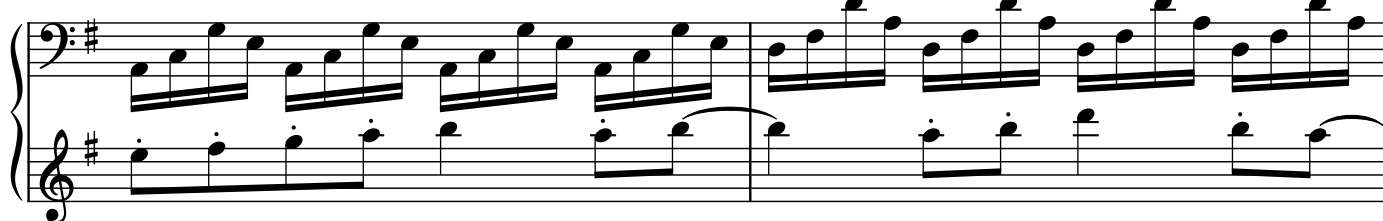
89



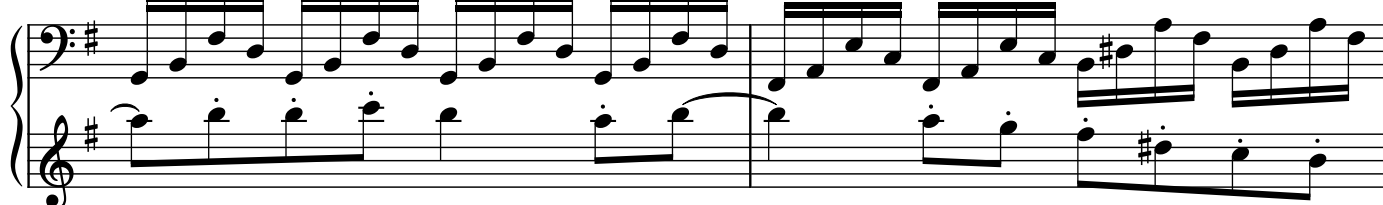
91



93



95



97

Measures 97-98 of a musical score. The key signature is one sharp (F#). The bass staff features a continuous eighth-note arpeggiated pattern. The treble staff contains a melody with dotted rhythms and rests.

99

Measures 99-100 of a musical score. The key signature is one sharp (F#). The bass staff continues the eighth-note arpeggiated pattern. The treble staff features a melody with dotted rhythms and rests.

101

Measures 101-102 of a musical score. The key signature is one sharp (F#). The bass staff continues the eighth-note arpeggiated pattern. The treble staff features a melody with dotted rhythms and rests.

103

Measures 103-104 of a musical score. The key signature is one sharp (F#). The bass staff continues the eighth-note arpeggiated pattern. The treble staff features a long, sustained note in the first measure, followed by a rest in the second measure.