

Act 2 Stage 2

Composer: Keiji Yamagishi

Game: Ninja Gaiden 2

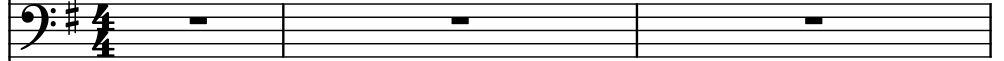
pianogame.org

♩ = 180

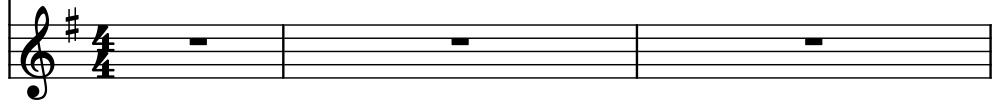
Bass Synthesizer, Melody



Contrabass, Bass



Mallet Synthesizer, Harmony

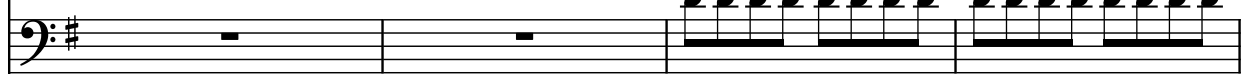


4

Synth.



Cb.



Mal. Syn.



8

Synth.



Cb.



Mal. Syn.



12

Synth.



Cb.



Mal. Syn.



15

Synth.



Cb.



Mal. Syn.



19

Synth.

Cb.

Mal. Syn.

Measures 19-21: Synth. (Bass) plays a descending eighth-note scale in G major. Cb. (Bass) plays a steady eighth-note accompaniment. Mal. Syn. (Treble) has rests.

22

Synth.

Cb.

Mal. Syn.

Measures 22-25: Synth. (Bass) plays a descending eighth-note scale in G major. Cb. (Bass) plays a steady eighth-note accompaniment. Mal. Syn. (Treble) has rests.

26

Synth.

Cb.

Mal. Syn.

Measures 26-29: Synth. (Treble) plays a descending eighth-note scale in G major. Cb. (Bass) plays a steady eighth-note accompaniment. Mal. Syn. (Treble) has rests.

30

Synth.

Cb.

Mal. Syn.

Measures 30-33: Synth. (Treble) plays a descending eighth-note scale in G major. Cb. (Bass) plays a steady eighth-note accompaniment. Mal. Syn. (Treble) has rests.

34

Synth.

Cb.

Mal. Syn.

Measures 34-37: Synth. (Treble) plays a descending eighth-note scale in G major. Cb. (Bass) plays a steady eighth-note accompaniment. Mal. Syn. (Treble) plays a descending eighth-note scale in G major.

37

Synth.

Cb.

Mal. Syn.

40

Synth.

Cb.

Mal. Syn.

44

Synth.

Cb.

Mal. Syn.

47

Synth.

Cb.

Mal. Syn.

51

Synth.

Cb.

Mal. Syn.

Measures 51-54. The Synth. part (treble clef, key of D major) plays a continuous eighth-note melody. The Cb. part (bass clef, key of D major) has rests in measures 51 and 52, followed by eighth-note patterns in measures 53 and 54. The Mal. Syn. part (treble clef, key of D major) has whole rests in all four measures.

55

Synth.

Cb.

Mal. Syn.

Measures 55-58. The Synth. part (treble clef, key of D major) continues the eighth-note melody. The Cb. part (bass clef, key of D major) plays eighth-note patterns throughout. The Mal. Syn. part (treble clef, key of D major) has whole rests in all four measures.