

# **Level 2 - Meteorite Space**

Composer: Miki Higashino

Game: Salamander (Japan)

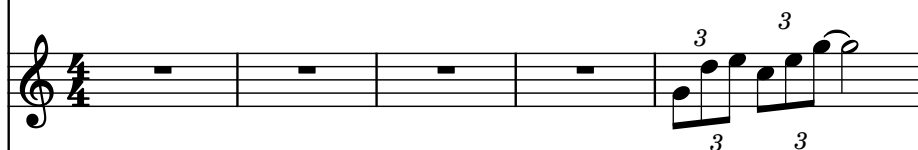
[pianogame.org](http://pianogame.org)

♩ = 150

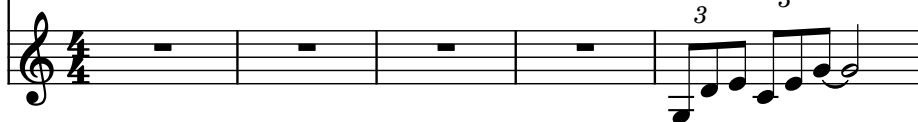
Saw Synthesizer, Sampler



Violins (section), StringInstrument

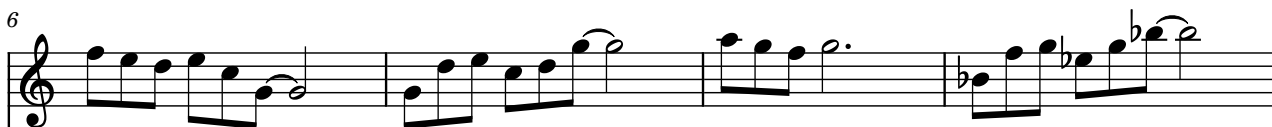


Celesta, StringInstrument

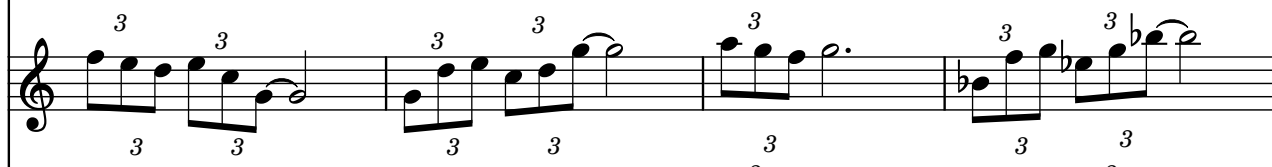


6

Synth.



Vlns.



Cel.

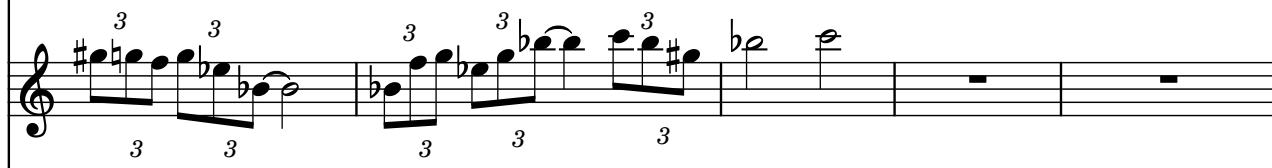


10

Synth.



Vlns.

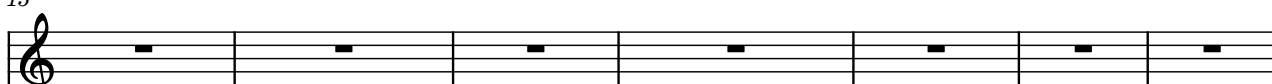


Cel.

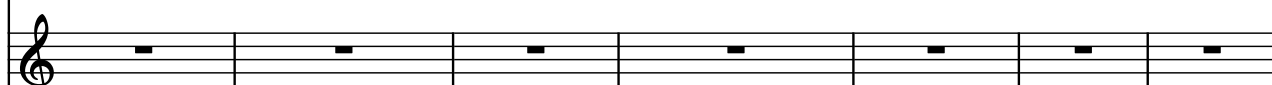


15

Synth.



Vlns.



Cel.



22

Synth.

Vlns.

Cel.

Measures 22-25: Synth and Vlns. play a melodic line with triplets. Cel. plays a rhythmic accompaniment with triplets.

26

Synth.

Vlns.

Cel.

Measures 26-29: Synth and Vlns. play a melodic line with triplets. Cel. plays a rhythmic accompaniment with triplets.

30

Synth.

Vlns.

Cel.

Measures 30-33: Synth and Vlns. are silent. Cel. plays a rhythmic accompaniment with triplets.

34

Synth.

Vlns.

Cel.

Measures 34-37: Synth and Vlns. are silent. Cel. plays a rhythmic accompaniment with triplets.

38

Synth.



Vlns.



Cel.

