

Medley on Piano

Composer: Koji Kondo

Game: Zelda Series

pianogame.org

♩ = 60

1 2 3

4

4 5 6

7

7 8 9

10

♩ = 78
♩ = 74
♩ = 72
♩ = 68
♩ = 66
♩ = 64
♩ = 60

10 11 12 13 14

15

15 16 17

17

Measures 17-18 of a musical score. The key signature has one flat (B-flat). Measure 17 features a treble clef with a half note G4 and a bass clef with a half note G2. Measure 18 features a treble clef with a half note A4 and a bass clef with a half note A2. Both measures contain a repeat sign (double bar line with dots) in the treble staff.

19

Measures 19-20 of a musical score. The key signature has one flat (B-flat). Measure 19 features a treble clef with a half note A4 and a bass clef with a half note A2. Measure 20 features a treble clef with a half note B4 and a bass clef with a half note B2. Both measures contain a repeat sign (double bar line with dots) in the treble staff.

21

Measures 21-22 of a musical score. The key signature has one flat (B-flat). Measure 21 features a treble clef with a half note C5 and a bass clef with a half note C2. Measure 22 features a treble clef with a half note D5 and a bass clef with a half note D2. Both measures contain a repeat sign (double bar line with dots) in the treble staff.

23

Measures 23-24 of a musical score. The key signature has one flat (B-flat). Measure 23 features a treble clef with a half note E5 and a bass clef with a half note E2. Measure 24 features a treble clef with a half note F5 and a bass clef with a half note F2. Both measures contain a repeat sign (double bar line with dots) in the treble staff.

25

Measures 25-26 of a musical score. The key signature has one flat (B-flat). Measure 25 features a treble clef with a half note G5 and a bass clef with a half note G2. Measure 26 features a treble clef with a half note A5 and a bass clef with a half note A2. Both measures contain a repeat sign (double bar line with dots) in the treble staff.

27

Measures 27-28 of a musical score. The key signature has one flat (B-flat). Measure 27 features a treble clef with a half note B5 and a bass clef with a half note B2. Measure 28 features a treble clef with a half note C6 and a bass clef with a half note C2. Both measures contain a repeat sign (double bar line with dots) in the treble staff.

29

Measures 29-30 of a musical score. Measure 29 features a treble staff with a melodic line starting on a whole note, followed by eighth notes, and a bass staff with a steady eighth-note accompaniment. Measure 30 continues the melodic and accompanimental patterns with some chromatic movement in the treble.

31

Measures 31-32. Measure 31 shows a continuation of the eighth-note accompaniment in the bass and a melodic line in the treble. Measure 32 features a more active treble staff with sixteenth-note passages, while the bass accompaniment remains consistent.

32

Measures 33-34. Measure 33 continues the melodic development in the treble and the accompaniment in the bass. Measure 34 shows a change in the treble staff with a new melodic phrase, while the bass accompaniment continues its rhythmic pattern.

33

Measures 35-36. Measure 35 features a complex treble staff with many beamed sixteenth notes, while the bass accompaniment continues. Measure 36 shows a more active bass staff with sixteenth-note passages, and the treble staff has a simpler melodic line.

35

Measures 37-38. Measure 37 features a treble staff with a melodic line and a bass staff with a steady eighth-note accompaniment. Measure 38 continues the melodic and accompanimental patterns with some chromatic movement in the treble.

37

Measures 39-40. Measure 39 shows a continuation of the eighth-note accompaniment in the bass and a melodic line in the treble. Measure 40 features a more active treble staff with sixteenth-note passages, while the bass accompaniment remains consistent.

39

Measure 39: Piano accompaniment with sixteenth-note patterns in both hands. Melodic line in the right hand. Measure 40: Piano accompaniment with a melodic line in the right hand.

41

Measure 41: Piano accompaniment with sixteenth-note patterns in both hands. Melodic line in the right hand. Measure 42: Piano accompaniment with a melodic line in the right hand.

43

Measure 43: Piano accompaniment with sixteenth-note patterns in both hands. Melodic line in the right hand. Measure 44: Piano accompaniment with a melodic line in the right hand.

45

Measure 45: Piano accompaniment with sixteenth-note patterns in both hands. Melodic line in the right hand. Measure 46: Piano accompaniment with a melodic line in the right hand.

47

Measure 47: Piano accompaniment with sixteenth-note patterns in both hands. Melodic line in the right hand. Measure 48: Piano accompaniment with a melodic line in the right hand. Measure 49: Piano accompaniment with a melodic line in the right hand. Measure 50: Piano accompaniment with a melodic line in the right hand.

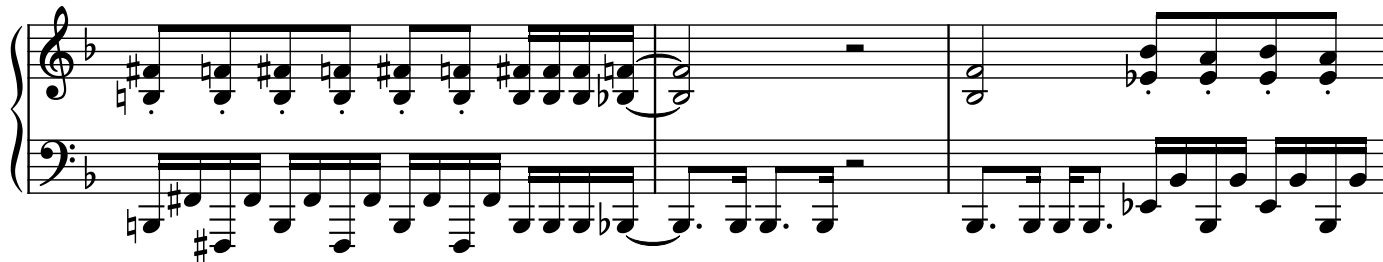
51

$\text{♩} = 79$

Measure 51: Piano accompaniment with sixteenth-note patterns in both hands. Melodic line in the right hand. Measure 52: Piano accompaniment with a melodic line in the right hand.

$\text{♩} = 12$
 $\text{♩} = 79$
 $\text{♩} = 12$

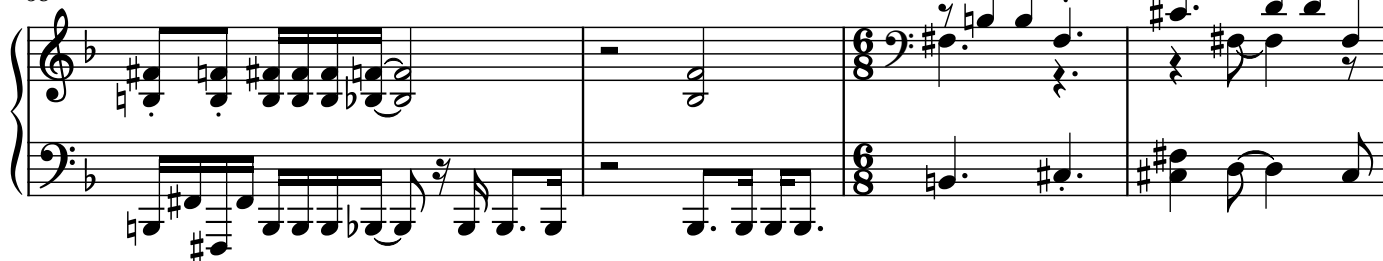
53



56



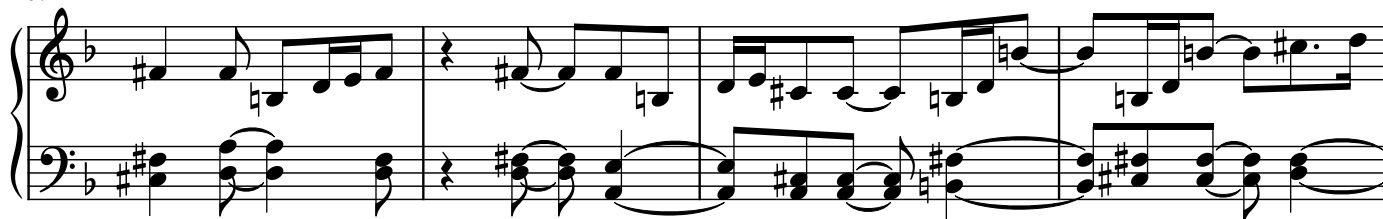
58



62



67



71



75

Measures 75-78 of a piano piece. The music is in 4/4 time with a key signature of one flat (B-flat). The right hand features a melodic line with eighth and sixteenth notes, including slurs and ties. The left hand provides a harmonic accompaniment with chords and single notes.

79

Measures 79-82 of the piano piece. The right hand continues the melodic development with various rhythmic patterns and slurs. The left hand maintains a steady accompaniment.

83

Measures 83-86 of the piano piece. The musical texture remains consistent with the previous system, featuring a melodic right hand and a supporting left hand.

87

Measures 87-90 of the piano piece, concluding the section. The right hand ends with a final melodic phrase, and the left hand provides a concluding accompaniment. A double bar line is present at the end of measure 90.

$\text{♩} = 79$
 $\text{♩} = 12$