

# Mario Raceway (4)

Composer: Kenta Nagata

Game: Mario Kart 64

[pianogame.org](http://pianogame.org)

Automobile Brake Drums, Percussion

Bass Synthesizer, Bass

Rotary Organ, Rock Organ

$\text{♩} = 135$

Measure 1: Automobile Brake Drums play a continuous eighth-note pattern. Bass Synthesizer plays a single note. Rotary Organ plays a half-note chord.

Measure 2: Automobile Brake Drums play a continuous eighth-note pattern. Bass Synthesizer plays a half-note. Rotary Organ plays a half-note.

3

Aut. Brk. Dr.

Synth.

Rot. Org.

Measure 3: Automobile Brake Drums play a continuous eighth-note pattern. Bass Synthesizer plays a half-note. Rotary Organ plays a half-note chord.

4

Aut. Brk. Dr.

Synth.

Rot. Org.

Measure 4: Automobile Brake Drums play a continuous eighth-note pattern. Bass Synthesizer plays a half-note. Rotary Organ plays a half-note chord.

5

Aut. Brk. Dr.

Synth.

Rot. Org.

Measure 5: Automobile Brake Drums play a continuous eighth-note pattern. Bass Synthesizer plays a half-note. Rotary Organ plays a half-note chord.

6

Aut. Brk. Dr.

Synth.

Rot. Org.

This system contains measures 6 and 7. The Aut. Brk. Dr. part is a single staff with a double bar line at the start of measure 6 and a repeat sign at the end of measure 7. The Synth. part is a single staff with a bass clef and a key signature of one flat. The Rot. Org. part consists of two staves, with the upper staff having a bass clef and the lower staff having a treble clef. Both staves have a key signature of one flat. The music features various note values, including eighth and sixteenth notes, and rests.

7

Aut. Brk. Dr.

Synth.

Rot. Org.

This system contains measures 7 and 8. The Aut. Brk. Dr. part is a single staff with a double bar line at the start of measure 7 and a repeat sign at the end of measure 8. The Synth. part is a single staff with a bass clef and a key signature of one flat. The Rot. Org. part consists of two staves, with the upper staff having a bass clef and the lower staff having a treble clef. Both staves have a key signature of one flat. The music features various note values, including eighth and sixteenth notes, and rests.

8

Aut. Brk. Dr.

Synth.

Rot. Org.

This system contains measures 8 and 9. The Aut. Brk. Dr. part is a single staff with a double bar line at the start of measure 8 and a repeat sign at the end of measure 9. The Synth. part is a single staff with a bass clef and a key signature of one flat. The Rot. Org. part consists of two staves, with the upper staff having a bass clef and the lower staff having a treble clef. Both staves have a key signature of one flat. The music features various note values, including eighth and sixteenth notes, and rests.

9

Aut. Brk. Dr.

Synth.

Rot. Org.

This system contains measures 9 and 10. The Aut. Brk. Dr. part is a single staff with a double bar line at the start of measure 9 and a repeat sign at the end of measure 10. The Synth. part is a single staff with a bass clef and a key signature of one flat. The Rot. Org. part consists of two staves, with the upper staff having a bass clef and the lower staff having a treble clef. Both staves have a key signature of one flat. The music features various note values, including eighth and sixteenth notes, and rests.

10

Aut. Brk. Dr.

Synth.

Rot. Org.

Measures 10-11. Aut. Brk. Dr. has a complex rhythmic pattern with eighth and sixteenth notes. Synth. and Rot. Org. have a melodic line in the bass clef and a harmonic line in the treble clef.

12

Aut. Brk. Dr.

Synth.

Rot. Org.

Measures 12-13. Aut. Brk. Dr. continues the rhythmic pattern. Synth. and Rot. Org. continue the melodic and harmonic lines.

13

Aut. Brk. Dr.

Synth.

Rot. Org.

Measures 13-14. Aut. Brk. Dr. continues the rhythmic pattern. Synth. and Rot. Org. continue the melodic and harmonic lines.

14

Aut. Brk. Dr.

Synth.

Rot. Org.

Measures 14-15. Aut. Brk. Dr. continues the rhythmic pattern. Synth. and Rot. Org. continue the melodic and harmonic lines.

15

Aut. Brk. Dr.

Synth.

Rot. Org.

16

Aut. Brk. Dr.

Synth.

Rot. Org.

17

Aut. Brk. Dr.

Synth.

Rot. Org.

18

Aut. Brk. Dr.

Synth.

Rot. Org.

19

Aut. Brk. Dr.

Synth.

Rot. Org.

19

20

Aut. Brk. Dr.

Synth.

Rot. Org.

20

21

Aut. Brk. Dr.

Synth.

Rot. Org.

21

22

Aut. Brk. Dr.

Synth.

Rot. Org.

22

23

Aut. Brk. Dr.

Synth.

Rot. Org.

Aut. Brk. Dr.

Synth.

Rot. Org.

24

Aut. Brk. Dr.

Synth.

Rot. Org.

Aut. Brk. Dr.

Synth.

Rot. Org.

25

Aut. Brk. Dr.

Synth.

Rot. Org.

Aut. Brk. Dr.

Synth.

Rot. Org.

26

Aut. Brk. Dr.

Synth.

Rot. Org.

Aut. Brk. Dr.

Synth.

Rot. Org.

27

Aut. Brk. Dr.

Synth.

Rot. Org.

Aut. Brk. Dr.

Synth.

Rot. Org.

28

Aut. Brk. Dr.

Synth.

Rot. Org.

Aut. Brk. Dr.

Synth.

Rot. Org.

29

Aut. Brk. Dr.

Synth.

Rot. Org.

Aut. Brk. Dr.

Synth.

Rot. Org.



31

Aut. Brk. Dr.

Synth.

Rot. Org.

Measures 31-32. The Aut. Brk. Dr. part features a continuous eighth-note pattern. The Synth. part has a descending eighth-note line. The Rot. Org. part consists of a piano accompaniment with chords and moving lines in both hands.

33

Aut. Brk. Dr.

Synth.

Rot. Org.

Measures 33-34. The Aut. Brk. Dr. part continues with the eighth-note pattern. The Synth. part continues with the descending eighth-note line. The Rot. Org. part continues with the piano accompaniment.

35

Aut. Brk. Dr.

Synth.

Rot. Org.

Measures 35-36. The Aut. Brk. Dr. part continues with the eighth-note pattern. The Synth. part continues with the descending eighth-note line. The Rot. Org. part continues with the piano accompaniment.

36

Aut. Brk. Dr. 

Synth. 

Rot. Org. 

38

Aut. Brk. Dr. 

Synth. 

Rot. Org. 

40

Aut. Brk. Dr. 

Synth. 

Rot. Org. 

42

Aut. Brk. Dr.

Synth.

Rot. Org.

Measures 42-43. Aut. Brk. Dr. has a continuous eighth-note pattern. Synth. and Rot. Org. have a melodic line with grace notes and a sustained bass line.

44

Aut. Brk. Dr.

Synth.

Rot. Org.

Measure 44. Aut. Brk. Dr. has a continuous eighth-note pattern. Synth. and Rot. Org. have a melodic line with a slur and a sustained bass line.

45

Aut. Brk. Dr.

Synth.

Rot. Org.

Measure 45. Aut. Brk. Dr. has a continuous eighth-note pattern. Synth. and Rot. Org. have a melodic line with a slur and a sustained bass line.

46

Aut. Brk. Dr.

Synth.

Rot. Org.

47

Aut. Brk. Dr.

Synth.

Rot. Org.

48

Aut. Brk. Dr.

Synth.

Rot. Org.

49

Aut. Brk. Dr.

Synth.

Rot. Org.

50

Aut. Brk. Dr.

Synth.

Rot. Org.

Measures 50-51. Aut. Brk. Dr. has a steady eighth-note pattern. Synth. has a descending line. Rot. Org. has a complex accompaniment with triplets and sixteenth notes.

51

Aut. Brk. Dr.

Synth.

Rot. Org.

Measures 51-52. Aut. Brk. Dr. has a steady eighth-note pattern. Synth. has a descending line. Rot. Org. has a complex accompaniment with triplets and sixteenth notes.

52

Aut. Brk. Dr.

Synth.

Rot. Org.

Measures 52-53. Aut. Brk. Dr. has a steady eighth-note pattern. Synth. has a descending line. Rot. Org. has a complex accompaniment with triplets and sixteenth notes.

54

Aut. Brk. Dr.

Synth.

Rot. Org.

Measures 54-55. Aut. Brk. Dr. has a steady eighth-note pattern. Synth. has a descending line. Rot. Org. has a complex accompaniment with triplets and sixteenth notes.

55

Aut. Brk. Dr.

Synth.

Rot. Org.

56

Aut. Brk. Dr.

Synth.

Rot. Org.

57

Aut. Brk. Dr.

Synth.

Rot. Org.

58

Aut. Brk. Dr.

Synth.

Rot. Org.

59

Aut. Brk. Dr.

Synth.

Rot. Org.

60

Aut. Brk. Dr.

Synth.

Rot. Org.

61

Aut. Brk. Dr.

Synth.

Rot. Org.

62

Aut. Brk. Dr.

Synth.

Rot. Org.

63

Aut. Brk. Dr.

Synth.

Rot. Org.

64

Aut. Brk. Dr.

Synth.

Rot. Org.

65

Aut. Brk. Dr.

Synth.

Rot. Org.

66

Aut. Brk. Dr.

Synth.

Rot. Org.



67

Aut. Brk. Dr.

Synth.

Rot. Org.

68

Aut. Brk. Dr.

Synth.

Rot. Org.

69

Aut. Brk. Dr.

Synth.

Rot. Org.

70

Aut. Brk. Dr.

Synth.

Rot. Org.

Aut. Brk. Dr. measures 70-71: A steady eighth-note pattern in a single staff.

Synth. measures 70-71: A descending eighth-note line in a single staff.

Rot. Org. measures 70-71: A piano accompaniment consisting of a bass line and a treble line with chords and single notes.

71

Aut. Brk. Dr.

Synth.

Rot. Org.

Aut. Brk. Dr. measures 71-72: A steady eighth-note pattern in a single staff.

Synth. measures 71-72: A descending eighth-note line in a single staff.

Rot. Org. measures 71-72: A piano accompaniment consisting of a bass line and a treble line with chords and single notes.

73

Aut. Brk. Dr.

Synth.

Rot. Org.

Aut. Brk. Dr. measures 73-74: A steady eighth-note pattern in a single staff.

Synth. measures 73-74: A descending eighth-note line in a single staff.

Rot. Org. measures 73-74: A piano accompaniment consisting of a bass line and a treble line with chords and single notes.

75

Aut. Brk. Dr.

Synth.

Rot. Org.

Measures 75-76. Aut. Brk. Dr. has a continuous eighth-note pattern. Synth. and Rot. Org. have a melodic line with grace notes and a bass line with sustained notes.

77

Aut. Brk. Dr.

Synth.

Rot. Org.

Measures 77-78. Aut. Brk. Dr. has a continuous eighth-note pattern. Synth. and Rot. Org. have a melodic line with grace notes and a bass line with sustained notes.

78

Aut. Brk. Dr.

Synth.

Rot. Org.

Measures 79-80. Aut. Brk. Dr. has a continuous eighth-note pattern. Synth. and Rot. Org. have a melodic line with grace notes and a bass line with sustained notes.

80

Aut. Brk. Dr.

Synth.

Rot. Org.

Aut. Brk. Dr. Synth. Rot. Org.

82

Aut. Brk. Dr.

Synth.

Rot. Org.

Aut. Brk. Dr. Synth. Rot. Org.

84

Aut. Brk. Dr.

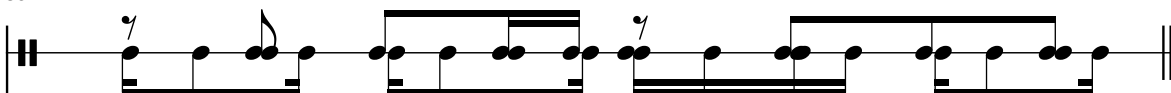
Synth.

Rot. Org.

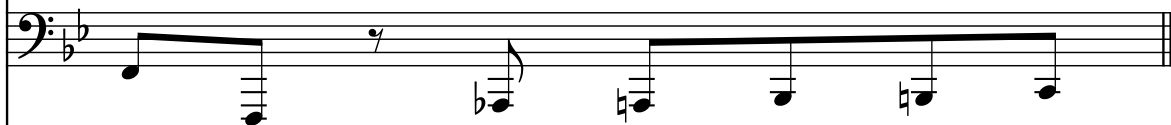
Aut. Brk. Dr. Synth. Rot. Org.

85

Aut. Brk. Dr.



Synth.



Rot. Org.

