

Liberi Fatali (7)

Composer: Nobuo Uematsu

Game: Final Fantasy 8

pianogame.org

♩ = 150

Contrabasses (section), Track 1

Treble Viol, Track 2

Viola, Track 4

5

Cbs.

Tr. VI.

Vla.

9

Cbs.

Tr. VI.

Vla.

12

Cbs.

Tr. VI.

Vla.

15

Cbs.

Tr. VI.

Vla.

Measures 15-17. Cbs. (Cello) plays a steady eighth-note pattern. Tr. VI. (Trumpet VI) has a long sustained note. Vla. (Violoncello) has a triplet of eighth notes.

18

Cbs.

Tr. VI.

Vla.

Measures 18-20. Cbs. continues the eighth-note pattern. Tr. VI. has a long sustained note. Vla. has a triplet of eighth notes.

21

Cbs.

Tr. VI.

Vla.

Measures 21-23. Cbs. continues the eighth-note pattern. Tr. VI. has a triplet of eighth notes. Vla. has a triplet of eighth notes.

23

Cbs.

Tr. VI.

Vla.

Measures 24-26. Cbs. continues the eighth-note pattern. Tr. VI. has a triplet of eighth notes. Vla. has a triplet of eighth notes.

26

Cbs.

Tr. VI.

Vla.

Measures 26-28. Cbs. (Cello) plays a bass line with eighth notes and a triplet of eighth notes. Tr. VI. (Trumpet VI) plays a complex texture with many beamed notes and some rests. Vla. (Viola) plays a bass line with eighth notes and a half note.

29

Cbs.

Tr. VI.

Vla.

Measures 29-31. Cbs. (Cello) plays a triplet of eighth notes. Tr. VI. (Trumpet VI) plays a complex texture with many beamed notes and some rests. Vla. (Viola) plays a bass line with eighth notes and a half note.

32

Cbs.

Tr. VI.

Vla.

Measures 32-35. Cbs. (Cello) plays a triplet of eighth notes. Tr. VI. (Trumpet VI) plays a complex texture with many beamed notes and some rests. Vla. (Viola) plays a bass line with eighth notes and a half note.

36

Cbs.

Tr. VI.

Vla.

Measures 36-39. Cbs. (Cello) plays a bass line with eighth notes and a half note. Tr. VI. (Trumpet VI) plays a complex texture with many beamed notes and some rests. Vla. (Viola) plays a bass line with eighth notes and a half note.

41

Cbs.

Tr. VI.

Vla.

Measures 41-48. Cbs. (Cello) has a melodic line with various accidentals. Tr. VI. (Trumpet VI) has a sustained note with a slur. Vla. (Viola) has a melodic line with various accidentals.

49

Cbs.

Tr. VI.

Vla.

Measures 49-51. Cbs. (Cello) has a melodic line with various accidentals. Tr. VI. (Trumpet VI) has a sustained note with a slur. Vla. (Viola) has a melodic line with various accidentals.

52

Cbs.

Tr. VI.

Vla.

Measures 52-54. Cbs. (Cello) has a melodic line with various accidentals. Tr. VI. (Trumpet VI) has a sustained note with a slur. Vla. (Viola) has a melodic line with various accidentals.

55

Cbs.

Tr. VI.

Vla.

Measures 55-58. Cbs. (Cello) has a melodic line with various accidentals. Tr. VI. (Trumpet VI) has a sustained note with a slur. Vla. (Viola) has a melodic line with various accidentals.

[illegible]

61

Cbs.

Tr. VI.

Vla.

63

Cbs.

Tr. VI.

Vla.

65

Cbs.

Tr. VI.

Vla.

3 3 3 3 3 3 3 3

67

Cbs.

Tr. VI.

Vla.

3 3 3 3

71

Cbs.

Tr. VI.

Vla.

3 3 3 3

74

Cbs.

Tr. VI.

Vla.

3 3 3 3

77

Cbs.

Tr. VI.

Vla.

Measures 77-79. Cbs. (Cello) plays a continuous eighth-note pattern. Tr. VI. (Trumpet VI) has a long rest with a slur. Vla. (Viola) has a long rest with a slur, and a few notes appear in measure 79.

80

Cbs.

Tr. VI.

Vla.

Measures 80-81. Cbs. (Cello) continues the eighth-note pattern. Tr. VI. (Trumpet VI) has a long rest with a slur. Vla. (Viola) plays a complex eighth-note pattern with many accidentals.

82

Cbs.

Tr. VI.

Vla.

Measures 82-83. Cbs. (Cello) continues the eighth-note pattern. Tr. VI. (Trumpet VI) has a long rest with a slur. Vla. (Viola) plays a complex eighth-note pattern with many accidentals.

84

Cbs.

Tr. VI.

Vla.

Measures 84-85. Cbs. (Cello) continues the eighth-note pattern. Tr. VI. (Trumpet VI) has a long rest with a slur. Vla. (Viola) plays a complex eighth-note pattern with many accidentals.

86

Cbs.

Tr. VI.

Vla.

89

Cbs.

Tr. VI.

Vla.

91

Cbs.

Tr. VI.

Vla.

94

Cbs.

Tr. VI.

Vla.

98

Cbs.

Tr. VI.

Vla.

3

100

Cbs.

Tr. VI.

Vla.

3

102

Cbs.

Tr. VI.

Vla.

5

3

104

Cbs.

7

Tr. VI.

Vla.

5

106

Cbs.

Tr. VI.

Vla.

109

Cbs.

Tr. VI.

Vla.

119

Cbs.

Tr. VI.

Vla.

130

Cbs.

Tr. VI.

Vla.

This system contains measures 130 through 137. The Cbs. (Cello) part consists of a single line of rests. The Tr. VI. (Trumpet VI) part features a series of rapid, repeated eighth-note chords. The Vla. (Viola) part is a single line of rests.

138

Cbs.

Tr. VI.

Vla.

This system contains measures 138 through 143. The Cbs. (Cello) part consists of a single line of rests. The Tr. VI. (Trumpet VI) part features a series of rapid, repeated eighth-note chords, with some notes marked with a 'z' symbol. The Vla. (Viola) part is a single line of rests.

144

Cbs.

Tr. VI.

Vla.

This system contains measures 144 through 154. The Cbs. (Cello) part consists of a single line of rests. The Tr. VI. (Trumpet VI) part features a series of rapid, repeated eighth-note chords. The Vla. (Viola) part is a single line of rests.

155

Cbs.

Tr. VI.

Vla.

This system contains measures 155 through 164. The Cbs. (Cello) part consists of a single line of rests. The Tr. VI. (Trumpet VI) part features a series of rapid, repeated eighth-note chords. The Vla. (Viola) part is a single line of rests.

165

Cbs.

Tr. VI.

Vla.

Measures 165-173: Cbs. (rests), Tr. VI. (melodic line with eighth notes and slurs), Vla. (rests).

174

Cbs.

Tr. VI.

Vla.

Measures 174-180: Cbs. (rests), Tr. VI. (melodic line with eighth notes and slurs, bass line with eighth notes and slurs), Vla. (rests).

181

Cbs.

Tr. VI.

Vla.

Measures 181-191: Cbs. (rests), Tr. VI. (melodic line with eighth notes and slurs), Vla. (rests).

192

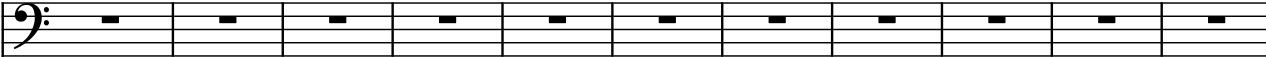
Cbs.

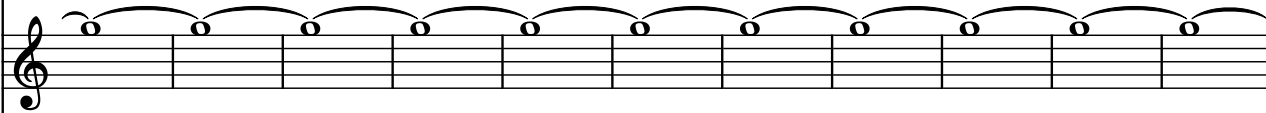
Tr. VI.

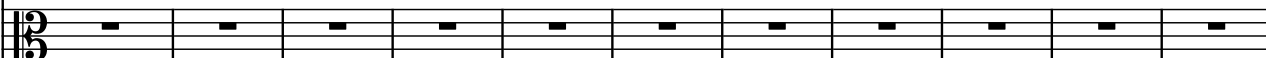
Vla.

Measures 192-202: Cbs. (rests), Tr. VI. (melodic line with eighth notes and slurs), Vla. (rests).

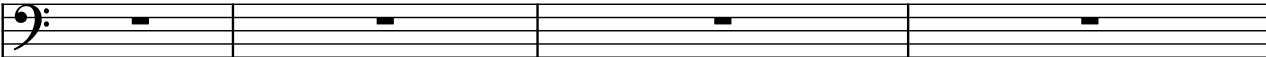
203


Cbs. 

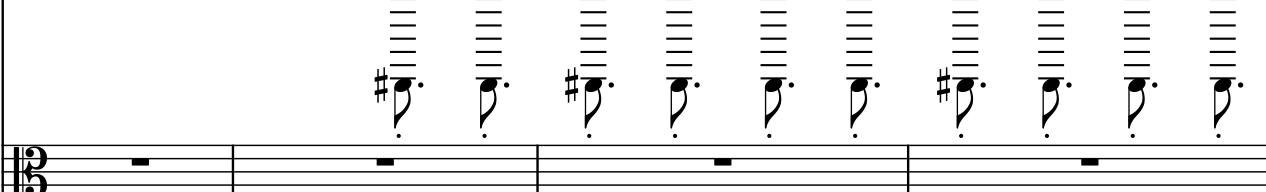
Tr. VI. 

Vla. 

214

Cbs. 

Tr. VI. 

Vla. 


218

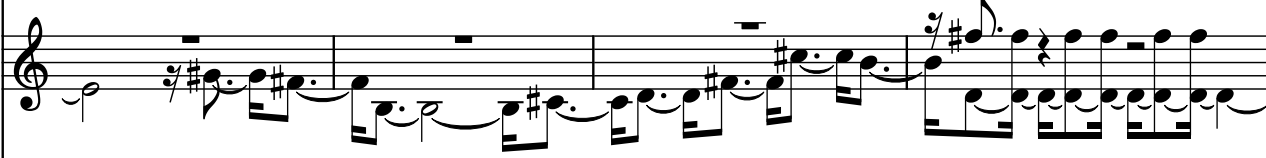
Cbs. 


Tr. VI. 

Vla. 

222

Cbs. 

Tr. VI. 

Vla. 

226

Cbs.

Tr. VI.

Vla.

Measures 226-228. Cbs. is a single bass line. Tr. VI. has a complex melodic line with many sharps and slurs. Vla. is a single bass line.

229

Cbs.

Tr. VI.

Vla.

Measures 229-230. Cbs. is a single bass line. Tr. VI. has a complex melodic line with many sharps and slurs. Vla. is a single bass line.

231

Cbs.

Tr. VI.

Vla.

Measures 231-232. Cbs. is a single bass line. Tr. VI. has a complex melodic line with many sharps and slurs. Vla. is a single bass line with triplets.

233

Cbs.

Tr. VI.

Vla.

Measures 233-238. Cbs. is a single bass line. Tr. VI. has a complex melodic line with many sharps and slurs. Vla. is a single bass line with triplets.

239

Cbs.

Tr. VI.

Vla.

8

8

248

Cbs.

Tr. VI.

Vla.

256

Cbs.

Tr. VI.

Vla.

3

3

3

3

257

Cbs.

Tr. VI.

Vla.

3

3

3

3

258

Cbs.

Tr. VI.

Vla.

Measures 258-260. Cbs. (Cello) has whole rests. Tr. VI. (Trumpet VI) has eighth-note triplets in measures 258-260, followed by quarter notes in measure 261. Vla. (Viola) has whole rests.

261

Cbs.

Tr. VI.

Vla.

Measures 261-262. Cbs. (Cello) has whole rests. Tr. VI. (Trumpet VI) has a melodic line with slurs and ties in measures 261-262. Vla. (Viola) has whole rests.

263

Cbs.

Tr. VI.

Vla.

Measures 263-264. Cbs. (Cello) has whole rests. Tr. VI. (Trumpet VI) has a complex melodic line with slurs, ties, and a triplet in measure 263, followed by a half note in measure 264. Vla. (Viola) has whole rests.

265

Cbs.

Tr. VI.

Vla.

Measures 265-270. Cbs. (Cello) has whole rests. Tr. VI. (Trumpet VI) has a melodic line with slurs and ties in measures 265-270. Vla. (Viola) has whole rests.

276

Cbs.

Tr. VI.

Vla.

Measures 276-282: Cbs. (bass clef) has whole rests. Tr. VI. (treble clef) has a melodic line with slurs and ties. Vla. (bass clef) has whole rests.

283

Cbs.

Tr. VI.

Vla.

Measures 283-284: Cbs. (bass clef) has a whole rest. Tr. VI. (treble clef) has a melodic line with slurs, ties, and a triplet. Vla. (bass clef) has a whole rest.

284

Cbs.

Tr. VI.

Vla.

Measures 285-290: Cbs. (bass clef) has a whole rest. Tr. VI. (treble clef) has a melodic line with slurs, ties, and a triplet. Vla. (bass clef) has a whole rest.

285

Cbs.

Tr. VI.

Vla.

Measures 291-296: Cbs. (bass clef) has a whole rest. Tr. VI. (treble clef) has a melodic line with slurs, ties, and a triplet. Vla. (bass clef) has a whole rest.

286

Cbs.

Tr. VI.

Vla.

Measures 286-288. The Cbs. part has whole rests. The Tr. VI. part has a melodic line with triplets and slurs. The Vla. part has whole rests.

289

Cbs.

Tr. VI.

Vla.

Measures 289-298. The Cbs. part has whole rests. The Tr. VI. part has a melodic line with slurs and ties. The Vla. part has whole rests.

300

Cbs.

Tr. VI.

Vla.

Measures 300-305. The Cbs. part has whole rests. The Tr. VI. part has a melodic line with slurs and ties. The Vla. part has whole rests.

306

Cbs.

Tr. Vl.

Vla.

7

3

312

Cbs.

Tr. Vl.

Vla.

5

5

5

315

Cbs.

Tr. Vl.

Vla.

7

7

318

Cbs.

Tr. VI.

Vla.

Measures 318-323: Cbs. (bass clef) has rests. Tr. VI. (treble clef) has a complex melodic line with many beamed sixteenth and thirty-second notes, and some slurs. Vla. (bass clef) has rests.

324

Cbs.

Tr. VI.

Vla.

Measures 324-330: Cbs. (bass clef) has rests. Tr. VI. (treble clef) has a melodic line with slurs and some grace notes. Vla. (bass clef) has rests.

331

Cbs.

Tr. VI.

Vla.

Measures 331-332: Cbs. (bass clef) has rests. Tr. VI. (treble clef) has a complex melodic line with many beamed sixteenth and thirty-second notes, and some slurs. Vla. (bass clef) has rests.

333

Cbs.

Tr. VI.

Vla.

Measures 333-338: Cbs. (bass clef) has rests. Tr. VI. (treble clef) has a melodic line with slurs and some grace notes. Vla. (bass clef) has rests.

339

Cbs.

Tr. VI.

Vla.

Measures 339-344. The Cbs. part is a single line with rests. The Tr. VI. part features a melodic line with eighth notes and a final triplet. The Vla. part is a single line with rests.

345

Cbs.

Tr. VI.

Vla.

Measures 345-350. The Cbs. part is a single line with rests. The Tr. VI. part features a complex melodic line with many beamed notes and accidentals. The Vla. part is a single line with rests.

347

Cbs.

Tr. VI.

Vla.

Measures 347-350. The Cbs. part is a single line with rests. The Tr. VI. part features a melodic line with eighth notes and a final half note. The Vla. part is a single line with rests.

350

Cbs.

Tr. VI.

Vla.

Measures 350-353. The Cbs. part is a single line with rests. The Tr. VI. part features a complex melodic line with many beamed notes and accidentals. The Vla. part is a single line with rests.

353

Cbs.

Tr. VI.

Vla.

Measures 353-357. Cbs. (Cello) has whole rests. Tr. VI. (Trumpet VI) has a melodic line starting with a half note G4, followed by eighth notes, and ending with a half note G4. Vla. (Viola) has whole rests.

358

Cbs.

Tr. VI.

Vla.

Measures 358-360. Cbs. (Cello) has whole rests. Tr. VI. (Trumpet VI) has a melodic line starting with a half note G4, followed by eighth notes, and ending with a half note G4. Vla. (Viola) has whole rests.

361

Cbs.

Tr. VI.

Vla.

Measures 361-365. Cbs. (Cello) has whole rests. Tr. VI. (Trumpet VI) has a melodic line starting with a half note G4, followed by eighth notes, and ending with a half note G4. Vla. (Viola) has whole rests.

363

Cbs.

Tr. VI.

Vla.

5

5

364

Cbs.

Tr. VI.

Vla.

5

5

365

Cbs.

Tr. VI.

Vla.

3

3

370

Cbs.

Tr. VI.

Vla.

3 3

372

Cbs.

Tr. VI.

Vla.

7 3

374

Cbs.

Tr. VI.

Vla.

9

379

Cbs.

Tr. VI.

Vla.

7

3

3

383

Cbs.

Tr. VI.

Vla.

3

3

3

386

Cbs.

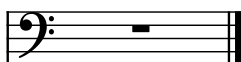
Tr. VI.

Vla.

5

394

Cbs.



Tr. Vl.



Vla.

