

# Port Level (GS)

Composer: Jon Holland

Game: Vectorman

[pianogame.org](http://pianogame.org)

♩ = 141

Saw Synthesizer, Saw Wave

Clavichord, Clavinet

4

Synth.

Cch.

7

Synth.

Cch.

9

Synth.

Cch.

Measures 1-3 of the first system. The Saw Synthesizer plays a sustained octave chord (C2-C3) in the bass. The Clavichord/Clavinet plays a rhythmic pattern of eighth notes in the right hand and a syncopated eighth-note pattern in the left hand.

Measures 4-6 of the first system. The Synth plays a sustained octave chord (C2-C3) in the bass. The Cch. continues the rhythmic pattern from the previous system.

Measures 7-9 of the first system. The Synth is silent. The Cch. continues the rhythmic pattern, with the left hand using a treble clef for the final measure.

Measures 10-12 of the first system. The Synth is silent. The Cch. continues the rhythmic pattern, with the right hand using a treble clef for the final measure.

11

Synth.

Cch.

13

Synth.

Cch.

15

Synth.

Cch.

17

Synth.

Cch.

19

Synth.

Cch.

21

Synth.

Cch.

23

Synth.

Cch.

25

Synth.

Cch.

29

Synth.

Cch.

33

Synth.

Cch.

35

Synth.

Cch.

37

Synth.

Cch.

41

Synth.

Cch.

43

Synth.

Cch.

Measures 43-45. The Synth part is in the bass clef with a key signature of three flats and contains whole rests. The Cch. part consists of two staves: the upper staff is in the bass clef and the lower staff is in the bass clef. Both contain eighth-note patterns with accents. The lower staff has a treble clef change in the third measure.

46

Synth.

Cch.

Measures 46-47. The Synth part is in the bass clef with a key signature of three flats and contains whole rests. The Cch. part consists of two staves: the upper staff is in the bass clef and the lower staff is in the bass clef. Both contain eighth-note patterns with accents. The upper staff has a treble clef change in the second measure.

48

Synth.

Cch.

Measures 48-49. The Synth part is in the bass clef with a key signature of three flats and contains whole rests. The Cch. part consists of two staves: the upper staff is in the treble clef and the lower staff is in the bass clef. Both contain eighth-note patterns with accents. The upper staff has a treble clef change in the first measure.

50

Synth.

Cch.

Measures 50-51. The Synth part is in the bass clef with a key signature of three flats and contains whole rests. The Cch. part consists of two staves: the upper staff is in the bass clef and the lower staff is in the bass clef. Both contain eighth-note patterns with accents. The upper staff has a treble clef change in the second measure.

52

Synth.

Cch.

54

Synth.

Cch.

56

Synth.

Cch.

58

Synth.

Cch.

60

Synth.

Cch.

62

Synth.

Cch.

64

Synth.

Cch.

69

Synth.

Cch.

71

Synth.

Cch.

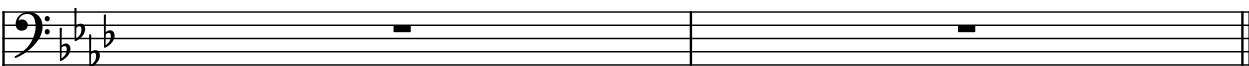
73

Synth.

Cch.

75

Synth.



Cch.

