

# Diary Mode

Composer: Hideki Sakamoto

Game: Kyoraku Sanyo Toyomaru Okumura Daiichi Maruhon Par

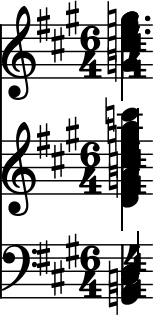
[pianogame.org](http://pianogame.org)

Saw Synthesizer, Super Nintendo Entertainment System

Grand Piano, Game: "Kyoraku Sanyo Toyomaru Okumura Daiichi Maruhon Parlor Parlor! 4 CR" (Japan)

Bass Guitar, Track: "Diary Mode"

♩ = 15



2

Synth.

Pno.

B. Guit.

5

Synth.

Pno.

B. Guit.

8

Synth.

Pno.

B. Guit.

11

Synth.

Pno.

B. Guit.

Musical score for three instruments: Synth., Pno., and B. Guit. across four systems. The score is in 6/4 time and D major. The Synth. part is in the treble clef, the Pno. part is in the treble clef, and the B. Guit. part is in the bass clef. The score shows measures 2 through 11. The Synth. part features a melody with chords and single notes. The Pno. part is mostly silent, with some chords in measures 5 and 8. The B. Guit. part features a steady eighth-note bass line.

14

Synth.

Pno.

B. Guit.

Measures 14-16: Synth plays a sequence of chords and arpeggios in the treble clef. Pno is silent. B. Guit plays a bass line in the bass clef.

17

Synth.

Pno.

B. Guit.

Measures 17-19: Synth plays a sequence of chords and arpeggios in the treble clef. Pno is silent. B. Guit plays a bass line in the bass clef.

20

Synth.

Pno.

B. Guit.

Measures 20-22: Synth plays a sequence of chords and arpeggios in the treble clef. Pno is silent. B. Guit plays a bass line in the bass clef.

23

Synth.

Pno.

B. Guit.

Measures 23-25: Synth plays a sequence of chords and arpeggios in the treble clef. Pno is silent. B. Guit plays a bass line in the bass clef.

26

Synth.

Pno.

B. Guit.

Measures 26-28: Synth plays a sequence of chords and arpeggios in the treble clef. Pno is silent. B. Guit plays a bass line in the bass clef.

29

Synth.

Pno.

B. Guit.

Measures 29-31. The Synth. part features a series of chords and single notes in the treble clef. The Pno. part is silent. The B. Guit. part features a rhythmic pattern of eighth and sixteenth notes in the bass clef.

32

Synth.

Pno.

B. Guit.

Measures 32-34. The Synth. part features a series of chords and single notes in the treble clef. The Pno. part is silent. The B. Guit. part features a rhythmic pattern of eighth and sixteenth notes in the bass clef.