

# **The Instinct (4)**

Composer: Mick Gordon

Game: Killer Instinct

[pianogame.org](http://pianogame.org)

Handwritten musical score for a single melodic line, likely for a piano or organ. The score is written on 11 staves, each beginning with a double bar line and a repeat sign. The time signature is 4/4, indicated by the '4' over the '4' in the first staff. The key signature is one sharp (F#), indicated by the sharp sign on the F line of the first staff.

The score includes several tempo markings in beats per minute (BPM):

- Staff 1:  $\text{♩} = 115$
- Staff 2:  $\text{♩} = 110$ ,  $\text{♩} = 114$ ,  $\text{♩} = 116$
- Staff 3:  $\text{♩} = 116$ ,  $\text{♩} = 114$ ,  $\text{♩} = 113$ ,  $\text{♩} = 112$ ,  $\text{♩} = 110$ ,  $\text{♩} = 109$ ,  $\text{♩} = 108$
- Staff 5:  $\text{♩} = 115$

The notation includes various rhythmic values: quarter notes, eighth notes, sixteenth notes, and sixteenth rests. There are also dynamic markings such as  $\text{f}$  (forte) and  $\text{p}$  (piano), and articulation marks like accents and slurs. The score is divided into measures by vertical bar lines, with some measures containing repeat signs. The staves are numbered 10, 17, 22, 25, 32, 38, 41, 44, 47, 50, and 56, indicating the starting measure for each staff.

2

62



65



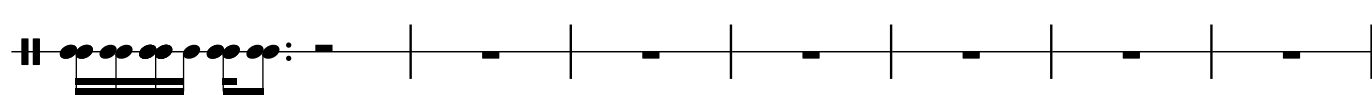
68



70



72



79



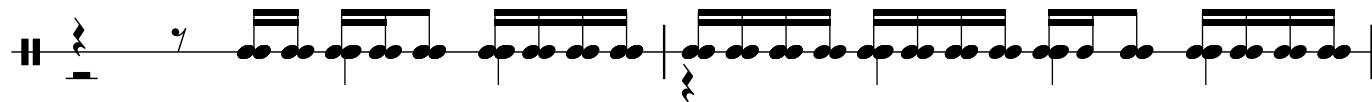
84



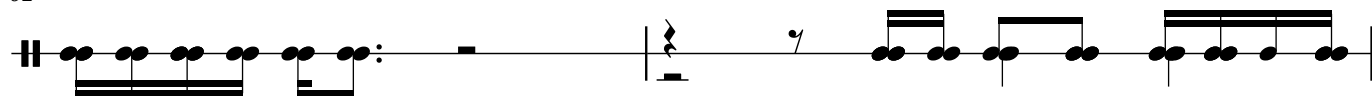
88



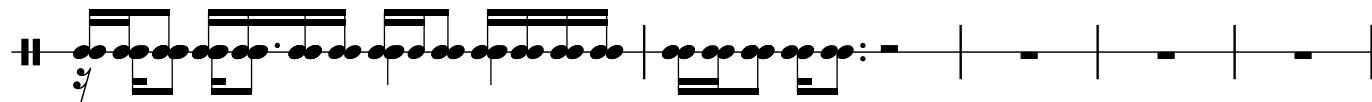
90



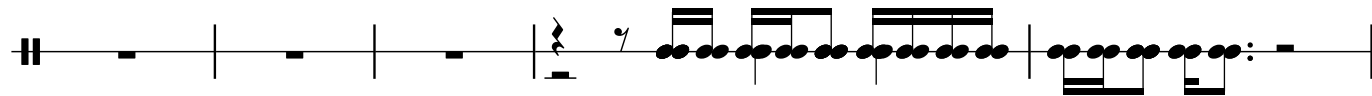
92



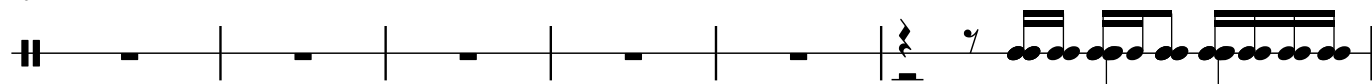
94

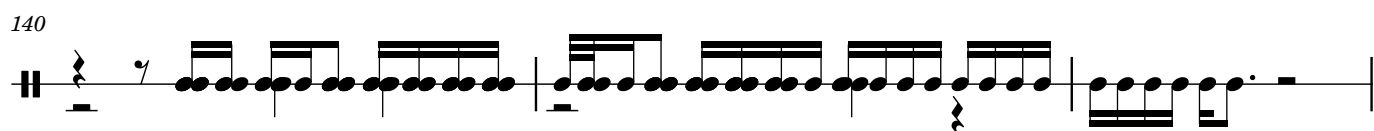
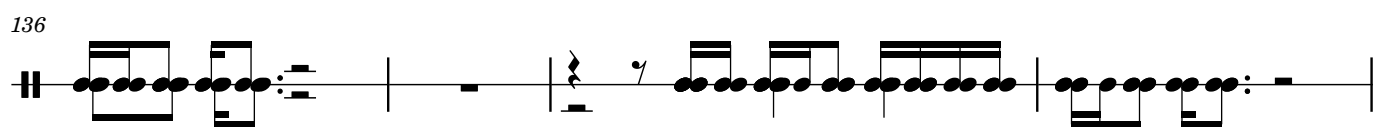
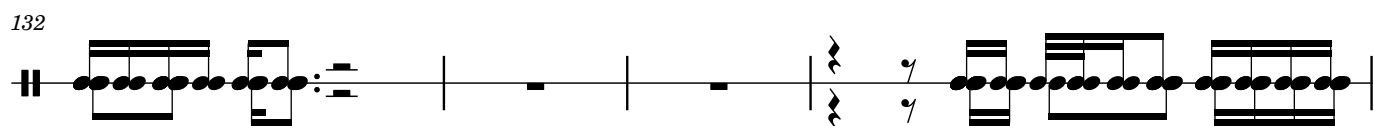
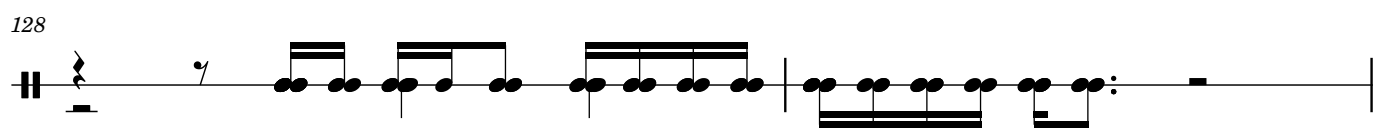
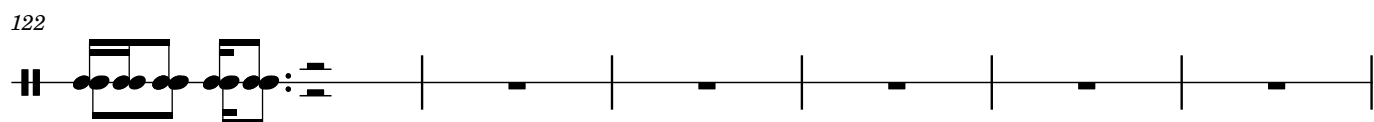
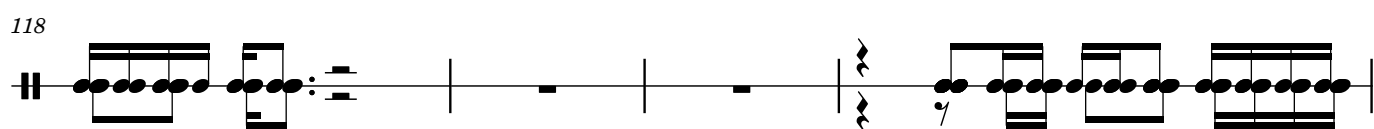
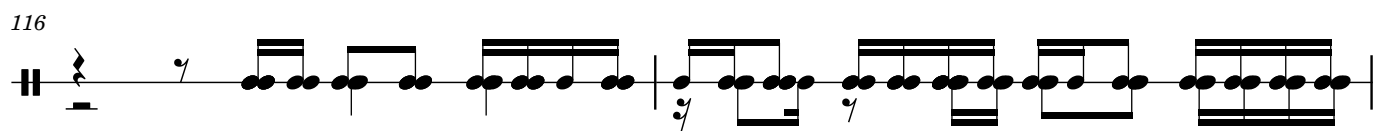
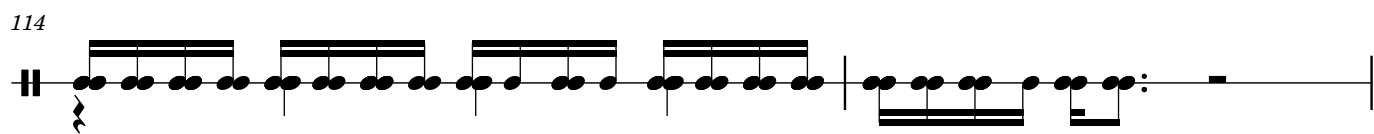
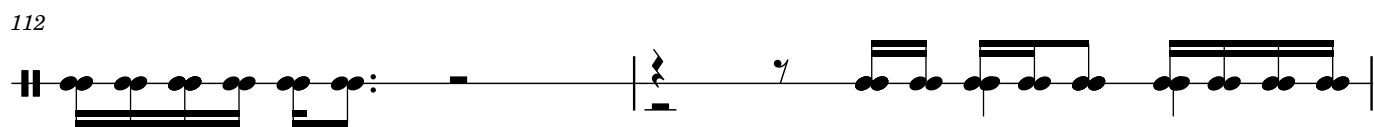
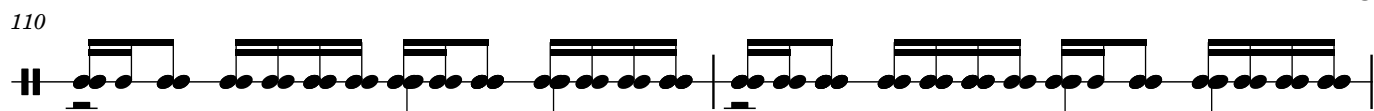


99



104





4  
167



179



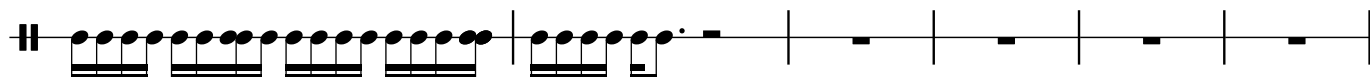
191



199



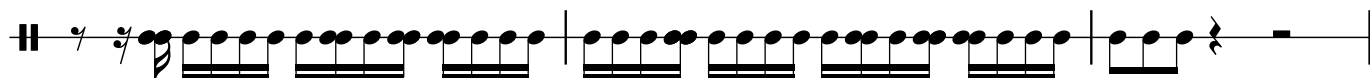
201



207



218



221



233



236



3

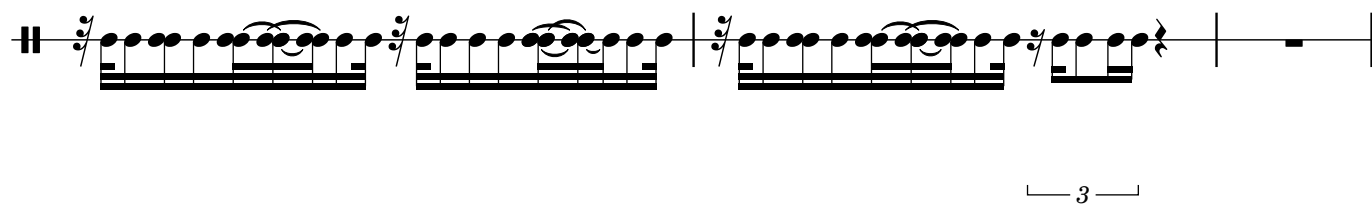
242



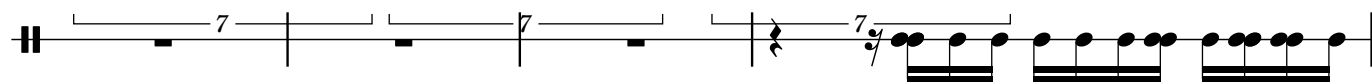
3

7

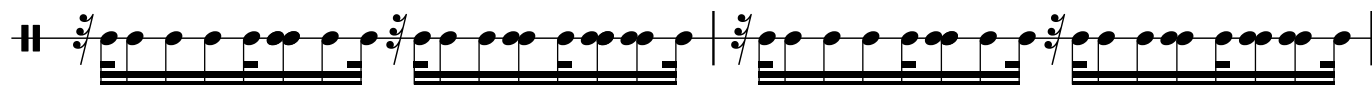
245



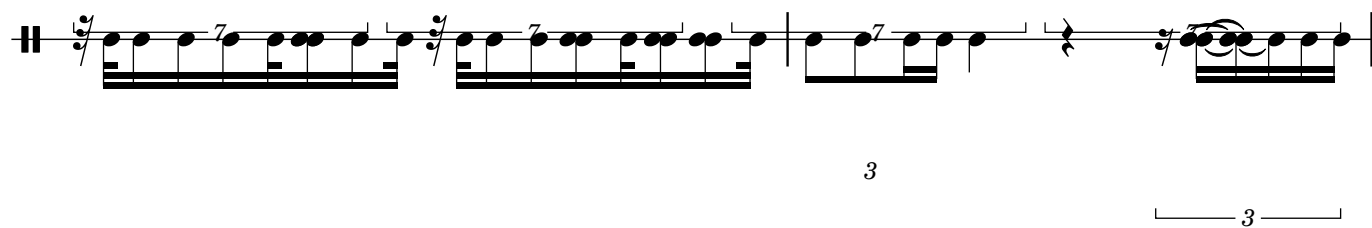
248



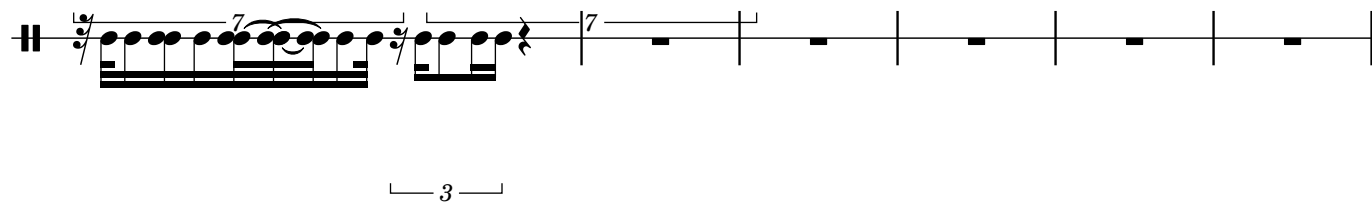
252



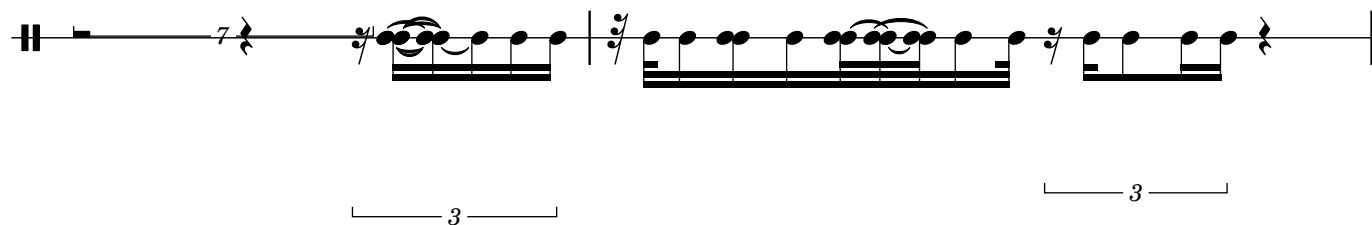
254



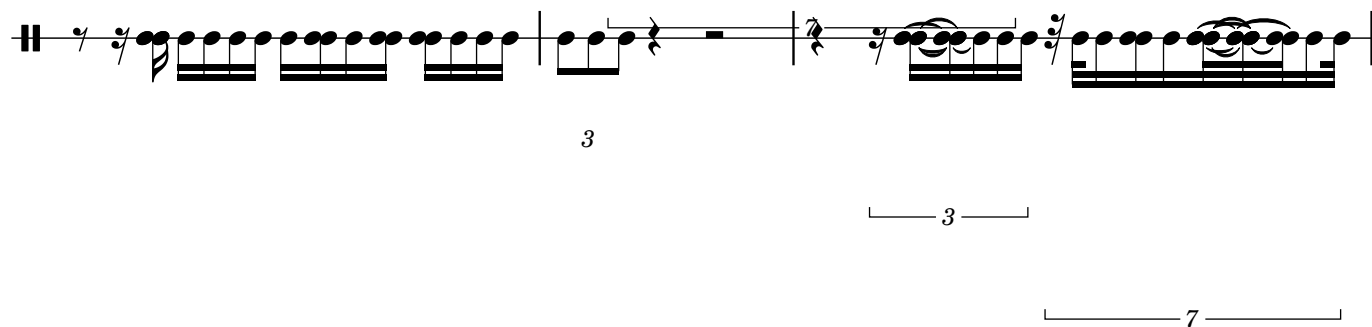
256



262



264



267

269

3

7

5 7

275


275

281

286

Example 10

288



Example 10-10

290

3 7 3 7

292

294

300

306

309

311

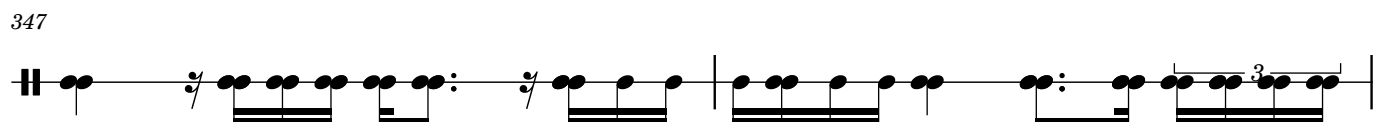
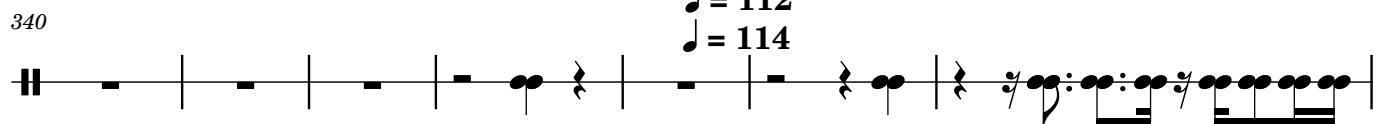
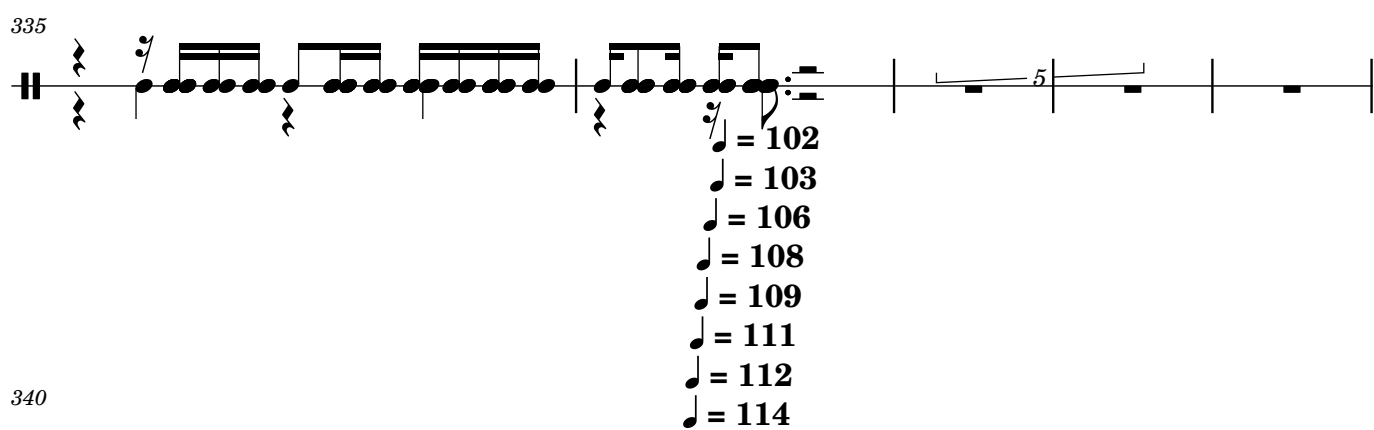
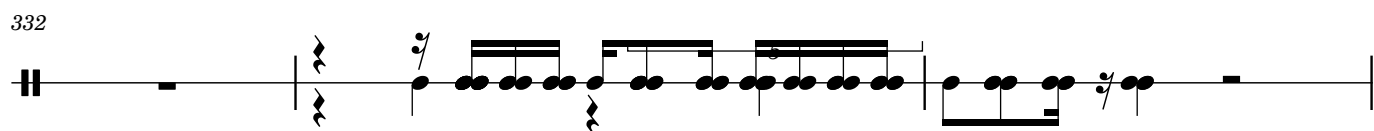
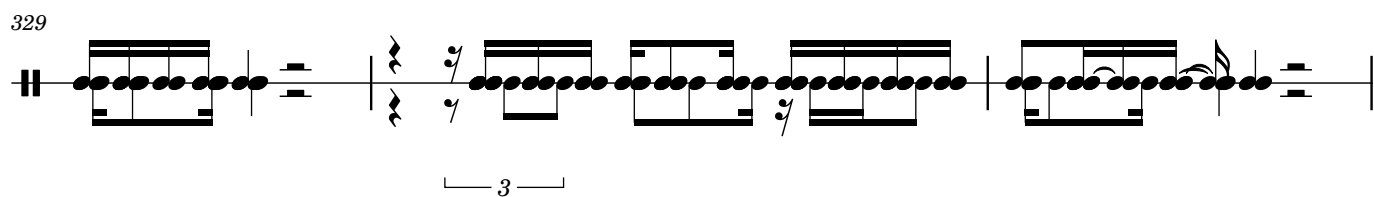
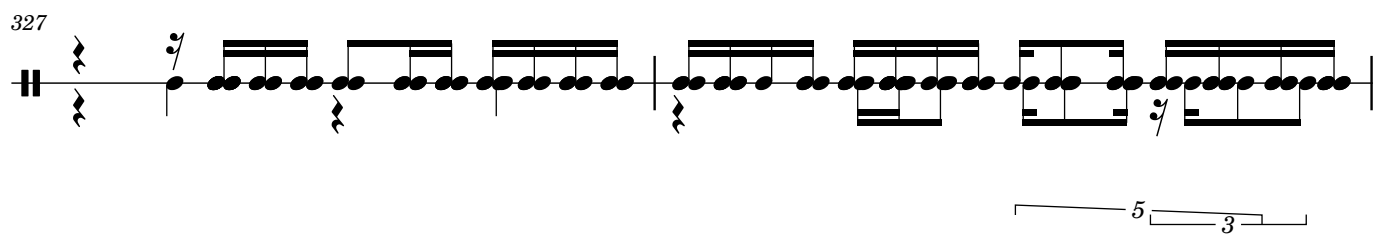
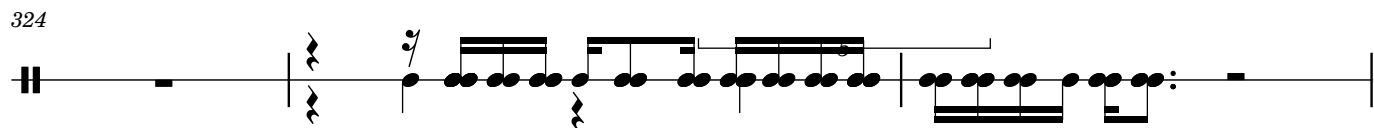
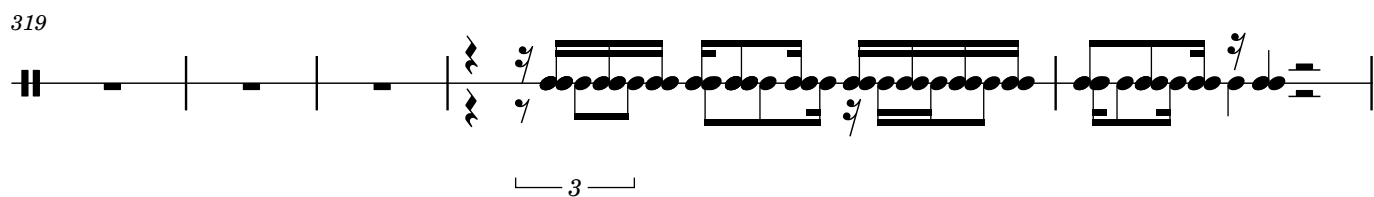
313

3 = 116

315



5



349

The first staff of music begins with a treble clef, a key signature of one sharp (F#), and a common time signature (C). The melody starts with a quarter rest, followed by a quarter note G4, an eighth note A4, and a quarter note B4. This is followed by a triplet of eighth notes: G4, A4, and B4. The melody continues with a quarter note G4, an eighth note A4, and a quarter note B4. The staff ends with a double bar line.

351

353

355

The first staff of music begins with a double bar line, followed by two eighth notes. This is followed by a measure containing a quarter note, an eighth note, and a sixteenth note. The next measure contains a quarter note, an eighth note, and a sixteenth note. The sequence continues with a quarter note, an eighth note, and a sixteenth note. The staff ends with a double bar line.

357