

# **Mr. X's Castle (3)**

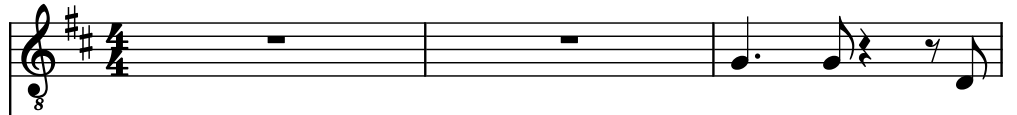
Composer: Yuko Takehara

Game: Mega Man VI

[pianogame.org](http://pianogame.org)

$\text{♩} = 180$

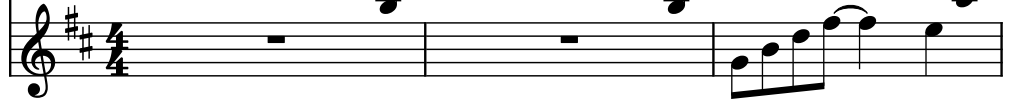
Electric Guitar, Instrument2



Contra Guitar, Instrument3



Vibraphone, Instrument5



4

El. Guit.



C. Guit.



Vib.



7

El. Guit.



C. Guit.



Vib.

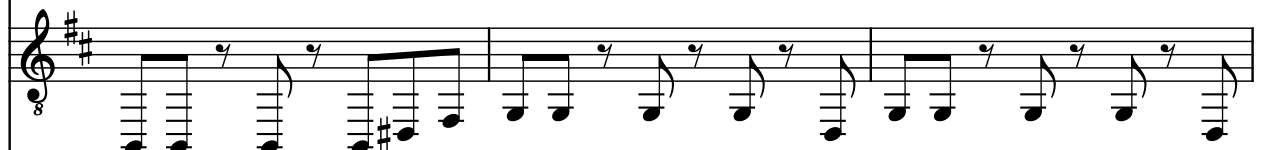


10

El. Guit.



C. Guit.



Vib.



13

El. Guit.

C. Guit.

Vib.

16

El. Guit.

C. Guit.

Vib.

19

El. Guit.

C. Guit.

Vib.

23

El. Guit.

C. Guit.

Vib.

27

El. Guit.

C. Guit.

Vib.

31

El. Guit.

C. Guit.

Vib.

34

El. Guit.

C. Guit.

Vib.

37

El. Guit.

C. Guit.

Vib.

40

El. Guit.

C. Guit.

Vib.

43

El. Guit.

C. Guit.

Vib.

46

El. Guit.

C. Guit.

Vib.

49

El. Guit.

C. Guit.

Vib.

53

El. Guit.

C. Guit.

Vib.

Measures 53-56. The Electric Guitar (El. Guit.) and Country Guitar (C. Guit.) parts feature a rhythmic pattern of eighth notes and quarter notes. The Vibraphone (Vib.) part is mostly silent, with some activity in measure 54.

57

El. Guit.

C. Guit.

Vib.

Measures 57-60. The Electric Guitar (El. Guit.) and Country Guitar (C. Guit.) parts continue with the rhythmic pattern. The Vibraphone (Vib.) part becomes more active, playing a series of chords and single notes.

61

El. Guit.

C. Guit.

Vib.

Measures 61-64. The Electric Guitar (El. Guit.) and Country Guitar (C. Guit.) parts continue with the rhythmic pattern. The Vibraphone (Vib.) part continues with chords and single notes.

65

El. Guit.

C. Guit.

Vib.

Measures 65-68. The Electric Guitar (El. Guit.) and Country Guitar (C. Guit.) parts continue with the rhythmic pattern. The Vibraphone (Vib.) part features a long, sustained chord in measure 65, followed by single notes.