

Main Theme

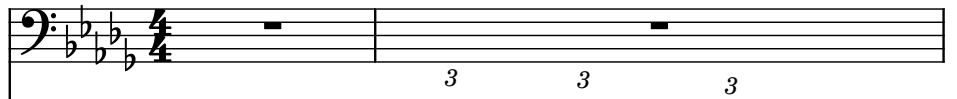
Composer: Rob Hubbard

Game: Skate or Die

pianogame.org

♩ = 125

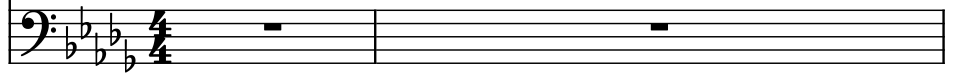
New Age Synthesizer, Bass



Atmosphere Synthesizer, Accomp

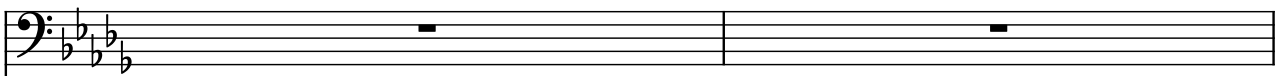


Echoes Synthesizer, Bass 2



3

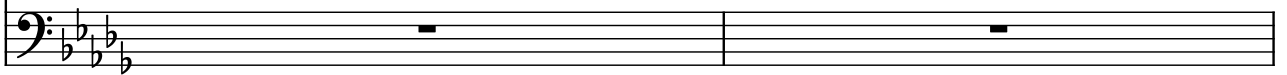
Synth.



Synth.

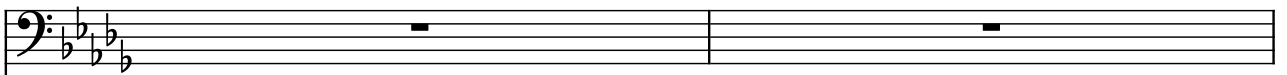


Synth.



5

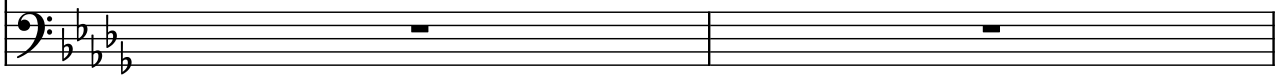
Synth.



Synth.

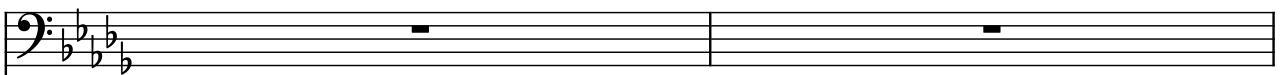


Synth.

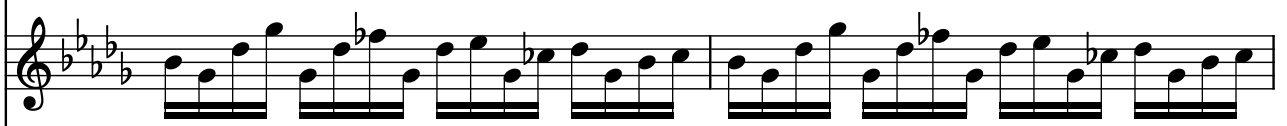


7

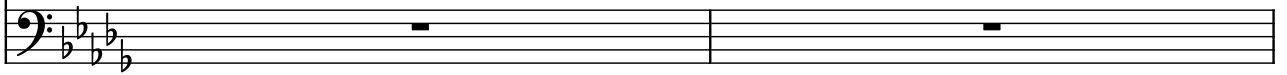
Synth.



Synth.



Synth.



9

Synth.

11

Synth.

13

Synth.

15

Synth.

17

Synth. 

Synth. 

Synth. 

19

Synth. 

Synth. 

Synth. 

21

Synth. 

Synth. 

Synth. 

3 □ 3 □

3

27

Synth.

Synth.

Synth.

29

Synth.

Synth.

Synth.

31

Synth.

Synth.

Synth.

33

Synth.

Synth.

Synth.

35

Synth.

Synth.

Synth.

37

Synth.

Synth.

Synth.

39

Synth.

Synth.

Synth.

3

3

41

Synth.

Synth.

Synth.

3 3 3 3 3

43

Synth.

Synth.

Synth.

45

Synth.

Synth.

Synth.

47

Synth.

Synth.

Synth.

49

Synth.

Synth.

Synth.

51

Synth.

Synth.

Synth.

This system contains measures 51 and 52. The top staff (bass clef) features a melodic line with eighth and sixteenth notes, including triplets and rests. The middle staff (treble clef) plays a rhythmic accompaniment with eighth and sixteenth notes. The bottom staff (bass clef) provides a bass line with eighth and sixteenth notes. The key signature has three flats (E-flat major), and the time signature is 4/4.

53

Synth.

Synth.

Synth.

This system contains measures 53 and 54. The top staff (bass clef) continues the melodic line with eighth and sixteenth notes. The middle staff (treble clef) continues the rhythmic accompaniment. The bottom staff (bass clef) continues the bass line. The key signature remains three flats (E-flat major), and the time signature is 4/4.

55

Synth.

Synth.

Synth.

This system contains measures 55 and 56. The top staff (bass clef) continues the melodic line with eighth and sixteenth notes. The middle staff (treble clef) continues the rhythmic accompaniment. The bottom staff (bass clef) continues the bass line. The key signature remains three flats (E-flat major), and the time signature is 4/4.

3

57

Synth.

Synth.

Synth.

59

Synth.

Synth.

Synth.

61

Synth.

Synth.

Synth.

63

Synth.

Synth.

Synth.

65

Synth.

Synth.

Synth.

67

Synth.

Synth.

Synth.

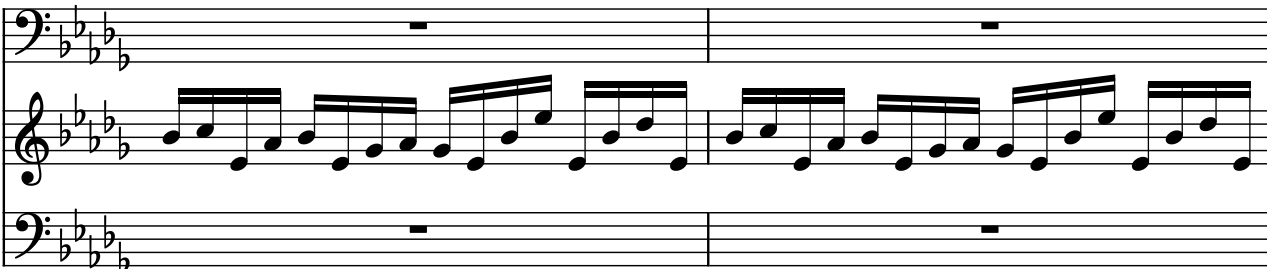
69

Synth.

Synth.

Synth.

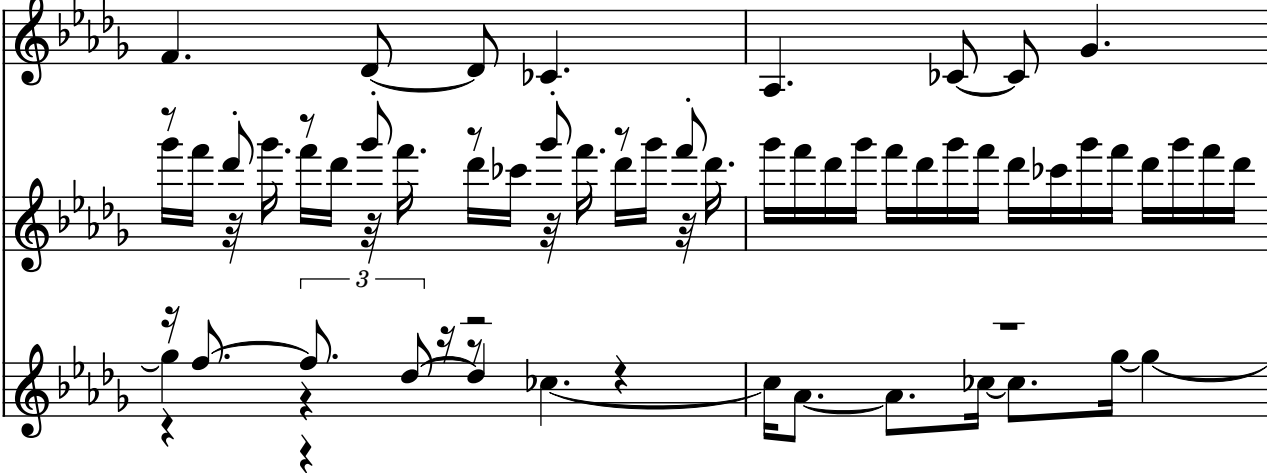
71

Synth. 

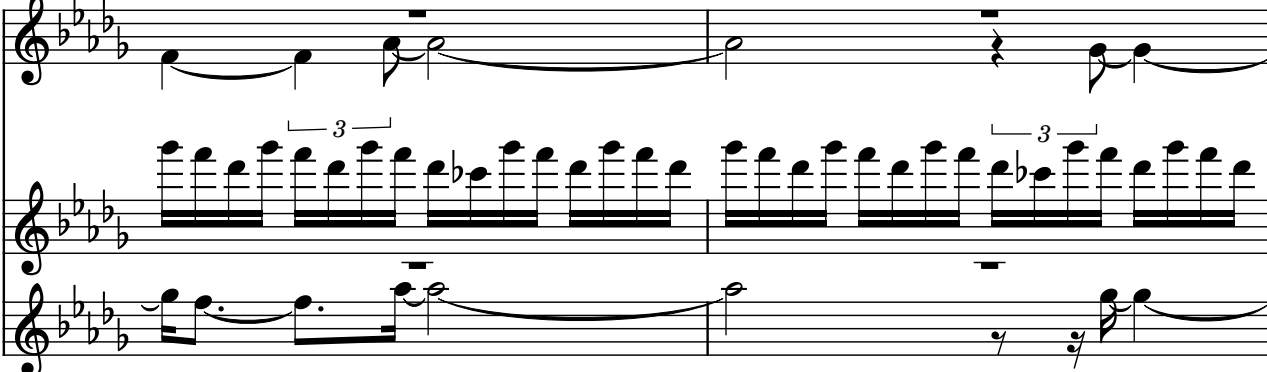
73

Synth. 

75

Synth. 

77

Synth. 

79

Synth.

Synth.

Synth.

81

Synth.

Synth.

Synth.

83

Synth.

Synth.

Synth.

85

Synth.

3

Synth.

Synth.

The image shows a musical score for three synth parts across four measures. The key signature has four flats (B-flat, E-flat, A-flat, D-flat). The first staff (labeled 'Synth.') contains a melodic line starting with a triplet of eighth notes (G4, F4, E4) marked with a '3' and a bracket, followed by a half note (D4), a dotted half note (C4), and a whole note (B3). The second staff (labeled 'Synth.') features a dense, rapid sixteenth-note arpeggiated pattern. The third staff (labeled 'Synth.') has a sparse accompaniment with a half note (G4), a dotted half note (F4), a half note (E4), and a whole note (D4). The score concludes with a double bar line at the end of measure 88.