

Level Clear - "Peace of the World"

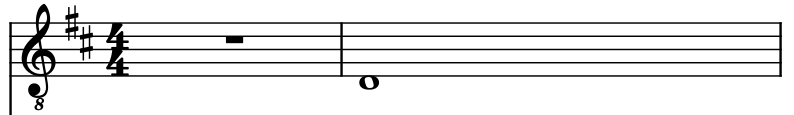
Composer: Tomohito Nishiura

Game: Dark Cloud 2

pianogame.org

♩ = 123

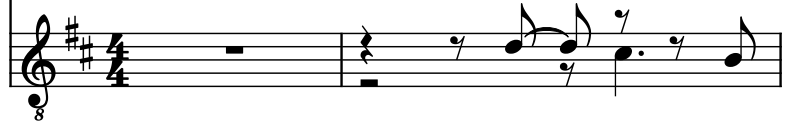
Classical Guitar, Peace of the World



Classical Guitar, Dark Cloud 2/Dark Chronicle



Classical Guitar, Acoustic Guitar



3



7



11



15

Guit.

This system contains measures 15 through 18. The first staff (Guit.) has a treble clef, key signature of two sharps (F# and C#), and a common time signature (C). It starts with an 8-measure rest, followed by a half note G4, a quarter note A4, a quarter note B4, a half note C5, a quarter note B4, a quarter note A4, and a whole note G4. The second staff (Guit.) also has a treble clef and key signature of two sharps. It starts with an 8-measure rest, followed by a half note G4, a quarter note A4, a quarter note B4, a half note C5, a quarter note B4, a quarter note A4, and a whole note G4. The third staff (Guit.) has a treble clef and key signature of two sharps. It starts with an 8-measure rest, followed by a half note G4, a quarter note A4, a quarter note B4, a half note C5, a quarter note B4, a quarter note A4, and a whole note G4.

19

Guit.

This system contains measures 19 through 23. The first staff (Guit.) has a treble clef, key signature of two sharps (F# and C#), and a common time signature (C). It starts with an 8-measure rest, followed by a half note G4, a quarter note A4, a quarter note B4, a half note C5, a quarter note B4, a quarter note A4, and a whole note G4. The second staff (Guit.) also has a treble clef and key signature of two sharps. It starts with an 8-measure rest, followed by a half note G4, a quarter note A4, a quarter note B4, a half note C5, a quarter note B4, a quarter note A4, and a whole note G4. The third staff (Guit.) has a treble clef and key signature of two sharps. It starts with an 8-measure rest, followed by a half note G4, a quarter note A4, a quarter note B4, a half note C5, a quarter note B4, a quarter note A4, and a whole note G4.

24

Guit.

This system contains measures 24 through 27. The first staff (Guit.) has a treble clef, key signature of two sharps (F# and C#), and a common time signature (C). It starts with an 8-measure rest, followed by a half note G4, a quarter note A4, a quarter note B4, a half note C5, a quarter note B4, a quarter note A4, and a whole note G4. The second staff (Guit.) also has a treble clef and key signature of two sharps. It starts with an 8-measure rest, followed by a half note G4, a quarter note A4, a quarter note B4, a half note C5, a quarter note B4, a quarter note A4, and a whole note G4. The third staff (Guit.) has a treble clef and key signature of two sharps. It starts with an 8-measure rest, followed by a half note G4, a quarter note A4, a quarter note B4, a half note C5, a quarter note B4, a quarter note A4, and a whole note G4.

28

Guit.

This system contains measures 28 through 31. The first staff (Guit.) has a treble clef, key signature of two sharps (F# and C#), and a common time signature (C). It starts with an 8-measure rest, followed by a half note G4, a quarter note A4, a quarter note B4, a half note C5, a quarter note B4, a quarter note A4, and a whole note G4. The second staff (Guit.) also has a treble clef and key signature of two sharps. It starts with an 8-measure rest, followed by a half note G4, a quarter note A4, a quarter note B4, a half note C5, a quarter note B4, a quarter note A4, and a whole note G4. The third staff (Guit.) has a treble clef and key signature of two sharps. It starts with an 8-measure rest, followed by a half note G4, a quarter note A4, a quarter note B4, a half note C5, a quarter note B4, a quarter note A4, and a whole note G4.

32

Guit.

Three guitar staves in treble clef with a key signature of two sharps (F# and C#). The first staff (labeled 'Guit.') has a measure rest, followed by a half note G4, a quarter note F#4, a quarter note E4, a half note D4, and a whole note C#3. The second staff has a measure rest, followed by a half note G4, a quarter note F#4, a quarter note E4, a half note D4, and a whole note C#3. The third staff has a measure rest, followed by a half note G4, a quarter note F#4, a quarter note E4, a half note D4, and a whole note C#3.

36

Guit.

Three guitar staves in treble clef with a key signature of two sharps (F# and C#). The first staff (labeled 'Guit.') has a measure rest, followed by a half note G4, a quarter note F#4, a quarter note E4, a half note D4, and a whole note C#3. The second staff has a measure rest, followed by a half note G4, a quarter note F#4, a quarter note E4, a half note D4, and a whole note C#3. The third staff has a measure rest, followed by a half note G4, a quarter note F#4, a quarter note E4, a half note D4, and a whole note C#3.

40

Guit.

Three guitar staves in treble clef with a key signature of two sharps (F# and C#). The first staff (labeled 'Guit.') has a measure rest, followed by a half note G4, a quarter note F#4, a quarter note E4, a half note D4, and a whole note C#3. The second staff has a measure rest, followed by a half note G4, a quarter note F#4, a quarter note E4, a half note D4, and a whole note C#3. The third staff has a measure rest, followed by a half note G4, a quarter note F#4, a quarter note E4, a half note D4, and a whole note C#3.

44

Guit.

Three guitar staves in treble clef with a key signature of two sharps (F# and C#). The first staff (labeled 'Guit.') has a measure rest, followed by a half note G4, a quarter note F#4, a quarter note E4, a half note D4, and a whole note C#3. The second staff has a measure rest, followed by a half note G4, a quarter note F#4, a quarter note E4, a half note D4, and a whole note C#3. The third staff has a measure rest, followed by a half note G4, a quarter note F#4, a quarter note E4, a half note D4, and a whole note C#3.

53

Three staves of music for guitar, labeled 'Guit.' on the left. The key signature is two sharps (F# and C#) and the time signature is 8/8. The first staff contains measures 53, 54, 55, and 56. The second and third staves also contain measures 53, 54, 55, and 56. The notation includes various note values, rests, and articulation marks.

57

Three staves of music for guitar, labeled 'Guit.' on the left. The key signature is two sharps (F# and C#). The first staff has a treble clef and a '8' below it. The second staff has a treble clef and an '8' below it. The third staff has a treble clef and a '3' below it. The music consists of four measures. Measure 57: The first staff has a quarter note G4, a quarter note A4, and a whole note B4. The second staff has a quarter rest, a quarter note G4, a quarter note A4, and a quarter note B4. The third staff has a quarter rest, a quarter note G4, a quarter note A4, and a quarter note B4. Measure 58: The first staff has a whole note B4. The second staff has a quarter note G4, a quarter note A4, and a quarter note B4. The third staff has a quarter note G4, a quarter note A4, and a quarter note B4. Measure 59: The first staff has a whole note B4. The second staff has a quarter note G4, a quarter note A4, and a quarter note B4. The third staff has a quarter note G4, a quarter note A4, and a quarter note B4. Measure 60: The first staff has a whole note B4. The second staff has a quarter note G4, a quarter note A4, and a quarter note B4. The third staff has a quarter note G4, a quarter note A4, and a quarter note B4.

61

Three staves of music for guitar, labeled 'Guit.' on the left. The key signature has two sharps (F# and C#). The first staff (top) has a treble clef and a '8' below it. It contains a sequence of eighth and quarter notes, ending with a whole note chord. The second staff (middle) also has a treble clef and a '8' below it. It contains a sequence of eighth and quarter notes, ending with a complex rhythmic figure. The third staff (bottom) has a treble clef and a '8' below it. It contains a sequence of eighth and quarter notes, ending with a whole note chord.