

The New Origin

Composer: Nobuo Uematsu

Game: Final Fantasy V (Japan)

pianogame.org

$\text{♩} = 148$

Measures 1-3 of the piece. The key signature has one flat (B-flat). The time signature is 4/4. Measures 1 and 2 are whole rests. Measure 3 contains a complex melodic line in the right hand with many accidentals and a corresponding bass line.

Measures 4-5. Measure 4 continues the melodic pattern from measure 3. Measure 5 features a more active bass line with eighth notes.

Measures 6-7. Measure 6 continues the melodic pattern. Measure 7 features a complex melodic line in the right hand with many accidentals and a corresponding bass line.

Measures 8-9. Measure 8 features a complex melodic line in the right hand with many accidentals and a corresponding bass line. Measure 9 features a complex melodic line in the right hand with many accidentals and a corresponding bass line.

Measures 10-11. Measure 10 features a complex melodic line in the right hand with many accidentals and a corresponding bass line. Measure 11 features a complex melodic line in the right hand with many accidentals and a corresponding bass line.

Measures 12-13. Measure 12 features a complex melodic line in the right hand with many accidentals and a corresponding bass line. Measure 13 features a complex melodic line in the right hand with many accidentals and a corresponding bass line.

13

Measures 13 and 14 of a piano piece. The music is in B-flat major (two flats) and 4/4 time. The right hand features a complex melodic line with many beamed sixteenth and thirty-second notes, including triplets and slurs. The left hand provides a steady accompaniment with chords and moving lines. Measure 13 ends with a repeat sign.

14

Measures 15 and 16 of the piano piece. The right hand continues its intricate melodic pattern. The left hand has a more active role with moving eighth and sixteenth notes. Measure 15 ends with a repeat sign.

15

Measures 17 and 18 of the piano piece. The right hand's melody remains highly detailed with many beamed notes. The left hand continues with a rhythmic accompaniment. Measure 17 ends with a repeat sign.

16

Measures 19 and 20 of the piano piece. The right hand's melody becomes more fluid with longer note values and slurs. The left hand features a prominent eighth-note accompaniment. Measure 19 ends with a repeat sign.

18

Measures 21 and 22 of the piano piece. The right hand's melody is characterized by many beamed sixteenth notes and slurs. The left hand has a steady eighth-note accompaniment. Measure 21 ends with a repeat sign.

20

Measures 20 and 21 of a piano piece. The key signature has one flat (B-flat). Measure 20 features a complex melody in the right hand with many beamed sixteenth and thirty-second notes, and a steady eighth-note accompaniment in the left hand. Measure 21 continues the melodic pattern in the right hand, with the left hand providing harmonic support through chords and eighth notes.

22

Measures 22 and 23. Measure 22 shows a more active right hand with frequent sixteenth-note runs, while the left hand has a more melodic line with some rests. Measure 23 features a dense, rapid sixteenth-note passage in the right hand, with the left hand continuing its accompaniment.

24

Measures 24 and 25. Measure 24 has a right hand with a mix of eighth and sixteenth notes, and a left hand with a consistent eighth-note pattern. Measure 25 shows a right hand with a melodic line and a left hand with a steady accompaniment.

26

Measures 26 and 27. Measure 26 features a right hand with a melodic line and a left hand with a steady eighth-note accompaniment. Measure 27 shows a right hand with a melodic line and a left hand with a steady eighth-note accompaniment.

28

Measures 28 and 29. Measure 28 features a right hand with a melodic line and a left hand with a steady eighth-note accompaniment. Measure 29 shows a right hand with a melodic line and a left hand with a steady eighth-note accompaniment.

30

This system contains measures 30 and 31. Measure 30 features a complex texture with a treble staff containing sixteenth-note runs and a bass staff with a steady eighth-note accompaniment. Measure 31 continues the treble staff's melodic line while the bass staff maintains its accompaniment.

32

This system contains measures 32 and 33. Measure 32 shows a continuation of the eighth-note accompaniment in the bass staff, with the treble staff featuring more active melodic movement. Measure 33 introduces a change in the bass staff, which now includes some rests and longer note values.

34

This system contains measures 34 and 35. Measure 34 has a treble staff with a melodic line and a bass staff with a consistent eighth-note accompaniment. Measure 35 features a more complex bass staff with some sixteenth-note passages.

36

This system contains measures 36 and 37. Measure 36 shows a treble staff with a melodic line and a bass staff with a consistent eighth-note accompaniment. Measure 37 features a more complex bass staff with some sixteenth-note passages.

38

Measures 38-39 of a piano piece. Measure 38 features a treble staff with a half note G4, a quarter note F#4, and a half note E4, with a fermata over the E4. The bass staff has a half note D3, a quarter note C3, and a half note B2, with a fermata over the B2. Measure 39 continues with a treble staff of eighth notes (G4, F#4, E4, D4, C4, B3, A3, G3) and a bass staff of eighth notes (D3, C3, B2, A2, G2, F#2, E2, D2). Both staves end with a fermata over the final notes.

40

Measures 40-41 of a piano piece. Measure 40 has a treble staff with a half note G4, a quarter note F#4, and a half note E4, with a fermata over the E4. The bass staff has a half note D3, a quarter note C3, and a half note B2, with a fermata over the B2. Measure 41 continues with a treble staff of eighth notes (G4, F#4, E4, D4, C4, B3, A3, G3) and a bass staff of eighth notes (D3, C3, B2, A2, G2, F#2, E2, D2). Both staves end with a fermata over the final notes.

42

Measures 42-43 of a piano piece. Measure 42 has a treble staff with a half note G4, a quarter note F#4, and a half note E4, with a fermata over the E4. The bass staff has a half note D3, a quarter note C3, and a half note B2, with a fermata over the B2. Measure 43 continues with a treble staff of eighth notes (G4, F#4, E4, D4, C4, B3, A3, G3) and a bass staff of eighth notes (D3, C3, B2, A2, G2, F#2, E2, D2). Both staves end with a fermata over the final notes.

45

Measures 45-46 of a piano piece. Measure 45 has a treble staff with a half note G4, a quarter note F#4, and a half note E4, with a fermata over the E4. The bass staff has a half note D3, a quarter note C3, and a half note B2, with a fermata over the B2. Measure 46 continues with a treble staff of eighth notes (G4, F#4, E4, D4, C4, B3, A3, G3) and a bass staff of eighth notes (D3, C3, B2, A2, G2, F#2, E2, D2). Both staves end with a fermata over the final notes.

47

Measures 47-48 of a piano piece. The key signature has one flat (B-flat). The right hand features a complex melodic line with many beamed sixteenth and thirty-second notes, and some triplets. The left hand plays a steady eighth-note accompaniment. Measure 48 includes a triplet of eighth notes in the right hand.

49

Measures 49-50. Measure 49 continues the intricate right-hand melody. Measure 50 features a triplet of eighth notes in the right hand and a triplet of sixteenth notes in the left hand.

51

Measures 51-52. Measure 51 has a triplet of eighth notes in the right hand. Measure 52 features a long, flowing melodic line in the right hand spanning the measure, with a triplet of eighth notes in the left hand.

53

Measures 53-54. Measure 53 has a triplet of eighth notes in the right hand. Measure 54 features a long, flowing melodic line in the right hand spanning the measure, with a triplet of eighth notes in the left hand.

55

Measures 55-56. Measure 55 continues the intricate right-hand melody. Measure 56 features a triplet of eighth notes in the right hand and a triplet of sixteenth notes in the left hand.

57

59

61

63

65

67

Measures 67-68 of a piano piece. The key signature has one flat (B-flat). Measure 67 features a complex texture with sixteenth-note runs in the right hand and a steady eighth-note accompaniment in the left hand. Measure 68 continues this texture, with the right hand moving to a higher register and the left hand maintaining its rhythmic pattern.

69

Measures 69-70. Measure 69 shows a shift in the right hand's texture, with more sustained chords and a continuation of the left hand's accompaniment. Measure 70 features a more active right hand with sixteenth-note figures, while the left hand continues its steady eighth-note pattern.

71

Measures 71-73. Measure 71 has a right hand with sustained chords and a left hand with eighth-note accompaniment. Measure 72 continues this texture. Measure 73 shows a change in the right hand's texture, with more active sixteenth-note figures, while the left hand continues its steady eighth-note pattern.

74

Measures 74-75. Measure 74 features a right hand with sixteenth-note runs and a left hand with eighth-note accompaniment. Measure 75 continues this texture, with the right hand moving to a higher register and the left hand maintaining its rhythmic pattern.

76

Measures 76-77. Measure 76 shows a right hand with sixteenth-note runs and a left hand with eighth-note accompaniment. Measure 77 continues this texture, with the right hand moving to a higher register and the left hand maintaining its rhythmic pattern.

78

Measures 78-79 of a musical score. The system consists of a grand staff with a treble and bass clef. The key signature has one sharp (F#) and one flat (Bb). Measure 78 features a treble staff with a melodic line of eighth and sixteenth notes, and a bass staff with a steady eighth-note accompaniment. Measure 79 continues the melody in the treble and adds a new melodic line in the bass staff.

80

Measures 80-81 of a musical score. Measure 80 shows a treble staff with a melodic line and a bass staff with a steady eighth-note accompaniment. Measure 81 continues the melody in the treble and adds a new melodic line in the bass staff.

82

Measures 82-83 of a musical score. Measure 82 features a treble staff with a melodic line and a bass staff with a steady eighth-note accompaniment. Measure 83 continues the melody in the treble and adds a new melodic line in the bass staff.

84

Measures 84-85 of a musical score. Measure 84 shows a treble staff with a melodic line and a bass staff with a steady eighth-note accompaniment. Measure 85 continues the melody in the treble and adds a new melodic line in the bass staff.

86

Measures 86-87 of a musical score. Measure 86 features a treble staff with a melodic line and a bass staff with a steady eighth-note accompaniment. Measure 87 continues the melody in the treble and adds a new melodic line in the bass staff.

88

Measures 88-89 of a musical score. Measure 88 features a complex piano accompaniment with a rapid eighth-note pattern in the right hand and a slower eighth-note pattern in the left hand. A melodic line in the right hand is tied across the measure. Measure 89 continues the accompaniment with a change in the right-hand pattern and a new melodic entry in the left hand.

90

Measures 90-91 of a musical score. Measure 90 shows a continuation of the piano accompaniment with a more active right-hand melody. Measure 91 features a change in the right-hand pattern and a new melodic entry in the left hand.

92

Measures 92-93 of a musical score. Measure 92 features a complex piano accompaniment with a rapid eighth-note pattern in the right hand and a slower eighth-note pattern in the left hand. A melodic line in the right hand is tied across the measure. Measure 93 continues the accompaniment with a change in the right-hand pattern and a new melodic entry in the left hand.

94

Measures 94-95 of a musical score. Measure 94 shows a continuation of the piano accompaniment with a more active right-hand melody. Measure 95 features a change in the right-hand pattern and a new melodic entry in the left hand.

96

Measures 96-97 of a musical score. The system consists of a grand staff with a treble and bass clef. The key signature has one flat (B-flat). Measure 96 features a complex melodic line in the treble with many beamed sixteenth notes and a more active bass line. Measure 97 continues this texture with similar rhythmic patterns.

98

$\text{♩} = 143$ $\text{♩} = 125$

Measures 98-100. Measure 98 shows a continuation of the melodic and harmonic material. Measure 99 features a prominent melodic phrase in the treble. Measure 100 concludes the system with a final chord and a fermata over the bass line.

101

$\text{♩} = 115$ $\text{♩} = 98$

Measures 101-106. Measure 101 begins with a new melodic entry in the treble. Measures 102-105 show a series of chords and melodic fragments. Measure 106 ends with a final chord and a fermata.

107

Measures 107-114. Measure 107 starts with a new melodic line in the treble. Measures 108-113 show a series of chords and melodic fragments. Measure 114 ends with a final chord and a fermata.

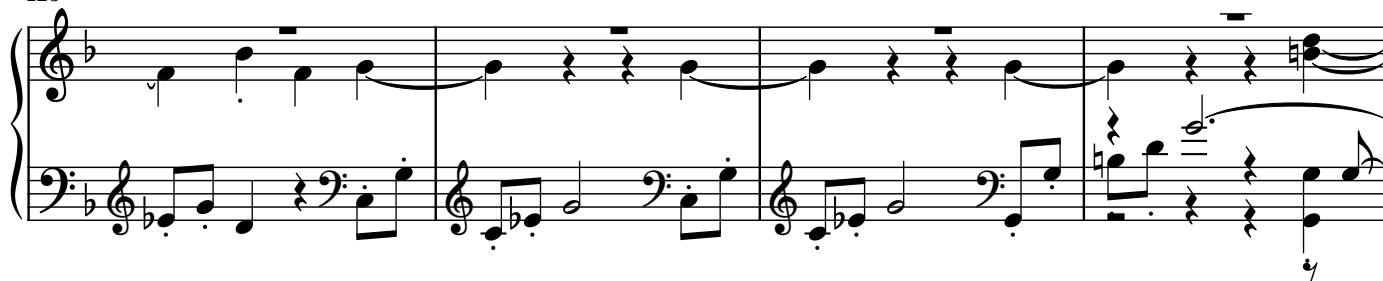
115

Measures 115-118. Measure 115 begins with a new melodic entry in the treble. Measures 116-117 show a series of chords and melodic fragments. Measure 118 ends with a final chord and a fermata.

119



123



127

 $\text{♩} = 100$ 

130



133



136



139

Measures 139-140: Treble and bass staves. Treble staff has a key signature of one flat and a common time signature. Bass staff has a key signature of one flat and a common time signature. The music features complex chordal textures and melodic lines in both hands.

141

Measures 141-143: Treble and bass staves. Treble staff has a key signature of one flat and a common time signature. Bass staff has a key signature of one flat and a common time signature. The music continues with complex chordal textures and melodic lines in both hands.

3

144

Measures 144-148: Treble and bass staves. Treble staff has a key signature of one flat and a common time signature. Bass staff has a key signature of one flat and a common time signature. The music features complex chordal textures and melodic lines in both hands.

3

 $\text{♩} = 135$

3

3

149

Measures 149-153: Treble and bass staves. Treble staff has a key signature of one flat and a common time signature. Bass staff has a key signature of one flat and a common time signature. The music features complex chordal textures and melodic lines in both hands.

3

3

3

154

Measures 154-156: Treble and bass staves. Treble staff has a key signature of one flat and a common time signature. Bass staff has a key signature of one flat and a common time signature. The music features complex chordal textures and melodic lines in both hands.

157

Measures 157-158. The music is in 3/4 time with a key signature of one flat (B-flat). Measure 157 features a treble staff with a triplet of eighth notes (F4, G4, A4) and a bass staff with a triplet of eighth notes (B3, C4, D4). Measure 158 continues the triplet patterns in both staves.

159

Measures 159-160. Measure 159 continues the triplet patterns from the previous system. Measure 160 introduces a new melodic line in the treble staff while maintaining the triplet accompaniment in the bass staff.

161

Measures 161-163. Measure 161 shows a change in the treble staff melody. Measures 162 and 163 continue with complex triplet patterns in both staves, including some sixteenth-note triplets.

164

Measures 164-166. Measure 164 features a prominent triplet in the bass staff. Measures 165 and 166 conclude the system with sustained chords and triplet patterns.

167

3 3 3 3

171

3 3 3 3

174

3 3 3 3

176

3 3 3 3

180

♩ = 132

♩ = 135
3

186

188

Measures 188-189. The score is in 3/4 time with a key signature of one flat (B-flat). Measure 188 features a complex piano accompaniment with triplets in both staves. The right staff has a melodic line with a triplet of eighth notes, and the left staff has a triplet of eighth notes. Measure 189 continues the accompaniment with more triplets and a melodic line in the right staff.

190

Measures 190-191. The score continues with the same piano accompaniment. Measure 190 shows a continuation of the triplet patterns in both staves. Measure 191 introduces a new melodic line in the right staff, featuring a triplet of eighth notes.

192

Measures 192-194. The score continues with the same piano accompaniment. Measure 192 features a complex piano accompaniment with triplets in both staves. The right staff has a melodic line with a triplet of eighth notes, and the left staff has a triplet of eighth notes. Measure 193 continues the accompaniment with more triplets and a melodic line in the right staff. Measure 194 introduces a new melodic line in the right staff, featuring a triplet of eighth notes.

195

Measures 195-197. The score continues with the same piano accompaniment. Measure 195 features a complex piano accompaniment with triplets in both staves. The right staff has a melodic line with a triplet of eighth notes, and the left staff has a triplet of eighth notes. Measure 196 continues the accompaniment with more triplets and a melodic line in the right staff. Measure 197 introduces a new melodic line in the right staff, featuring a triplet of eighth notes.

198

3 3

201

3 3

204

3 3

206

3 3

208

3 3

$\text{♩} = 135$
3 3 3

211 $\text{♩} = 132$

3 3 3

214

3 3 3

216

3 3 3

218

3 3 3

220

Measures 220-222 of a musical score. The key signature has one flat (B-flat). Measure 220 features a treble staff with eighth-note triplets and a bass staff with a triplet of eighth notes. Measure 221 continues the triplet patterns in both staves. Measure 222 shows a change in the bass staff with a triplet of eighth notes and a whole note in the treble staff.

223

Measures 223-225 of a musical score. Measure 223 has a treble staff with a triplet of eighth notes and a bass staff with a triplet of eighth notes. Measure 224 features a treble staff with a triplet of eighth notes and a bass staff with a triplet of eighth notes. Measure 225 shows a treble staff with a triplet of eighth notes and a bass staff with a triplet of eighth notes.

226

Measures 226-228 of a musical score. Measure 226 has a treble staff with a triplet of eighth notes and a bass staff with a triplet of eighth notes. Measure 227 features a treble staff with a triplet of eighth notes and a bass staff with a triplet of eighth notes. Measure 228 shows a treble staff with a triplet of eighth notes and a bass staff with a triplet of eighth notes.

229

Measures 229-231 of a musical score. Measure 229 has a treble staff with a triplet of eighth notes and a bass staff with a triplet of eighth notes. Measure 230 features a treble staff with a triplet of eighth notes and a bass staff with a triplet of eighth notes. Measure 231 shows a treble staff with a triplet of eighth notes and a bass staff with a triplet of eighth notes.

232

Measures 232-233. The key signature has one flat (B-flat). Measure 232 features a treble staff with a melodic line and a bass staff with a triplet of eighth notes. Measure 233 continues the melodic line in the treble and has a triplet of eighth notes in the bass. A large brace groups the two measures.

234

Measures 234-235. Measure 234 has a treble staff with a melodic line and a bass staff with a triplet of eighth notes. Measure 235 continues the melodic line in the treble and has a triplet of eighth notes in the bass. A large brace groups the two measures.

236

Measures 236-237. Measure 236 has a treble staff with a melodic line and a bass staff with a triplet of eighth notes. Measure 237 continues the melodic line in the treble and has a triplet of eighth notes in the bass. A large brace groups the two measures.

238

$\text{♩} = 132$

Measures 238-240. Measure 238 has a treble staff with a melodic line and a bass staff with a triplet of eighth notes. Measure 239 continues the melodic line in the treble and has a triplet of eighth notes in the bass. Measure 240 continues the melodic line in the treble and has a triplet of eighth notes in the bass. A large brace groups the three measures.

244

246

248

248

248

250

3 3 3

253

3 3 3

♩ = 146

256

3 3 3

258

261

Detailed description: The musical score is written for piano on grand staves. Measures 250-255 show a complex interplay of chords and moving lines, with triplets marked above and below the staff. Measure 256 begins with a tempo marking of 146 bpm and continues with dense sixteenth-note passages in both hands. Measures 257-261 show further development of these textures, ending with a final cadence at measure 261.

264

Measures 264-265. The system consists of two staves. The upper staff is in treble clef with a key signature of one flat (B-flat). It contains a series of eighth and sixteenth notes, mostly beamed together. The lower staff is in bass clef and contains a complex pattern of sixteenth notes, some beamed and some with ties. Measure 265 begins with a key signature change to two flats (B-flat and E-flat).

266

Measures 266-267. The system consists of two staves. The upper staff is in treble clef with a key signature of two flats (B-flat and E-flat). It contains a series of eighth and sixteenth notes, mostly beamed together. The lower staff is in bass clef and contains a complex pattern of sixteenth notes, some beamed and some with ties. Measure 267 begins with a key signature change to one flat (B-flat).

268

Measures 268-269. The system consists of two staves. The upper staff is in treble clef with a key signature of one flat (B-flat). It contains a series of eighth and sixteenth notes, mostly beamed together. The lower staff is in bass clef and contains a complex pattern of sixteenth notes, some beamed and some with ties. Measure 269 begins with a key signature change to two flats (B-flat and E-flat).

270

Measures 270-271. The system consists of two staves. The upper staff is in treble clef with a key signature of two flats (B-flat and E-flat). It contains a series of eighth and sixteenth notes, mostly beamed together. The lower staff is in bass clef and contains a complex pattern of sixteenth notes, some beamed and some with ties. Measure 271 begins with a key signature change to one flat (B-flat).

272

Measures 272-273. The system consists of two staves. The upper staff is in treble clef with a key signature of one flat (B-flat). It contains a series of eighth and sixteenth notes, mostly beamed together. The lower staff is in bass clef and contains a complex pattern of sixteenth notes, some beamed and some with ties. Measure 273 begins with a key signature change to two flats (B-flat and E-flat).

275

Measures 275-276. The score is in B-flat major (two flats). Measure 275 features a treble clef with a whole rest and a bass clef with a whole rest. Measure 276 begins with a treble clef containing a half note G4, a quarter note A4, and a half note Bb4, followed by a series of eighth notes. The bass clef contains a half note G3, a quarter note A3, and a half note Bb3, followed by a series of eighth notes. A fermata is placed over the first half note in the treble.

277

Measures 277-278. Measure 277 starts with a treble clef containing a half note G4, a quarter note A4, and a half note Bb4, followed by a series of eighth notes. The bass clef contains a half note G3, a quarter note A3, and a half note Bb3, followed by a series of eighth notes. A fermata is placed over the first half note in the treble. Measure 278 continues the pattern with a treble clef containing a half note G4, a quarter note A4, and a half note Bb4, followed by a series of eighth notes. The bass clef contains a half note G3, a quarter note A3, and a half note Bb3, followed by a series of eighth notes. A fermata is placed over the first half note in the treble.

280

Measures 280-281. Measure 280 starts with a treble clef containing a half note G4, a quarter note A4, and a half note Bb4, followed by a series of eighth notes. The bass clef contains a half note G3, a quarter note A3, and a half note Bb3, followed by a series of eighth notes. A fermata is placed over the first half note in the treble. Measure 281 continues the pattern with a treble clef containing a half note G4, a quarter note A4, and a half note Bb4, followed by a series of eighth notes. The bass clef contains a half note G3, a quarter note A3, and a half note Bb3, followed by a series of eighth notes. A fermata is placed over the first half note in the treble.

283

Measures 283-284. Measure 283 starts with a treble clef containing a half note G4, a quarter note A4, and a half note Bb4, followed by a series of eighth notes. The bass clef contains a half note G3, a quarter note A3, and a half note Bb3, followed by a series of eighth notes. A fermata is placed over the first half note in the treble. Measure 284 continues the pattern with a treble clef containing a half note G4, a quarter note A4, and a half note Bb4, followed by a series of eighth notes. The bass clef contains a half note G3, a quarter note A3, and a half note Bb3, followed by a series of eighth notes. A fermata is placed over the first half note in the treble.

285

Measures 285-286. The key signature has one flat (B-flat). Measure 285 features a complex melodic line in the right hand with many accidentals and a steady eighth-note accompaniment in the left hand. Measure 286 continues the right-hand melody with a descending eighth-note pattern and a more active left-hand accompaniment.

287

Measures 287-288. Measure 287 includes a triplet of eighth notes in the right hand and a steady eighth-note accompaniment in the left hand. Measure 288 features a triplet of eighth notes in the right hand and a more active left-hand accompaniment.

289

Measures 289-290. Measure 289 features a complex melodic line in the right hand with many accidentals and a steady eighth-note accompaniment in the left hand. Measure 290 continues the right-hand melody with a descending eighth-note pattern and a more active left-hand accompaniment.

291

Measures 291-292. Measure 291 features a complex melodic line in the right hand with many accidentals and a steady eighth-note accompaniment in the left hand. Measure 292 continues the right-hand melody with a descending eighth-note pattern and a more active left-hand accompaniment.

293

Measures 293 and 294 of a musical score. Measure 293 features a complex texture with a treble staff containing eighth-note patterns and a bass staff with a triplet of eighth notes. Measure 294 continues with similar textures, including a triplet of eighth notes in the bass staff. A bracket with the number '3' is positioned below the first triplet in measure 293.

3

295

♩ = 125 ♩ = 100 ♩ = 51

Measures 295 through 300 of a musical score. Measure 295 begins with a treble staff containing a sequence of eighth notes and a bass staff with a triplet of eighth notes. Measures 296-299 show a progression of chords and rests. Measure 300 concludes with a final chord. The tempo markings '♩ = 125', '♩ = 100', and '♩ = 51' are placed above the staff at the beginning of measures 295, 296, and 297 respectively.