

Feena

Composer: Yuzo Koshiro

Game: Ys Book I & II

pianogame.org

♩ = 66

Measures 1-6 of a musical score in 4/4 time. The tempo is marked as ♩ = 66. The key signature has one sharp (F#). The right hand plays a series of chords and single notes, while the left hand plays a sustained bass line with some movement in the final measures.

7

Measures 7-11 of the musical score. Measure 7 features a long, sustained chord in the left hand. Measures 8-10 show a rhythmic pattern in the right hand with eighth notes and rests. Measure 11 introduces a new melodic line in the right hand.

12

Measures 12-14 of the musical score. The right hand continues with a melodic line, and the left hand maintains a complex rhythmic accompaniment with eighth notes and rests.

15

Measures 15-17 of the musical score. The right hand features a melodic line with some rests, while the left hand continues with a rhythmic accompaniment.

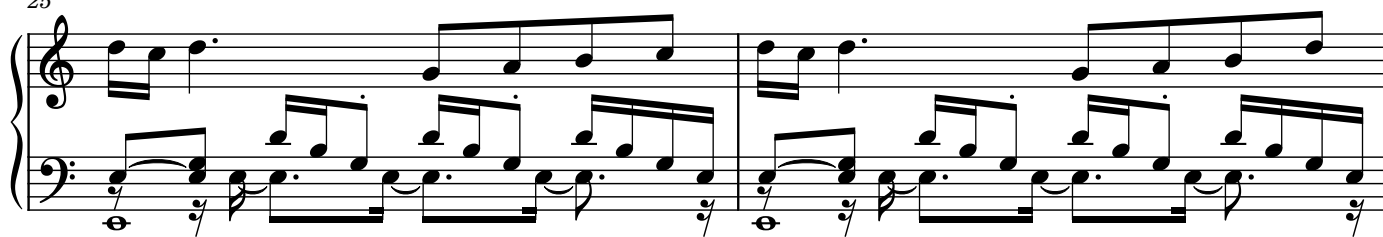
18

Measures 18-22 of the musical score. Measures 18-20 show a melodic line in the right hand with some rests. Measures 21-22 feature a sustained chord in the right hand and a simple bass line in the left hand.

23

Measures 23-24 of the musical score. Both hands play a continuous eighth-note pattern, creating a rhythmic texture.

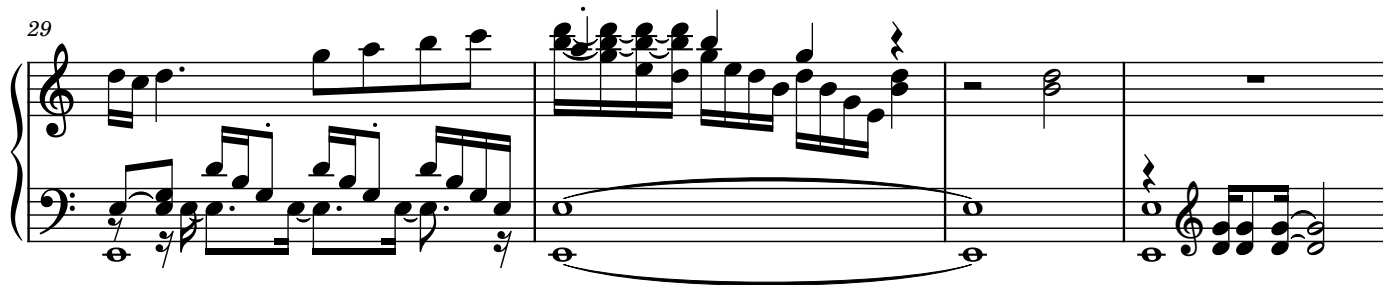
25



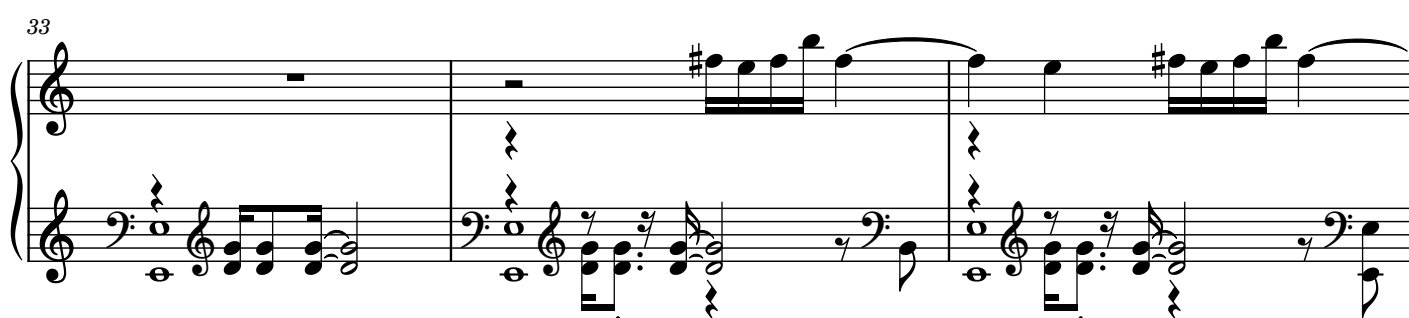
27



29



33



36



39



43

Measures 43-46 of a piano piece. Measures 43-45 feature a treble clef with a key signature of one sharp (F#) and a bass clef with a key signature of one flat (Bb). Measures 43-45 have a whole note in the bass and a half note in the treble. Measure 46 has a half note in the bass and a half note in the treble. The treble clef has a key signature of one sharp (F#) and a bass clef with a key signature of one flat (Bb).

47

Measures 47-48 of a piano piece. Measures 47-48 have a half note in the bass and a half note in the treble. The treble clef has a key signature of one sharp (F#) and a bass clef with a key signature of one flat (Bb).

49

Measures 49-51 of a piano piece. Measures 49-51 have a half note in the bass and a half note in the treble. The treble clef has a key signature of one sharp (F#) and a bass clef with a key signature of one flat (Bb).

52

Measures 52-53 of a piano piece. Measures 52-53 have a half note in the bass and a half note in the treble. The treble clef has a key signature of one sharp (F#) and a bass clef with a key signature of one flat (Bb). A triplet of eighth notes is marked with a '3' in measure 52.

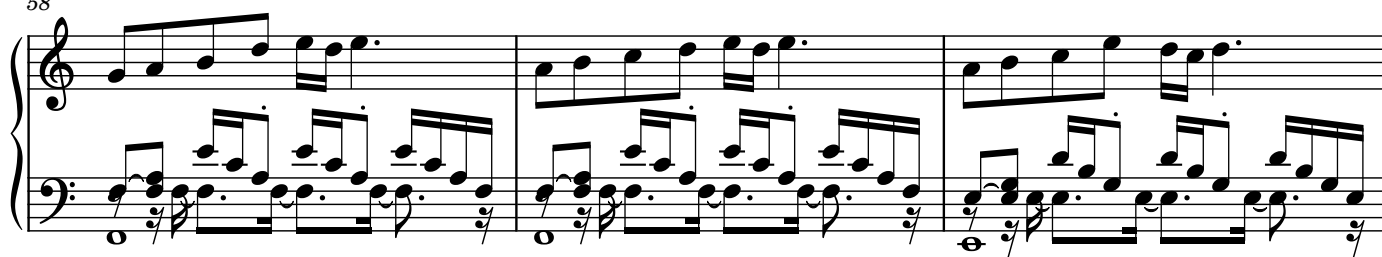
54

Measures 54-55 of a piano piece. Measures 54-55 have a half note in the bass and a half note in the treble. The treble clef has a key signature of one sharp (F#) and a bass clef with a key signature of one flat (Bb).

56

Measures 56-57 of a piano piece. Measures 56-57 have a half note in the bass and a half note in the treble. The treble clef has a key signature of one sharp (F#) and a bass clef with a key signature of one flat (Bb).

58



61

