

Freezezy Peak (2)

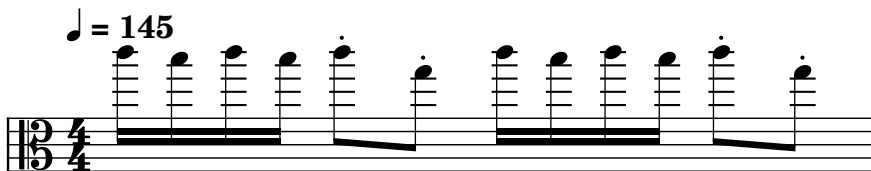
Composer: Grant Kirkhope

Game: Banjo-Kazooie

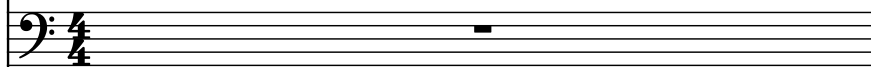
pianogame.org

♩ = 145

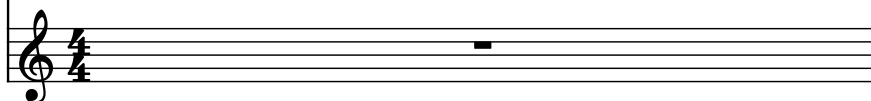
Violas (section), Strings (High)



Violoncellos (section), Strings (Melody)



Strings, StringInstrument

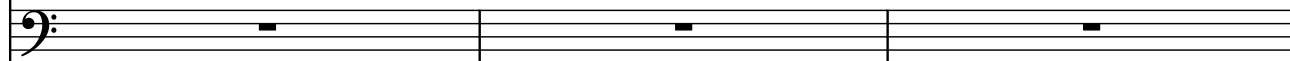


2

Vlas.



Vcs.

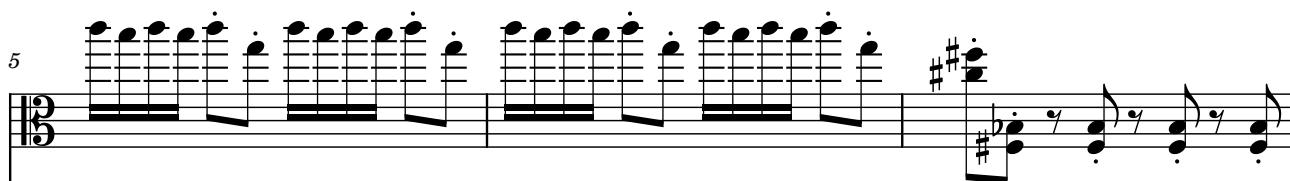


St.

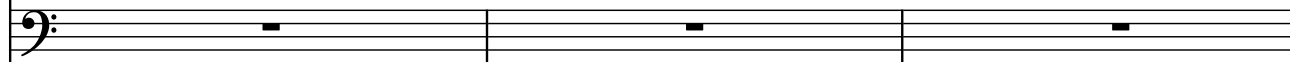


5

Vlas.



Vcs.

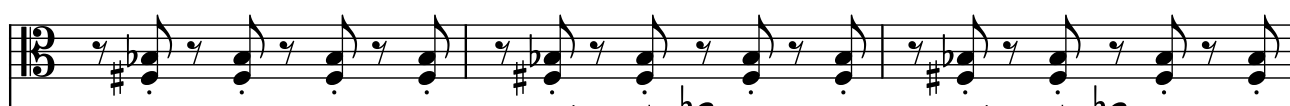


St.



8

Vlas.



Vcs.



St.



11

Vlas.

Vcs.

St.

13

Vlas.

Vcs.

St.

16

Vlas.

Vcs.

St.


19

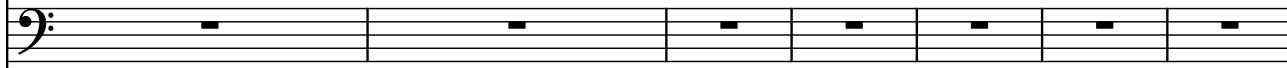
Vlas.

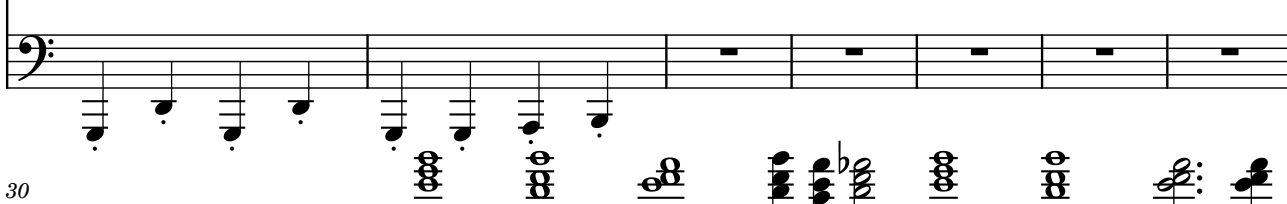
Vcs.

St.


23


Vlas. 

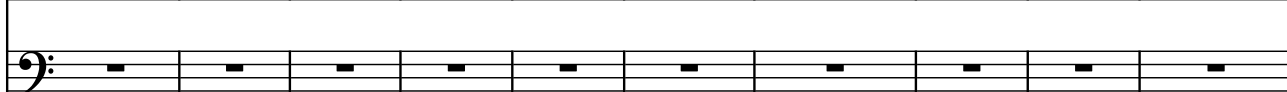
Vcs. 

St. 

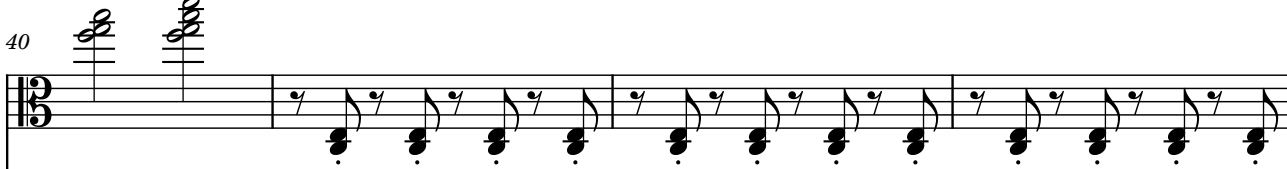
30

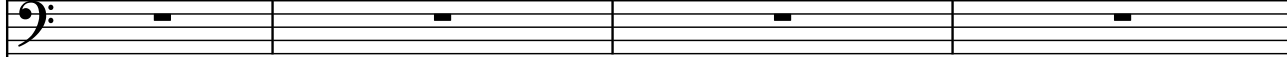
Vlas. 


Vcs. 

St. 


40

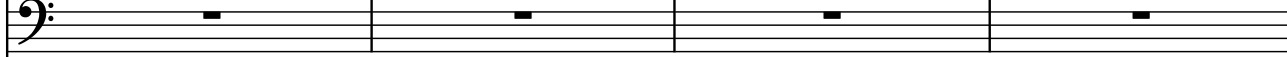
Vlas. 


Vcs. 

St. 


44

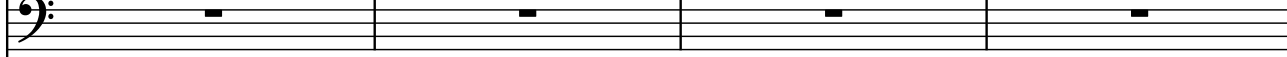
Vlas. 


Vcs. 

St. 

48

Vlas. 

Vcs. 

St. 

52

Vlas.

68

Vlas.

Vcs.

St.

Measures 68-69. Vlas. part features complex chords and eighth notes. Vcs. and St. parts are silent.

70

Vlas.

Vcs.

St.

Measures 70-71. Vlas. part continues with complex chords and eighth notes. Vcs. and St. parts are silent.

72

Vlas.

Vcs.

St.

Measures 72-73. Vlas. part has complex chords and eighth notes. Vcs. part is silent. St. part enters with a melody in treble clef.

74

Vlas.

Vcs.

St.

Measures 74-76. Vlas. part has complex chords and eighth notes. Vcs. part is silent. St. part continues with a melody in treble clef.

77

Vlas.

Vcs.

St.

Measures 77-79. Vlas. part has complex chords and eighth notes. Vcs. part is silent. St. part continues with a melody in treble clef.

83

86

89

Vlas. *Василиса, Василиса, Василиса, Василиса!*
 Vcs. *Василиса, Василиса, Василиса, Василиса!*
 St. *Василиса, Василиса, Василиса, Василиса!*

93

Vlas.

Vcs.

St.

Measures 93-97. Vlas. part: 93 (quarter rest, eighth notes), 94 (quarter notes), 95 (quarter notes), 96 (quarter notes), 97 (quarter notes). Vcs. part: 93-97 (all rests). St. part: 93-94 (rest), 95 (quarter notes), 96 (quarter notes), 97 (quarter notes).

98

Vlas.

Vcs.

St.

Measures 98-102. Vlas. part: 98-101 (rest), 102 (chord). Vcs. part: 98-102 (all rests). St. part: 98-102 (all rests).

108

Vlas.

Vcs.

St.

Measures 108-113. Vlas. part: 108 (chord), 109 (chord), 110 (eighth notes), 111 (eighth notes), 112 (eighth notes), 113 (eighth notes). Vcs. part: 108-113 (all rests). St. part: 108-109 (rest), 110 (quarter notes), 111 (quarter notes), 112 (quarter notes), 113 (quarter notes).

114

Vlas.

Vcs.

St.

Measures 114-117. Vlas. part: 114 (eighth notes), 115 (eighth notes), 116 (eighth notes), 117 (eighth notes). Vcs. part: 114-117 (all rests). St. part: 114 (quarter notes), 115 (quarter notes), 116 (quarter notes), 117 (quarter notes).

118


Vlas.

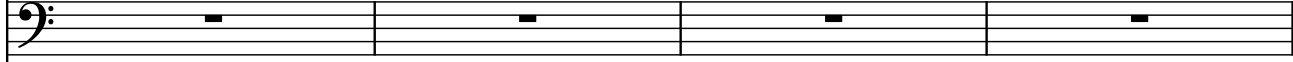
Vcs.


St.

Measures 118-121. Vlas. part: 118 (eighth notes), 119 (eighth notes), 120 (eighth notes), 121 (eighth notes). Vcs. part: 118-121 (all rests). St. part: 118 (quarter notes), 119 (quarter notes), 120 (quarter notes), 121 (quarter notes).


122

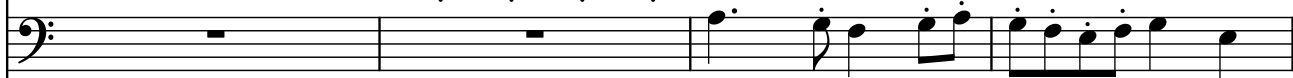
Vlas. 


Vcs. 

St. 

126

Vlas. 

Vcs. 

St. 

130

Vlas. 

Vcs. 

St. 

134

Vlas. 

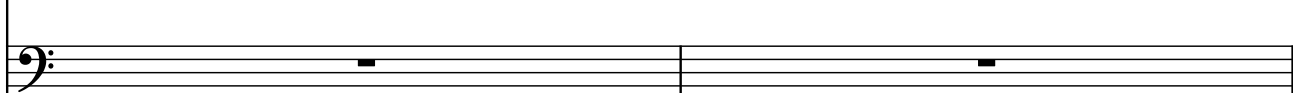
Vcs. 

St. 

137

Vlas. 

Vcs. 

St. 

139

Vlas.

Vcs.

St.

Measures 139-140. The Vlas. part features a complex melodic line with many accidentals and slurs. The Vcs. and St. parts are silent, indicated by a whole rest on a single line.

141

Vlas.

Vcs.

St.

Measures 141-142. The Vlas. part continues with a complex melodic line. The Vcs. and St. parts are silent, indicated by a whole rest on a single line.

143

Vlas.

Vcs.

St.

Measures 143-144. The Vlas. part features a complex melodic line with many accidentals and slurs. The Vcs. and St. parts are silent, indicated by a whole rest on a single line.