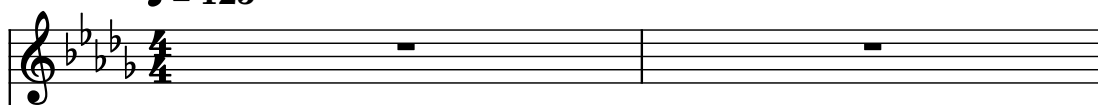


Yuka - "Fight Under The Moon" (Soaring With Remix)

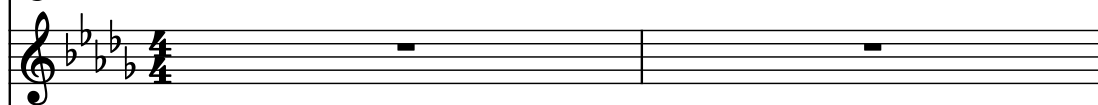
Composer: Takayuki Iwai
Game: Super V. G (Japan)
pianogame.org

♩ = 125

Violins (section), tk1



Brass, tk2

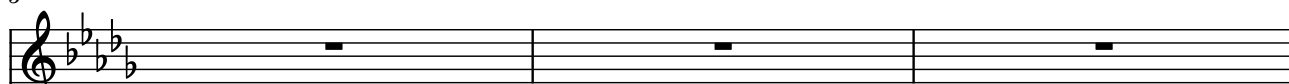


Contrabass, tk3

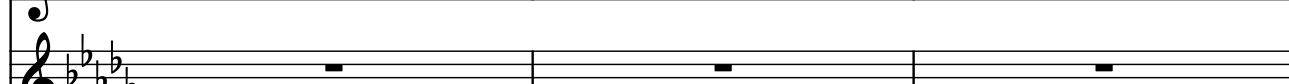


3

Vlns.



Br.

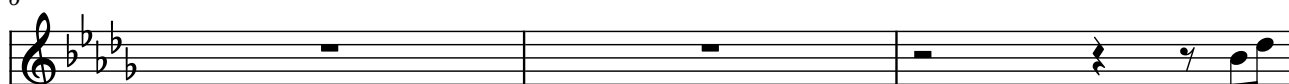


Cb.

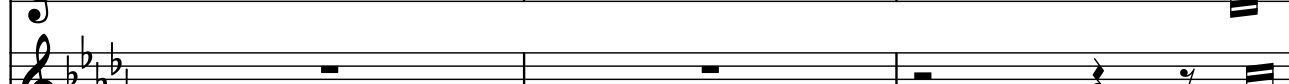


6

Vlns.



Br.



Cb.

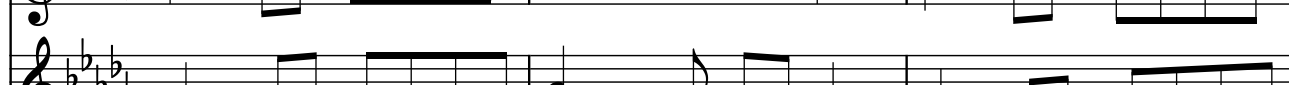


9

Vlns.



Br.

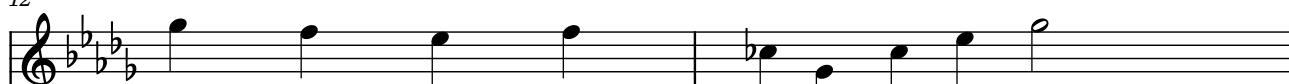


Cb.

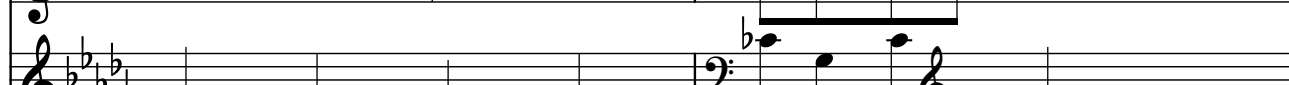


12

Vlns.



Br.



Cb.



16

Vlns.

Br.

Cb.

19

Vlns.

Br.

Cb.

21

Vlns.

Br.

Cb.

This image shows measures 21 and 22 of the musical score for 'The Swan'. The score is for three parts: Violins (Vlns.), Brass (Br.), and Cello (Cb.). The key signature is B-flat major (two flats) and the time signature is 4/4. Measure 21 features a melodic line in the Violins, a descending line in the Brass, and a rhythmic accompaniment in the Cello. Measure 22 continues these patterns with some melodic development in the Violins and Brass.

23

Vlms.

Br.

Cb.

25

Vlns. 

Br. 

Cb. 

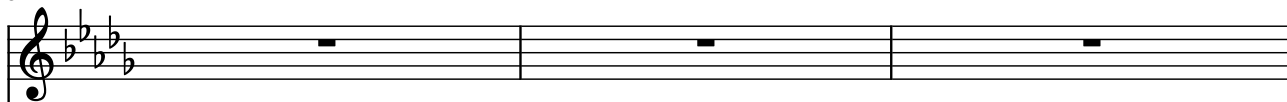
28

Vlns. 


Br. 

Cb. 

31

Vlns. 

Br. 

Cb. 

34

Vlns. 

Br. 

Cb. 

37

Vlns. 

Br. 

Cb. 

40

Vlns.

Br.

Cb.

Measures 40-41. Violins and Brasses have whole rests. The Cello plays a continuous eighth-note pattern in the bass clef.

42

Vlns.

Br.

Cb.

Measures 42-43. Violins and Brasses play a half note followed by a quarter note. The Cello continues its eighth-note pattern.

44

Vlns.

Br.

Cb.

Measures 44-45. Violins and Brasses play a half note followed by a quarter note. The Cello continues its eighth-note pattern.

46

Vlns.

Br.

Cb.

Measures 46-48. Violins and Brasses play a half note followed by a quarter note. The Cello continues its eighth-note pattern.

49

Vlns.

Br.

Cb.

Measures 49-51. Violins and Brasses play a half note followed by a quarter note. The Cello continues its eighth-note pattern.

52

Vlns.

Br.

Cb.

54

Vlns.

Br.

Cb.

56

Vlns.

Br.

Cb.

59

Vlns.

Br.

Cb.

61

Vlns.

Br.

Cb.

63

Vlns.

Br.

Cb.

Measures 63-64. Violins and Brasses have whole rests. Cello has a continuous eighth-note pattern.

65

Vlns.

Br.

Cb.

Measures 65-67. Violins and Brasses have whole rests. Cello has a continuous eighth-note pattern.

68

Vlns.

Br.

Cb.

Measures 68-70. Violins and Brasses have whole rests. Cello has a continuous eighth-note pattern.

71

Vlns.

Br.

Cb.

Measures 71-73. Violins and Brasses have whole rests. Cello has a continuous eighth-note pattern.

74

Vlns.

Br.

Cb.

Measures 74-76. Violins and Brasses have whole rests. Cello has a continuous eighth-note pattern.

77

Vlns. 

Br. 

Cb. 


80


Vlns. 


Br. 

Cb. 

82

Vlns. 

Br. 

Cb. 

84

Vlns. 

Br. 

Cb. 

86

Vlns. 

Br. 

Cb. 

89

Vlns.

Br.

Cb.

92

Vlns.

Br.

Cb.

94

Vlns.

Br.

Cb.

96

Vlns.

Br.

Cb.

99

Vlns.

Br.

Cb.

101

Vlns.

Br.

Cb.

Measures 101-102 of a musical score. The Vlns. part (Violins) is in treble clef, playing a melody of eighth notes. The Br. part (Bassoon) is in bass clef, playing a melody of eighth notes. The Cb. part (Cello) is in bass clef, playing a rhythmic pattern of eighth notes. The key signature is three flats (B-flat, E-flat, A-flat).

103

Vlns.

Br.

Cb.

Measures 103-104 of a musical score. The Vlns. part (Violins) is in treble clef, playing a sustained note with a long slur. The Br. part (Bassoon) is in bass clef, playing a sustained note with a long slur. The Cb. part (Cello) is in bass clef, playing a rhythmic pattern of eighth notes. The key signature is three flats (B-flat, E-flat, A-flat).