

# Map

Composer: David Wise

Game: Donkey Kong Land

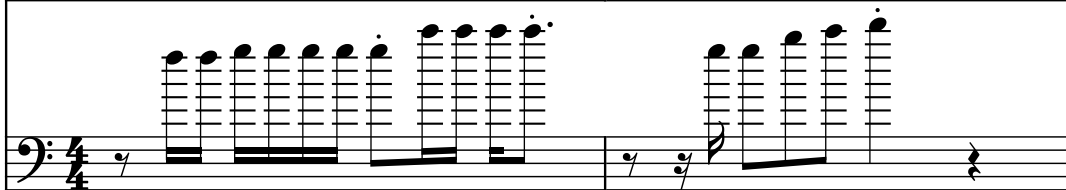
[pianogame.org](http://pianogame.org)

♩ = 101

Contrabass, Staff



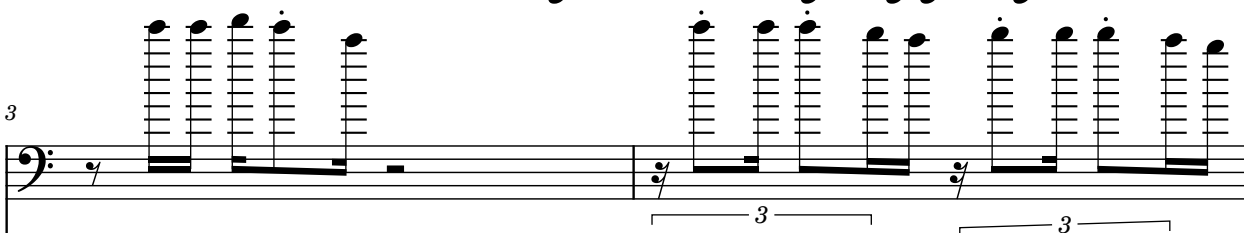
Contrabass, Staff-1



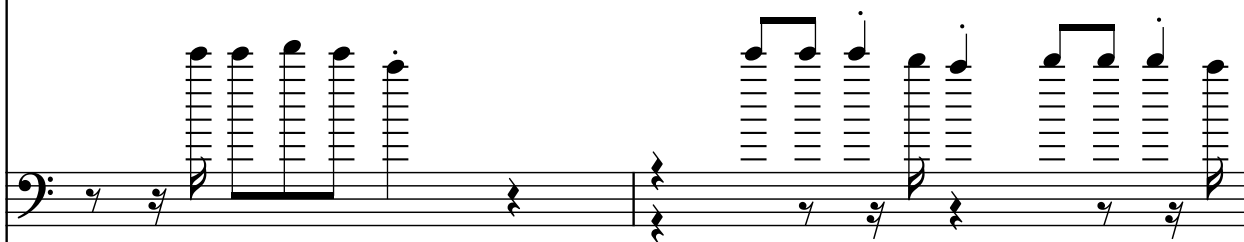
Electric Guitar, Staff-2



Cb.



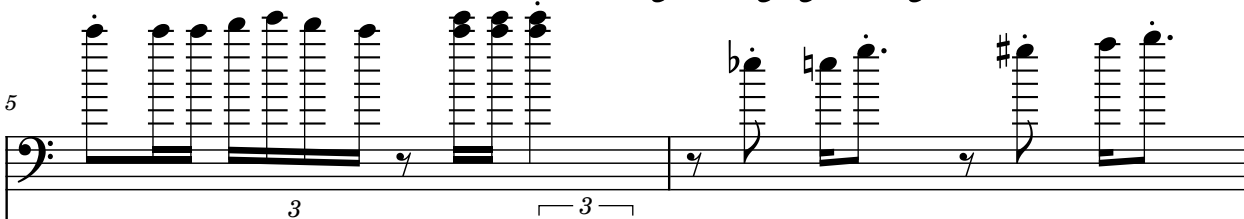
Cb.



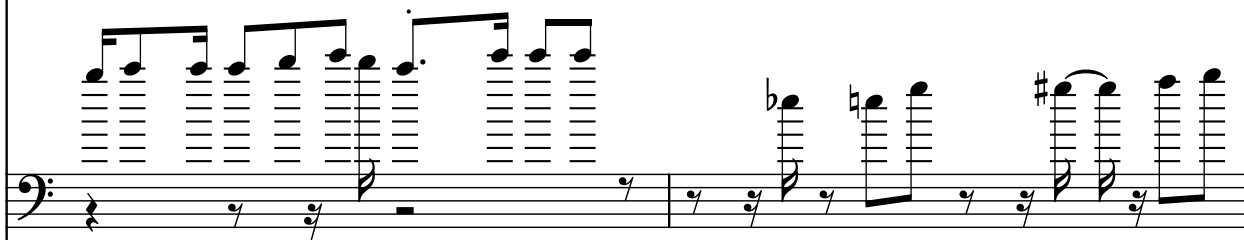
El. Guit.



Cb.



Cb.



El. Guit.



7

Cb.

Cb.

El. Guit.

8

9

Cb.

Cb.

El. Guit.

8

11

Cb.

Cb.

El. Guit.

8

Detailed description of the musical score: The score is for three instruments: Contrabass (Cb.), Electric Guitar (El. Guit.), and another Contrabass (Cb.). It is written in a key with one flat (Bb) and a 4/4 time signature. The first system (measures 7-8) shows the Cb. parts with complex, multi-measure chords and triplets, while the El. Guit. part plays a steady eighth-note pattern. The second system (measures 9-10) continues the complex textures with more triplets and slurs. The third system (measures 11-12) shows a more rhythmic approach with eighth-note patterns in the Cb. parts and triplets in the El. Guit. part.

13

Cb.

3 3

Cb.

3 3

El. Guit.

8

16

Cb.

3 3 3 3

Cb.

El. Guit.

8

18

Cb.

3 3 3 3

Cb.

El. Guit.

8

Detailed description of the musical score: The score is written for three instruments: Contrabass (Cb.), Contrabass (Cb.), and Electric Guitar (El. Guit.). It is divided into three systems. The first system starts at measure 13. The first Cb. line has a melodic line with triplets and a melodic line. The second Cb. line has triplets. The El. Guit. line has a melodic line. The second system starts at measure 16. The first Cb. line has triplets. The second Cb. line has triplets. The El. Guit. line has a melodic line. The third system starts at measure 18. The first Cb. line has triplets. The second Cb. line has triplets. The El. Guit. line has a melodic line. The score includes various musical notations such as notes, rests, and triplets.

20

Cb.

Cb.

El. Guit.

22

Cb.

Cb.

El. Guit.

24

Cb.

Cb.

El. Guit.

Detailed description of the musical score: The score is written for three instruments: two Contrabasses (Cb.) and an Electric Guitar (El. Guit.). The first system (measures 20-21) shows the Cb. parts playing dense, complex chords with many notes, while the El. Guit. plays a steady eighth-note pattern. The second system (measures 22-23) shows the Cb. parts playing more melodic lines, and the El. Guit. playing triplet patterns. The third system (measures 24-25) continues the melodic lines in the Cb. parts and triplet patterns in the El. Guit. The score concludes with a double bar line at the end of measure 25.