

Time to Rest - After the Battle

Composer: Yasunori Mitsuda

Game: Chrono Trigger

pianogame.org

$\text{♩} = 123$

Alto Flute, Flute



Alto Recorder, Recorder



Clarinet, Clarinet



9

A. Fl.



A. Rec.

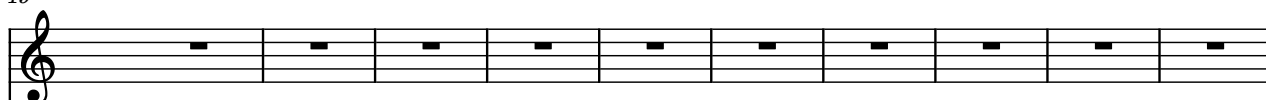


Cl.



19

A. Fl.



A. Rec.

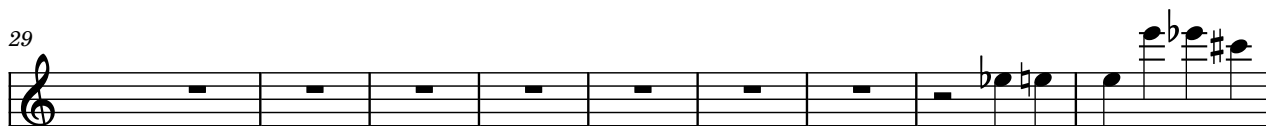


Cl.

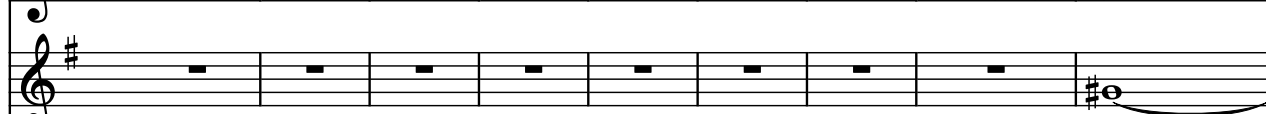


29

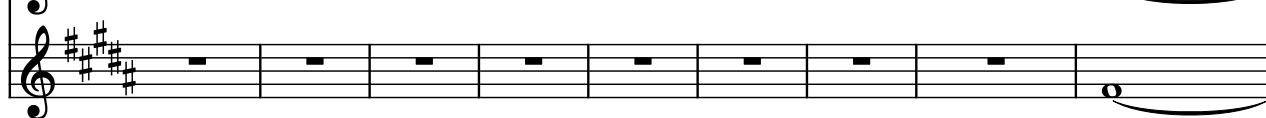
A. Fl.



A. Rec.



Cl.

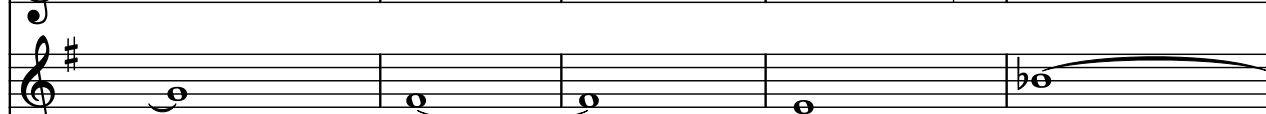


38

A. Fl.



A. Rec.



Cl.



43

A. Fl.

A. Rec.

Cl.

49

A. Fl.

A. Rec.

Cl.

54

A. Fl.

A. Rec.

Cl.

58

A. Fl.

A. Rec.

Cl.

62

A. Fl.

A. Rec.

Cl.

66

A. Fl.

A. Rec.

Cl.

Measures 66-69. The Flute part (A. Fl.) plays a continuous eighth-note melody. The Recorder (A. Rec.) and Clarinet (Cl.) parts play sustained notes with long slurs.

70

A. Fl.

A. Rec.

Cl.

Measures 70-73. The Flute part (A. Fl.) continues with eighth-note patterns. The Recorder (A. Rec.) and Clarinet (Cl.) parts have sustained notes with slurs.

74

A. Fl.

A. Rec.

Cl.

Measures 74-77. The Flute part (A. Fl.) continues with eighth-note patterns. The Recorder (A. Rec.) and Clarinet (Cl.) parts have sustained notes with slurs.

78

A. Fl.

A. Rec.

Cl.

Measures 78-81. The Flute part (A. Fl.) continues with eighth-note patterns. The Recorder (A. Rec.) and Clarinet (Cl.) parts have sustained notes with slurs.

82

A. Fl.

A. Rec.

Cl.

Measures 82-85. The Flute part (A. Fl.) continues with eighth-note patterns. The Recorder (A. Rec.) and Clarinet (Cl.) parts have sustained notes with slurs.