

Mario Raceway (2)

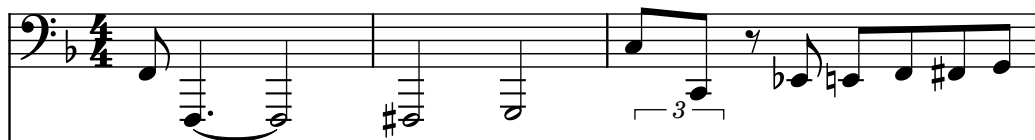
Composer: Kenta Nagata

Game: Mario Kart 64

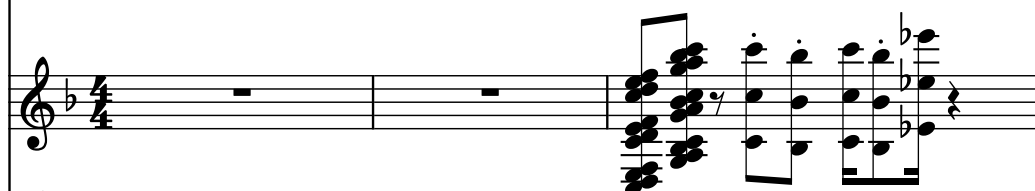
pianogame.org

♩ = 141

Bass Synthesizer, bass



Brass, brass



Hammond Organ, organ



4

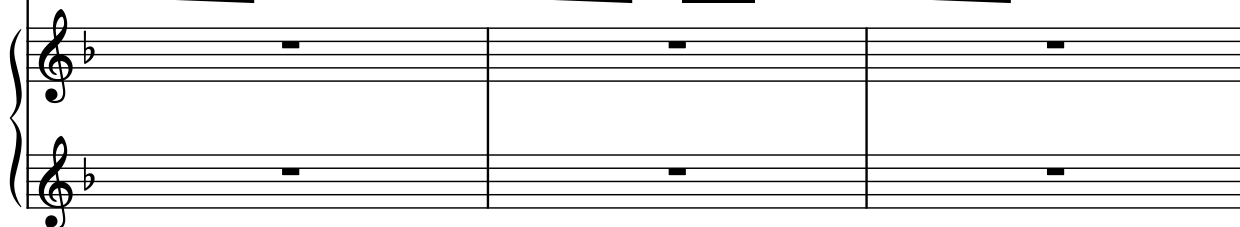
Synth.



Br.



Hm. Org.



7

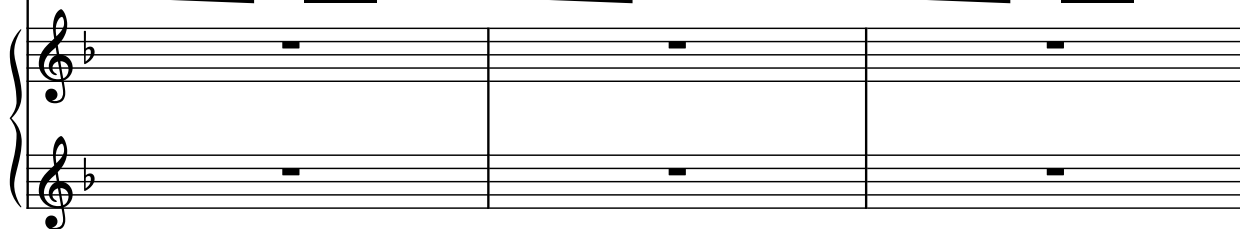
Synth.



Br.



Hm. Org.



10

Synth.

Br.

Hm. Org.

Measures 10-12: Synth. (Bass) plays a descending eighth-note pattern. Br. (Trumpet) is silent. Hm. Org. (Harmonium Organ) plays a descending eighth-note pattern in the right hand and a descending eighth-note pattern in the left hand.

13

Synth.

Br.

Hm. Org.

Measures 13-15: Synth. (Bass) continues the descending eighth-note pattern. Br. (Trumpet) is silent. Hm. Org. (Harmonium Organ) plays a descending eighth-note pattern in the right hand and a descending eighth-note pattern in the left hand.

16

Synth.

Br.

Hm. Org.

Measures 16-18: Synth. (Bass) continues the descending eighth-note pattern. Br. (Trumpet) is silent. Hm. Org. (Harmonium Organ) plays a descending eighth-note pattern in the right hand and a descending eighth-note pattern in the left hand.

19

Synth.

Br.

Hm. Org.

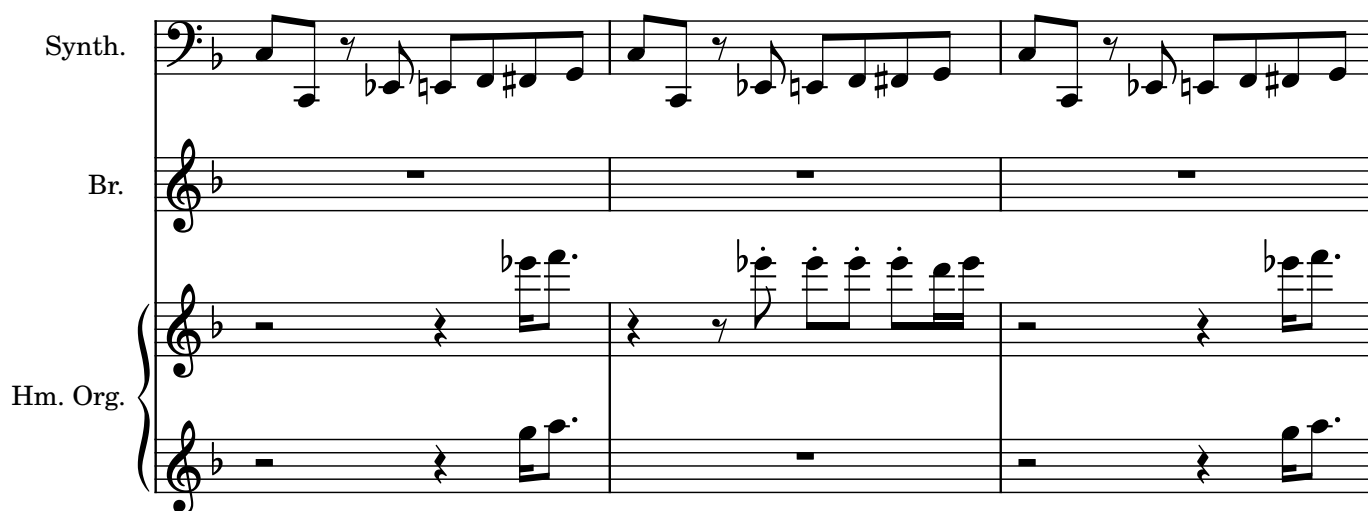
Measures 19-21: Synth. (Bass) continues the descending eighth-note pattern. Br. (Trumpet) is silent. Hm. Org. (Harmonium Organ) plays a descending eighth-note pattern in the right hand and a descending eighth-note pattern in the left hand.

22

Synth.

Br.

Hm. Org.



25

Synth.

Br.

Hm. Org.

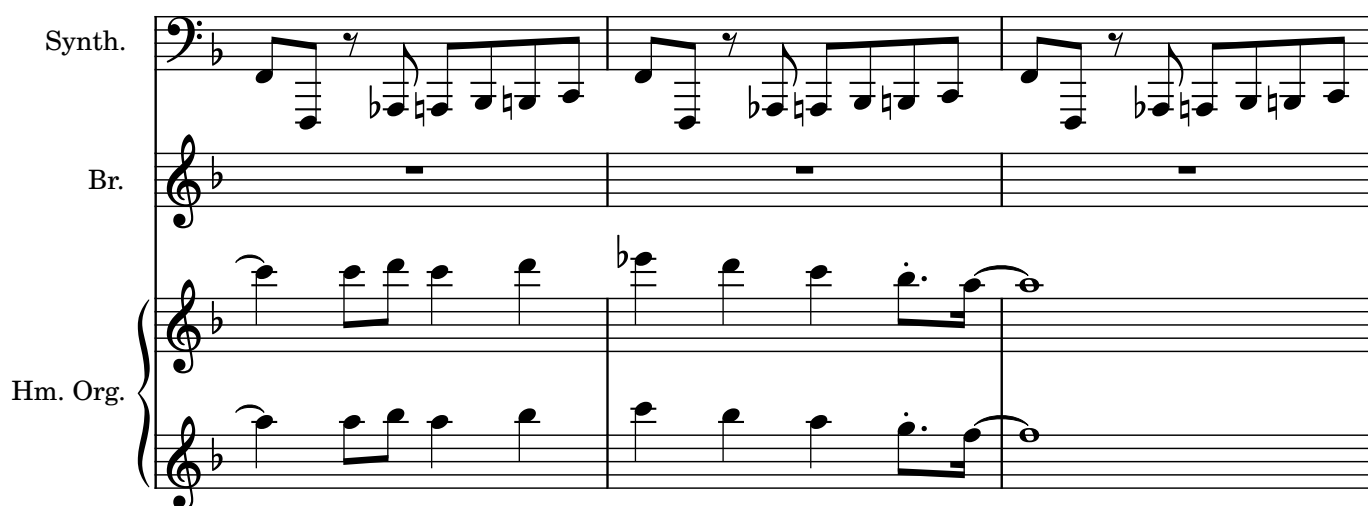


28

Synth.

Br.

Hm. Org.



31

Synth.

Br.

Hm. Org.

34

Synth.

Br.

Hm. Org.

37

Synth.

Br.

Hm. Org.

40

Synth.

Br.

Hm. Org.

This musical score segment covers measures 40, 41, and 42. The Synth. part is written in bass clef with a key signature of one flat (B-flat). It features a repeating eighth-note pattern: G2 (half note), F2 (quarter note), E2 (quarter note), D2 (quarter note), C2 (quarter note), B1 (quarter note), A1 (quarter note), and G1 (half note). The Br. part is in treble clef with a key signature of one flat and contains whole rests for all three measures. The Hm. Org. part consists of two staves in treble clef with a key signature of one flat. The right staff plays a sequence of chords: G2 (half note), A2 (quarter note), B2 (quarter note), and A2 (quarter note). The left staff plays a sequence of chords: G2 (half note), F2 (quarter note), E2 (quarter note), and D2 (quarter note). The piece concludes with a double bar line at the end of measure 42.