

Dark World Dungeon (4)

Composer: Koji Kondo

Game: Legend Of Zelda, The: A Link To The Past

pianogame.org

♩ = 140

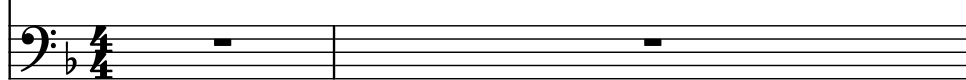
Violins (section), Strings 1



Violins (section), Strings 2



Violoncellos (section), Strings 3



3



5



7



9



11

Vlns.

Vlns.

Vcs.

Measures 11-12. Violins 1 and 2 play eighth-note patterns. Violoncello plays a half note, quarter note, and eighth-note pattern.

13

Vlns.

Vlns.

Vcs.

Measures 13-14. Violins 1 and 2 play eighth-note patterns. Violoncello plays a half note, quarter note, and eighth-note pattern.

15

Vlns.

Vlns.

Vcs.

Measures 15-16. Violins 1 and 2 play eighth-note patterns. Violoncello plays a half note, quarter note, and eighth-note pattern.

17

Vlns.

Vlns.

Vcs.

Measures 17-18. Violins 1 and 2 play eighth-note patterns. Violoncello plays a half note, quarter note, and eighth-note pattern.

19

Vlns.

Vlns.

Vcs.

Measures 19-20. Violins 1 and 2 play eighth-note patterns. Violoncello plays a half note, quarter note, and eighth-note pattern.

21

21

Vlms. 

Vlms. 

Vcs. 

23

23

Vlms. 

Vlms. 

Vcs. 

25

25

Vlms. 

Vlms. 

Vcs. 

27

27

Vlms. 


Vlms. 

Vcs. 

29

29

Vlms. 

Vlms. 

Vcs. 

31

Vlms.

Vlms.

Vcs.

Measure 31: Violins 1 and 2 play a continuous sixteenth-note pattern. Violoncello has a whole rest. Measure 32: Violins 1 and 2 continue the pattern. Violoncello plays a half note.

33

Vlms.

Vlms.

Vcs.

Measure 33: Violins 1 and 2 play a continuous sixteenth-note pattern. Violoncello plays a half note. Measure 34: Violins 1 and 2 continue the pattern. Violoncello plays a half note.

35

Vlms.

Vlms.

Vcs.

Measure 35: Violins 1 and 2 play a continuous sixteenth-note pattern. Violoncello has a whole rest. Measure 36: Violins 1 and 2 continue the pattern. Violoncello plays a half note.

37

Vlms.

Vlms.

Vcs.

Measure 37: Violins 1 and 2 play a continuous sixteenth-note pattern. Violoncello plays a half note. Measure 38: Violins 1 and 2 continue the pattern. Violoncello plays a half note.

39

Vlms.

Vlms.

Vcs.

Measure 39: Violins 1 and 2 play a continuous sixteenth-note pattern. Violoncello plays a half note. Measure 40: Violins 1 and 2 continue the pattern. Violoncello plays a half note.

41

Vlms.

Vlms.

Vcs.

Measure 41: Violins I and II play eighth-note patterns. Violoncello has a whole rest. Measure 42: Violins I and II continue their patterns. Violoncello plays a half-note triplet.

43

Vlms.

Vlms.

Vcs.

Measure 43: Violins I and II continue their patterns. Violoncello plays a half-note triplet. Measure 44: Violins I and II continue their patterns. Violoncello plays a half-note triplet.

45

Vlms.

Vlms.

Vcs.

Measure 45: Violins I and II continue their patterns. Violoncello plays a half-note triplet. Measure 46: Violins I and II continue their patterns. Violoncello plays a half-note triplet.

47

Vlms.

Vlms.

Vcs.

Measure 47: Violins I and II continue their patterns. Violoncello plays a half-note triplet. Measure 48: Violins I and II continue their patterns. Violoncello plays a half-note triplet.

49

Vlms.

Vlms.

Vcs.

Measure 49: Violins I and II continue their patterns. Violoncello plays a half-note triplet. Measure 50: Violins I and II continue their patterns. Violoncello plays a half-note triplet.

51

Vlms.

Vlms.

Vcs.

Measures 51-52. Violins 1 and 2 play continuous eighth-note patterns. Violoncello has a half note G2 in measure 51 and a half note F#2 in measure 52, with a slur over the two notes.

53

Vlms.

Vlms.

Vcs.

Measures 53-54. Violins 1 and 2 play continuous eighth-note patterns. Violoncello has a half note G2 in measure 53 and a half note F#2 in measure 54, with a slur over the two notes.

55

Vlms.

Vlms.

Vcs.

Measures 55-56. Violins 1 and 2 play continuous eighth-note patterns. Violoncello has a half note G2 in measure 55 and a half note F#2 in measure 56, with a slur over the two notes.

57

Vlms.

Vlms.

Vcs.

Measures 57-58. Violins 1 and 2 play continuous eighth-note patterns. Violoncello has a half note G2 in measure 57 and a half note F#2 in measure 58, with a slur over the two notes.

59

Vlms.

Vlms.

Vcs.

Measures 59-60. Violins 1 and 2 play continuous eighth-note patterns. Violoncello has a half note G2 in measure 59 and a half note F#2 in measure 60, with a slur over the two notes.

61

Vlms.

Vlms.

Vcs.

3

63

Vlms.

Vlms.

Vcs.

3

65

Vlms.

Vlms.

Vcs.

3

67

Vlms.

Vlms.

Vcs.

3

69

Vlms.

Vlms.

Vcs.

3

71

Vlms.

Vlms.

Vcs.



73

Vlms.

Vlms.

Vcs.



75

Vlms.

Vlms.

Vcs.

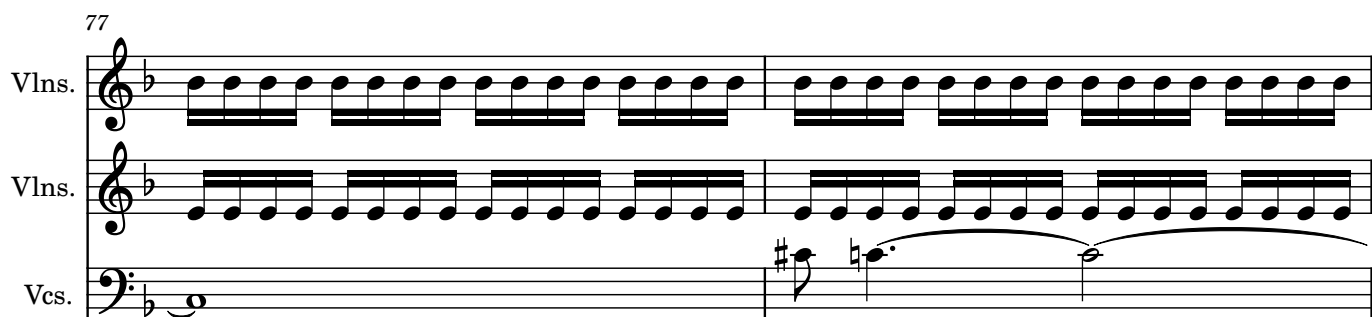


77

Vlms.

Vlms.

Vcs.



79

Vlms.

Vlms.

Vcs.



81

Vlms.

Vlms.

Vcs.

Violins I and II play continuous eighth-note patterns. Violoncello has a whole note chord at the start of measure 81 and another at the start of measure 82, both marked with a fermata.

83

Vlms.

Vlms.

Vcs.

Violins I and II play continuous eighth-note patterns. Violoncello has a whole note chord at the start of measure 83, rests in measure 84, and then plays a triplet of eighth notes in measure 85.

85

Vlms.

Vlms.

Vcs.

Violins I and II play continuous eighth-note patterns. Violoncello plays a half note in measure 85, a quarter note in measure 86, and then a half note in measure 87.

87

Vlms.

Vlms.

Vcs.

Violins I and II play continuous eighth-note patterns. Violoncello has a whole note chord at the start of measure 87, marked with a fermata.