

Boss (GS)

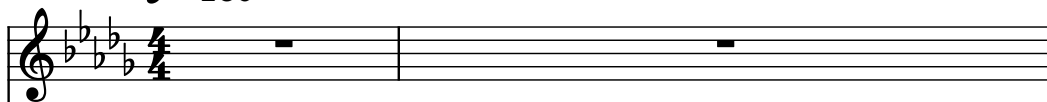
Composer: Kenji Ito

Game: Romancing SaGa 3 (Japan)

pianogame.org

♩ = 160

Violin, Slow Violin (GS)



Bass Guitar, Slap Bass



Violins (section), Strings



3

Vln.



B. Guit.



Vlns.



5

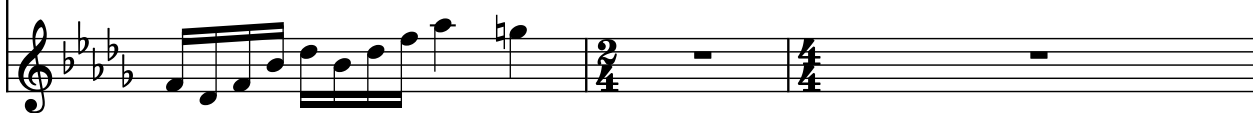
Vln.



B. Guit.



Vlns.



8

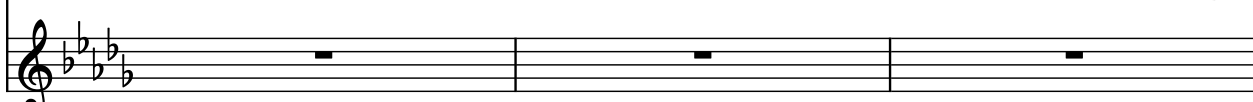
Vln.



B. Guit.

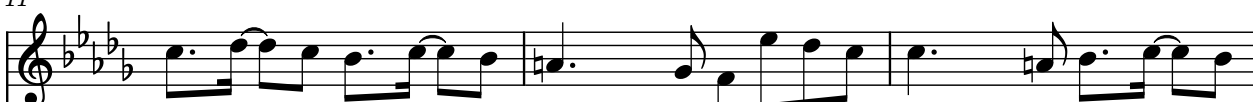


Vlns.



11

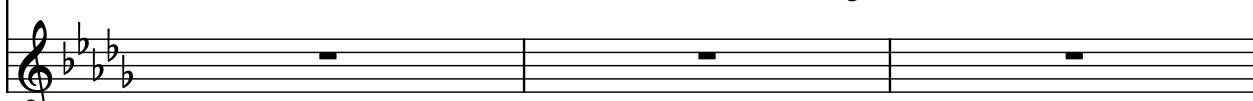
Vln.



B. Guit.



Vlns.



14

Vln.

B. Guit.

Vlns.

17

Vln.

B. Guit.

Vlns.

20

Vln.

B. Guit.

Vlns.

This musical score segment contains measures 20 through 23. It is written for three instruments: Violin (Vln.), Bass Guitar (B. Guit.), and Violoncello (Vlns.). The key signature is E-flat major (three flats: B-flat, E-flat, A-flat). The time signature is 4/4. Measure 20 features a whole rest for the Violin and Violoncello, while the Bass Guitar plays a half note E-flat. Measure 21 shows the Violin and Violoncello playing a half note G-flat, and the Bass Guitar playing a half note E-flat. Measure 22 has the Violin and Violoncello playing a half note A-flat, and the Bass Guitar playing a half note E-flat. Measure 23 shows the Violin and Violoncello playing a half note B-flat, and the Bass Guitar playing a half note E-flat.

23

Vln.

B. Guit.

Vlns.

26

Vln.

B. Guit.

Vlns.

29

Vln.

B. Guit.

Vlms.

Measures 29-31: Vln. is silent. B. Guit. plays a steady eighth-note pattern. Vlms. plays a melodic line with eighth and sixteenth notes.

32

Vln.

B. Guit.

Vlms.

Measures 32-34: Vln. is silent. B. Guit. continues the eighth-note pattern. Vlms. plays a more complex melodic line with sixteenth notes and rests.

35

Vln.

B. Guit.

Vlms.

Measures 35-37: Vln. plays a melodic line with eighth and sixteenth notes. B. Guit. continues the eighth-note pattern. Vlms. is silent.

38

Vln.

B. Guit.

Vlms.

Measures 38-40: Vln. plays a melodic line with eighth and sixteenth notes. B. Guit. continues the eighth-note pattern. Vlms. is silent.

41

Vln.

B. Guit.

Vlms.

Measures 41-43: Vln. plays a melodic line with eighth and sixteenth notes. B. Guit. continues the eighth-note pattern. Vlms. plays a melodic line with eighth and sixteenth notes.

44

Vln.

B. Guit.

Vlms.

47

Vln.

B. Guit.

Vlms.

50

Vln.

B. Guit.

Vlms.

54

Vln.

B. Guit.

Vlms.

57

Vln.

B. Guit.

Vlms.

60

Vln.

B. Guit.

Vlns.

Measures 60-62: Vln. is silent. B. Guit. plays a steady eighth-note pattern. Vlns. play a sixteenth-note arpeggiated pattern.

63

Vln.

B. Guit.

Vlns.

Measures 63-65: Vln. enters with a melodic line. B. Guit. continues the eighth-note pattern. Vlns. are silent.

66

Vln.

B. Guit.

Vlns.

Measures 66-68: Vln. plays a melodic line with a long note. B. Guit. continues the eighth-note pattern. Vlns. are silent.

69

Vln.

B. Guit.

Vlns.

Measures 69-71: Vln. continues the melodic line. B. Guit. continues the eighth-note pattern. Vlns. enter with a sixteenth-note arpeggiated pattern.

72

Vln.

B. Guit.

Vlns.

Measures 72-74: Vln. continues the melodic line. B. Guit. continues the eighth-note pattern. Vlns. are silent.

75

Vln.

B. Guit.

Vlms.

78

Vln.

B. Guit.

Vlms.

82

Vln.

B. Guit.

Vlms.

85

Vln.

B. Guit.

Vlms.

88

Vln.

B. Guit.

Vlms.

90

Vln.

B. Guit.

Vlins.

Measures 90-92. Vln. (Violin) has a whole rest in measure 90, then plays eighth notes in 91 and 92. B. Guit. (Bass Guitar) plays a continuous eighth-note pattern. Vlins. (Violins) play eighth notes in measure 90, then have whole rests in 91 and 92.

93

Vln.

B. Guit.

Vlins.

Measures 93-95. Vln. (Violin) plays eighth notes in 93, then a half note in 94, and eighth notes in 95. B. Guit. (Bass Guitar) plays a continuous eighth-note pattern. Vlins. (Violins) have whole rests in measures 93, 94, and 95.

96

Vln.

B. Guit.

Vlins.

Measures 96-98. Vln. (Violin) plays eighth notes in 96, then a half note in 97, and eighth notes in 98. B. Guit. (Bass Guitar) plays a continuous eighth-note pattern. Vlins. (Violins) have whole rests in measures 96, 97, and 98.

99

Vln.

B. Guit.

Vlins.

Measures 99-101. Vln. (Violin) has a whole rest in measure 99, then plays eighth notes in 100 and 101. B. Guit. (Bass Guitar) plays a continuous eighth-note pattern. Vlins. (Violins) have whole rests in measures 99, 100, and 101.

102

Vln.

B. Guit.

Vlins.

Measures 102-104. Vln. (Violin) plays eighth notes in 102, then a half note in 103, and eighth notes in 104. B. Guit. (Bass Guitar) plays a continuous eighth-note pattern. Vlins. (Violins) have whole rests in measures 102, 103, and 104.

105

Vln.

B. Guit.

Vlms.

Measures 105-107. The Violin (Vln.) part features a melodic line starting on a half note, followed by a slur over measures 105-106. The Bass Guitar (B. Guit.) part has a steady eighth-note pattern. The Violoncello (Vlms.) part has a melodic line with a slur over measures 105-106.

108

Vln.

B. Guit.

Vlms.

Measures 108-110. The Violin (Vln.) part has a whole rest. The Bass Guitar (B. Guit.) part has a steady eighth-note pattern. The Violoncello (Vlms.) part has a melodic line with a slur over measures 108-110.

111

Vln.

B. Guit.

Vlms.

Measures 111-113. The Violin (Vln.) part has a whole rest. The Bass Guitar (B. Guit.) part has a melodic line with a slur over measures 111-113. The Violoncello (Vlms.) part has a melodic line with a slur over measures 111-113.

114

Vln.

B. Guit.

Vlms.

Measures 114-116. The Violin (Vln.) part has a whole rest. The Bass Guitar (B. Guit.) part has a melodic line with a slur over measures 114-116. The Violoncello (Vlms.) part has a melodic line with a slur over measures 114-116.

116

Vln.

B. Guit.

Vlms.

Measures 116-118. The Violin (Vln.) part has a whole rest. The Bass Guitar (B. Guit.) part has a melodic line with a slur over measures 116-118. The Violoncello (Vlms.) part has a melodic line with a slur over measures 116-118.

118

