

# Control (2)

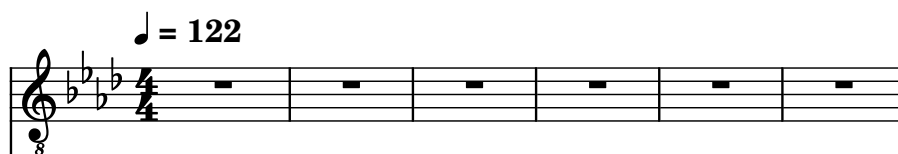
Composer: Grant Kirkhope

Game: GoldenEye 007

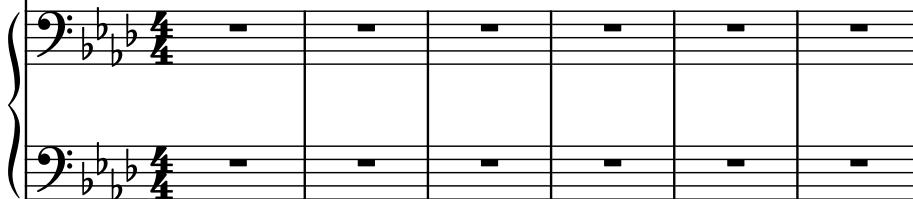
[pianogame.org](http://pianogame.org)

♩ = 122

Electric Guitar, Distortion Theme



Saw Synthesizer, Halo Pad Theme



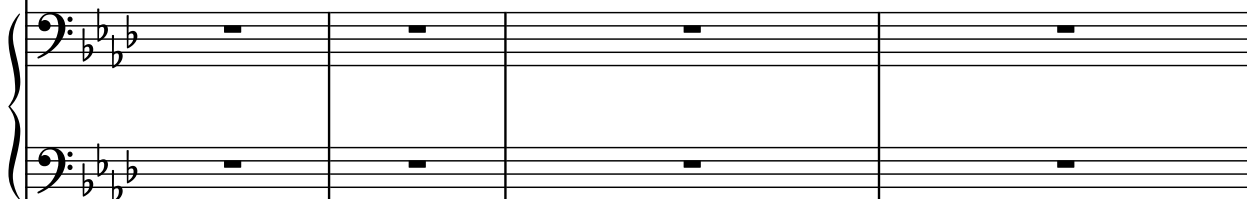
Pad Synthesizer, PolySynth Theme



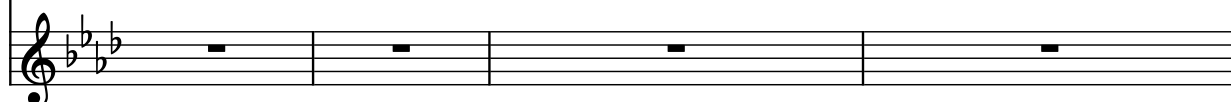
El. Guit.



Synth.



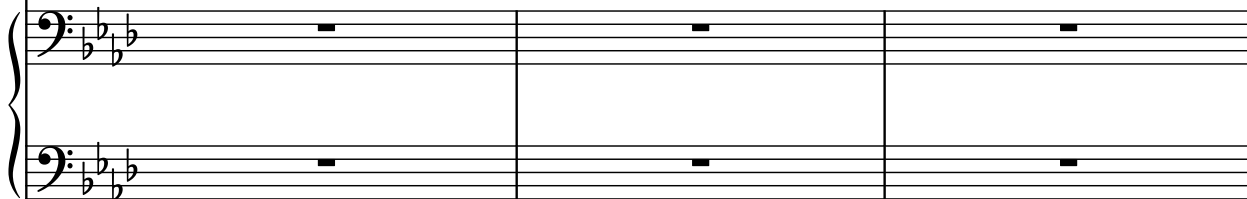
Synth.



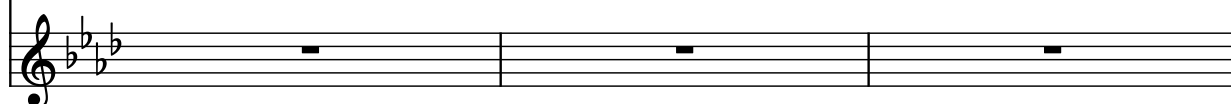
El. Guit.



Synth.



Synth.



14

El. Guit.

Synth.

Synth.

Measure 14: El. Guit. has a complex melody with many beamed sixteenth and thirty-second notes. Synth. parts are mostly silent.

Measure 15: El. Guit. continues the complex melody. Synth. parts are mostly silent.

Measure 16: El. Guit. continues the complex melody. Synth. parts are mostly silent.

Measure 17: El. Guit. continues the complex melody. Synth. parts are mostly silent.

Measure 18: El. Guit. continues the complex melody. Synth. parts are mostly silent.

19

El. Guit.

Synth.

Synth.

Measure 19: El. Guit. has a more rhythmic, syncopated melody. Synth. parts have sustained notes in the lower part.

Measure 20: El. Guit. continues the rhythmic melody. Synth. parts have sustained notes in the lower part.

Measure 21: El. Guit. continues the rhythmic melody. Synth. parts have sustained notes in the lower part.

Measure 22: El. Guit. continues the rhythmic melody. Synth. parts have sustained notes in the lower part.

23

El. Guit.

Synth.

Synth.

Measure 23: El. Guit. has a rhythmic melody with syncopation. Synth. parts have sustained notes in the lower part.

Measure 24: El. Guit. continues the rhythmic melody. Synth. parts have sustained notes in the lower part.

Measure 25: El. Guit. continues the rhythmic melody. Synth. parts have sustained notes in the lower part.

26

El. Guit.

Synth.

Synth.

31

El. Guit.

Synth.

Synth.

35

El. Guit.

Synth.

Synth.

39

El. Guit.

Synth.

Synth.

8

42

El. Guit.

Synth.

Synth.

8

45

El. Guit.

Synth.

Synth.

8

48

El. Guit.

Synth.

Synth.

50

El. Guit.

Synth.

Synth.

53

El. Guit.

Synth.

Synth.

56

El. Guit.

Synth.

Synth.

58

El. Guit.

Synth.

Synth.



61

El. Guit.

Synth.

Synth.



64

El. Guit.

Synth.

Synth.



66

El. Guit.

Synth.

Synth.

8

69

El. Guit.

Synth.

Synth.

8

72

El. Guit.

Synth.

Synth.

8



77

El. Guit.

Synth.

Synth.

Measures 77-79: The Electric Guitar part plays a rhythmic pattern of eighth notes and quarter notes. The Synth parts are silent, indicated by whole rests.

80

El. Guit.

Synth.

Synth.

Measures 80-82: The Electric Guitar part continues the rhythmic pattern. The Synth parts remain silent with whole rests.

83

El. Guit.

Synth.

Synth.

Measures 83-88: The Electric Guitar part plays a short sequence of notes in measures 83 and 84, then rests. The Synth parts are silent until measure 85, where the top Synth part begins a sequence of whole notes in the bass clef. The bottom Synth parts remain silent.

89

El. Guit.

Synth.

Synth.

92

El. Guit.

Synth.

Synth.

95

El. Guit.

Synth.

Synth.

101

El. Guit.

Synth.

Synth.

105

El. Guit.

Synth.

Synth.

108

El. Guit.

Synth.

Synth.

110

El. Guit.

Synth.

Synth.

8

113

El. Guit.

Synth.

Synth.

8

116

El. Guit.

Synth.

Synth.

8

118

El. Guit.

Synth.

Synth.

Measures 118-120: The Electric Guitar part is silent. The first Synth part plays a melodic line with eighth notes and rests. The second Synth part plays a rhythmic accompaniment of eighth notes. The third Synth part is silent.

121

El. Guit.

Synth.

Synth.

Measures 121-123: The Electric Guitar part is silent. The first Synth part continues the melodic line. The second Synth part continues the rhythmic accompaniment. The third Synth part plays a sustained bass line with long notes.

124

El. Guit.

Synth.

Synth.

Measures 124-125: The Electric Guitar part is silent. The first Synth part continues the melodic line. The second Synth part continues the rhythmic accompaniment. The third Synth part plays a sustained bass line with long notes.

126

El. Guit.

Synth.

Synth.

Measures 126-128: The Electric Guitar part is silent. The first Synth part continues the melodic line. The second Synth part continues the rhythmic accompaniment. The third Synth part plays a sustained bass line with long notes.

129

El. Guit.

Synth.

Synth.

132

El. Guit.

Synth.

Synth.

134

El. Guit.

Synth.

Synth.

137

El. Guit.

Synth.

Synth.

8

140

El. Guit.

Synth.

Synth.

8