

# Title

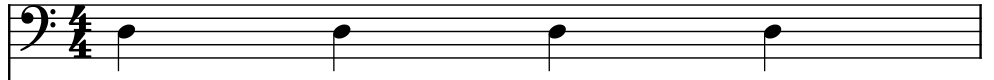
Composer: Hitoshi Sakimoto

Game: Midnight Resistance

[pianogame.org](http://pianogame.org)

♩ = 120

Bass Synthesizer, RubberBass



Bass Synthesizer, SynthBass1

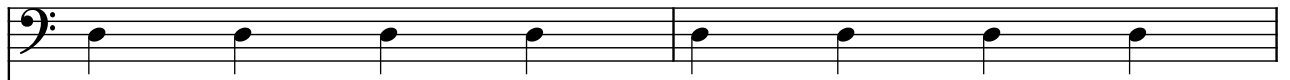


Saw Synthesizer, HeavySynth



2

Synth.



Synth.

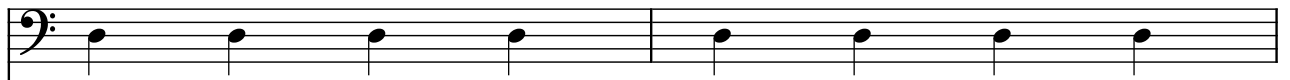


Synth.



4

Synth.



Synth.

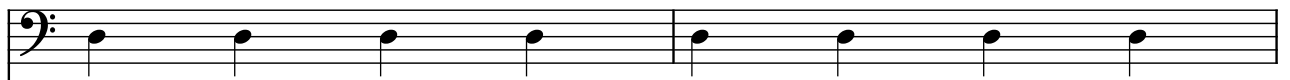


Synth.



6

Synth.



Synth.



Synth.



8

Synth. 1 (bass clef) plays a simple melody of quarter notes: C2, D2, E2, F2, G2, A2, B2, C3.

Synth. 2 (bass clef) plays a complex, fast-moving melody with many beamed notes, primarily in the lower register.

Synth. 3 (treble clef) plays a simple melody of quarter notes: C4, D4, E4, F4, G4, A4, B4, C5. The key signature changes to one flat (Bb) and the time signature changes to 3/4 after the second measure.

10

Three staves of music, each labeled 'Synth.' on the left. The top staff features a simple melody of quarter notes. The middle staff features a complex, fast-moving melody with many beamed notes. The bottom staff features a steady eighth-note accompaniment.

12

Three staves of musical notation, all in bass clef. The top staff is labeled 'Synth.' and contains a simple melody. The middle staff is also labeled 'Synth.' and contains a complex, fast-moving melody. The bottom staff is labeled 'Synth.' and contains a simple melody.

14

Three staves of musical notation, each labeled 'Synth.' on the left. The top staff features a simple melody of quarter notes. The middle staff contains a complex texture with many beamed sixteenth notes. The bottom staff has a steady eighth-note accompaniment.

16

Synth. 

Synth. 

Synth. 

18

Synth. 

Synth. 

Synth. 

20

Synth. 

Synth. 

Synth. 

22

Synth. 

Synth. 

Synth. 

24

Synth.

Synth.

Synth.

This system contains measures 24 and 25. The top staff (labeled 'Synth.') has a single melodic line with eighth notes. The middle staff (labeled 'Synth.') features a dense, continuous sixteenth-note arpeggiated texture. The bottom staff (labeled 'Synth.') has a single melodic line with eighth notes. The key signature changes from one sharp (F#) to two sharps (F# and C#) between measures 24 and 25.

26

Synth.

Synth.

Synth.

This system contains measures 26 and 27. The top staff (labeled 'Synth.') has a single melodic line with eighth notes. The middle staff (labeled 'Synth.') features a dense, continuous sixteenth-note arpeggiated texture. The bottom staff (labeled 'Synth.') has a single melodic line with eighth notes. The key signature changes from two sharps (F# and C#) to one flat (Bb) between measures 26 and 27.

28

Synth.

Synth.

Synth.

This system contains measures 28 and 29. The top staff (labeled 'Synth.') has a single melodic line with eighth notes. The middle staff (labeled 'Synth.') features a dense, continuous sixteenth-note arpeggiated texture. The bottom staff (labeled 'Synth.') has a single melodic line with eighth notes. The key signature changes from one flat (Bb) to two flats (Bb and F) between measures 28 and 29.

30

Synth.

Synth.

Synth.

This system contains measures 30 and 31. The top staff (labeled 'Synth.') has a single melodic line with eighth notes. The middle staff (labeled 'Synth.') features a dense, continuous sixteenth-note arpeggiated texture. The bottom staff (labeled 'Synth.') has a single melodic line with eighth notes. The key signature changes from two flats (Bb and F) to one sharp (F#) between measures 30 and 31.

32

Synth.

Synth.

Synth.

35

Synth.

Synth.

Synth.

37

Synth.

Synth.

Synth.

39

Synth.

Synth.

Synth.

41

Synth.  

Synth.  

Synth.  

Detailed description: This system contains measures 41 and 42. The first staff (labeled Synth.) has a single note in measure 41 and a half-note pair in measure 42. The second staff (labeled Synth.) has a continuous eighth-note pattern in measure 41 and a similar pattern with a flat in measure 42. The third staff (labeled Synth.) has a continuous eighth-note pattern in measure 41 and a similar pattern with a flat in measure 42.

43

Synth.  

Synth.  

Synth.  

Detailed description: This system contains measures 43 and 44. The first staff (labeled Synth.) has a single note in measure 43 and a half-note pair in measure 44. The second staff (labeled Synth.) has a continuous eighth-note pattern in measure 43 and a similar pattern with a flat in measure 44. The third staff (labeled Synth.) has a continuous eighth-note pattern in measure 43 and a similar pattern with a flat in measure 44.

45

Synth.  

Synth.  

Synth.  

Detailed description: This system contains measures 45 and 46. The first staff (labeled Synth.) has a single note in measure 45 and a half-note pair in measure 46. The second staff (labeled Synth.) has a continuous eighth-note pattern in measure 45 and a similar pattern with a flat in measure 46. The third staff (labeled Synth.) has a continuous eighth-note pattern in measure 45 and a similar pattern with a flat in measure 46.

47

Synth.  

Synth.  

Synth.  

Detailed description: This system contains measures 47 and 48. The first staff (labeled Synth.) has a single note in measure 47 and a half-note pair in measure 48. The second staff (labeled Synth.) has a continuous eighth-note pattern in measure 47 and a similar pattern with a flat in measure 48. The third staff (labeled Synth.) has a continuous eighth-note pattern in measure 47 and a similar pattern with a flat in measure 48.

49

Synth.

Three staves of musical notation. The top staff (labeled 'Synth.') contains a single melodic line of eighth notes. The middle staff contains a dense, fast-moving accompaniment of sixteenth notes. The bottom staff contains a single melodic line of eighth notes, often in sync with the top staff.

51

Synth.

Three staves of musical notation. The top staff (labeled 'Synth.') contains a single melodic line of eighth notes. The middle staff contains a dense, fast-moving accompaniment of sixteenth notes. The bottom staff contains a single melodic line of eighth notes, often in sync with the top staff.

53

Synth.

Three staves of musical notation. The top staff (labeled 'Synth.') contains a single melodic line of eighth notes. The middle staff contains a dense, fast-moving accompaniment of sixteenth notes. The bottom staff contains a single melodic line of eighth notes, often in sync with the top staff.

55

Synth.

Three staves of musical notation. The top staff (labeled 'Synth.') contains a single melodic line of eighth notes, with a key signature change to one sharp (F#) visible at the start of the second measure. The middle staff contains a dense, fast-moving accompaniment of sixteenth notes, also reflecting the key change. The bottom staff contains a single melodic line of eighth notes, often in sync with the top staff.



57

Synth.

Synth.

Synth.

59

Synth.

Synth.

Synth.

61

Synth.

Synth.

Synth.

63

Synth.

Synth.

Synth.