

# **The Prelude (Remix)**

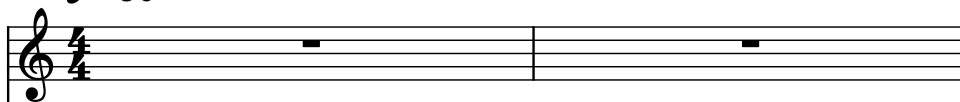
Composer: Nobuo Uematsu

Game: Final Fantasy II

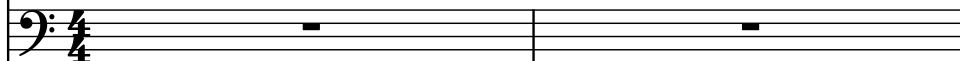
[pianogame.org](http://pianogame.org)

♩ = 90

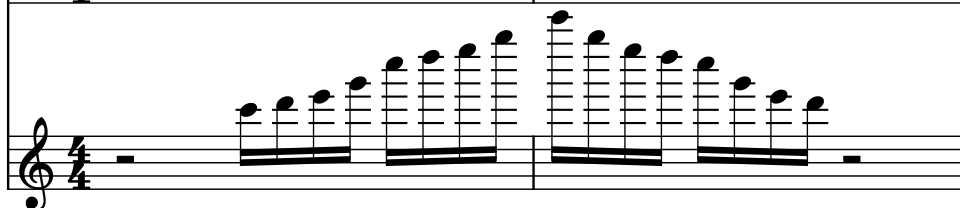
Violins (section), Strings.



Contrabasses (section), Strings.



Harp, Harp.

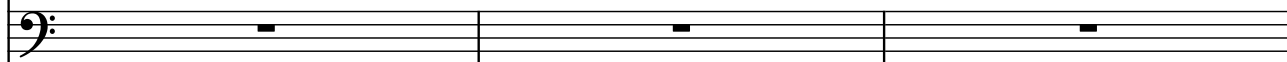


3

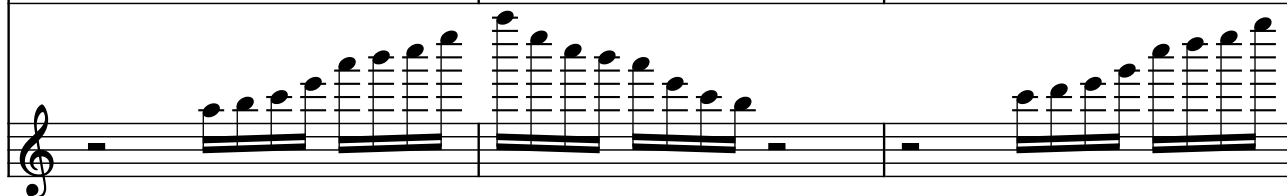
Vlns.



Cbs.

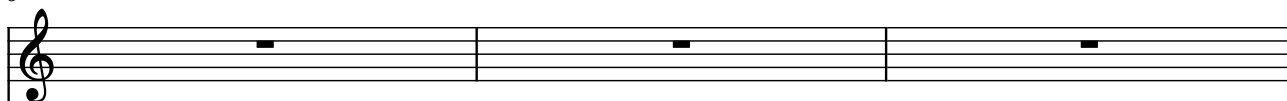


Hrp.

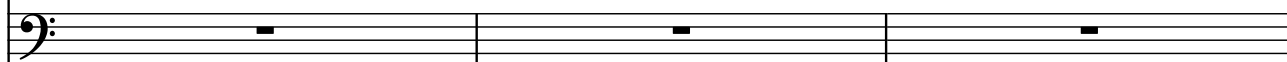


6

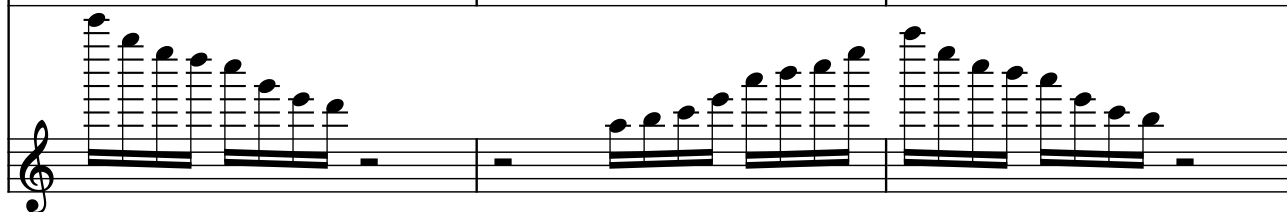
Vlns.



Cbs.

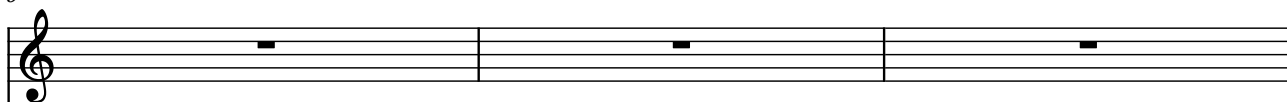


Hrp.

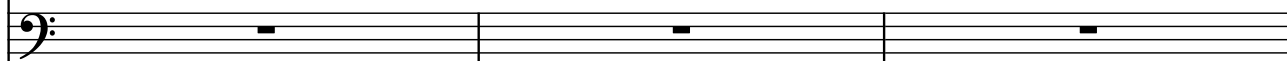


9

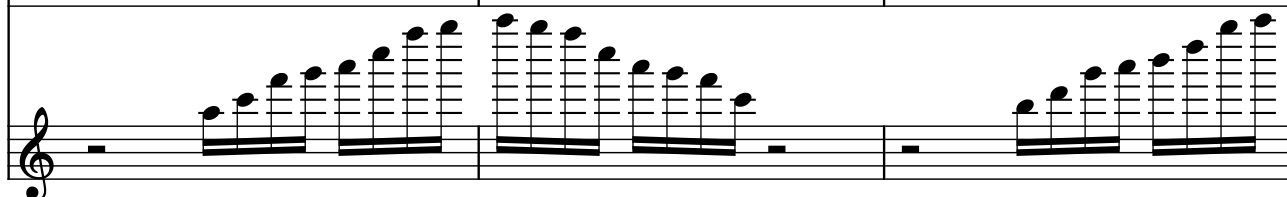
Vlns.



Cbs.



Hrp.



12

Vlns.

Cbs.

Hrp.

15

Vlns.

Cbs.

Hrp.

18

Vlns.

Cbs.

Hrp.

21

Vlns.

Cbs.

Hrp.

Measures 21-23. Violins play a melodic line with a long note in measure 21 and a half note in measure 22. Cellos play a low, sustained note with a long note in measure 21 and a half note in measure 22. Harp plays a series of ascending and descending arpeggiated chords in measures 21 and 22, and a similar pattern in measure 23.

24

Vlns.

Cbs.

Hrp.

Measures 24-26. Violins play a melodic line with a long note in measure 24 and a half note in measure 25. Cellos play a low, sustained note with a long note in measure 24 and a half note in measure 25. Harp plays a series of ascending and descending arpeggiated chords in measures 24 and 25, and a similar pattern in measure 26.

27

Vlns.

Cbs.

Hrp.

Measures 27-29. Violins play a melodic line with a long note in measure 27 and a half note in measure 28. Cellos play a low, sustained note with a long note in measure 27 and a half note in measure 28. Harp plays a series of ascending and descending arpeggiated chords in measures 27 and 28, and a similar pattern in measure 29.

30

Vlns.

Cbs.

Hrp.

Violins (Vlns.) play a melodic line starting with a half note (B4) and a dotted half note (D5). Cellos (Cbs.) play a sustained low note (B1) with a half note. Harp (Hrp.) plays a series of ascending and descending arpeggiated chords.

33

Vlns.

Cbs.

Hrp.

Violins (Vlns.) play a sustained note (B4) with a half note. Cellos (Cbs.) play a sustained low note (B1) with a half note. Harp (Hrp.) plays a series of ascending and descending arpeggiated chords.

36

Vlns.

Cbs.

Hrp.

Violins (Vlns.) play a melodic line starting with a half note (B4) and a dotted half note (D5). Cellos (Cbs.) play a sustained low note (B1) with a half note. Harp (Hrp.) plays a series of ascending and descending arpeggiated chords.

39

Vlns.

Cbs.

Hrp.

Violins (Vlns.) play a melodic line starting on a whole note, followed by a series of eighth notes and a final whole note, all under a long slur. Cellos (Cbs.) play a sustained low note (C2) with a slur. Harp (Hrp.) plays a series of ascending and descending arpeggiated chords, creating a shimmering effect.

42

Vlns.

Cbs.

Hrp.

Violins (Vlns.) play a melodic line starting on a whole note, followed by a series of eighth notes and a final whole note, all under a long slur. Cellos (Cbs.) play a sustained low note (C2) with a slur. Harp (Hrp.) plays a series of ascending and descending arpeggiated chords, creating a shimmering effect.

45

Vlns.

Cbs.

Hrp.

Violins (Vlns.) play a melodic line starting on a whole note, followed by a series of eighth notes and a final whole note, all under a long slur. Cellos (Cbs.) play a sustained low note (C2) with a slur. Harp (Hrp.) plays a series of ascending and descending arpeggiated chords, creating a shimmering effect.

48

Vlns.

Cbs.

Hrp.

Violins (Vlns.) play a melody with a long slur over measures 49 and 50. Cellos (Cbs.) play a single note in measure 48, a half note in measure 49, and a half note in measure 50, all under a long slur. Harp (Hrp.) plays a series of chords in measure 48, a series of chords in measure 49, and a series of chords in measure 50.

51

Vlns.

Cbs.

Hrp.

Violins (Vlns.) play a melody with a long slur over measures 51 and 52, and a half note in measure 53. Cellos (Cbs.) play a single note in measure 51, a half note in measure 52, and a half note in measure 53, all under a long slur. Harp (Hrp.) plays a series of chords in measure 51, a series of chords in measure 52, and a series of chords in measure 53.

54

Vlns.

Cbs.

Hrp.

Violins (Vlns.) play a melody with a long slur over measures 54 and 55, and a half note in measure 56. Cellos (Cbs.) play a single note in measure 54, a half note in measure 55, and a half note in measure 56, all under a long slur. Harp (Hrp.) plays a series of chords in measure 54, a series of chords in measure 55, and a series of chords in measure 56.

57

Vlns.

Cbs.

Hrp.

60

Vlrs.

Cbs.

Hrp.

The image shows a musical score for three instruments: Violins (Vlrs.), Cellos (Cbs.), and Harp (Hrp.). The score is written on three staves. The Violins staff is in treble clef, the Cellos staff is in bass clef, and the Harp staff is in treble clef. The music is in 4/4 time. The key signature has one flat (B-flat). The score is numbered 60. The Violins part consists of a series of chords. The Cellos part consists of a series of chords, with a long note in the second measure. The Harp part consists of a series of chords, with a long note in the second measure.

63

Vlns.

Cbs.

Hrp.

The image shows a musical score for measures 63, 64, and 65. The score is for Violins (Vlns.), Cellos (Cbs.), and Harp (Hrp.). Measure 63 features a long, sustained note in the Violins and Cellos, with the Harp playing a series of ascending and then descending notes. Measure 64 continues the sustained notes in the Violins and Cellos, with the Harp playing a series of ascending and then descending notes. Measure 65 features a long, sustained note in the Violins and Cellos, with the Harp playing a series of ascending and then descending notes.