

Island Map - "Welcome To Crocodile Isle" (Fa Remix)

Composer: David Wise

Game: Donkey Kong Country 2

pianogame.org

♩ = 120

♩ = 120

3

5

7

8

9

10

11

12

13

14

15

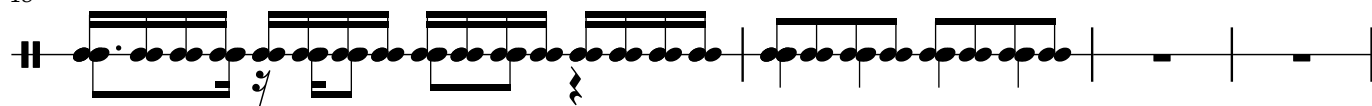
16

17

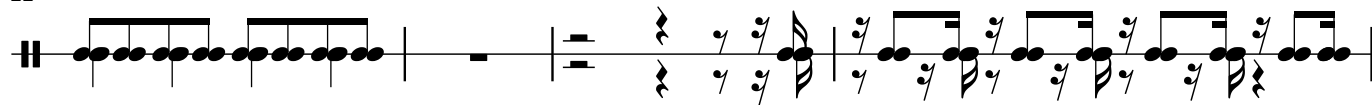
The image displays a musical score for a 17-measure exercise. At the top left, the tempo is indicated as '♩ = 120'. The score is organized into 17 horizontal staves, each numbered from 1 to 17 on the left margin. The notation is written in a single system across all staves. The first staff (measure 1) begins with a treble clef and a 4/4 time signature. The notation includes various rhythmic patterns, such as eighth notes, sixteenth notes, and rests, with some measures containing triplets or sixteenth-note runs. The score is presented in a clean, black-and-white format.

2

18



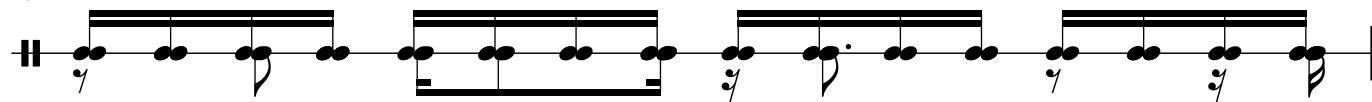
22



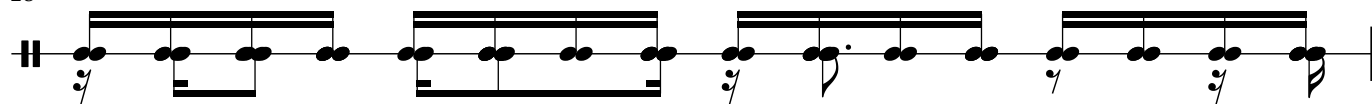
26



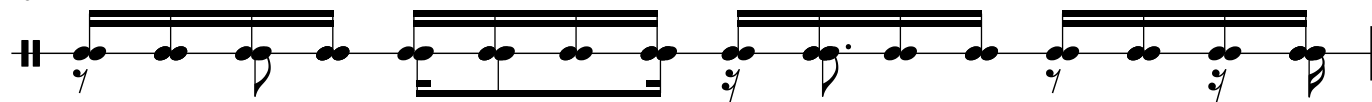
27



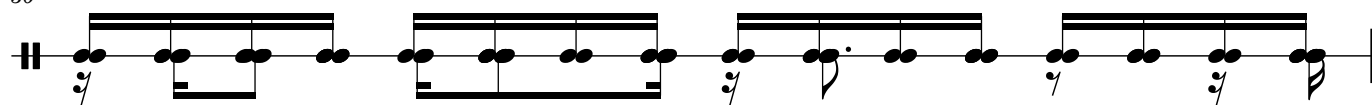
28



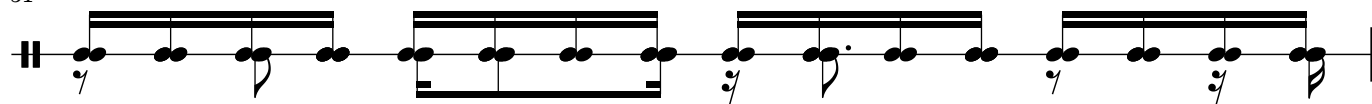
29



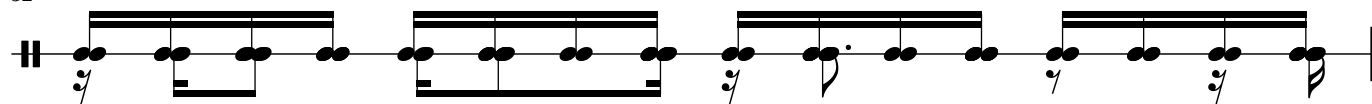
30



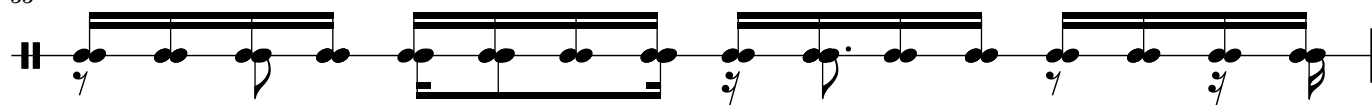
31



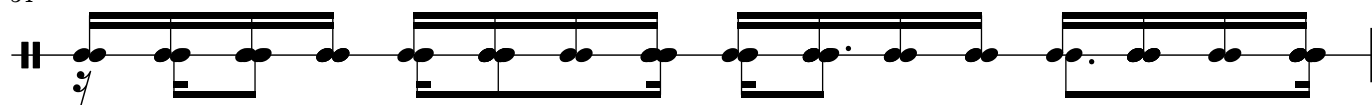
32



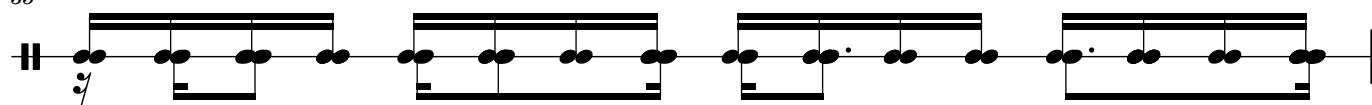
33



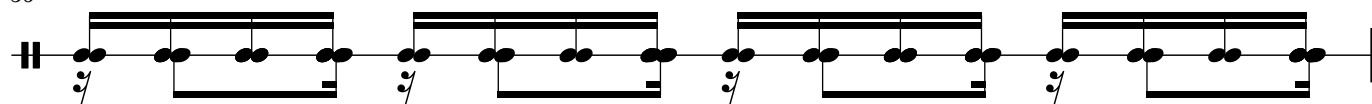
34



35



36



37

38

39

40

41

42

43

44

45

46

47

48