

Normal Duel

Composer: Ichiro Shimakura

Game: Pokémon Trading Card Game

pianogame.org

♩ = 120

Measures 1-3 of the piece. The music is in 4/4 time with a key signature of three sharps (F#, C#, G#). The right hand plays a steady eighth-note accompaniment, while the left hand has rests.

4

Measures 4-7. The musical pattern continues with eighth-note accompaniment in the right hand and rests in the left hand.

8

Measures 8-10. In measure 8, the left hand begins with a half note. In measure 9, it has a half note. In measure 10, the right hand has a triplet of eighth notes, and the left hand has a half note. A treble clef appears at the end of measure 10.

11

Measures 11-13. The right hand continues with eighth-note accompaniment. The left hand has a half note in measure 11, rests in measure 12, and a half note in measure 13. A treble clef is present in measure 11.

14

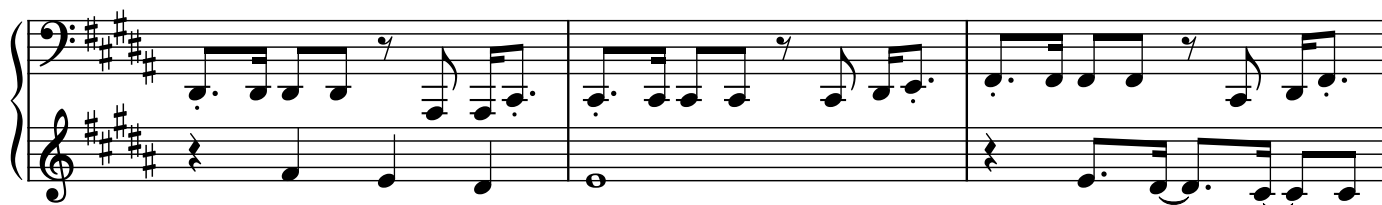
Measures 14-16. In measure 14, the right hand has a triplet of eighth notes. In measure 15, the left hand has a half note. In measure 16, the right hand has a triplet of eighth notes, and the left hand has a half note.

17

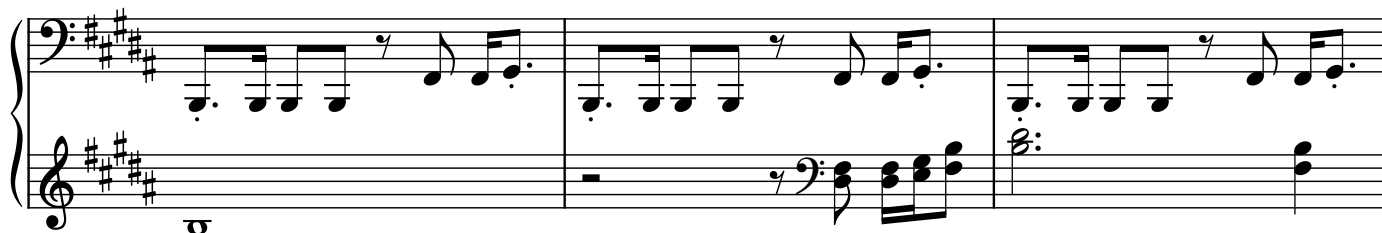
Measures 17-19. The right hand continues with eighth-note accompaniment. The left hand has a half note in measure 17, a half note in measure 18, and a half note in measure 19. A treble clef is present in measure 17.

$\text{♩} = 115$
 $\text{♩} = 116$
 $\text{♩} = 117$
 $\text{♩} = 118$

20



23

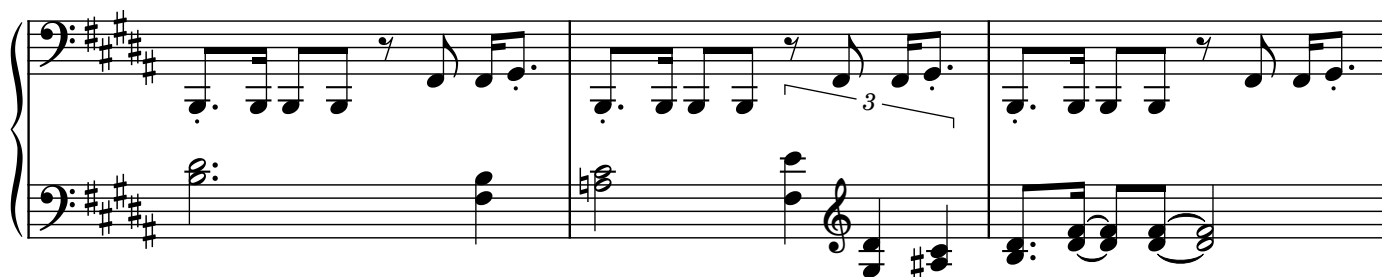
 $\text{♩} = 120$ 

26

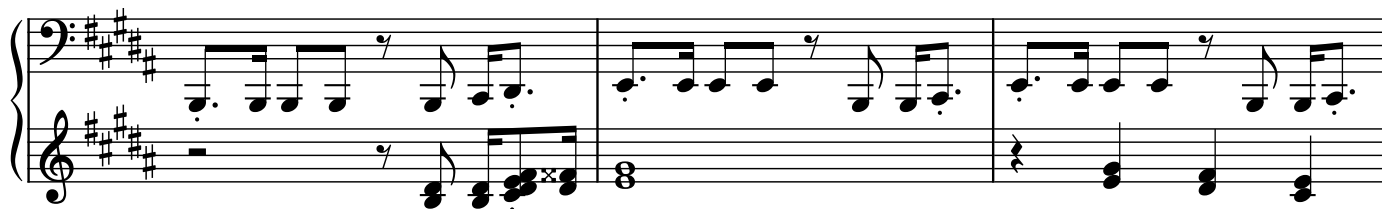


— 3 —

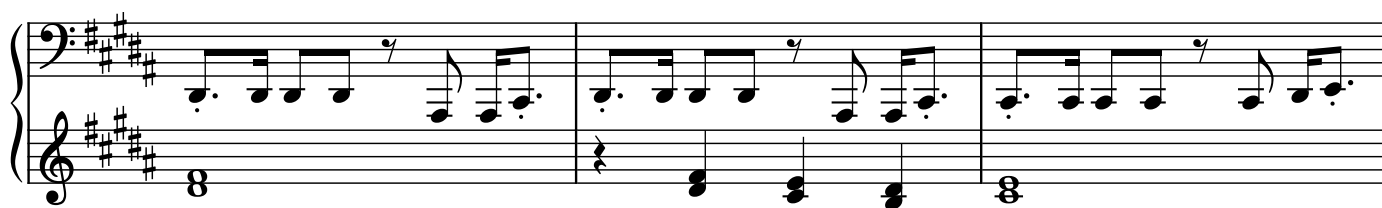
29



32



35



38 $\text{♩} = 118$ $\text{♩} = 117$ $\text{♩} = 116$ $\text{♩} = 115$ $\text{♩} = 120$

41

44 $\text{♩} = 120$ $\text{♩} = 115$ $\text{♩} = 116$ $\text{♩} = 117$ $\text{♩} = 118$ $\text{♩} = 115$ $\text{♩} = 116$ $\text{♩} = 117$ $\text{♩} = 118$

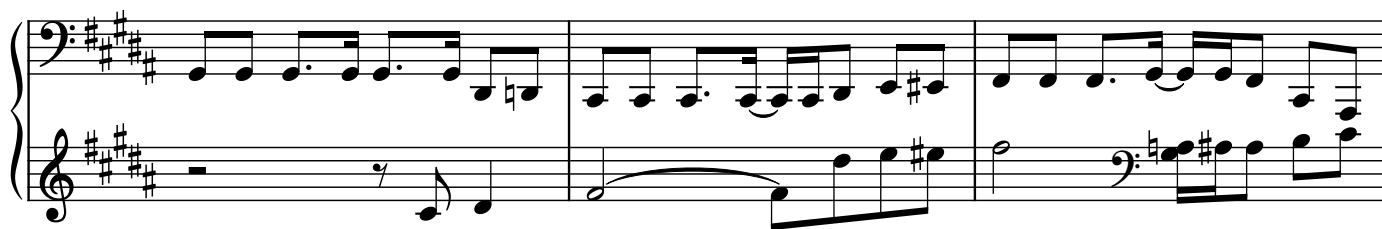
47

50 $\text{♩} = 120$

53

4

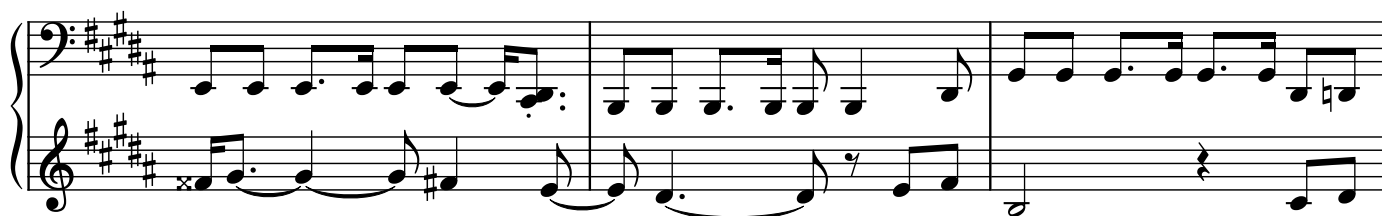
56



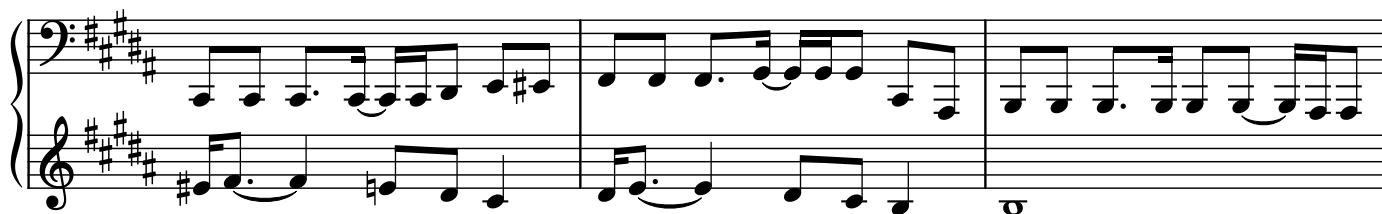
59



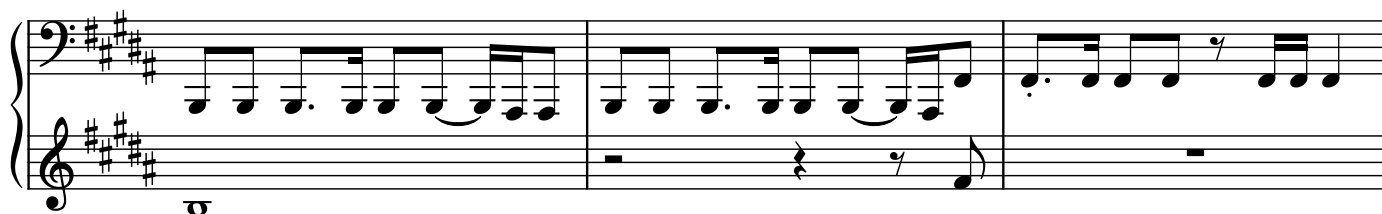
62



65



68

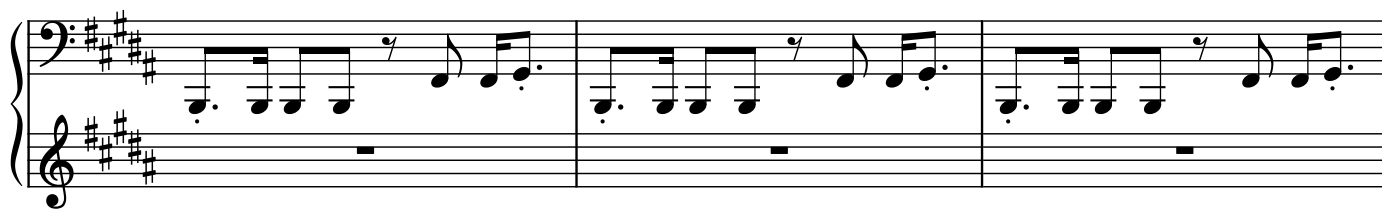


$\text{♩} = 115$
 $\text{♩} = 116$
 $\text{♩} = 117$
 $\text{♩} = 118$

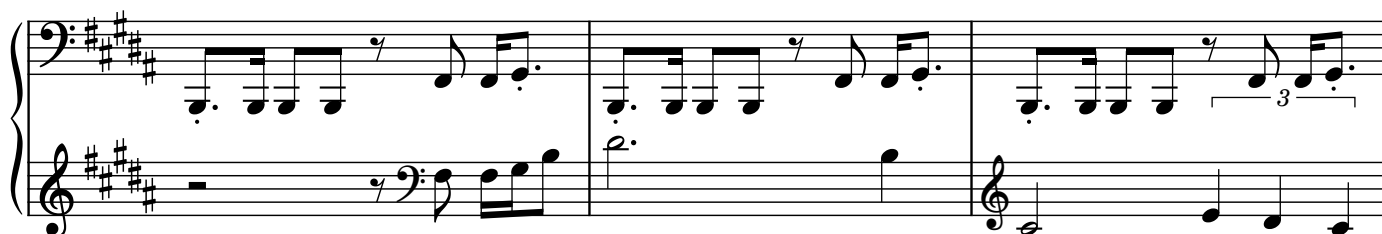
71

 $\text{♩} = 120$ 

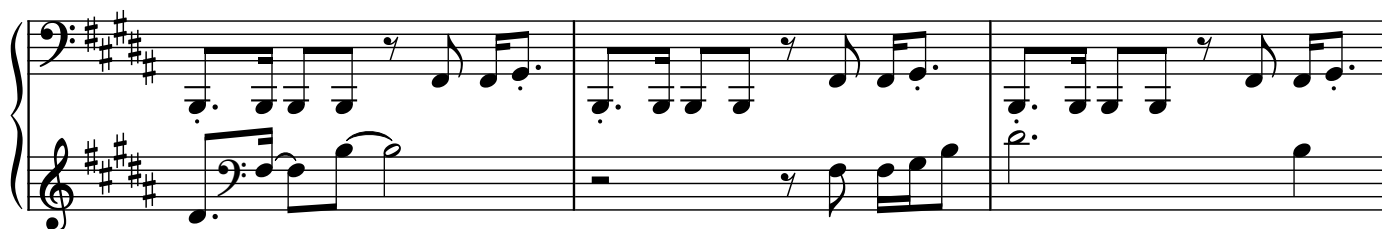
75



78



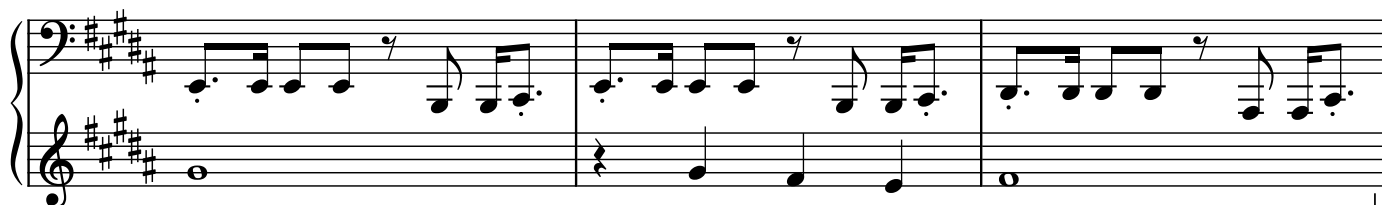
81



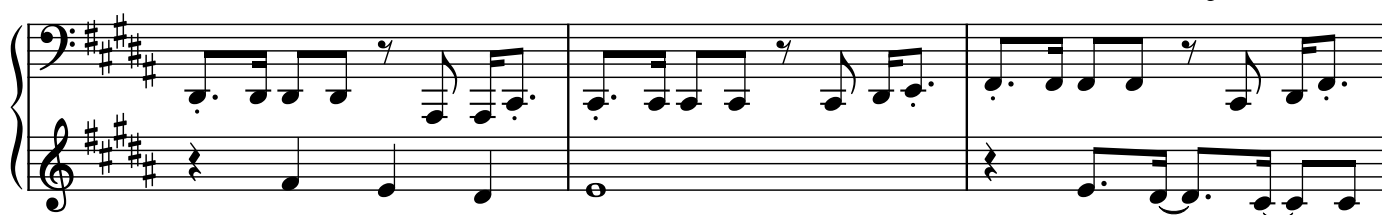
84



87



90



$\text{♩} = 115$
 $\text{♩} = 116$
 $\text{♩} = 117$
 $\text{♩} = 118$

6

93

 $\text{♩} = 120$

Measures 93-95 of a musical score in G major (one sharp). The bass staff features a continuous eighth-note pattern: G4, A4, B4, C5, G4, A4, B4, C5. The treble staff has rests in measures 93 and 94, followed by a half note G4 in measure 95. A fermata is placed over the G4 in measure 95.

96

Measures 96-98. The bass staff continues with the eighth-note pattern. The treble staff has rests in measures 96 and 97, followed by a half note G4 in measure 98. A fermata is placed over the G4 in measure 98.

3

99

Measures 99-101. The bass staff continues with the eighth-note pattern. The treble staff has rests in measures 99 and 100, followed by a half note G4 in measure 101. A fermata is placed over the G4 in measure 101.

102

Measures 102-104. The bass staff continues with the eighth-note pattern. The treble staff has rests in measures 102 and 103, followed by a half note G4 in measure 104. A fermata is placed over the G4 in measure 104.

105

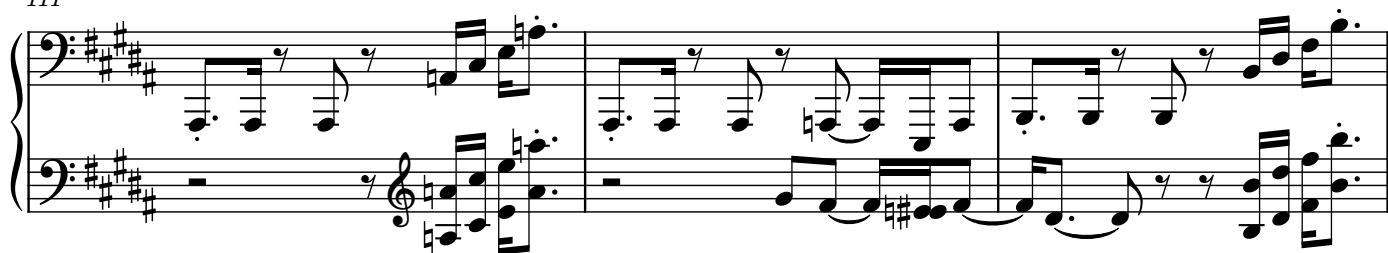
Measures 105-107. The bass staff continues with the eighth-note pattern. The treble staff has rests in measures 105 and 106, followed by a half note G4 in measure 107. A fermata is placed over the G4 in measure 107.

 $\text{♩} = 120$ $\text{♩} = 115$ $\text{♩} = 116$ $\text{♩} = 117$ $\text{♩} = 118$

108

Measures 108-110. The bass staff continues with the eighth-note pattern. The treble staff has rests in measures 108 and 109, followed by a half note G4 in measure 110. A fermata is placed over the G4 in measure 110.

111



114

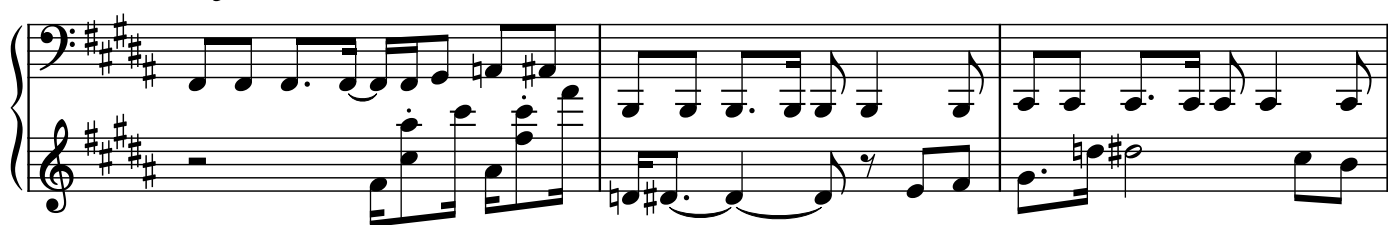


117

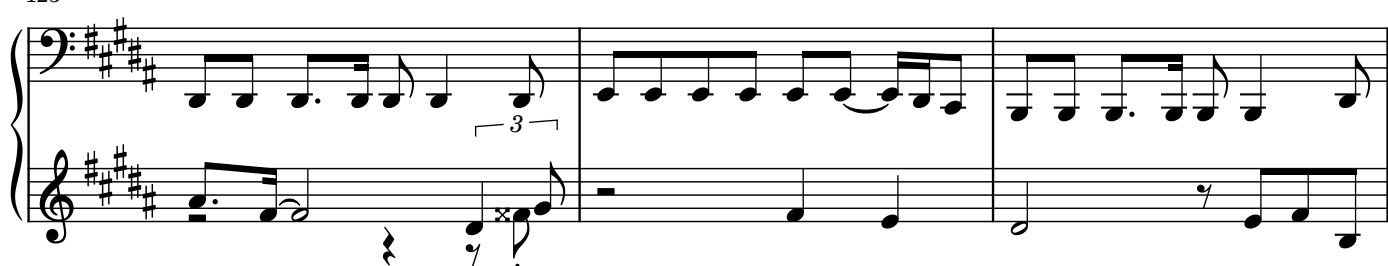


120

♩ = 120



123



126

