

Talking with Fiends

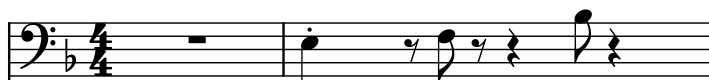
Composer: James Horner

Game: Willow

pianogame.org

♩ = 150

Contrabasses (section), Willow (Talking with fiends)



Violins (section), Sequenced by: Fredrik Klingwall



String Synthesizer, 1999-08-08



3

Cbs.

Vlins.

Synth.

Musical score for Contrabasses (Cbs.), Violins (Vlins.), and String Synthesizer (Synth.) in 4/4 time, key of B-flat major. The score consists of three staves. The Contrabasses staff has a whole rest in the first measure, followed by a half note B-flat, a quarter note G, a quarter note F, and a half note E in the second measure. The Violins staff has a whole rest in the first measure, followed by a half note G, a quarter note F, a quarter note E, and a half note D in the second measure. The String Synthesizer staff has a whole rest in the first measure, followed by a half note B-flat, a quarter note G, a quarter note F, and a half note E in the second measure. The score includes various musical notations such as rests, notes, and triplets.

5

Cbs.

Vlins.

Synth.

Musical score for Contrabasses (Cbs.), Violins (Vlins.), and String Synthesizer (Synth.) in 4/4 time, key of B-flat major. The score consists of three staves. The Contrabasses staff has a whole rest in the first measure, followed by a half note B-flat, a quarter note G, a quarter note F, and a half note E in the second measure. The Violins staff has a whole rest in the first measure, followed by a half note G, a quarter note F, a quarter note E, and a half note D in the second measure. The String Synthesizer staff has a whole rest in the first measure, followed by a half note B-flat, a quarter note G, a quarter note F, and a half note E in the second measure. The score includes various musical notations such as rests, notes, and triplets.

7

Cbs.

Vlns.

Synth.

Measures 7-8 of the musical score. The Cbs. part (bass clef) features a sequence of eighth and quarter notes with a triplet of eighth notes in measure 8. The Vlns. part (treble clef) features a sequence of eighth and quarter notes with a triplet of eighth notes in measure 7. The Synth. part (bass clef) features a sequence of eighth and quarter notes with a triplet of eighth notes in measure 7. The key signature is one flat (Bb).

9

Cbs.

Vlns.

Synth.

Measures 9-10 of the musical score. The Cbs. part (bass clef) features a sequence of eighth and quarter notes with a triplet of eighth notes in measure 9. The Vlns. part (treble clef) features a sequence of eighth and quarter notes with a triplet of eighth notes in measure 9. The Synth. part (bass clef) features a sequence of eighth and quarter notes with a triplet of eighth notes in measure 9. The key signature is one flat (Bb).

11

Cbs.

Vlns.

Synth.

Measures 11-12 of the musical score. The Cbs. part (bass clef) features a sequence of eighth and quarter notes with a triplet of eighth notes in measure 11. The Vlns. part (treble clef) features a sequence of eighth and quarter notes with a triplet of eighth notes in measure 11. The Synth. part (bass clef) features a sequence of eighth and quarter notes with a triplet of eighth notes in measure 11. The key signature is one flat (Bb).