

Cities

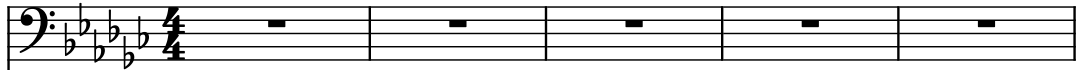
Composer: Mark Miller

Game: Kid Chameleon

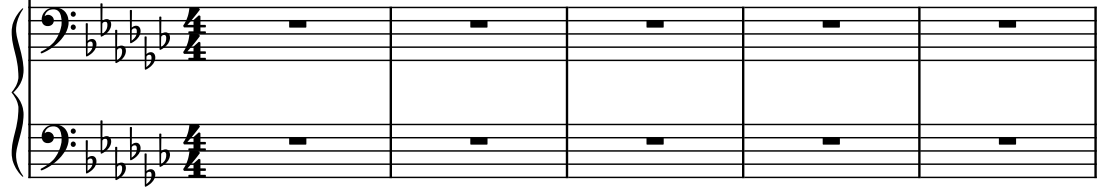
pianogame.org

$\text{♩} = 104$

Contrabass, "Cities"



Clavichord, copyright

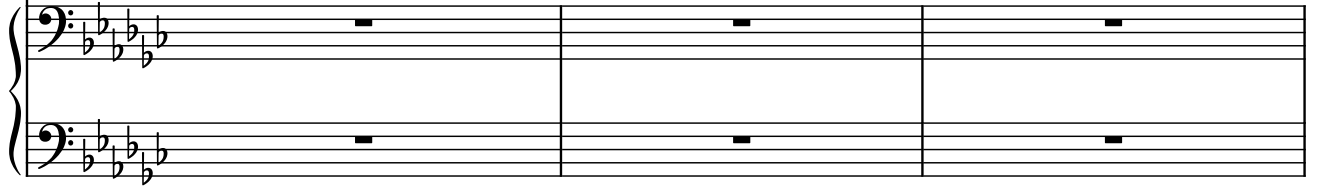


6

Cb.



Cch.



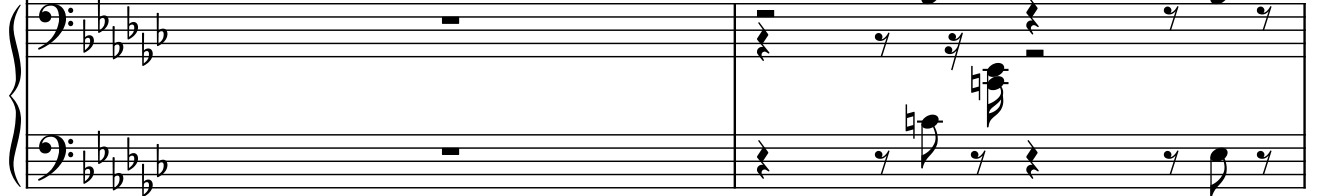
┌── 3 ──┐

9

Cb.



Cch.



┌── 3 ──┐

┌── 3 ──┐

11

Cb.



Cch.



┌── 3 ──┐

┌── 3 ──┐

┌── 3 ──┐

— 3 —

13

Cb.

Cch.

— 3 —

— 3 —

16

Cb.

Cch.

— 3 —

19

Cb.

Cch.

— 3 —

— 3 —

22

Cb.

Cch.

— 3 —

— 3 —

25

Cb.

Cch.

Measures 25-27. The Cb. part features a continuous eighth-note pattern. The Cch. part consists of rests in all three staves.

28

Cb.

Cch.

Measures 28-29. The Cb. part continues with a continuous eighth-note pattern. The Cch. part features a complex rhythmic pattern with triplets in the first two staves and a triplet in the third staff.

30

Cb.

Cch.

Measures 30-32. The Cb. part continues with a continuous eighth-note pattern. The Cch. part features a complex rhythmic pattern with triplets in the first two staves and a triplet in the third staff.

33

Cb.

Cch.

3

3

36

Cb.

Cch.

3

40

Cb.

Cch.

3

3

43

Cb.

Cch.

3

46

Cb.

Cch.

Measures 46-47 of a musical score. The Cb. part (bass clef) features a continuous eighth-note pattern. The Cch. part (grand staff) includes several triplet markings (3) in both the upper and lower staves.

48

Cb.

Cch.

Measures 48-50 of a musical score. The Cb. part continues with eighth-note patterns and includes a triplet marking (3). The Cch. part features various rests and eighth-note patterns, with triplet markings (3) in the lower staff.

51

Cb.

Cch.

Measures 51-53 of a musical score. The Cb. part has a triplet marking (3) in measure 51 and rests in measures 52 and 53. The Cch. part features a complex eighth-note pattern in measure 51, followed by rests in measures 52 and 53, with triplet markings (3) in the lower staff.

54

Cb.

Cch.

58

Cb.

Cch.

61

Cb.

Cch.

64

Cb.

Cch.

66

Cb.

Cch.

This musical score snippet shows measures 66 through 69 for two instruments: Cb. (Contrabass) and Cch. (Cello). The key signature is three flats (B-flat, E-flat, A-flat). Measure 66 features a triplet of eighth notes in the Cb. staff and a triplet of eighth notes in the Cch. staff. Measure 67 continues the triplet in the Cb. staff and has a whole note in the Cch. staff. Measure 68 has a quarter note in the Cb. staff and a half note in the Cch. staff. Measure 69 has a quarter note in the Cb. staff and a half note in the Cch. staff. The score ends with a double bar line.

3

3

3