

# Battle with Shadow Queen - True Form

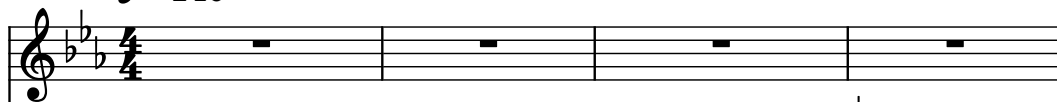
Composer: Yuka Tsujiyoko

Game: Paper Mario: The Thousand-Year Door

[pianogame.org](http://pianogame.org)

♩ = 140

Percussive Organ, Staff



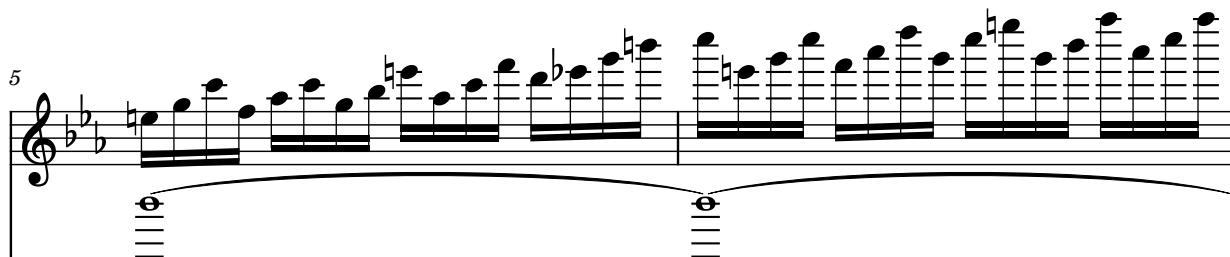
Viola, Staff-1



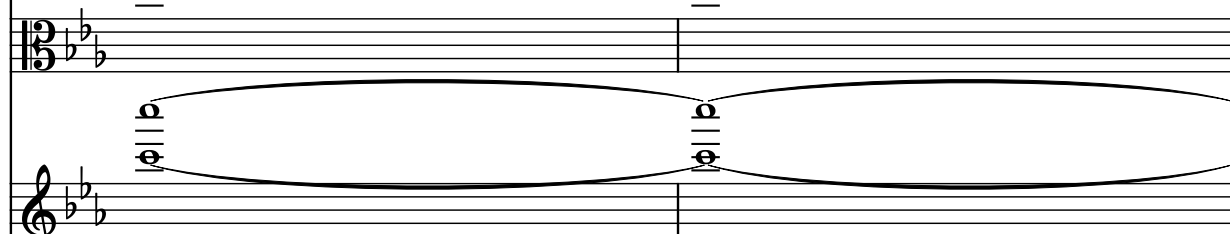
Strings, Staff-2



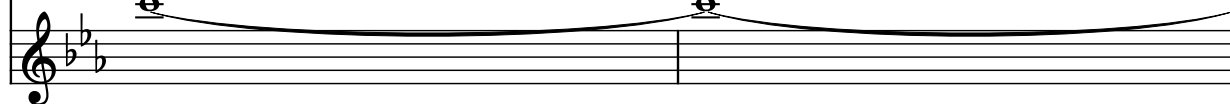
Perc. Org.



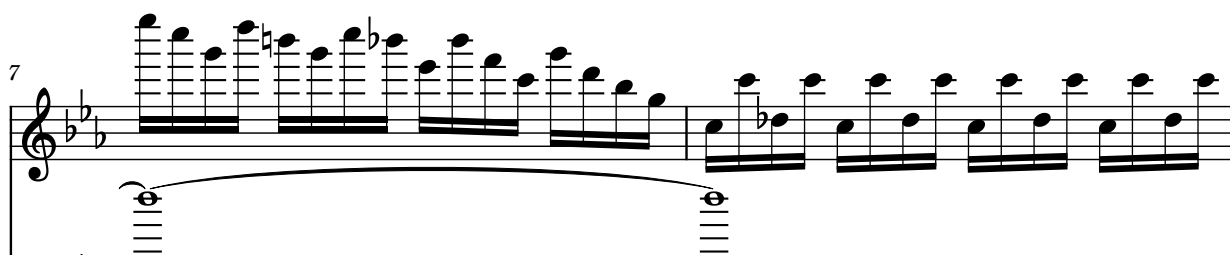
Vla.



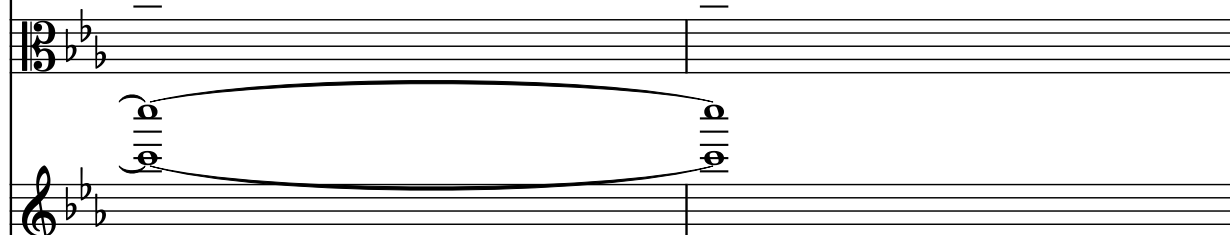
St.



Perc. Org.



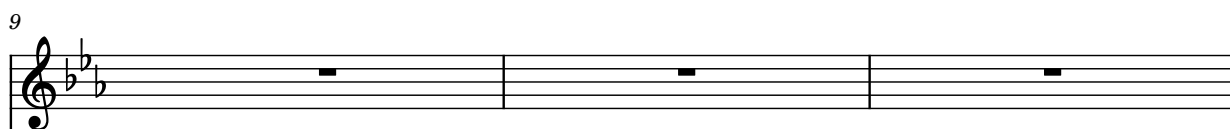
Vla.



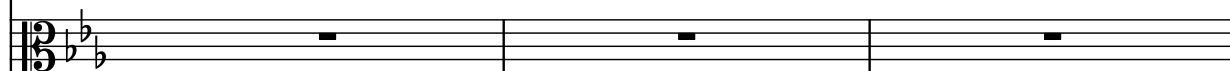
St.



Perc. Org.



Vla.



St.



12

Perc. Org.

Vla.

St.

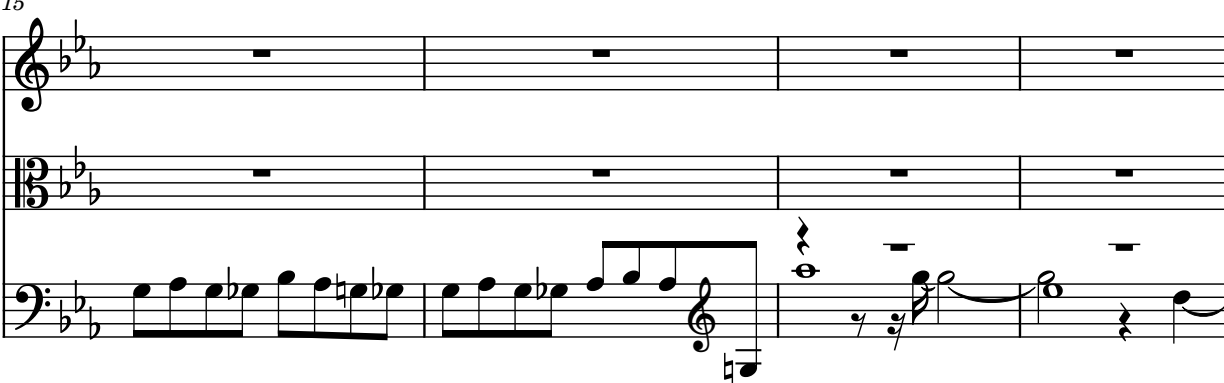


15

Perc. Org.

Vla.

St.

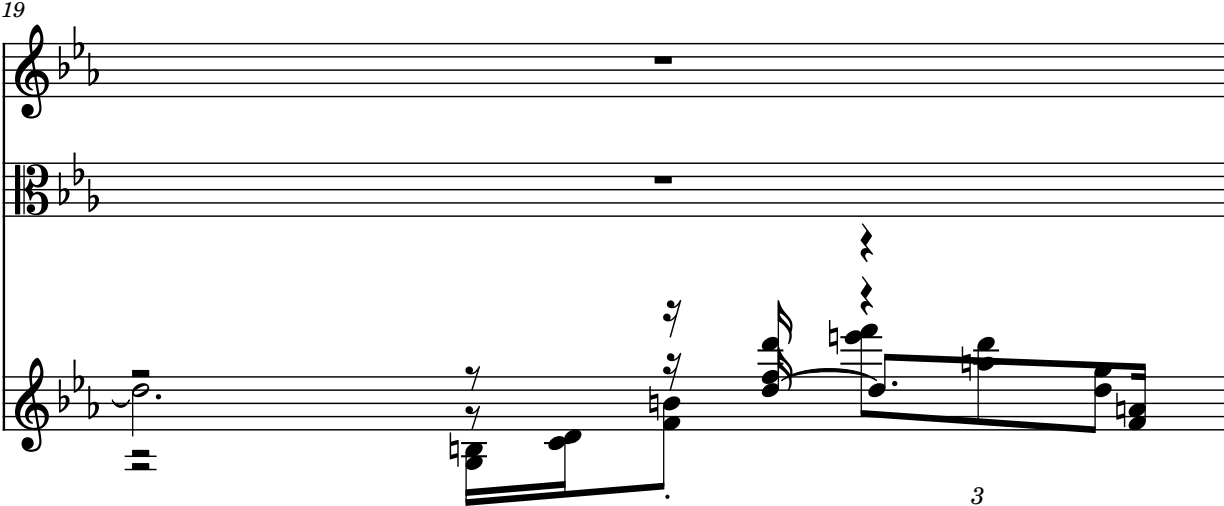


19

Perc. Org.

Vla.

St.

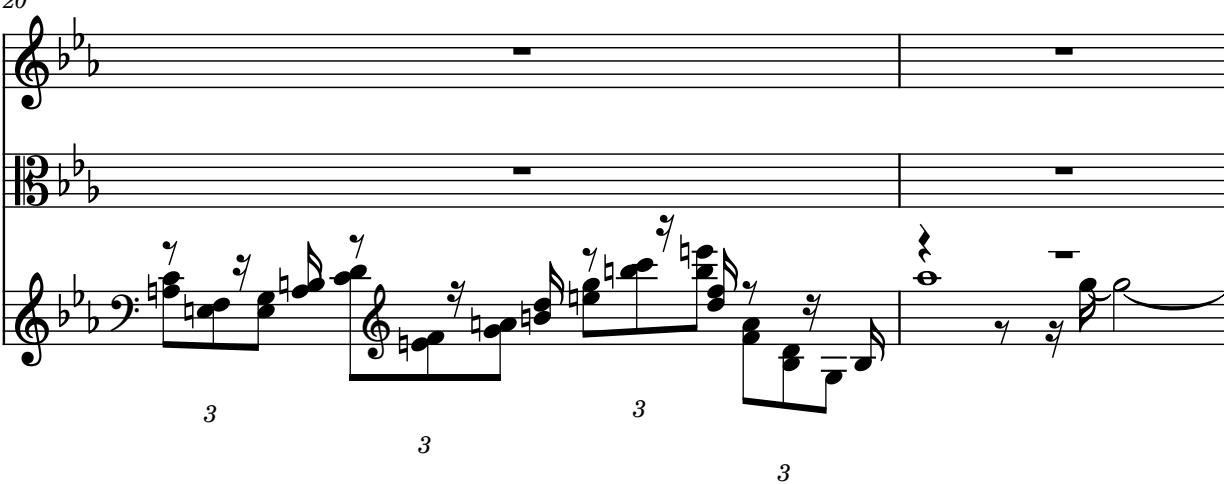


20

Perc. Org.

Vla.

St.



22

Perc. Org.

Vla.

St.

3

24

Perc. Org.

Vla.

St.

3

3

3

3

26

Perc. Org.

Vla.

St.

3

31

Perc. Org.

Vla.

St.

3

33

Perc. Org.

Vla.

St.

Measures 33-34. Percussion organ plays a continuous eighth-note melody. Viola and String parts have rests followed by notes in measure 34.

35

Perc. Org.

Vla.

St.

Measures 35-36. Percussion organ continues its melody. Viola and String parts have whole notes in measure 36.

37

Perc. Org.

Vla.

St.

Measures 37-38. Percussion organ continues its melody. Viola and String parts have rests followed by notes in measure 38.

39

Perc. Org.

Vla.

St.

Measures 39-41. Percussion organ continues its melody. Viola and String parts have whole notes in measure 40 and rests in measure 41.

42

Perc. Org.

Vla.

St.

Measures 42-44. Percussion organ has rests. Viola and String parts have rests followed by notes in measure 43.

51

Perc. Org.

Vla.

St.

Measures 51-56: Percussion organ has whole rests. Viola has a melodic line with slurs. String has a melodic line with slurs.

57

Perc. Org.

Vla.

St.

Measures 57-58: Percussion organ has a dense sixteenth-note pattern. Viola has a melodic line with a slur. String has a melodic line with a slur.

59

Perc. Org.

Vla.

St.

Measures 59-60: Percussion organ has a dense sixteenth-note pattern. Viola has a melodic line with a slur. String has a melodic line with a slur.

61

Perc. Org.

Vla.

St.

Measures 61-62: Percussion organ has a dense sixteenth-note pattern. Viola has a melodic line with a slur. String has a melodic line with a slur.

63

Perc. Org.

Vla.

St.

Measures 63-64. Percussion organ (Perc. Org.) plays a continuous sixteenth-note melody. Viola (Vla.) and String (St.) parts are mostly rests, with some melodic fragments in measure 64.

65

Perc. Org.

Vla.

St.

Measures 65-66. Percussion organ (Perc. Org.) is silent. Viola (Vla.) and String (St.) parts play a rhythmic pattern of eighth and sixteenth notes.

71

Perc. Org.

Vla.

St.

Measures 71-72. Percussion organ (Perc. Org.) is silent. Viola (Vla.) and String (St.) parts play a rhythmic pattern of eighth and sixteenth notes, with a long sustain in measure 72.

74

Perc. Org.

Vla.

St.

Measures 74-75. Percussion organ (Perc. Org.) plays a continuous sixteenth-note melody. Viola (Vla.) and String (St.) parts are mostly rests, with some melodic fragments in measure 75.

76

Perc. Org.

Vla.

St.

79

Perc. Org.

Vla.

St.

82

Perc. Org.

Vla.

St.

85

Perc. Org.

Vla.

St.



88

Perc. Org.

Vla.

St.

3 3 3 3

90

Perc. Org.

Vla.

St.

3

92

Perc. Org.

Vla.

St.

3 3 3 3

94

Perc. Org.

Vla.

St.

3 3 3 3

99

Perc. Org.

Vla.

St.

101

Perc. Org.

Vla.

St.

103

Perc. Org.

Vla.

St.

105

Perc. Org.

Vla.

St.

107

Perc. Org.

Vla.

St.

Measures 107-109. Percussion organ plays a continuous sixteenth-note melody. Viola and String parts are mostly rests, with a single half-note in measure 108.

110

Perc. Org.

Vla.

St.

Measures 110-118. Percussion organ is silent. Viola and String parts have rests until measure 118, where they enter with a new melody.

119

Perc. Org.

Vla.

St.

Measures 119-124. Percussion organ is silent. Viola and String parts play a sustained melody with long notes and ties.

125

Perc. Org.

Vla.

St.

Measures 125-126. Percussion organ plays a sixteenth-note melody. Viola and String parts have long notes with ties.

127

Perc. Org.

Vla.

St.

Measures 127-128. Percussion organ plays a sixteenth-note melody. Viola and String parts have long notes with ties.

129

Perc. Org.

Vla.

St.

Measures 129-130. The Percussion Organ (Perc. Org.) plays a continuous, rapid sixteenth-note melody in the right hand. The Viola (Vla.) and String (St.) parts provide a sustained harmonic support, with the Viola playing a half note and the String playing a half note, both tied across the measures.

131

Perc. Org.

Vla.

St.

Measures 131-132. The Percussion Organ (Perc. Org.) continues its rapid sixteenth-note melody. The Viola (Vla.) and String (St.) parts maintain the sustained harmonic support, with the Viola playing a half note and the String playing a half note, both tied across the measures.

133

Perc. Org.

Vla.

St.

Measures 133-136. The Percussion Organ (Perc. Org.) is silent, indicated by a whole rest. The Viola (Vla.) and String (St.) parts play a melodic line, starting with a quarter rest followed by a series of eighth and quarter notes, ending with a double bar line.