

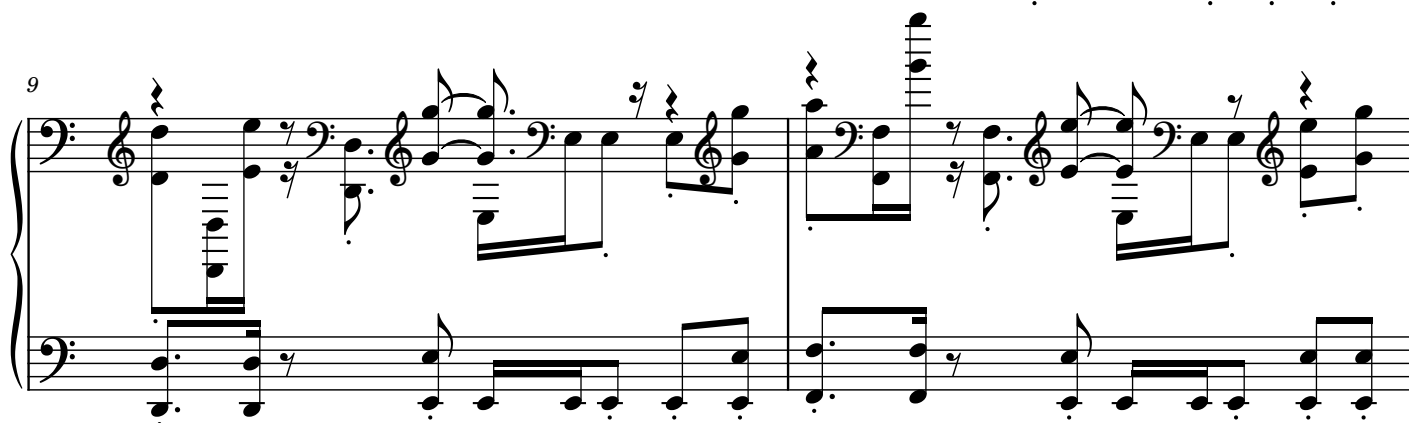
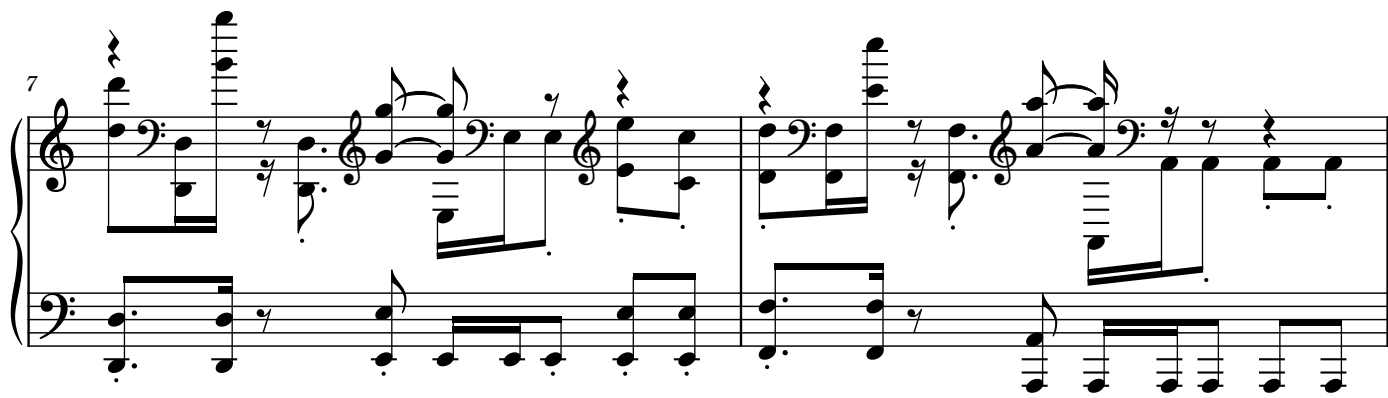
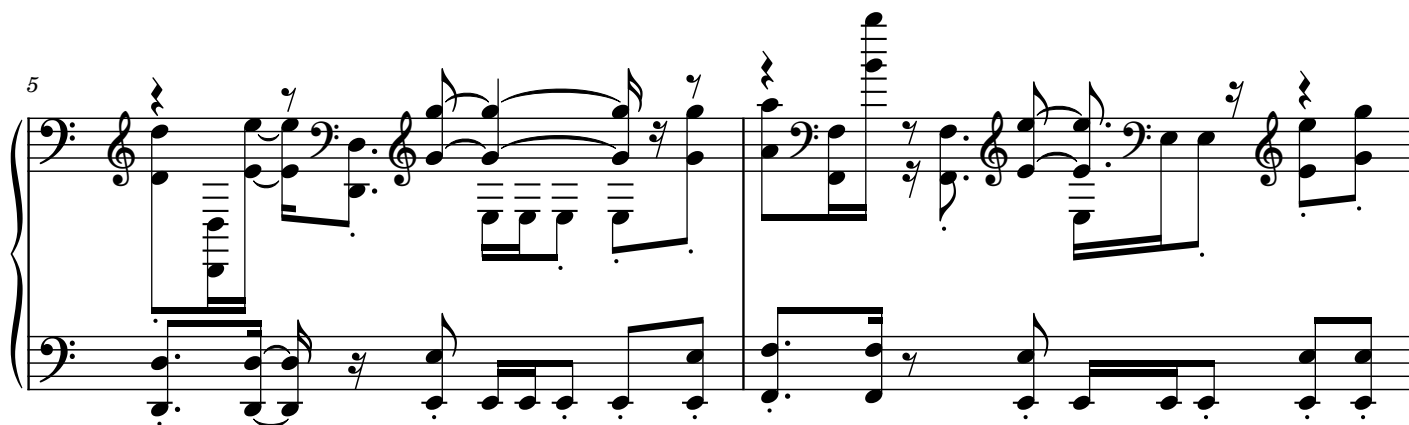
Title Loop 2

Composer: Shoji Meguro

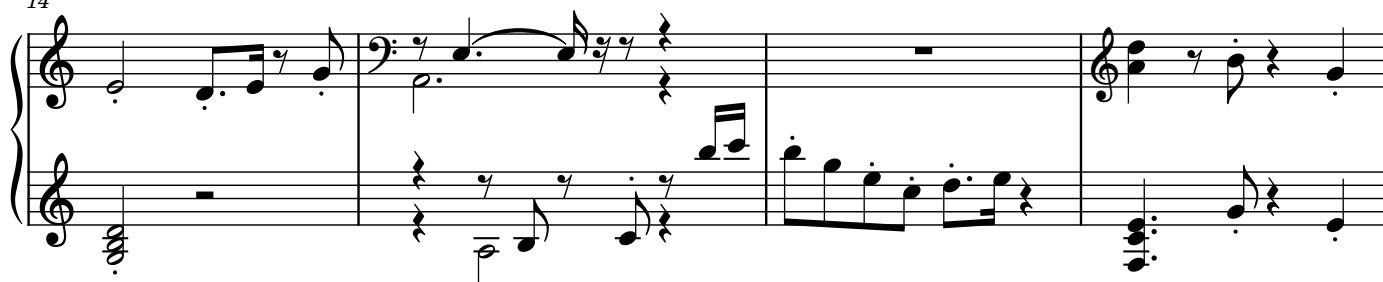
Game: Shin Megami Tensei: Nocturne

pianogame.org

♩ = 102




14



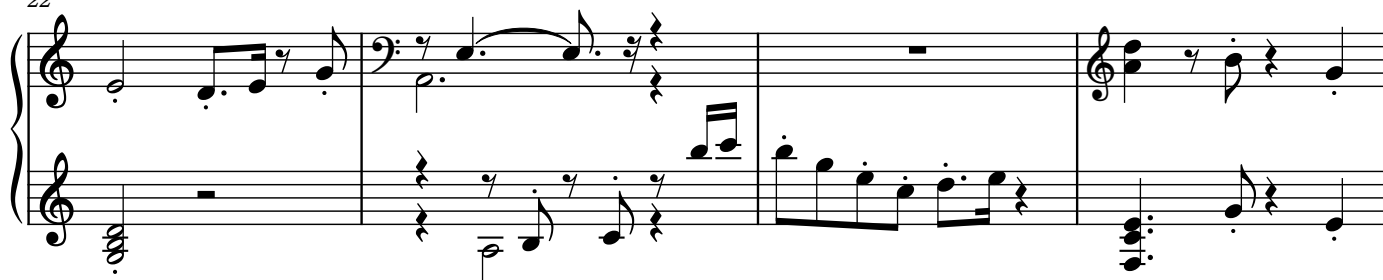
System 1 (measures 14-17): The right hand plays a melody starting with a half note G4, followed by eighth notes A4 and B4, and a quarter note C5. The left hand provides accompaniment with a half note G3, followed by eighth notes F3 and E3, and a quarter note D3. The system concludes with a whole note chord of G4 and B4 in the right hand, and a whole note chord of G3 and B2 in the left hand.

18



System 2 (measures 18-21): The right hand continues the melody with a half note A4, followed by eighth notes B4 and C5, and a quarter note D5. The left hand continues the accompaniment with a half note F3, followed by eighth notes E3 and D3, and a quarter note C3. The system concludes with a whole note chord of A4 and C5 in the right hand, and a whole note chord of A2 and C3 in the left hand.

22



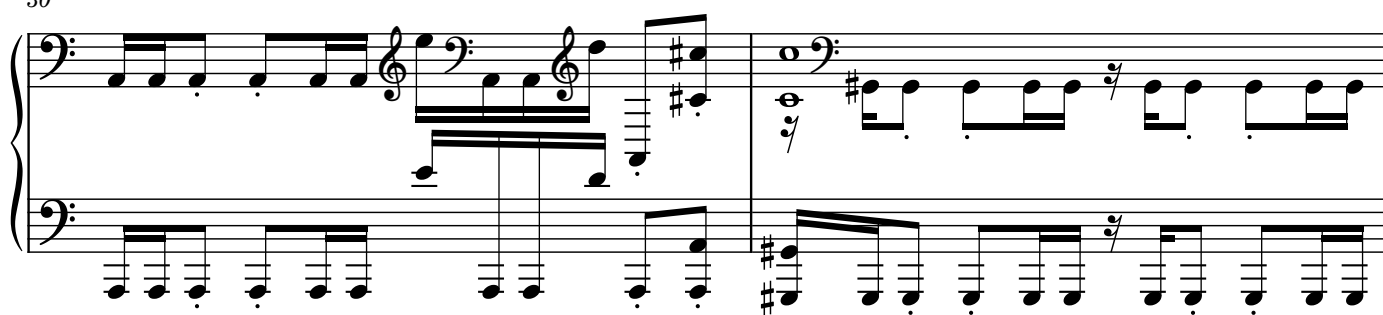
System 3 (measures 22-25): The right hand plays a melody starting with a half note B4, followed by eighth notes C5 and D5, and a quarter note E5. The left hand provides accompaniment with a half note E3, followed by eighth notes D3 and C3, and a quarter note B2. The system concludes with a whole note chord of B4 and D5 in the right hand, and a whole note chord of B2 and D3 in the left hand.

26



System 4 (measures 26-29): The right hand plays a melody starting with a half note C5, followed by eighth notes D5 and E5, and a quarter note F5. The left hand provides accompaniment with a half note D3, followed by eighth notes C3 and B2, and a quarter note A2. The system concludes with a whole note chord of C5 and E5 in the right hand, and a whole note chord of C3 and E3 in the left hand.

30



System 5 (measures 30-33): The right hand plays a melody starting with a half note D5, followed by eighth notes E5 and F5, and a quarter note G5. The left hand provides accompaniment with a half note E3, followed by eighth notes D3 and C3, and a quarter note B2. The system concludes with a whole note chord of D5 and F5 in the right hand, and a whole note chord of D3 and F3 in the left hand.

32

Measures 32-35 of a musical score. The score is written for piano in G major (one sharp). Measures 32 and 33 feature a complex texture with multiple sixteenth-note runs in both hands. Measures 34 and 35 are mostly rests, with a few notes in the right hand and a sustained chord in the left hand.

36

Measures 36-39 of a musical score. Measures 36 and 37 feature a complex texture with multiple sixteenth-note runs in both hands. Measures 38 and 39 continue the melodic lines with some rests and sustained notes.

40

Measures 40-41 of a musical score. Both measures feature a complex texture with multiple sixteenth-note runs in both hands, continuing the melodic development.

42

Measures 42-45 of a musical score. Measures 42 and 43 feature a complex texture with multiple sixteenth-note runs in both hands. Measures 44 and 45 continue the melodic lines with some rests and sustained notes.

44

Measures 44 and 45 of a piano piece. The score is written for two staves, treble and bass. Measure 44 features a complex rhythmic pattern with eighth and sixteenth notes, including a triplet in the right hand. Measure 45 continues this pattern with a final triplet. The left hand provides a steady accompaniment with eighth notes.

46

Measures 46 and 47. Measure 46 shows a continuation of the rhythmic motifs from the previous measures. Measure 47 introduces a new melodic line in the right hand, featuring a half note and a quarter note, while the left hand maintains its accompaniment.

48

Measures 48 and 49. Measure 48 continues the melodic development in the right hand. Measure 49 features a more active right hand with eighth notes, while the left hand accompaniment remains consistent.

50

Measure 50, the final measure of the page. It concludes the piece with a final chord in the right hand and a sustained note in the left hand, marked with a fermata.