

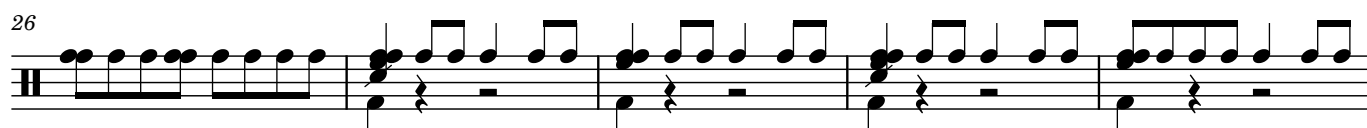
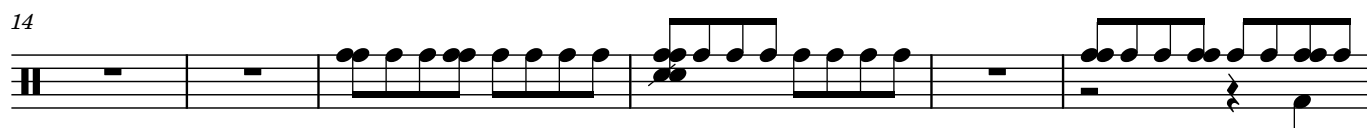
Title Screen (2)

Composer: Kenji Yamamoto

Game: Metroid Prime

pianogame.org

♩ = 148



2

64

64

69

69

69

75

75

Example 75 is a musical score for a single melodic line and a bass line. The melodic line is written in a treble clef and consists of a series of eighth and sixteenth notes, with some beamed sixteenth notes. The bass line is written in a bass clef and consists of a series of rests, indicating that the bass part is silent for the duration of the piece. The score is divided into four measures by vertical bar lines. The first measure contains a treble clef and a bass clef. The second measure contains a treble clef and a bass clef. The third measure contains a treble clef and a bass clef. The fourth measure contains a treble clef and a bass clef.

79

79

79

83

83



87

87

94

94

10

101

The musical score for Example 101 is written on a single five-line staff. It begins with a C-clef (soprano clef) on the first line. The piece starts with a whole rest on the first line. This is followed by a series of eighth and sixteenth notes, many of which are beamed together in groups. There are several accidentals, including naturals and sharps, throughout the piece. The notation is dense, with many notes beamed together, suggesting a fast or complex rhythmic pattern. The piece concludes with a final note on the first line.

10

106

The musical score for Example 106 consists of two staves. The piano accompaniment is written on a grand staff (treble and bass clefs) and includes a key signature of one sharp (F#) and a 3/4 time signature. The vocal line is written on a single staff with a soprano clef. The piano part begins with a series of chords and single notes, while the vocal line enters with a melody of eighth and sixteenth notes. The score is divided into measures by vertical bar lines.

11

112

113

11

118

