

Knightman/Magnetman's Stage (XG)

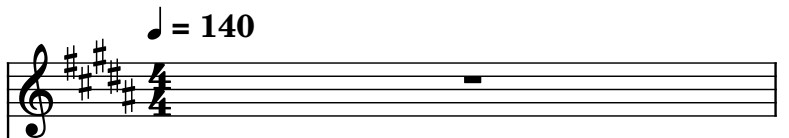
Composer: Toshihiko Horiyama

Game: Mega Man Battle Network 5

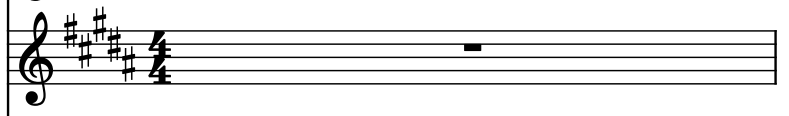
pianogame.org

♩ = 140

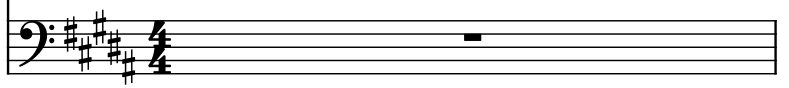
Brass Synthesizer, Brightness FX (Melody)



Mallet Synthesizer, Square Lead (Background)



Bass Synthesizer, Synth Bass 1 (Bassline)



2

Synth.



Mal. Syn.



Synth.



4

Synth.



Mal. Syn.



Synth.



6

Synth.



Mal. Syn.

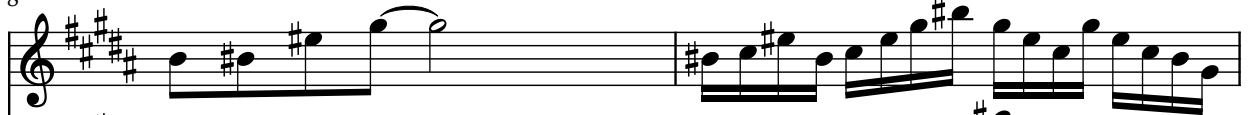


Synth.



8

Synth.



Mal. Syn.



Synth.



10

Synth.

Mal. Syn.

Synth.

11

Synth.

Mal. Syn.

Synth.

12

Synth.

Mal. Syn.

Synth.

13

Synth.

Mal. Syn.

Synth.

15

Synth.

Mal. Syn.

Synth.

17

Synth.

Mal. Syn.

Synth.

19

Synth.

Mal. Syn.

Synth.

21

Synth.

Mal. Syn.

Synth.

23

Synth.

Mal. Syn.

Synth.

26

Synth.

Mal. Syn.

Synth.

28

Synth.

Mal. Syn.

Synth.

30

Synth.

Mal. Syn.

Synth.

32

Synth.

Mal. Syn.

Synth.

34

Synth.

Mal. Syn.

Synth.

35

Synth.

Mal. Syn.

Synth.

36

Synth.

Mal. Syn.

Synth.

37

Synth.

Mal. Syn.

Synth.

39

Synth.

Mal. Syn.

Synth.

41

Synth.

Mal. Syn.

Synth.

43

Synth.

Mal. Syn.

Synth.

45

Synth.

Mal. Syn.

Synth.

Detailed description of the musical score: The score is written for three staves: Synth. (top), Mal. Syn. (middle), and Synth. (bottom). The key signature is three sharps (F#, C#, G#). The first system (measures 39-40) shows a Synth. staff with a whole note chord, a Mal. Syn. staff with a complex melodic line, and a Synth. staff with a rhythmic pattern. The second system (measures 41-42) shows a Synth. staff with a whole note chord, a Mal. Syn. staff with a complex melodic line, and a Synth. staff with a rhythmic pattern. The third system (measures 43-44) shows a Synth. staff with a whole note chord, a Mal. Syn. staff with a complex melodic line, and a Synth. staff with a rhythmic pattern. The fourth system (measures 45-46) shows a Synth. staff with a whole note chord, a Mal. Syn. staff with a complex melodic line, and a Synth. staff with a rhythmic pattern.

47

Synth.

Mal. Syn.

Synth.

This musical score segment contains measures 47 through 50. The top staff, labeled 'Synth.', is in treble clef with a key signature of three sharps (F#, C#, G#). It features whole rests in measures 47 and 48, followed by a descending eighth-note scale (F#, E, D, C, B) in measure 49, and a final measure with a whole note chord (F#, C#, G#) and a whole rest. The middle staff, labeled 'Mal. Syn.', is in treble clef with the same key signature. It contains a continuous eighth-note melody with various accidentals, including naturals and sharps, across all four measures. The bottom staff, labeled 'Synth.', is in bass clef with the same key signature. It features a continuous eighth-note melody with various accidentals, including naturals and sharps, across all four measures. The piece concludes with a double bar line at the end of measure 50.