

# Mumbo's Mountain

Composer: Grant Kirkhope

Game: Banjo-Kazooie

[pianogame.org](http://pianogame.org)

$\text{♩} = 92$

Large Drum Kit, Drums

Rag Dung, Trumpet

Lupophone, Oboe

Measures 1-3 of the first system. The Large Drum Kit (top staff) has a 4/4 time signature and a key signature of one sharp (F#). It features a steady eighth-note pattern. The Rag Dung, Trumpet (middle staff) has a 4/4 time signature and a key signature of one sharp (F#). It features a steady eighth-note pattern. The Lupophone, Oboe (bottom staff) has a 4/4 time signature and a key signature of one sharp (F#). It features a steady eighth-note pattern.

D. Kit

Rg. Dng.

Lph.

Measures 4-6 of the second system. The D. Kit (top staff) has a 4/4 time signature and a key signature of one sharp (F#). It features a steady eighth-note pattern. The Rg. Dng. (middle staff) has a 4/4 time signature and a key signature of one sharp (F#). It features a steady eighth-note pattern. The Lph. (bottom staff) has a 4/4 time signature and a key signature of one sharp (F#). It features a steady eighth-note pattern.

D. Kit

Rg. Dng.

Lph.

Measures 7-9 of the third system. The D. Kit (top staff) has a 4/4 time signature and a key signature of one sharp (F#). It features a steady eighth-note pattern. The Rg. Dng. (middle staff) has a 4/4 time signature and a key signature of one sharp (F#). It features a steady eighth-note pattern. The Lph. (bottom staff) has a 4/4 time signature and a key signature of one sharp (F#). It features a steady eighth-note pattern.

D. Kit

Rg. Dng.

Lph.

Measures 10-12 of the fourth system. The D. Kit (top staff) has a 4/4 time signature and a key signature of one sharp (F#). It features a steady eighth-note pattern. The Rg. Dng. (middle staff) has a 4/4 time signature and a key signature of one sharp (F#). It features a steady eighth-note pattern. The Lph. (bottom staff) has a 4/4 time signature and a key signature of one sharp (F#). It features a steady eighth-note pattern.

D. Kit

Rg. Dng.

Lph.

Measures 13-15 of the fifth system. The D. Kit (top staff) has a 4/4 time signature and a key signature of one sharp (F#). It features a steady eighth-note pattern. The Rg. Dng. (middle staff) has a 4/4 time signature and a key signature of one sharp (F#). It features a steady eighth-note pattern. The Lph. (bottom staff) has a 4/4 time signature and a key signature of one sharp (F#). It features a steady eighth-note pattern.

16

D. Kit

Rg. Dng.

Lph.

19

D. Kit

Rg. Dng.

Lph.

22

D. Kit

Rg. Dng.

Lph.

25

D. Kit

Rg. Dng.

Lph.

28

D. Kit

Rg. Dng.

Lph.

31

D. Kit

Rg. Dng.

Lph.

34

D. Kit

Rg. Dng.

Lph.

37

D. Kit

Rg. Dng.

Lph.

40

D. Kit

Rg. Dng.

Lph.

Detailed description of the musical score: The score is for three instruments: D. Kit, Rg. Dng., and Lph. It is divided into five systems, each starting with a measure number (28, 31, 34, 37, 40). Each system contains three staves. The D. Kit staff uses a double bar line and a common time signature. The Rg. Dng. staff uses a bass clef. The Lph. staff uses a treble clef. The music consists of rhythmic patterns and chords. The first system (28-30) shows all three instruments playing. The second system (31-33) shows all three instruments playing. The third system (34-36) shows all three instruments playing. The fourth system (37-39) shows the D. Kit and Lph. playing, while the Rg. Dng. is silent. The fifth system (40-42) shows the D. Kit and Lph. playing, while the Rg. Dng. is silent.

43

D. Kit

Rg. Dng.

Lph.

Measures 43-45. D. Kit plays a continuous eighth-note pattern. Rg. Dng. and Lph. are mostly silent, with Rg. Dng. entering in measure 45 with a melodic line.

46

D. Kit

Rg. Dng.

Lph.

Measures 46-48. D. Kit continues the eighth-note pattern. Rg. Dng. plays a melodic line. Lph. is silent.

49

D. Kit

Rg. Dng.

Lph.

Measures 49-51. D. Kit continues the eighth-note pattern. Rg. Dng. plays a melodic line. Lph. enters in measure 51 with a complex rhythmic pattern.

52

D. Kit

Rg. Dng.

Lph.

Measures 52-54. D. Kit continues the eighth-note pattern. Rg. Dng. plays a melodic line. Lph. plays a complex rhythmic pattern.

55

D. Kit

Rg. Dng.

Lph.

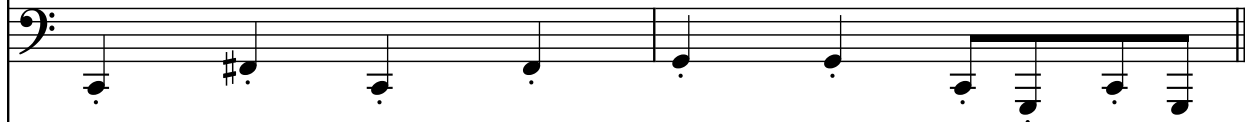
Measures 55-57. D. Kit continues the eighth-note pattern. Rg. Dng. plays a melodic line. Lph. plays a complex rhythmic pattern.

58

D. Kit



Rg. Dng.



Lph.

