

# Waterworld (2)

Composer: David Wise

Game: Donkey Kong Country 3

[pianogame.org](http://pianogame.org)

♩ = 80

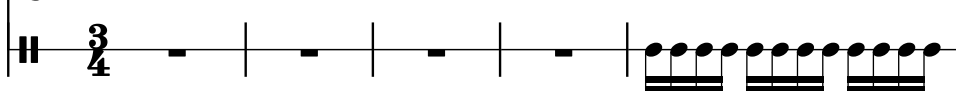
Violins (section), Staff-5



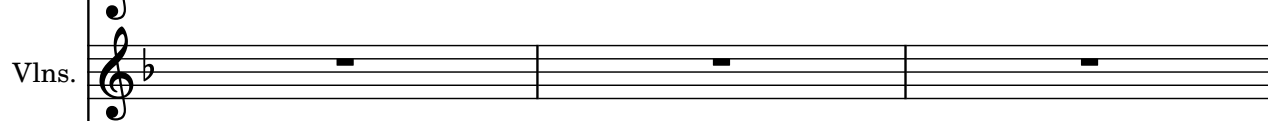
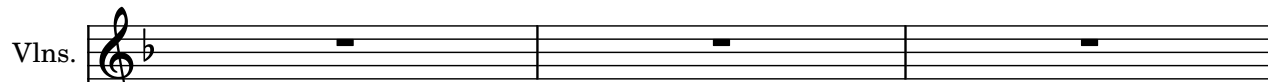
Violins (section), Staff-9



Automobile Brake Drums, Staff



6



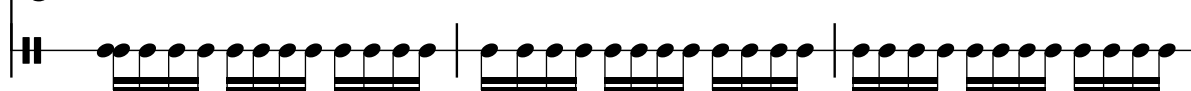
Aut. Brk. Dr.



9



Aut. Brk. Dr.



12



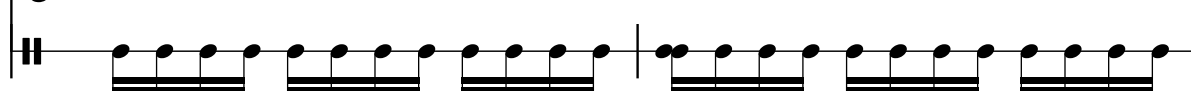
Aut. Brk. Dr.



14



Aut. Brk. Dr.



16

Vlns.

Vlns.

Aut. Brk. Dr.

Measures 16-18: Violins 1 and 2 play eighth-note patterns in B-flat major. Automatic Brk. Dr. plays a steady eighth-note pulse.

19

Vlns.

Vlns.

Aut. Brk. Dr.

Measures 19-20: Violins 1 and 2 continue their eighth-note patterns. Automatic Brk. Dr. continues the pulse.

21

Vlns.

Vlns.

Aut. Brk. Dr.

Measures 21-23: Violins 1 and 2 continue their eighth-note patterns. Automatic Brk. Dr. continues the pulse.

24

Vlns.

Vlns.

Aut. Brk. Dr.

Measures 24-26: Violins 1 and 2 continue their eighth-note patterns. Automatic Brk. Dr. continues the pulse.

27

Vlns.

Vlns.

Aut. Brk. Dr.

Measures 27-30: Violins 1 and 2 play a more complex eighth-note pattern with accidentals. Automatic Brk. Dr. continues the pulse.

29

Vlns.

Vlns.

Aut. Brk. Dr.

Measures 29-30: Violins 1 and 2 play a melodic line with eighth and sixteenth notes. The automatic brake drum plays a steady eighth-note pattern.

31

Vlns.

Vlns.

Aut. Brk. Dr.

Measures 31-32: Violins 1 and 2 continue the melodic line. The automatic brake drum continues the eighth-note pattern.

33

Vlns.

Vlns.

Aut. Brk. Dr.

Measures 33-35: Violins 1 and 2 are silent. The automatic brake drum continues the eighth-note pattern.

36

Vlns.

Vlns.

Aut. Brk. Dr.

Measures 36-38: Violins 1 and 2 enter with a new melodic line. The automatic brake drum continues the eighth-note pattern.

39

Vlns.

Vlns.

Aut. Brk. Dr.

Measures 39-41: Violins 1 and 2 continue the melodic line. The automatic brake drum continues the eighth-note pattern.

42

Vlms.

Vlms.

Aut. Brk. Dr.

44

Vlms.

Vlms.

Aut. Brk. Dr.

46

Vlms.

Vlms.

Aut. Brk. Dr.

49

Vlms.

Vlms.

Aut. Brk. Dr.

51

Vlms.

Vlms.

Aut. Brk. Dr.

53

Vlns.

Vlns.

Aut. Brk. Dr.

Measures 53-54: Violins I and II play eighth-note patterns in B-flat major. Automatic Brk. Dr. plays a steady eighth-note pulse.

55

Vlns.

Vlns.

Aut. Brk. Dr.

Measures 55-56: Violins I and II continue their eighth-note patterns. Automatic Brk. Dr. continues the pulse.

57

Vlns.

Vlns.

Aut. Brk. Dr.

Measures 57-58: Violins I and II introduce sixteenth-note patterns. Automatic Brk. Dr. continues the pulse.

59

Vlns.

Vlns.

Aut. Brk. Dr.

Measures 59-60: Violins I and II continue with sixteenth-note patterns. Automatic Brk. Dr. continues the pulse.

61

Vlns.

Vlns.

Aut. Brk. Dr.

Measures 61-62: Violins I and II continue with sixteenth-note patterns. Automatic Brk. Dr. continues the pulse.

63

Vlns.

Vlns.

Aut. Brk. Dr.

Measures 63-65: Violins play a melodic line starting with a quarter note, followed by eighth notes. The automatic brass and drums play a steady eighth-note pattern.

66

Vlns.

Vlns.

Aut. Brk. Dr.

Measures 66-68: Violins play a melodic line starting with a quarter note, followed by eighth notes. The automatic brass and drums play a steady eighth-note pattern.

69

Vlns.

Vlns.

Aut. Brk. Dr.

Measures 69-71: Violins play a melodic line starting with a quarter note, followed by eighth notes. The automatic brass and drums play a steady eighth-note pattern.

72

Vlns.

Vlns.

Aut. Brk. Dr.

Measures 72-74: Violins play a melodic line starting with a quarter note, followed by eighth notes. The automatic brass and drums play a steady eighth-note pattern.