

Little Sweet Cafe

Composer: Hiroki Kikuta

Game: Seiken Densetsu 3 (Japan)

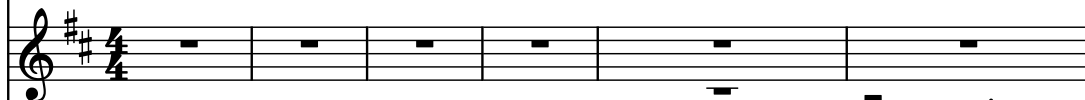
pianogame.org

♩ = 120

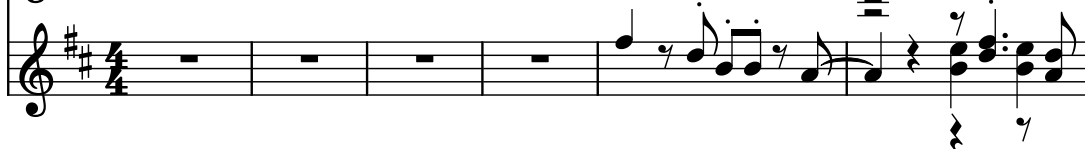
Contrabass, acoubass



Violin, trem-stringz

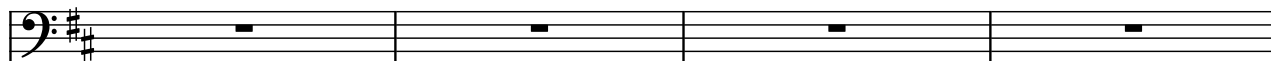


Pan Flute, pflute

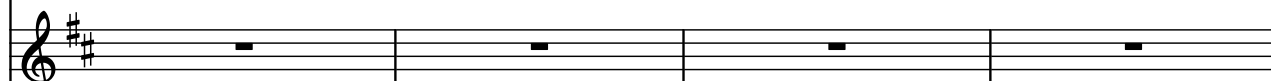


7

Cb.



Vln.

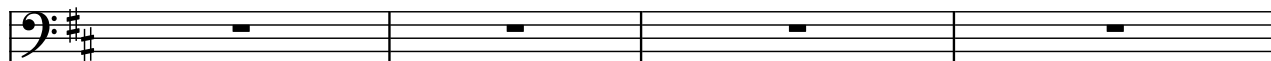


Pn. Fl.

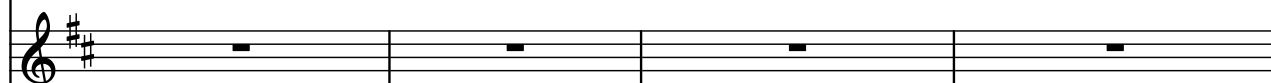


11

Cb.



Vln.

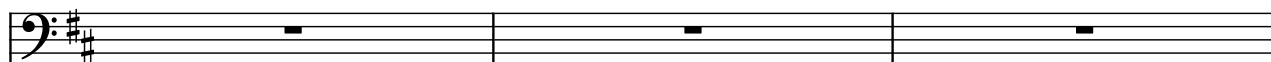


Pn. Fl.

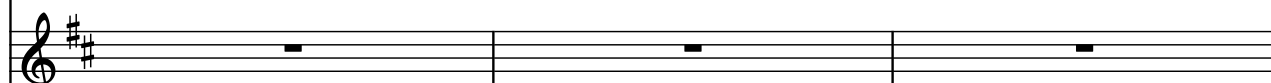


15

Cb.



Vln.

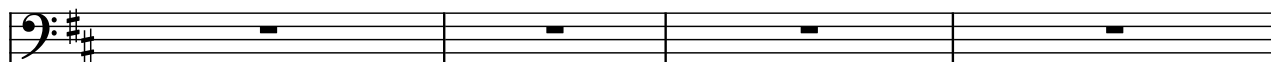


Pn. Fl.

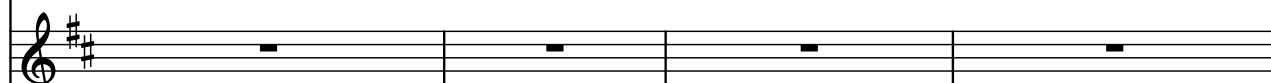


18

Cb.



Vln.



Pn. Fl.



22

22

Cb.

Vln.

Pn. Fl.

25

25

Cb.

Vln.

Pn. Fl.

29

29

Cb.

Vln.

Pn. Fl.

32

32

Cb.

Vln.

Pn. Fl.

35

Cb.

Vln.

Pn. Fl.

Measures 35-37: Cello (Cb.) plays a descending eighth-note pattern. Violin (Vln.) plays a series of chords and eighth notes. Piano Flute (Pn. Fl.) is silent.

38

Cb.

Vln.

Pn. Fl.

Measures 38-40: Cello (Cb.) continues the descending eighth-note pattern. Violin (Vln.) plays a series of chords and eighth notes. Piano Flute (Pn. Fl.) is silent.

41

Cb.

Vln.

Pn. Fl.

Measures 41-43: Cello (Cb.) continues the descending eighth-note pattern. Violin (Vln.) plays a series of chords and eighth notes. Piano Flute (Pn. Fl.) is silent.

44

Cb.

Vln.

Pn. Fl.

Measures 44-46: Cello (Cb.) plays a descending eighth-note pattern. Violin (Vln.) plays a series of chords and eighth notes. Piano Flute (Pn. Fl.) is silent.

50

Cb.

Vln.

Pn. Fl.

54

Cb.

Vln.

Pn. Fl.

58

Cb.

Vln.

Pn. Fl.

61

Cb.

Vln.

Pn. Fl.

65

Cb.

Vln.

Pn. Fl.


68


Cb. 

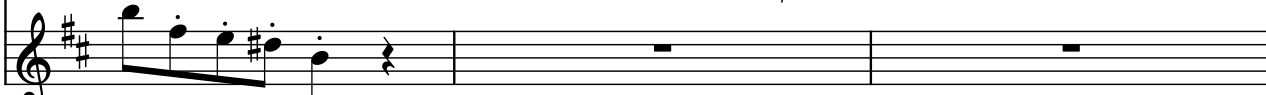
Vln. 

Pn. Fl. 


72


Cb. 

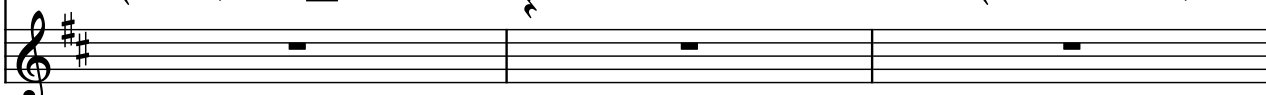
Vln. 

Pn. Fl. 

75

Cb. 

Vln. 

Pn. Fl. 

78

Cb. 

Vln. 

Pn. Fl. 

81

Cb.

Vln.

Pn. Fl.

Measures 81-83. The Cb. part features a melodic line with eighth and quarter notes. The Vln. part is more complex, featuring chords and moving lines. The Pn. Fl. part is silent.

84

Cb.

Vln.

Pn. Fl.

Measures 84-86. The Cb. part continues the melodic line. The Vln. part continues the complex texture. The Pn. Fl. part is silent.

87

Cb.

Vln.

Pn. Fl.

Measures 87-89. The Cb. part plays a melodic line. The Vln. part plays a complex texture. The Pn. Fl. part is silent.