

Protect Factory - "Infiltration" (2)

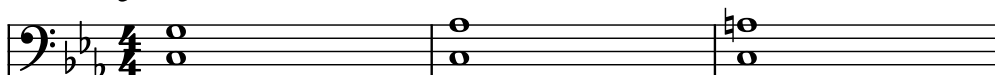
Composer: Ippo Yamada

Game: Mega Man Zero

pianogame.org

♩ = 80

Contrabasses (section), Staff



Soprano, Staff-4

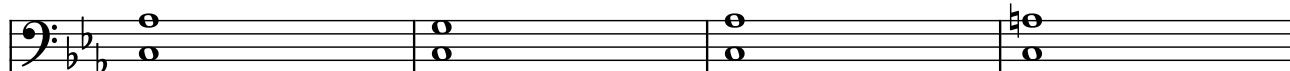


Crotales, Staff-1

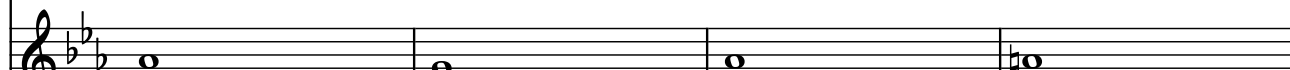


4

Cbs.



S.

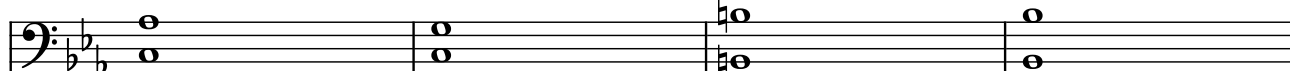


Crot.

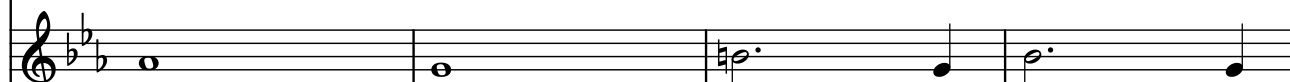


8

Cbs.



S.

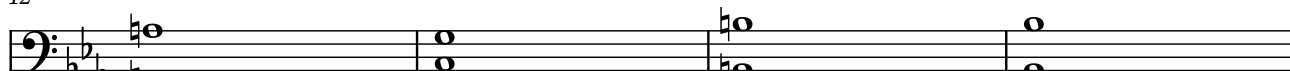


Crot.

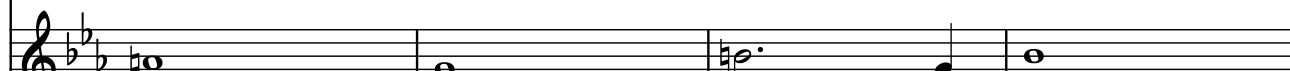


12

Cbs.



S.

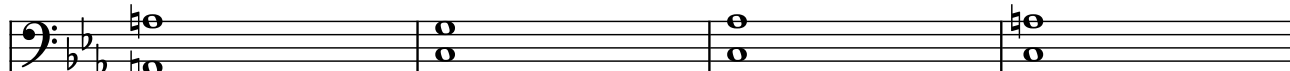


Crot.

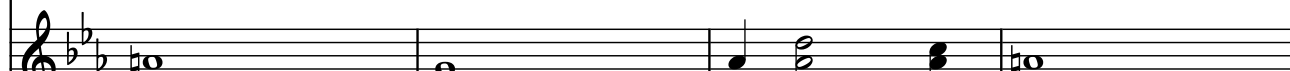


16

Cbs.



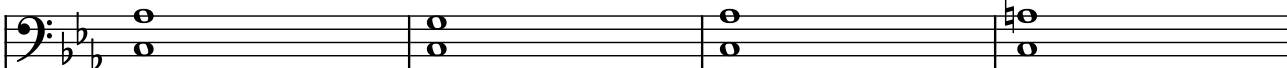
S.

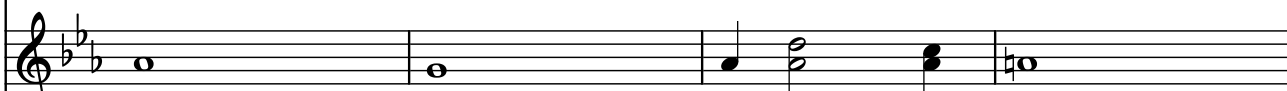



Crot.



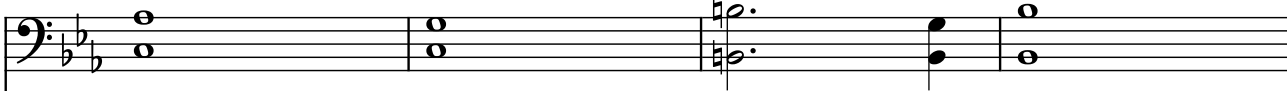
20

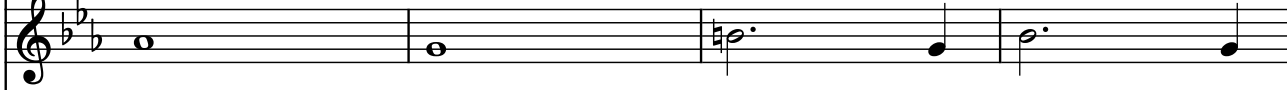
Cbs. 


S. 

Crot. 

24

Cbs. 

S. 

Crot. 

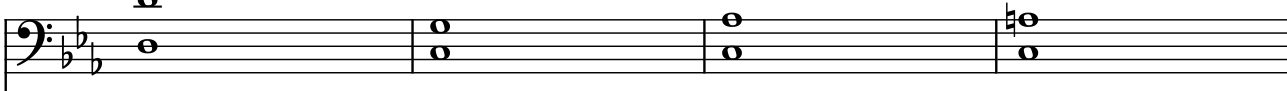
28

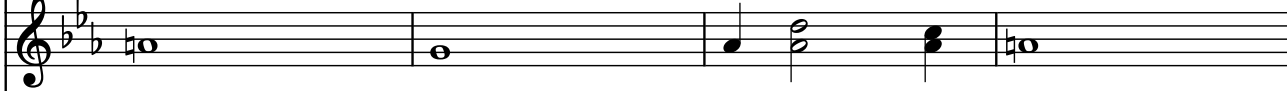
Cbs. 


S. 

Crot. 

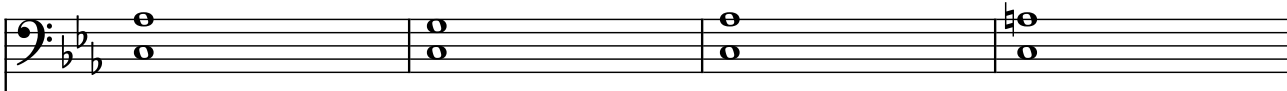
32

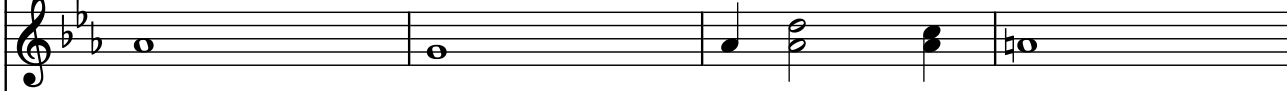
Cbs. 


S. 

Crot. 

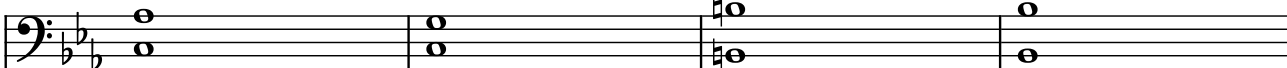
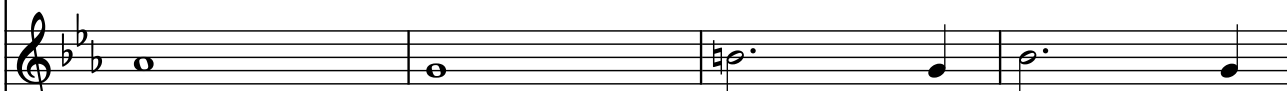

36

Cbs. 

S. 

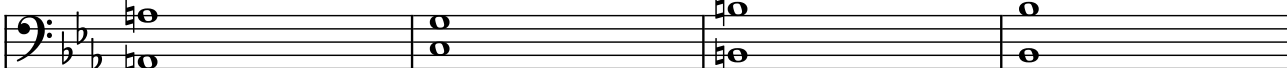
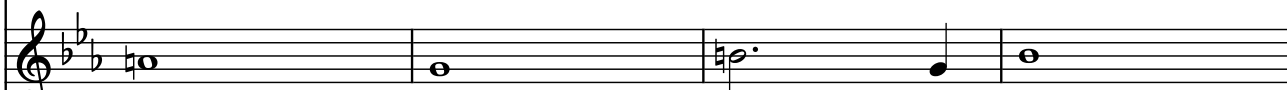

Crot. 

40

Cbs.  S.  Crot. 

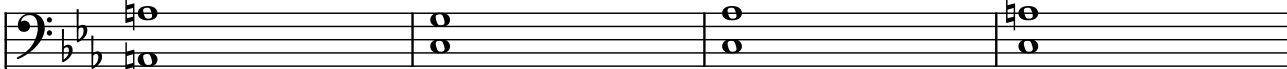
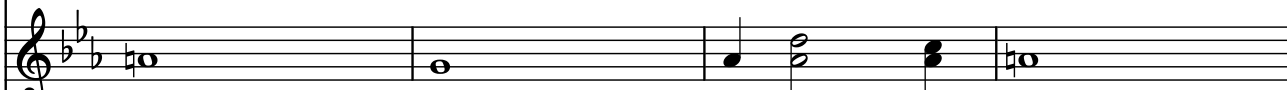

Measures 40-43: Cbs. plays a sustained chord of G2 and B1. S. plays a sustained note of G4. Crot. plays a continuous eighth-note pattern starting on C4.

44

Cbs.  S.  Crot. 

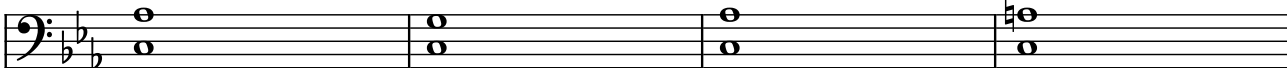
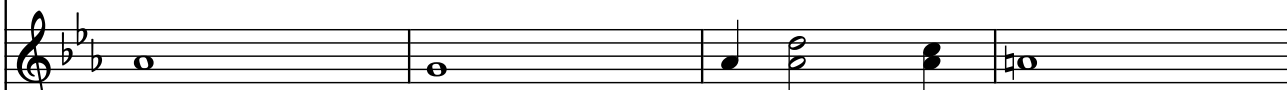

Measures 44-47: Cbs. plays a sustained chord of G2 and B1. S. plays a sustained note of G4. Crot. continues the eighth-note pattern.

48

Cbs.  S.  Crot. 

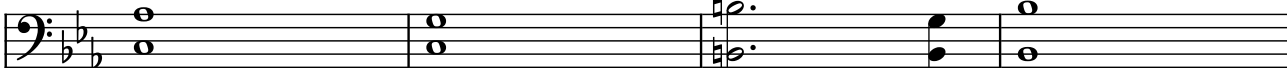
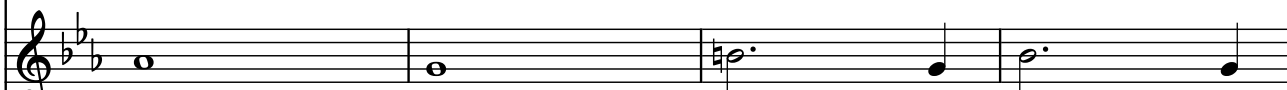

Measures 48-51: Cbs. plays a sustained chord of G2 and B1. S. plays a sustained note of G4. Crot. continues the eighth-note pattern.

52

Cbs.  S.  Crot. 

Measures 52-55: Cbs. plays a sustained chord of G2 and B1. S. plays a sustained note of G4. Crot. continues the eighth-note pattern.

56

Cbs.  S.  Crot. 

Measures 56-59: Cbs. plays a sustained chord of G2 and B1. S. plays a sustained note of G4. Crot. continues the eighth-note pattern.

64

Cbs.

S.

Crot.

[illegible]

72

Cbs.

S.

Crot.