

Exceptional Routine Work

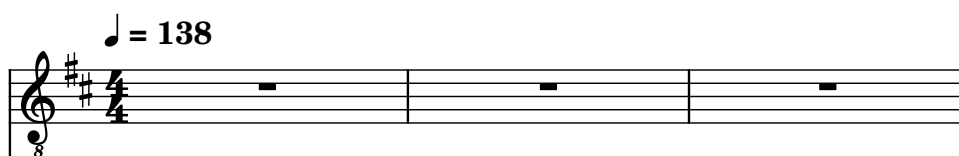
Composer: Koichi Seiyama

Game: Guilty Gear Isuka

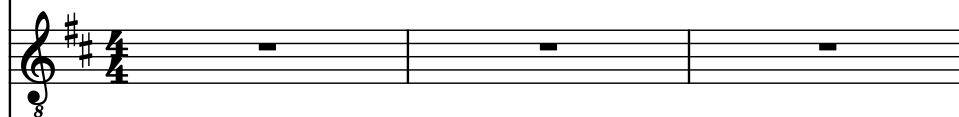
pianogame.org

$\text{♩} = 138$

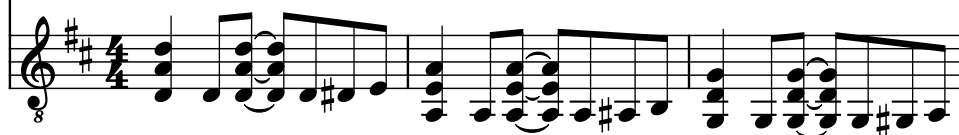
Electric Guitar, Lead Guitar 1



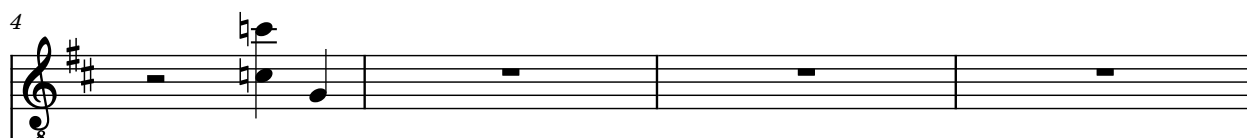
Electric Guitar, Lead Guitar 2



Electric Guitar, Rhythm Guitar



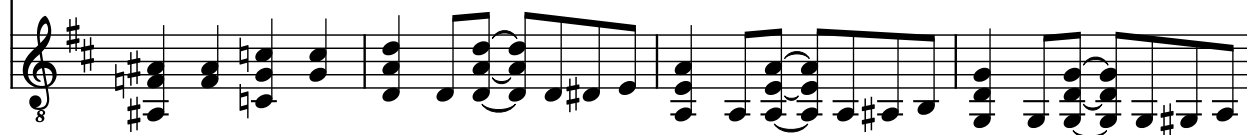
El. Guit.



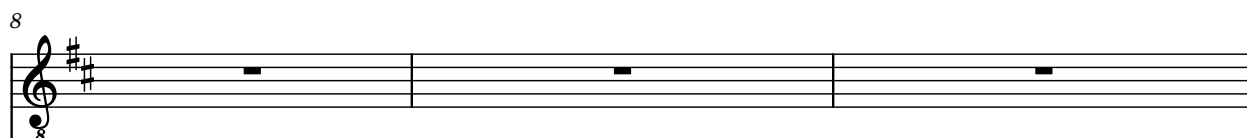
El. Guit.



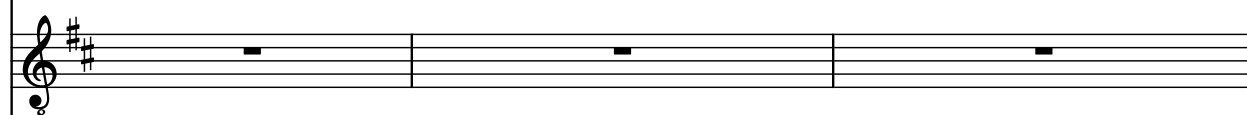
El. Guit.



El. Guit.



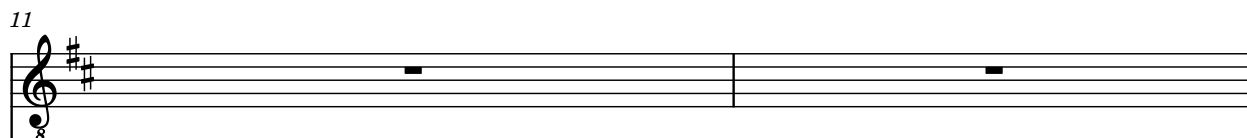
El. Guit.



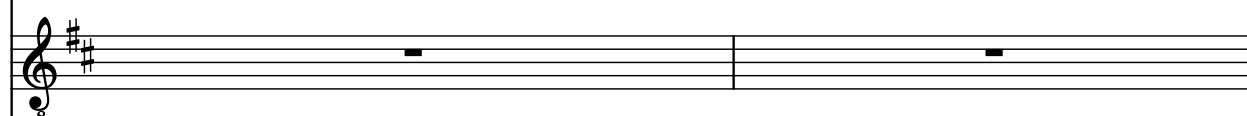
El. Guit.



El. Guit.



El. Guit.



El. Guit.



13

El. Guit.

El. Guit.

El. Guit.

15

El. Guit.

El. Guit.

El. Guit.

18

El. Guit.

El. Guit.

El. Guit.

21

El. Guit.

El. Guit.

El. Guit.

25

El. Guit.

Three staves of music. The top staff (labeled 'El. Guit.') has a treble clef, key signature of two sharps (F# and C#), and a common time signature. It contains a melodic line starting with an eighth note, followed by a quarter note, a half note, and a dotted half note. The middle staff is empty. The bottom staff (labeled 'El. Guit.') has a treble clef, key signature of two sharps, and a common time signature. It contains a bass line starting with a whole note chord, followed by a half note chord, and a dotted half note chord. The bottom staff also has a small '8' below the first measure.

28

El. Guit.

Three staves of music. The top staff (labeled 'El. Guit.') has a treble clef, key signature of two sharps, and a common time signature. It contains a melodic line starting with a whole note, followed by a half note, a quarter note, and a dotted half note. The middle staff is empty. The bottom staff (labeled 'El. Guit.') has a treble clef, key signature of two sharps, and a common time signature. It contains a bass line starting with a whole note chord, followed by a half note chord, and a dotted half note chord. The bottom staff also has a small '8' below the first measure.

32

El. Guit.

Three staves of music. The top staff (labeled 'El. Guit.') has a treble clef, key signature of two sharps, and a common time signature. It contains a melodic line starting with a whole note, followed by a half note, a quarter note, and a dotted half note. The middle staff is empty. The bottom staff (labeled 'El. Guit.') has a treble clef, key signature of two sharps, and a common time signature. It contains a bass line starting with a whole note chord, followed by a half note chord, and a dotted half note chord. The bottom staff also has a small '8' below the first measure.

35

El. Guit.

Three staves of music. The top staff (labeled 'El. Guit.') has a treble clef, key signature of two sharps, and a common time signature. It contains a melodic line starting with a whole note, followed by a half note, a quarter note, and a dotted half note. The middle staff is empty. The bottom staff (labeled 'El. Guit.') has a treble clef, key signature of two sharps, and a common time signature. It contains a bass line starting with a whole note chord, followed by a half note chord, and a dotted half note chord. The bottom staff also has a small '8' below the first measure.

38

El. Guit.

El. Guit.

El. Guit.

41

El. Guit.

El. Guit.

El. Guit.

44

El. Guit.

El. Guit.

El. Guit.

47

El. Guit.

El. Guit.

El. Guit.

50

El. Guit.

El. Guit.

El. Guit.

54

El. Guit.

El. Guit.

El. Guit.

57

El. Guit.

El. Guit.

El. Guit.

61

El. Guit.

El. Guit.

El. Guit.

64

El. Guit.

El. Guit.

El. Guit.

66

El. Guit.

El. Guit.

El. Guit.

68

El. Guit.

El. Guit.

El. Guit.

70

El. Guit.

El. Guit.

El. Guit.

73

El. Guit.

Three staves of electric guitar music. The top staff has whole rests. The middle staff has a melodic line with a repeat sign and a slur. The bottom staff has a bass line with chords and eighth notes.

76

El. Guit.

Three staves of electric guitar music. The top staff has whole rests. The middle staff has a melodic line with eighth notes and a slur. The bottom staff has a bass line with chords and eighth notes.

78

El. Guit.

Three staves of electric guitar music. The top staff has whole rests. The middle staff has a melodic line with eighth notes and a slur. The bottom staff has a bass line with chords and eighth notes.

80

El. Guit.

Three staves of electric guitar music. The top staff has whole rests. The middle staff has a melodic line with eighth notes and a slur. The bottom staff has a bass line with chords and eighth notes.

83

El. Guit.

Three staves of music for electric guitar. The key signature has two sharps (F# and C#). The time signature changes from 8/8 to 7/8 to 4/4. The first staff has a melodic line with eighth and quarter notes. The second staff is mostly rests. The third staff has a complex bass line with many beamed eighth notes and some chords.

87

El. Guit.

Three staves of music for electric guitar. The key signature has two sharps. The time signature changes from 8/8 to 7/8 to 4/4. The first staff has a melodic line with eighth and quarter notes. The second staff is mostly rests. The third staff has a complex bass line with many beamed eighth notes and some chords.

90

El. Guit.

Three staves of music for electric guitar. The key signature has two sharps. The time signature changes from 8/8 to 9/8 to 7/8 to 4/4. The first staff has a melodic line with eighth and quarter notes. The second staff is mostly rests. The third staff has a complex bass line with many beamed eighth notes and some chords.

93

El. Guit.

Three staves of music for electric guitar. The key signature has two sharps. The time signature changes from 4/4 to 8/8 to 7/8. The first staff has a melodic line with eighth and quarter notes. The second staff is mostly rests. The third staff has a complex bass line with many beamed eighth notes and some chords.

96

El. Guit.

El. Guit.

El. Guit.

98

El. Guit.

El. Guit.

El. Guit.

101

El. Guit.

El. Guit.

El. Guit.

105

El. Guit.

El. Guit.

El. Guit.

108

El. Guit.

El. Guit.

El. Guit.

The image shows three staves of musical notation for electric guitar. The first two staves are mostly empty, with a few notes in the first measure. The third staff contains a complex, fast-paced melodic line with many notes and accidentals. The notation is in treble clef with a key signature of two sharps (F# and C#). The first two staves have a 'g' symbol below the first measure, indicating a specific fretting or technique. The third staff also has a 'g' symbol below the first measure. The notation is dense and complex, suggesting a high level of technical skill is required to play this piece.