

# Boss Battle

Composer: Hirokazu Ando

Game: Kirby Triple Deluxe

[pianogame.org](http://pianogame.org)

♩ = 120

Measures 1-2 of a piano piece in B-flat major, 4/4 time. The tempo is marked as quarter note = 120. The right hand features a melody with eighth and sixteenth notes, while the left hand provides a steady eighth-note accompaniment.

3

Measures 3-4. Measure 3 begins with a treble clef change and a key signature change to E-flat major. The right hand has a whole rest, and the left hand continues with eighth-note accompaniment.

5

Measures 5-6. The right hand continues the melodic line with eighth and sixteenth notes. The left hand maintains the eighth-note accompaniment.

7

Measures 7-8. The right hand melody includes a sharp sign (F#) in measure 8. The left hand accompaniment continues with eighth notes.

9

Measures 9-10. The right hand features a melodic phrase with a half note and a quarter note. The left hand continues with eighth-note accompaniment.

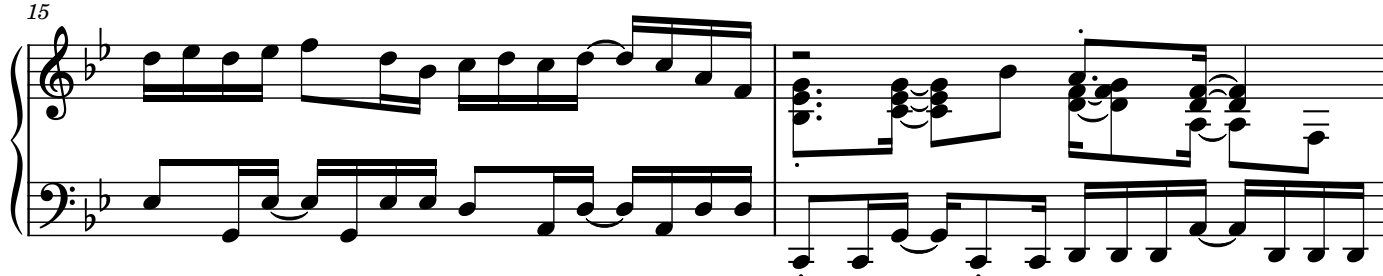
11

Measures 11-12. The right hand has a melodic line with eighth notes. The left hand continues with eighth-note accompaniment.

13



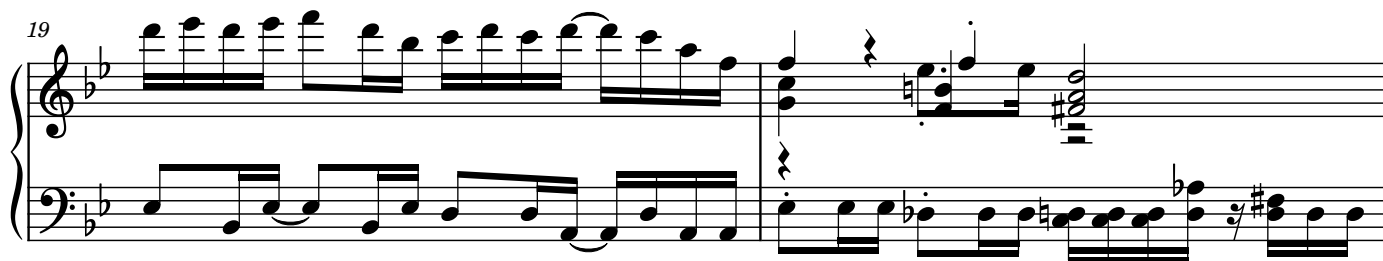
15



17



19



21



23



25

Measures 25 and 26 of a musical score. Measure 25 features a treble clef with a whole rest and a bass clef with a continuous eighth-note accompaniment. Measure 26 continues the eighth-note accompaniment in the bass clef, while the treble clef remains empty.

27

Measures 27 and 28. Measure 27 has a treble clef with a melodic line of eighth and sixteenth notes and a bass clef with eighth-note accompaniment. Measure 28 continues the melodic line in the treble and the accompaniment in the bass.

29

Measures 29 and 30. Measure 29 shows a treble clef with a melodic line and a bass clef with eighth-note accompaniment. Measure 30 features a treble clef with a melodic line including a sharp sign and a bass clef with eighth-note accompaniment.

31

Measures 31 and 32. Measure 31 has a treble clef with a melodic line and a bass clef with eighth-note accompaniment. Measure 32 continues the melodic line in the treble and the accompaniment in the bass.

33

Measures 33 and 34. Measure 33 has a treble clef with a melodic line and a bass clef with eighth-note accompaniment. Measure 34 features a treble clef with a melodic line and a bass clef with eighth-note accompaniment.

35

Measures 35 and 36. Measure 35 has a treble clef with a melodic line and a bass clef with eighth-note accompaniment. Measure 36 continues the melodic line in the treble and the accompaniment in the bass.

37

Measures 37-38 of a musical score in B-flat major. Measure 37 features a continuous eighth-note pattern in the right hand and a steady eighth-note accompaniment in the left hand. Measure 38 shows a change in the right hand with chords and moving lines, while the left hand continues its accompaniment.

39

Measures 39-40. Measure 39 has a more complex right-hand melody with some accidentals and rests, accompanied by the left hand. Measure 40 continues this pattern with similar melodic and accompanimental lines.

41

Measures 41-42. Measure 41 features a rapid eighth-note run in the right hand. Measure 42 shows a shift in the right hand to a more chordal texture, with the left hand providing a consistent accompaniment.

43

Measures 43-44. Measure 43 has a right-hand melody with eighth notes and rests. Measure 44 introduces a new melodic line in the right hand, while the left hand maintains its accompaniment.

45

Measures 45-46. Measure 45 continues the right-hand melody with eighth notes. Measure 46 features a more active right-hand part with chords and moving lines, accompanied by the left hand.

47

Measures 47-49. Measure 47 has a right-hand melody with eighth notes. Measure 48 features a more complex right-hand part with chords and moving lines. Measure 49 concludes the section with a sustained chord in the right hand and a final accompaniment line in the left hand.

