

Halo Concert Band Medley

Composer: Martin O'Donnell

Game: Halo Series

pianogame.org

♩ = 120

Alto Flute, Flute



Oboe d'amore, Oboe



Bassoon, Bassoon

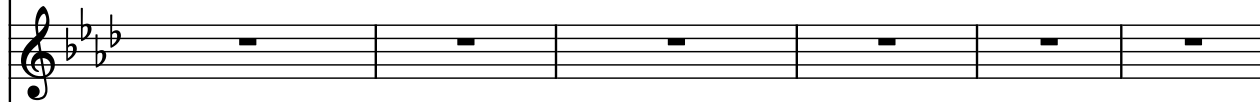


9

A. Fl.



Ob. d'a.



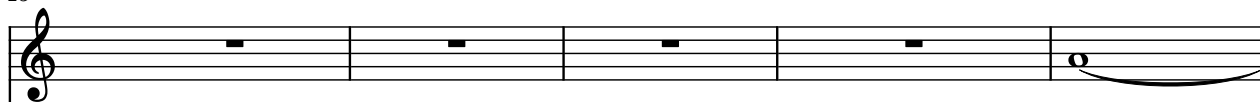
Bsn.



♩ = 140

15

A. Fl.



Ob. d'a.



Bsn.



20

A. Fl.



Ob. d'a.



Bsn.



24

A. Fl.

Ob. d'a.

Bsn.

3 3 3 3 3 3

27

A. Fl.

Ob. d'a.

Bsn.

3 3 3 3 3 3

31

A. Fl.

Ob. d'a.

Bsn.

3 3 3

34

A. Fl.

Ob. d'a.

Bsn.

3 3 3 3

36

A. Fl.

Ob. d'a.

Bsn.

3

3

3

38

A. Fl.

Ob. d'a.

Bsn.

3

3

3

3

40

A. Fl.

Ob. d'a.

Bsn.

3

$\text{♩} = 120$

12/8

3

3

3

3

3

3

45

A. Fl.

Ob. d'a.

Bsn.

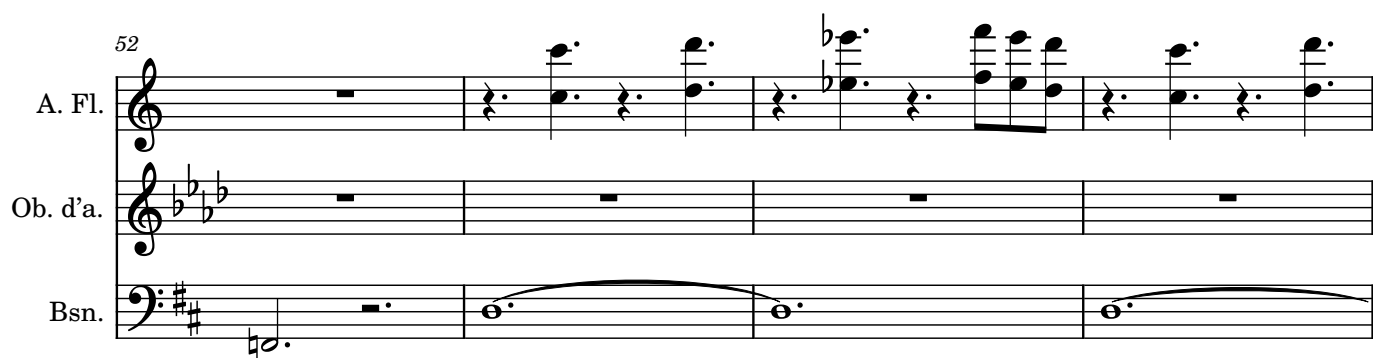
3

52

A. Fl.

Ob. d'a.

Bsn.




56

A. Fl.

Ob. d'a.

Bsn.

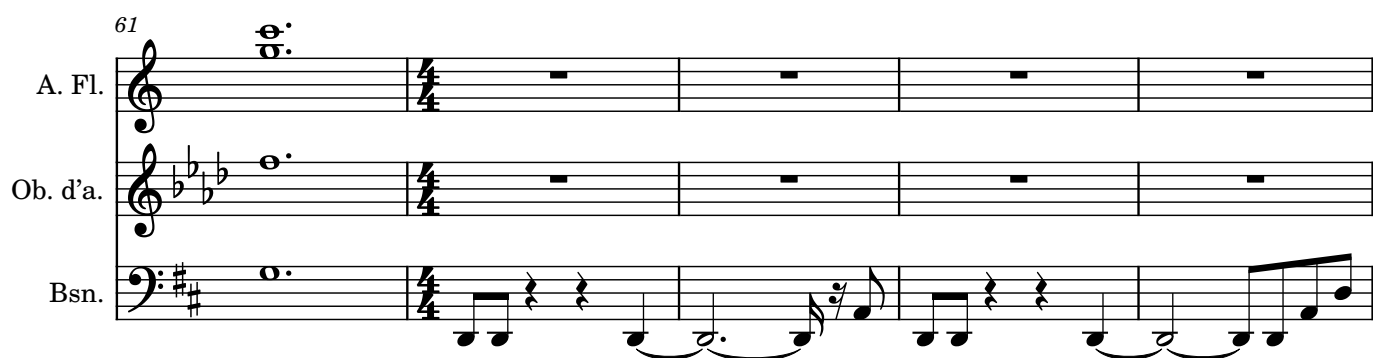


61

A. Fl.

Ob. d'a.

Bsn.



66

A. Fl.

Ob. d'a.

Bsn.

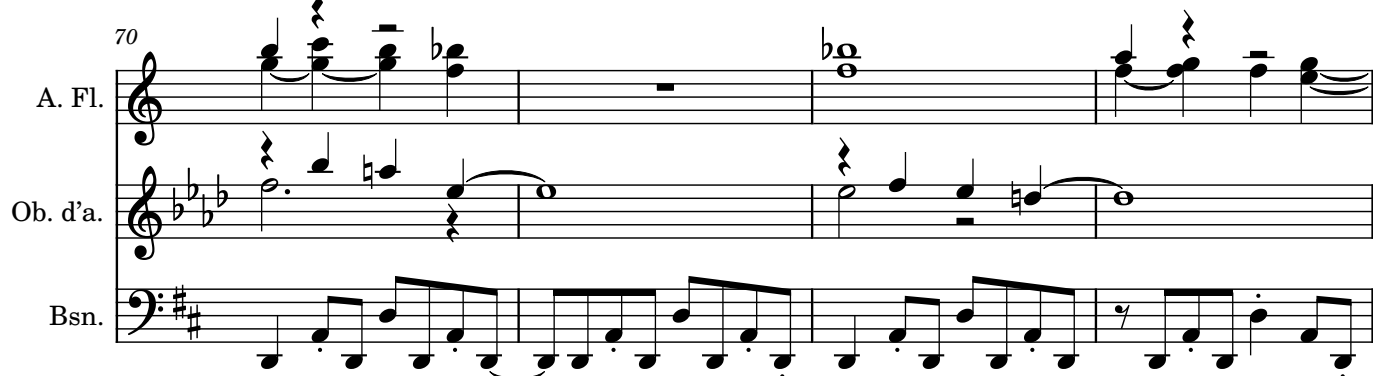


70

A. Fl.

Ob. d'a.

Bsn.



74

A. Fl.

Ob. d'a.

Bsn.

79

A. Fl.

Ob. d'a.

Bsn.

85

A. Fl.

Ob. d'a.

Bsn.

89

A. Fl.

Ob. d'a.

Bsn.

93

A. Fl.

Ob. d'a.

Bsn.

This musical score page contains five systems of music for three instruments: A. Fl. (Alto Flute), Ob. d'a. (Oboe da caccia), and Bsn. (Bassoon). The key signature is B-flat major (two flats). The time signature is not explicitly shown but appears to be 4/4 based on the note values. Measure numbers 74, 79, 85, 89, and 93 are indicated at the start of their respective systems. The A. Fl. part features sustained notes with breath marks (8) and some melodic movement. The Ob. d'a. part has a more active role with eighth and sixteenth notes, often playing in unison or harmony with the Bsn. The Bsn. part provides a rhythmic foundation with continuous eighth-note patterns and some melodic lines. The notation includes various musical symbols such as notes, rests, slurs, and breath marks.

97

A. Fl.

Ob. d'a.

Bsn.

Measures 97-100. A. Fl. plays a melodic line with a triplet of eighth notes and a half note. Ob. d'a. plays a melodic line with a half note and a quarter note. Bsn. plays a rhythmic pattern of eighth notes.

101

A. Fl.

Ob. d'a.

Bsn.

Measures 101-104. A. Fl. plays a melodic line with a triplet of eighth notes and a half note. Ob. d'a. plays a melodic line with a half note and a quarter note. Bsn. plays a rhythmic pattern of eighth notes.

105

A. Fl.

Ob. d'a.

Bsn.

$\text{♩} = 70$

Measures 105-108. A. Fl. plays a melodic line with a triplet of eighth notes and a half note. Ob. d'a. plays a melodic line with a half note and a quarter note. Bsn. plays a rhythmic pattern of eighth notes.

111

A. Fl.

Ob. d'a.

Bsn.

Measures 111-114. A. Fl. plays a melodic line with a triplet of eighth notes and a half note. Ob. d'a. plays a melodic line with a half note and a quarter note. Bsn. plays a rhythmic pattern of eighth notes.

117

A. Fl.

Ob. d'a.

Bsn.

Measures 117-120. A. Fl. plays a melodic line with a half note and a quarter note. Ob. d'a. plays a melodic line with a half note and a quarter note. Bsn. plays a rhythmic pattern of eighth notes.

122

A. Fl.

Ob. d'a.

Bsn.

Measures 122-125. A. Fl. has a melodic line starting with a half note, followed by quarter notes and eighth notes. Ob. d'a. has a half note, then rests. Bsn. has whole rests.

126

A. Fl.

Ob. d'a.

Bsn.

Measures 126-128. A. Fl. has a melodic line with eighth notes and quarter notes. Ob. d'a. has a half note, then quarter notes. Bsn. has whole rests.

129

A. Fl.

Ob. d'a.

Bsn.

Measures 129-135. A. Fl. has a melodic line with eighth notes and quarter notes. Ob. d'a. has a half note, then quarter notes. Bsn. has whole rests.

136

A. Fl.

Ob. d'a.

Bsn.

Measures 136-141. A. Fl. has a melodic line with eighth notes and quarter notes. Ob. d'a. has a half note, then quarter notes. Bsn. has whole rests.

142

A. Fl.

Ob. d'a.

Bsn.

Measures 142-147. A. Fl. has a melodic line with eighth notes and quarter notes. Ob. d'a. has a half note, then quarter notes. Bsn. has whole rests.

148

A. Fl.

Ob. d'a.

Bsn.

Measure 148: A. Fl. (G4, A4, B4, C5), Ob. d'a. (B3), Bsn. (G2, F2).
Measure 149: A. Fl. (D5, E5, F5, G5), Ob. d'a. (B3), Bsn. (G2, F2).
Measure 150: A. Fl. (G5, F5, E5, D5), Ob. d'a. (B3), Bsn. (G2, F2).
Measure 151: A. Fl. (C5, B4, A4, G4), Ob. d'a. (B3), Bsn. (G2, F2).
Measure 152: A. Fl. (F4, E4, D4, C4), Ob. d'a. (B3), Bsn. (G2, F2).
Measure 153: A. Fl. (B3, A3, G3, F3), Ob. d'a. (B3), Bsn. (G2, F2).
Measure 154: A. Fl. (E3, D3, C3, B2), Ob. d'a. (B3), Bsn. (G2, F2).

155

A. Fl.

Ob. d'a.

Bsn.

Measure 155: A. Fl. (B2, A2, G2, F2), Ob. d'a. (B3), Bsn. (G2, F2).
Measure 156: A. Fl. (E3, D3, C3, B2), Ob. d'a. (B3), Bsn. (G2, F2).
Measure 157: A. Fl. (B2, A2, G2, F2), Ob. d'a. (B3), Bsn. (G2, F2).
Measure 158: A. Fl. (E3, D3, C3, B2), Ob. d'a. (B3), Bsn. (G2, F2).
Measure 159: A. Fl. (B2, A2, G2, F2), Ob. d'a. (B3), Bsn. (G2, F2).